

# MFGE8 Polyclonal Antibody

Catalog No: tcba2337



## Available Sizes

**Size:** 50ul

**Size:** 100ul

**Size:** 200ul



## Specifications

**Application:**

WB

**Research Area:**

Cardiovascular,

**Species Reactivity:**

Human, Mouse, Rat

**Host Species:**

Rabbit

**Isotype:**

IgG

**Form:**

Liquid

**Storage Buffer:**

Buffer: PBS with 0.02% sodium azide, 50% glycerol, pH7.3.

**Recommended Dilution:**

WB 1:500 - 1:2000

**Storage Instruction:**

Store at -20°C. Avoid freeze / thaw cycles.

#### Alternative Names:

BA46;EDIL1;HMFG;hP47;HsT19888;MFG-E8;MFGM;OAcGD3S;SED1;SPAG10

#### SwissProt:

Q08431

#### Gene ID:

4240 (human);

#### Calculated Molecular Weight:

35kDa/37kDa/43kDa

#### Purification:

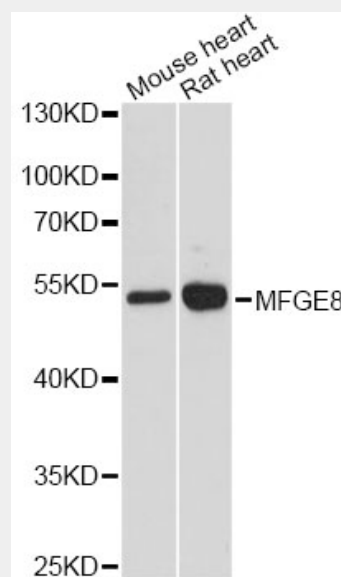
Affinity purification

#### Cellular Location:

Membrane,Peripheral membrane protein,Secreted,

### Product Description

This gene encodes a preproprotein that is proteolytically processed to form multiple protein products. The major encoded protein product, lactadherin, is a membrane glycoprotein that promotes phagocytosis of apoptotic cells. This protein has also been implicated in wound healing, autoimmune disease, and cancer. Lactadherin can be further processed to form a smaller cleavage product, medin, which comprises the major protein component of aortic medial amyloid (AMA). Alternative splicing results in multiple transcript variants.



Western blot analysis of extracts of various cell lines, using MFGE8 antibody at 1:3000 dilution.

Secondary antibody: HRP Goat Anti-Rabbit IgG (H+L) at 1:10000 dilution.

Lysates/proteins: 25ug per lane.

Blocking buffer: 3% nonfat dry milk in TBST.

Detection: ECL Enhanced Kit.

Exposure time: 90s.

All products are for RESEARCH USE ONLY. Not for diagnostic & therapeutic purposes!