

BAX Polyclonal Antibody [KO Validated]

Catalog No: tcba2077

KO VALIDATED



Available Sizes

Size: 50ul

Size: 100ul

Size: 200ul



Specifications

Application:

WB,IHC,IF,IP

Research Area:

Cancer,Apoptosis,AKT pathway,Neuroscience,Cell Biology,Metabolism,Neurodegeneration,PI3K-Akt pathway,

Species Reactivity:

Human,Mouse,Rat

Host Species:

Rabbit

Immunogen / Amino acids:

A synthetic peptide corresponding to a sequence within amino acids 1-100 of human Bax (NP_620116.1).

Isotype:

IgG

Form:

Liquid

Storage Buffer:

Buffer: PBS with 0.02% sodium azide, 50% glycerol, pH7.3.

Recommended Dilution:

WB 1:500 - 1:2000

IHC 1:100 - 1:200
IF 1:50 - 1:200
IP 1:50 - 1:100

Storage Instruction:

Store at -20°C. Avoid freeze / thaw cycles.

Alternative Names:

BCL2L4; BAX

SwissProt:

Q07812

Gene ID:

581 (human);

Calculated Molecular Weight:

4kDa/12kDa/15kDa/18kDa/19kDa/21kDa/24kDa

Observed Molecular Weight:

20kDa

Sequence:

MDGSGEQPRGGGPTSSEQIMKTGALLLQGFIQDRAGRMGGEAPELALDPVPQDASTKKLSECLKRIGDELDSNMELQRMIAAVDTS
P
REVFFRVAADMF

Purification:

Affinity purification

Positive Control:

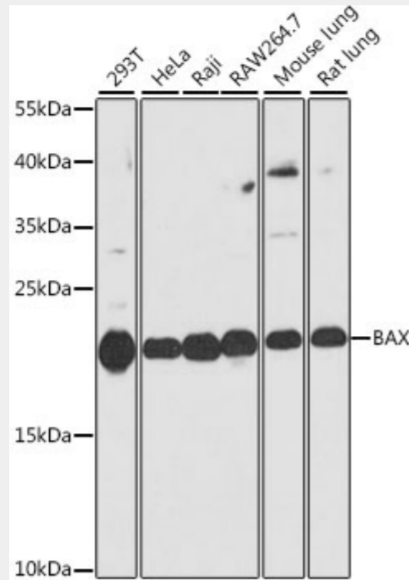
293T, HeLa, Raji, RAW264.7, Mouse lung, Rat lung

Cellular Location:

Cytoplasm, Cytoplasm, Mitochondrion membrane, Single-pass membrane protein,

Product Description

The protein encoded by this gene belongs to the BCL2 protein family. BCL2 family members form hetero- or homodimers and act as anti- or pro-apoptotic regulators that are involved in a wide variety of cellular activities. This protein forms a heterodimer with BCL2, and functions as an apoptotic activator. This protein is reported to interact with, and increase the opening of, the mitochondrial voltage-dependent anion channel (VDAC), which leads to the loss in membrane potential and the release of cytochrome c. The expression of this gene is regulated by the tumor suppressor P53 and has been shown to be involved in P53-mediated apoptosis. Multiple alternatively spliced transcript variants, which encode different isoforms, have been reported for this gene.



Western blot analysis of extracts of various cell lines, using BAX antibody at 1:1000 dilution.

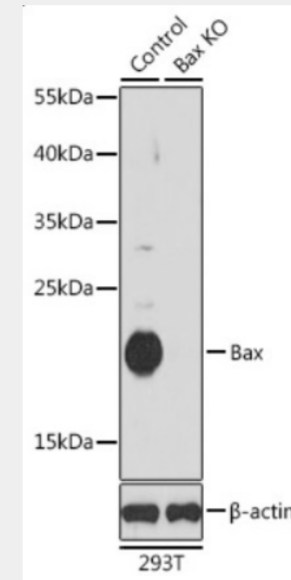
Secondary antibody: HRP Goat Anti-Rabbit IgG (H+L) at 1:10000 dilution.

Lysates/proteins: 25ug per lane.

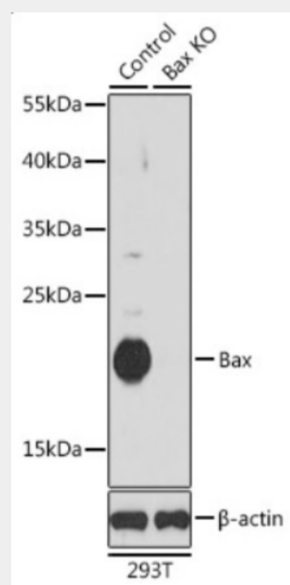
Blocking buffer: 3% nonfat dry milk in TBST.

Detection: ECL Basic Kit.

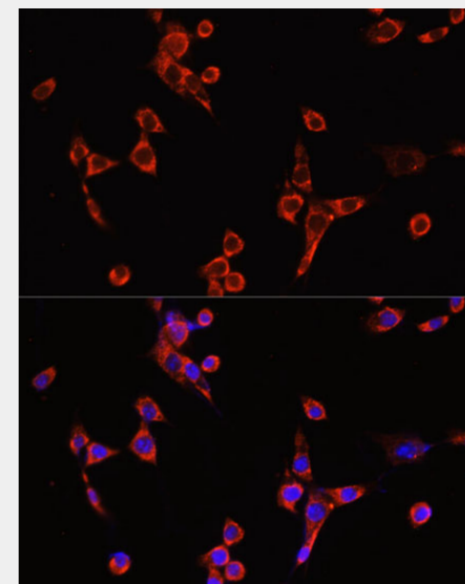
Exposure time: 90s.



Immunohistochemistry of paraffin-embedded mouse liver using BAX antibody at dilution of 1:100 (40x lens).

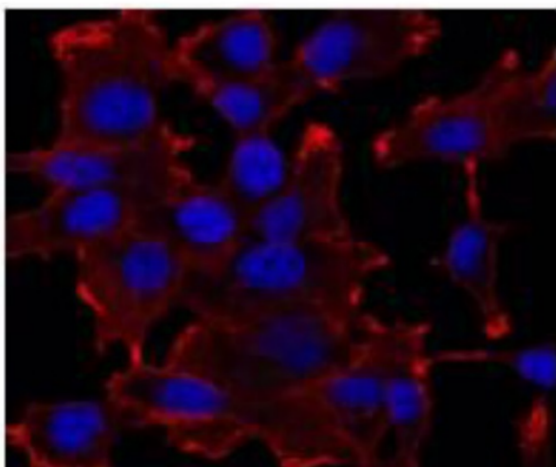


Western blot analysis of extracts from normal (control) and Bax knockout (KO) 293T cells, using Bax antibody (tcba2077) at 1:1000 dilution. Secondary antibody: HRP Goat Anti-Rabbit IgG (H+L) at 1:10000 dilution. Lysates/proteins: 25ug per lane. Blocking buffer: 3% nonfat dry milk in TBST. Detection: ECL Basic Kit. Exposure time: 90s.

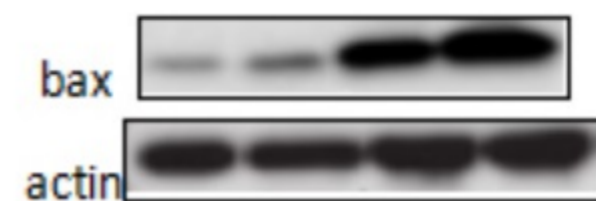


Immunofluorescence analysis of NIH/3T3 cells using BAX antibody at dilution of 1:100. Blue: DAPI for nuclear staining.

Customer Review



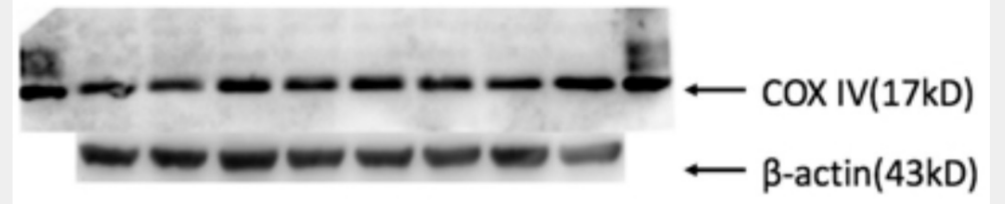
Customer Review



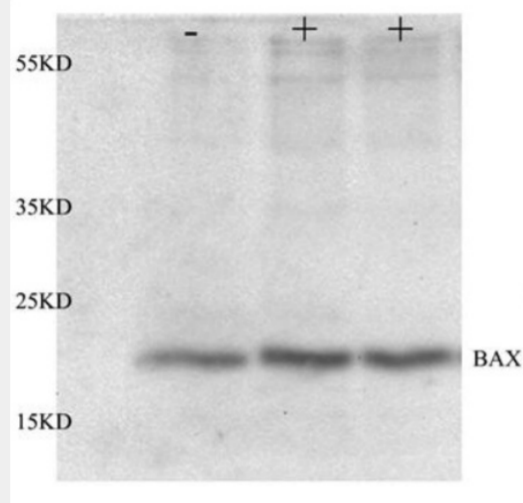
Customer Review



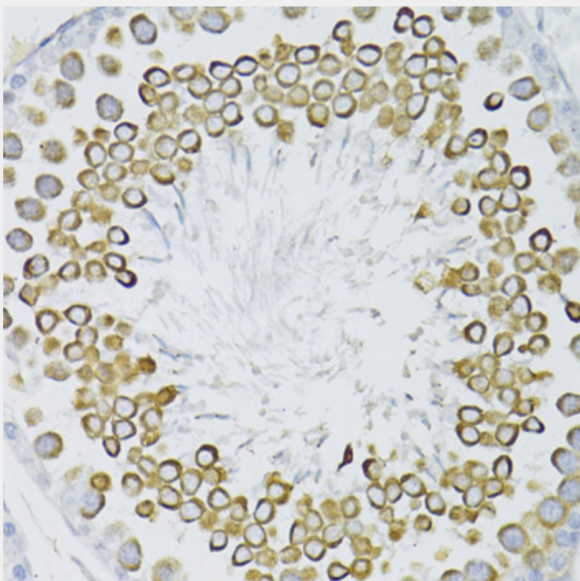
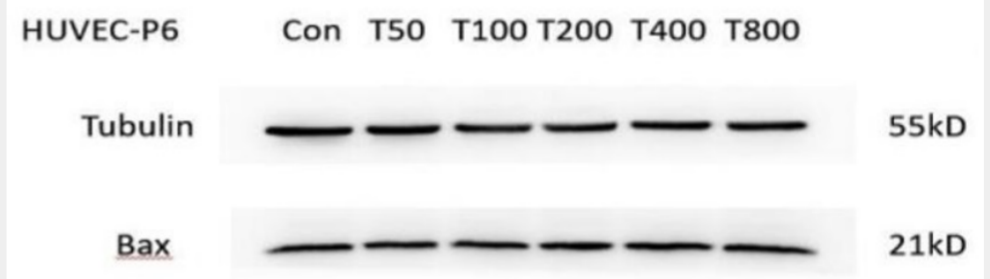
Customer Review



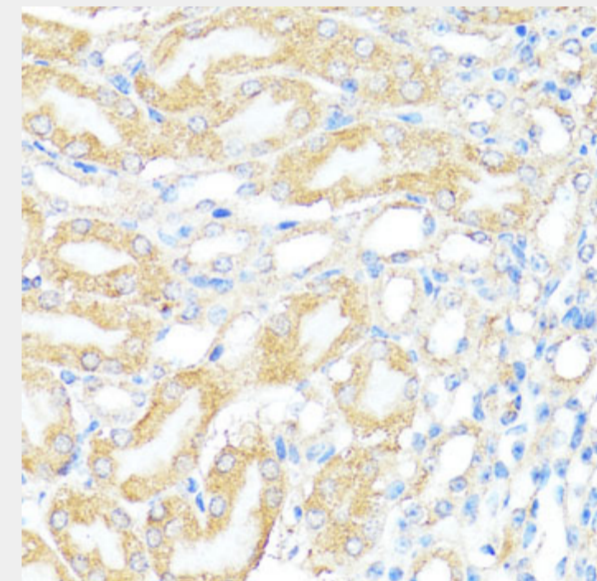
Customer Review



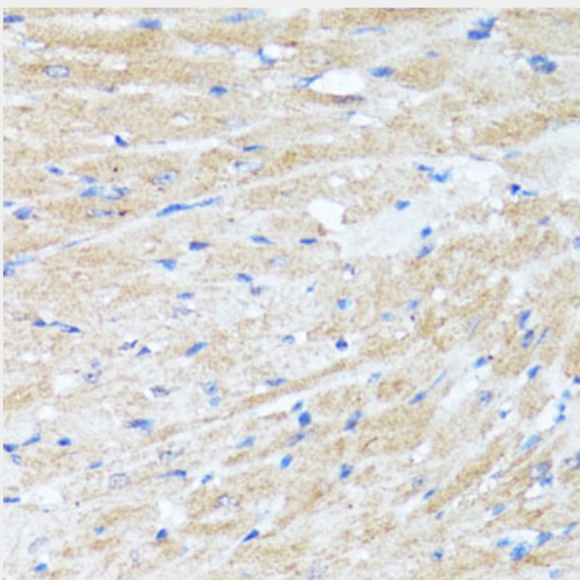
Customer Review



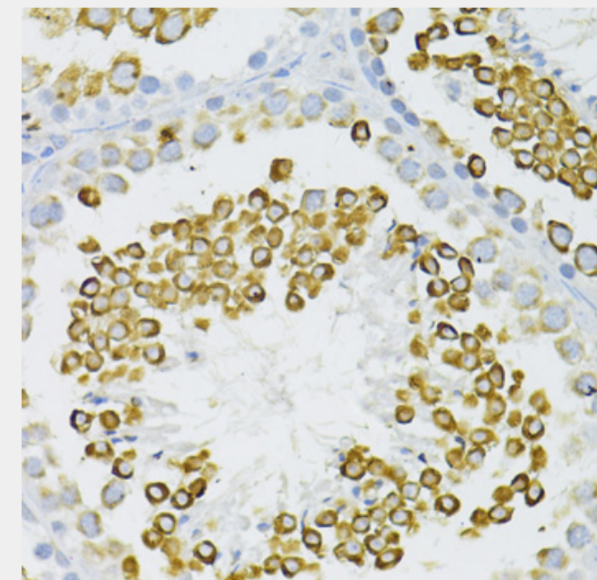
Immunohistochemistry of paraffin-embedded rat testis using BAX antibody at dilution of 1:100 (40x lens).



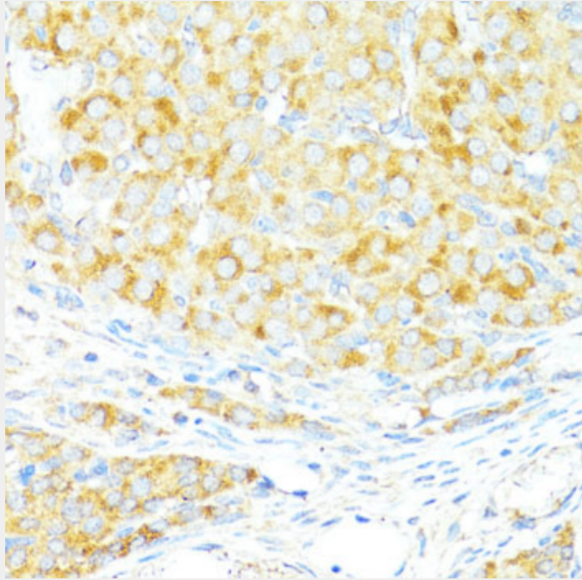
Immunohistochemistry of paraffin-embedded mouse kidney using BAX antibody at dilution of 1:100 (40x lens).



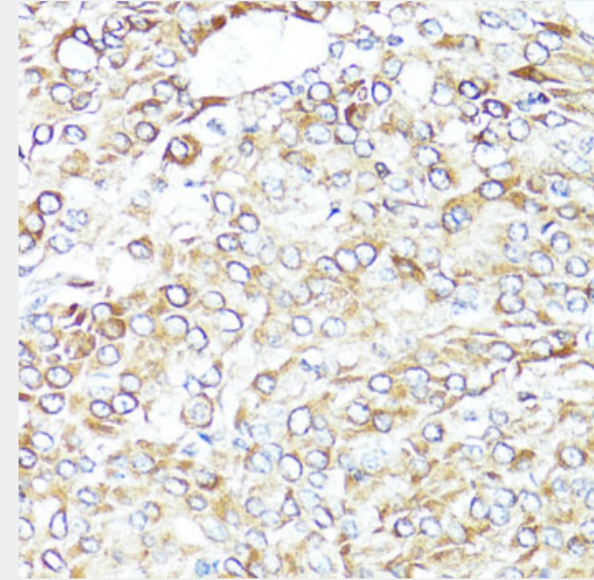
Immunohistochemistry of paraffin-embedded mouse heart using BAX antibody at dilution of 1:100 (40x lens).



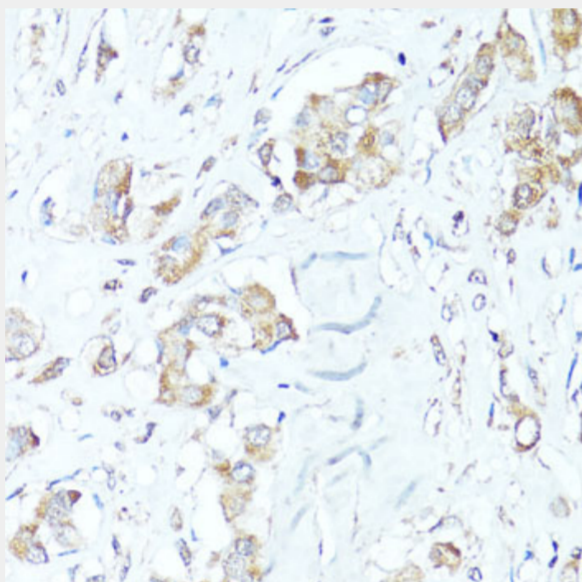
Immunohistochemistry of paraffin-embedded mouse testis using BAX antibody at dilution of 1:100 (40x lens).



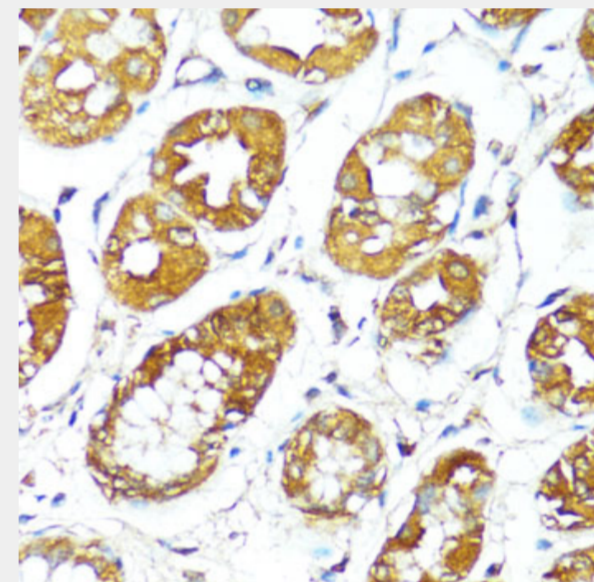
Immunohistochemistry of paraffin-embedded rat ovary using BAX antibody at dilution of 1:100 (40x lens).



Immunohistochemistry of paraffin-embedded human lung cancer using BAX antibody at dilution of 1:100 (40x lens).



Immunohistochemistry of paraffin-embedded human mammary cancer using BAX antibody at dilution of 1:100 (40x lens).



Immunohistochemistry of paraffin-embedded human stomach using BAX antibody at dilution of 1:100 (40x lens).

All products are for RESEARCH USE ONLY. Not for diagnostic & therapeutic purposes!