

HNRNPA2B1 Polyclonal Antibody

Catalog No: tcba1781

KO VALIDATED



Available Sizes

Size: 50ul

Size: 100ul

Size: 200ul



Specifications

Application:

WB,IHC,IF

Research Area:

RNA Binding Protein(RBP),

Species Reactivity:

Human,Mouse,Rat

Host Species:

Rabbit

Isotype:

IgG

Form:

Liquid

Storage Buffer:

Buffer: PBS with 0.02% sodium azide, 50% glycerol, pH7.3.

Recommended Dilution:

WB 1:500 - 1:2000

IHC 1:50 - 1:200

IF 1:50 - 1:200

Storage Instruction:

Store at -20°C. Avoid freeze / thaw cycles.

Alternative Names:

HNRNPA2;HNRNPB1;HNRPA2;HNRPA2B1;HNRPB1;IBMPFD2;RNPA2;SNRPB1

SwissProt:

P22626

Gene ID:

3181 (human);

Calculated Molecular Weight:

36kDa/37kDa

Purification:

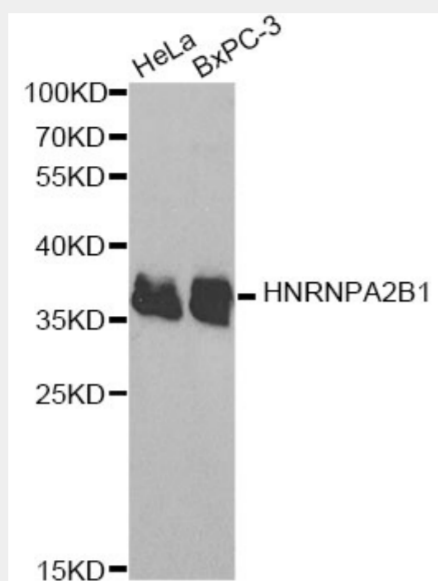
Affinity purification

Cellular Location:

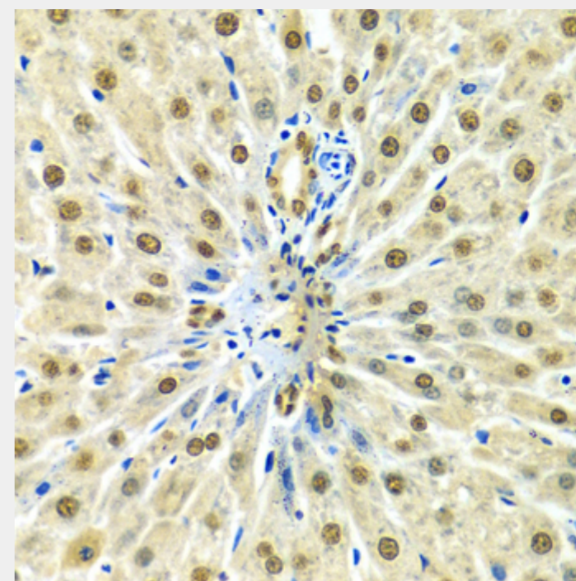
Cytoplasm,Nucleus,nucleoplasm,

Product Description

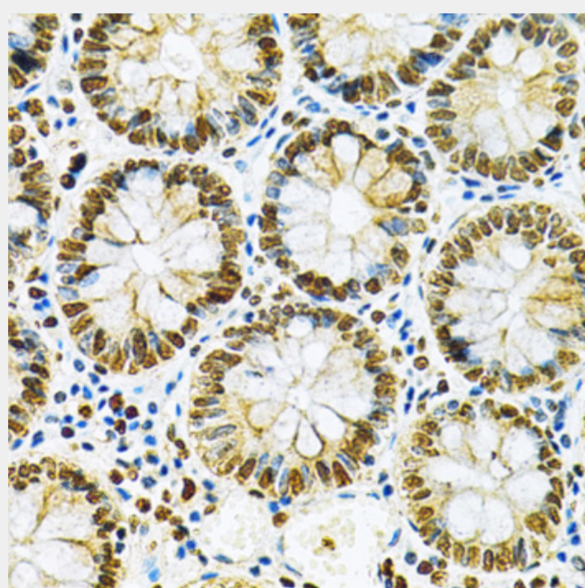
This gene belongs to the A/B subfamily of ubiquitously expressed heterogeneous nuclear ribonucleoproteins (hnRNPs). The hnRNPs are RNA binding proteins and they complex with heterogeneous nuclear RNA (hnRNA). These proteins are associated with pre-mRNAs in the nucleus and appear to influence pre-mRNA processing and other aspects of mRNA metabolism and transport. While all of the hnRNPs are present in the nucleus, some seem to shuttle between the nucleus and the cytoplasm. The hnRNP proteins have distinct nucleic acid binding properties. The protein encoded by this gene has two repeats of quasi-RRM domains that bind to RNAs. This gene has been described to generate two alternatively spliced transcript variants which encode different isoforms.



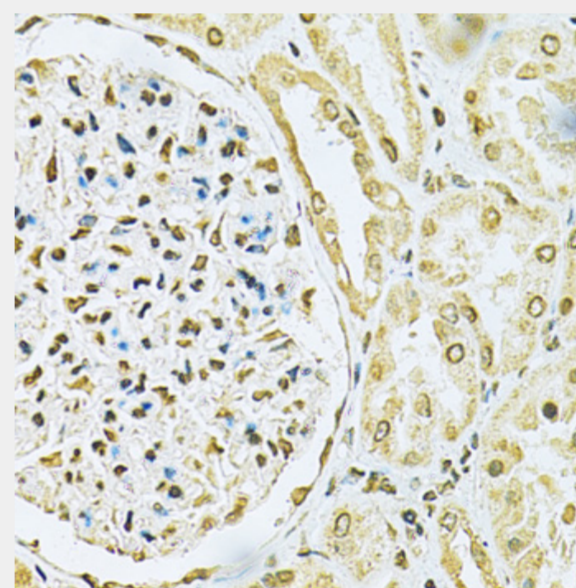
Western blot analysis of extracts of various cell lines, using HNRNPA2B1 antibody at 1:1000 dilution.
Secondary antibody: HRP Goat Anti-Rabbit IgG (H+L) at 1:10000 dilution.
Lysates/proteins: 25ug per lane.
Blocking buffer: 3% nonfat dry milk in TBST.



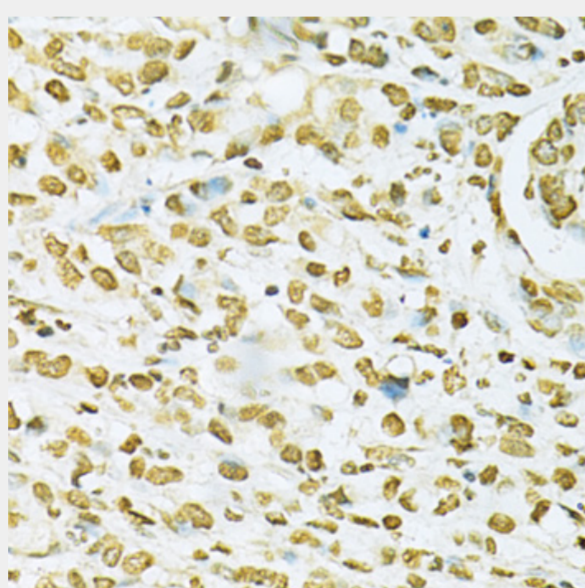
Immunohistochemistry of paraffin-embedded rat liver using HNRNPA2B1 Antibody at dilution of 1:100 (40x lens).



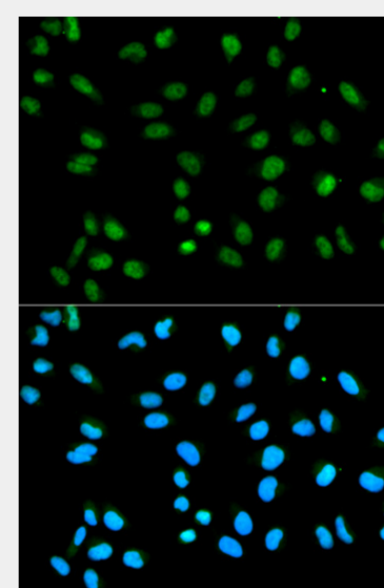
Immunohistochemistry of paraffin-embedded human colon using HNRNPA2B1 Antibody at dilution of 1:200 (40x lens).



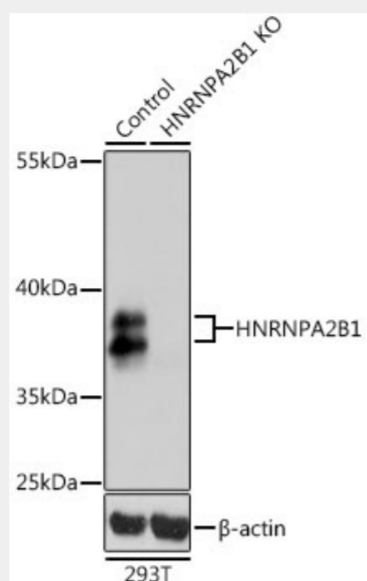
Immunohistochemistry of paraffin-embedded human kidney cancer using HNRNPA2B1 Antibody at dilution of 1:200 (40x lens).



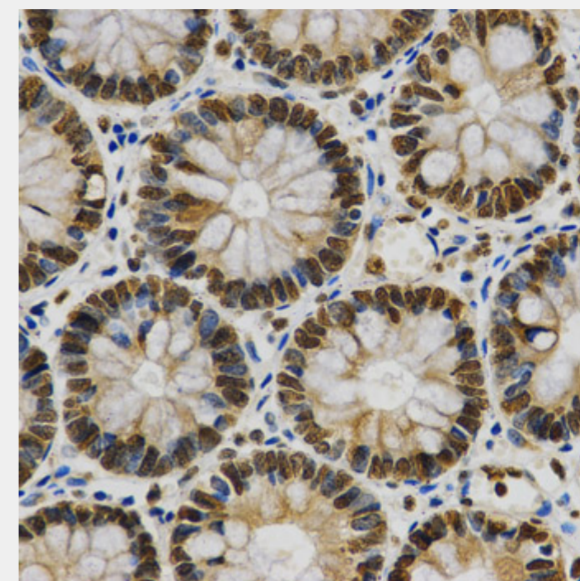
Immunohistochemistry of paraffin-embedded human gastric cancer using HNRNPA2B1 Antibody at dilution of 1:200 (40x lens).



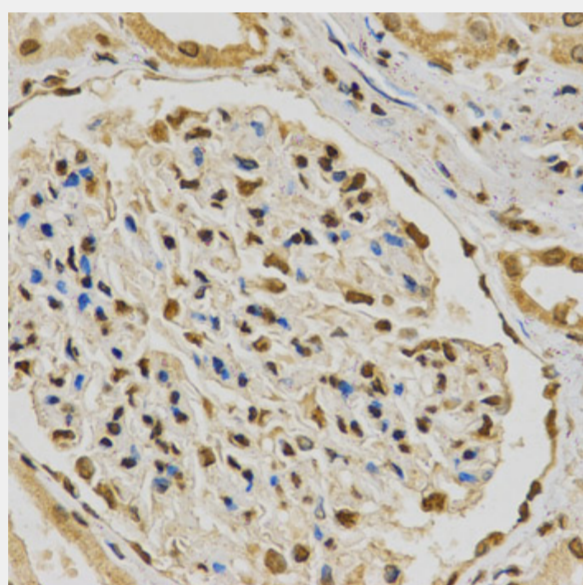
Immunofluorescence analysis of HeLa cells using HNRNPA2B1 antibody. Blue: DAPI for nuclear staining.



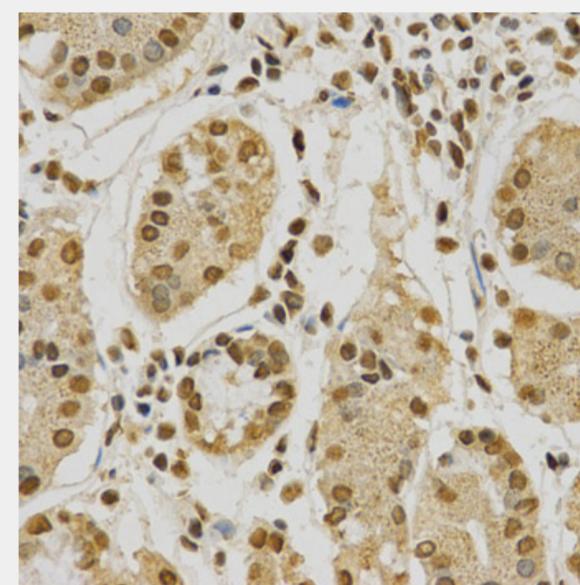
Western blot analysis of extracts from normal (control) and HNRNPA2B1 knockout (KO) 293T cells, using HNRNPA2B1 antibody at 1:1000 dilution.
Secondary antibody: HRP Goat Anti-Rabbit IgG (H+L) at 1:10000 dilution.
Lysates/proteins: 25ug per lane.
Blocking buffer: 3% nonfat dry milk in TBST.
Detection: ECL Basic Kit.
Exposure time: 1s.



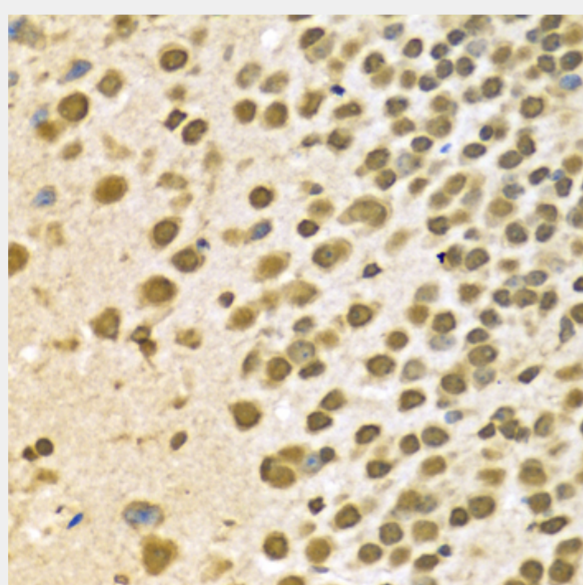
Immunohistochemistry of paraffin-embedded human colon using HNRNPA2B1 Antibody at dilution of 1:200 (40x lens).



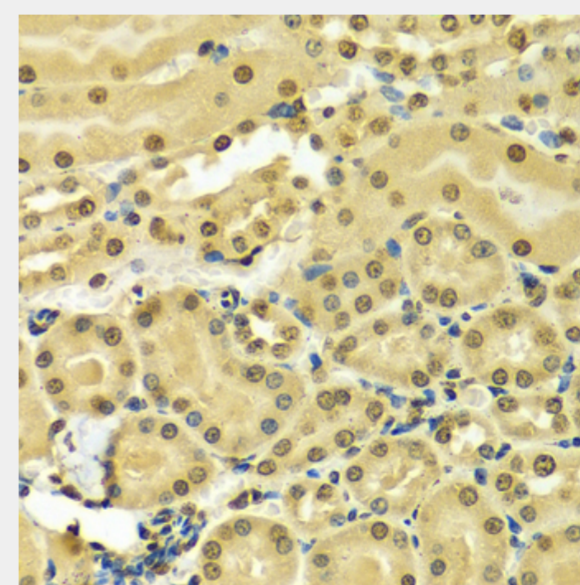
Immunohistochemistry of paraffin-embedded human kidney using HNRNPA2B1 Antibody at dilution of 1:200 (40x lens).



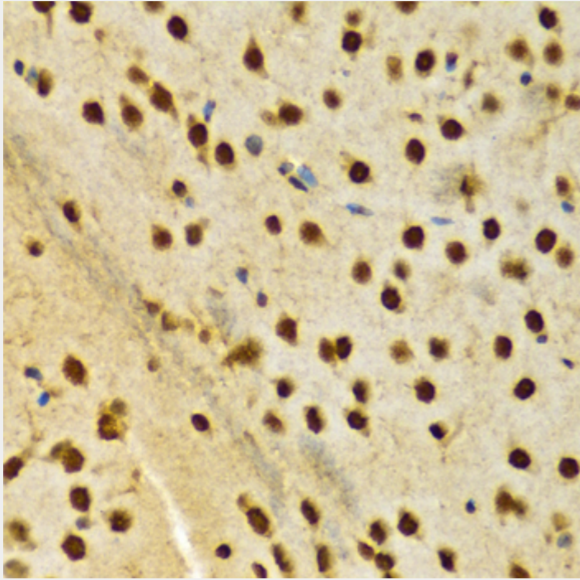
Immunohistochemistry of paraffin-embedded human stomach using HNRNPA2B1 Antibody at dilution of 1:200 (40x lens).



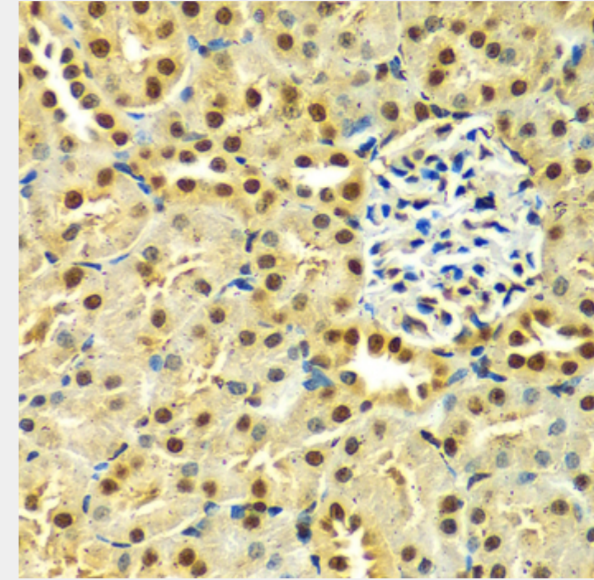
Immunohistochemistry of paraffin-embedded mouse brain using HNRNPA2B1 Antibody at dilution of 1:100 (40x lens).



Immunohistochemistry of paraffin-embedded mouse kidney using HNRNPA2B1 Antibody at dilution of 1:100 (40x lens).



Immunohistochemistry of paraffin-embedded rat brain using HNRNPA2B1 Antibody at dilution of 1:100 (40x lens).



Immunohistochemistry of paraffin-embedded rat kidney using HNRNPA2B1 Antibody at dilution of 1:100 (40x lens).

All products are for RESEARCH USE ONLY. Not for diagnostic & therapeutic purposes!