

# BRCA1 Polyclonal Antibody

Catalog No: tcba1736



## Available Sizes

**Size:** 50ul

**Size:** 100ul

**Size:** 200ul



## Specifications

**Application:**

WB,IHC,IF

**Research Area:**

Cancer,Cell cycle,Cell Biology,DNA Damage/Repair,Cell Cycle,

**Species Reactivity:**

Human,Mouse,Rat

**Host Species:**

Rabbit

**Isotype:**

IgG

**Form:**

Liquid

**Storage Buffer:**

Buffer: PBS with 0.02% sodium azide, 50% glycerol, pH7.3.

**Recommended Dilution:**

WB 1:500 - 1:2000

IHC 1:50 - 1:200

IF 1:50 - 1:200

**Storage Instruction:**

Store at -20°C. Avoid freeze / thaw cycles.

**Alternative Names:**

BRCA1;BRCC1;BROVCA1;FANCS;IRIS;PNCA4;PPP1R53;PSCP;RNF53

**SwissProt:**

P38398

**Gene ID:**

672 (human);

**Calculated Molecular Weight:**

7kDa/78-85kDa/202-210kDa

**Purification:**

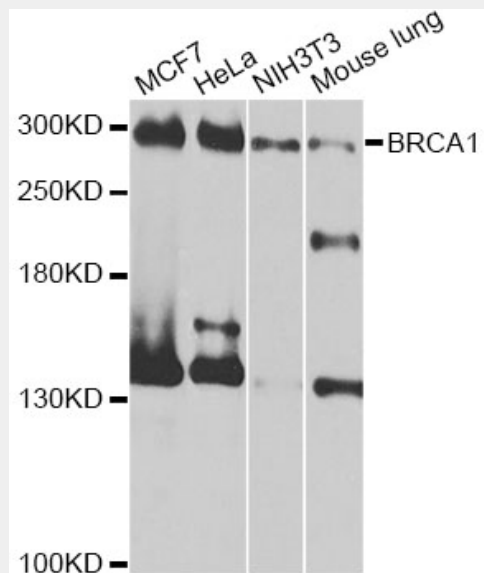
Affinity purification

**Cellular Location:**

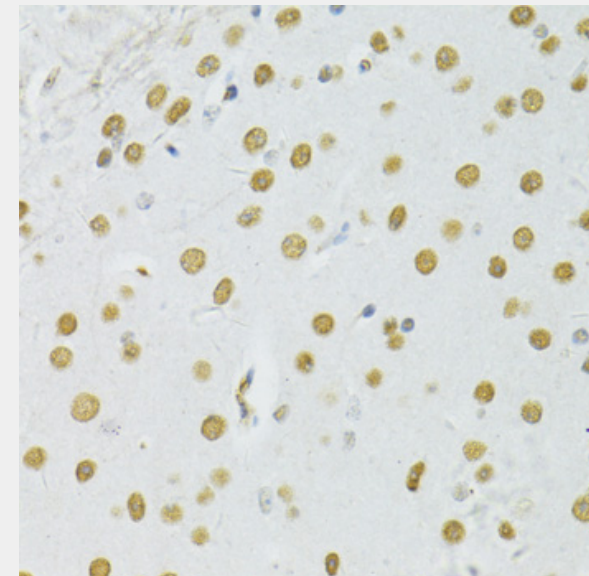
Chromosome,Cytoplasm,Cytoplasm,Nucleus,

**Product Description**

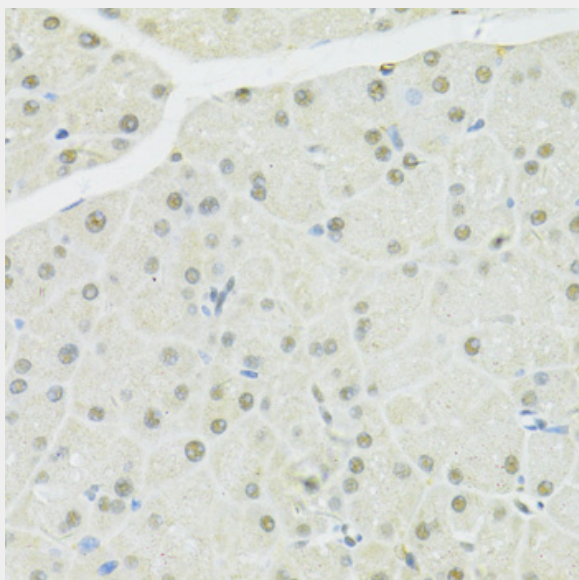
This gene encodes a nuclear phosphoprotein that plays a role in maintaining genomic stability, and it also acts as a tumor suppressor. The encoded protein combines with other tumor suppressors, DNA damage sensors, and signal transducers to form a large multi-subunit protein complex known as the BRCA1-associated genome surveillance complex (BASC). This gene product associates with RNA polymerase II, and through the C-terminal domain, also interacts with histone deacetylase complexes. This protein thus plays a role in transcription, DNA repair of double-stranded breaks, and recombination. Mutations in this gene are responsible for approximately 40% of inherited breast cancers and more than 80% of inherited breast and ovarian cancers. Alternative splicing plays a role in modulating the subcellular localization and physiological function of this gene. Many alternatively spliced transcript variants, some of which are disease-associated mutations, have been described for this gene, but the full-length natures of only some of these variants has been described. A related pseudogene, which is also located on chromosome 17, has been identified.



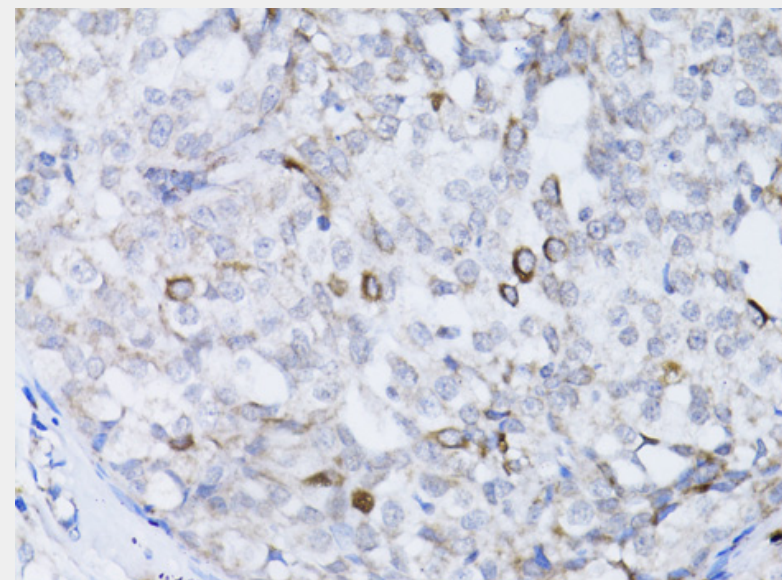
Western blot analysis of extracts of various cell lines, using BRCA1 antibody at 1:1000 dilution.  
Secondary antibody: HRP Goat Anti-Rabbit IgG (H+L) at 1:10000 dilution.  
Lysates/proteins: 25ug per lane.  
Blocking buffer: 3% nonfat dry milk in TBST.  
Detection: ECL Basic Kit.  
Exposure time: 1s.



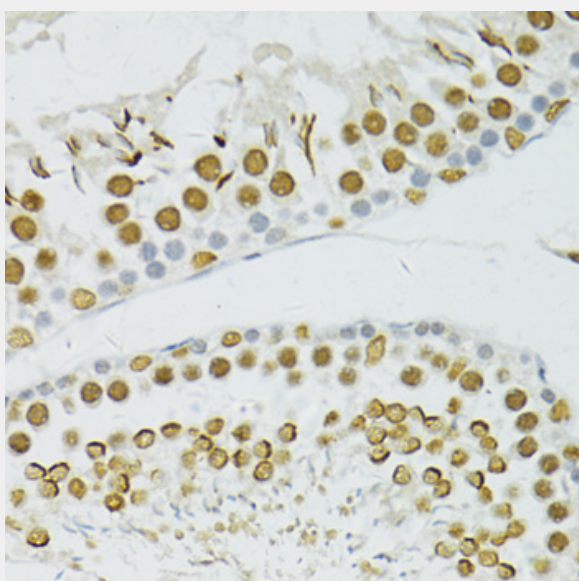
Immunohistochemistry of paraffin-embedded mouse brain using BRCA1 antibody at dilution of 1:100 (40x lens).



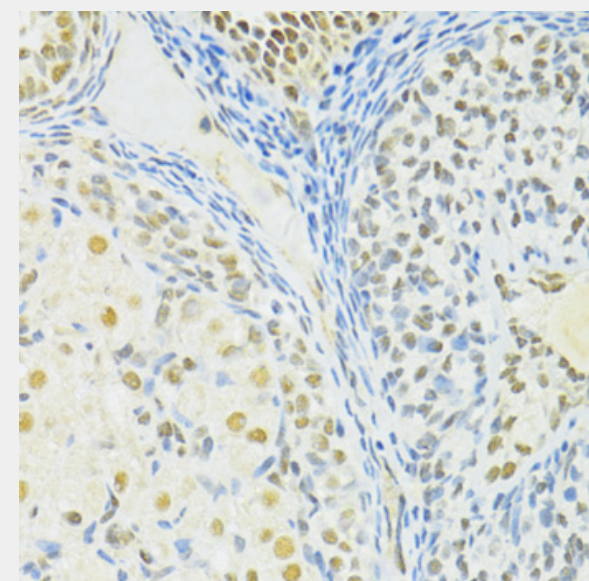
Immunohistochemistry of paraffin-embedded mouse pancreas using BRCA1 antibody at dilution of 1:100 (40x lens).



Immunohistochemistry of paraffin-embedded human breast cancer using BRCA1 antibody at dilution of 1:100 (40x lens).

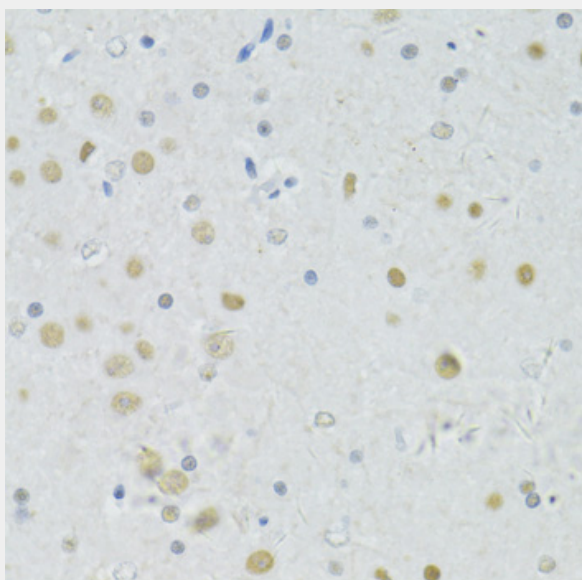


Immunohistochemistry of paraffin-embedded rat testis using BRCA1 antibody at dilution of 1:100 (40x lens).

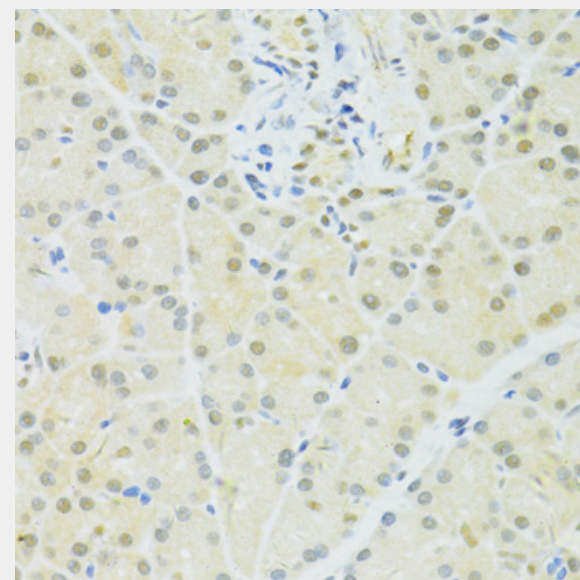


Immunohistochemistry of paraffin-embedded rat ovary using BRCA1 antibody at dilution of 1:100 (40x lens).

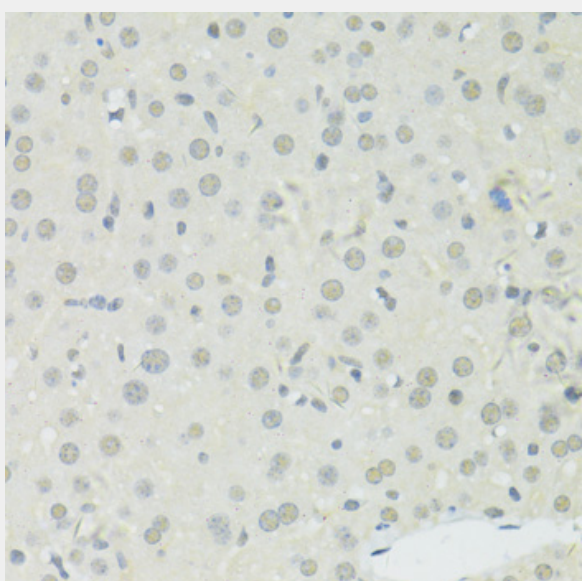




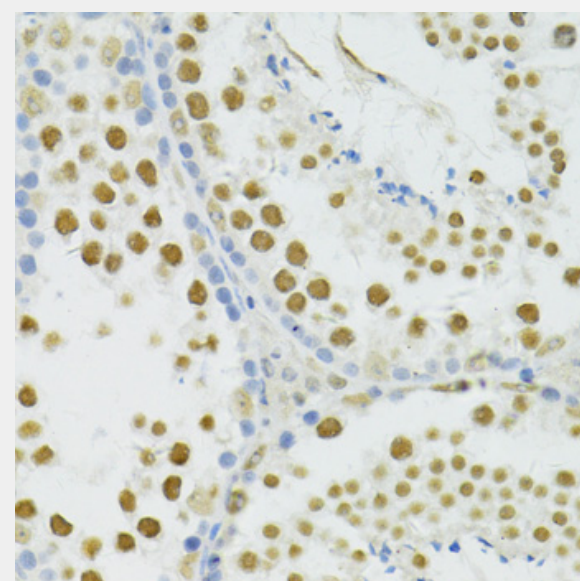
Immunohistochemistry of paraffin-embedded rat brain using BRCA1 antibody at dilution of 1:100 (40x lens).



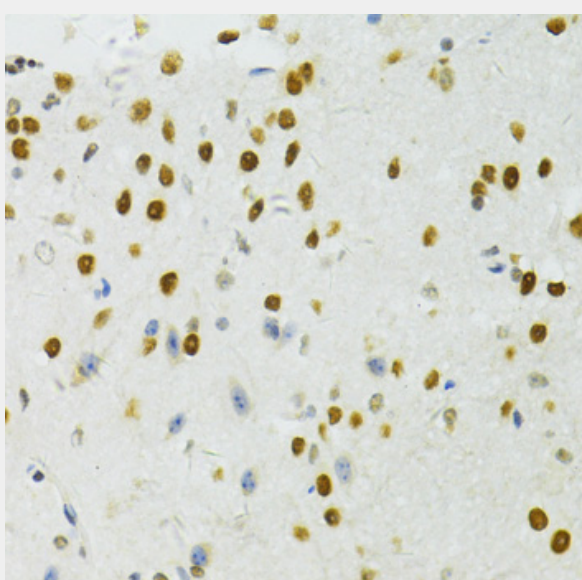
Immunohistochemistry of paraffin-embedded rat pancreas using BRCA1 antibody at dilution of 1:100 (40x lens).



Immunohistochemistry of paraffin-embedded mouse liver using BRCA1 antibody at dilution of 1:100 (40x lens).



Immunohistochemistry of paraffin-embedded mouse testis using BRCA1 antibody at dilution of 1:100 (40x lens).



Immunohistochemistry of paraffin-embedded mouse spinal cord using BRCA1 antibody at dilution of 1:100 (40x lens).

All products are for RESEARCH USE ONLY. Not for diagnostic & therapeutic purposes!