

CD31 /PECAM1 Rabbit Polyclonal Antibody

Catalog No: tcba1728



Available Sizes

Size: 50ul

Size: 100ul

Size: 200ul



Specifications

Application:

WB,IP

Research Area:

Cancer,Stem cells,Cardiovascular,

Species Reactivity:

Human,Mouse

Host Species:

Rabbit

Immunogen / Amino acids:

A synthetic peptide corresponding to a sequence within amino acids 600 to the C-terminus of mouse CD31 (NP_001292086.1).

Isotype:

IgG

Form:

Liquid

Storage Buffer:

Buffer: PBS with 0.02% sodium azide, 50% glycerol, pH7.3.

Recommended Dilution:

WB 1:500 - 1:2000

IP 1:50 - 1:200

Storage Instruction:

Store at -20°C. Avoid freeze / thaw cycles.

Alternative Names:

PECAM1; CD31; CD31/EndoCAM; GPIIA'; PECA1; PECAM-1; endoCAM; platelet endothelial cell adhesion molecule

SwissProt:

P16284

Gene ID:

18613

Calculated Molecular Weight:

79kDa/80kDa/81kDa/82kDa

Observed Molecular Weight:

130kDa

Sequence:

VVIATLIVA AKCYFLRKAKAKQKPVEMSRPAAPLLNSNSEKISEPSVEANSHYGYDDVSGNDAVKPINQNKDPQNM DVEYTEVEVSSLEP
HQALGTRATETVYSEIRKVDPNLMENRYSRTEGSLNGT

Purification:

Affinity purification

Positive Control:

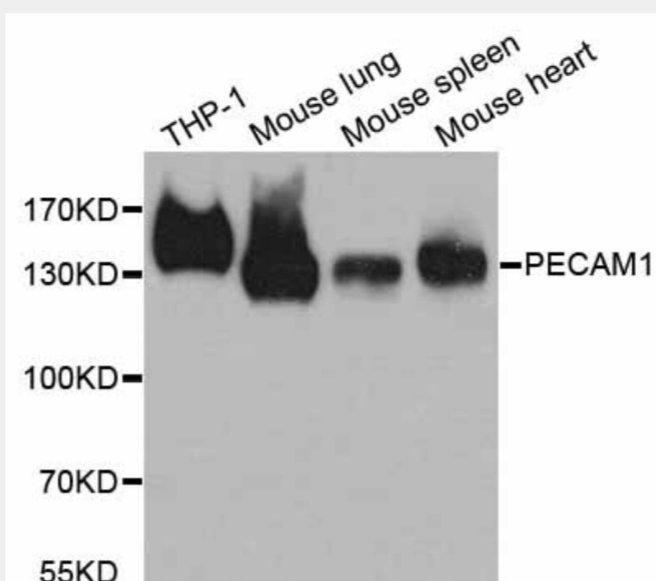
THP-1, Mouse lung, Mouse spleen, Mouse heart

Cellular Location:

Cell junction,Cell junction,Cell membrane,Lipid-anchor,Single-pass type I membrane protein,

Product Description

The protein encoded by this gene is found on the surface of platelets, monocytes, neutrophils, and some types of T-cells, and makes up a large portion of endothelial cell intercellular junctions. The encoded protein is a member of the immunoglobulin superfamily and is likely involved in leukocyte migration, angiogenesis, and integrin activation.



Western blot analysis of extracts of various cell lines, using CD31 antibody at 1:1000 dilution.
Secondary antibody: HRP Goat Anti-Rabbit IgG (H+L) at 1:10000 dilution.
Lysates/proteins: 25ug per lane.
Blocking buffer: 3% nonfat dry milk in TBST.
Detection: ECL Basic Kit.
Exposure time: 30s.

All products are for RESEARCH USE ONLY. Not for diagnostic & therapeutic purposes!