

c-Jun Polyclonal Antibody

Catalog No: tcba1664



Available Sizes

Size: 50ul

Size: 100ul

Size: 200ul



Specifications

Application:

WB

Research Area:

Cancer,Immunology,Innate Immunity,Epigenetics,

Species Reactivity:

Human,Mouse,Rat

Host Species:

Rabbit

Isotype:

IgG

Form:

Liquid

Storage Buffer:

Buffer: PBS with 0.02% sodium azide, 50% glycerol, pH7.3.

Recommended Dilution:

WB 1:500 - 1:2000

Storage Instruction:

Store at -20°C. Avoid freeze / thaw cycles.

Alternative Names:

AP-1;AP1;c-Jun

SwissProt:

P05412

Gene ID:

3725 (human);

Calculated Molecular Weight:

35kDa

Purification:

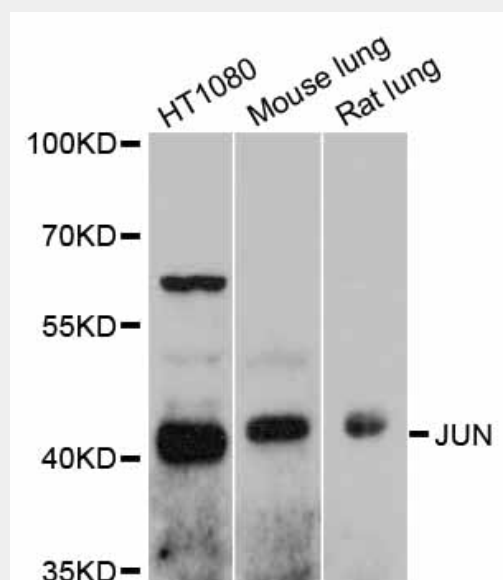
Affinity purification

Cellular Location:

Nucleus,

Product Description

This gene is the putative transforming gene of avian sarcoma virus 17. It encodes a protein which is highly similar to the viral protein, and which interacts directly with specific target DNA sequences to regulate gene expression. This gene is intronless and is mapped to 1p32-p31, a chromosomal region involved in both translocations and deletions in human malignancies.



Western blot analysis of extracts of various cell lines, using JUN antibody at 1:1000 dilution.

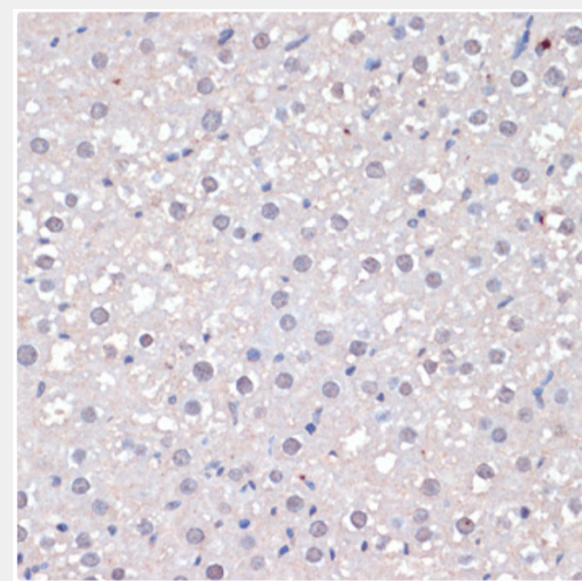
Secondary antibody: HRP Goat Anti-Rabbit IgG (H+L) at 1:10000 dilution.

Lysates/proteins: 25ug per lane.

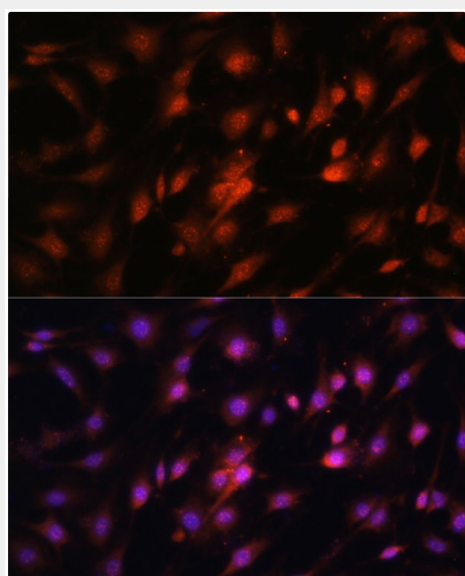
Blocking buffer: 3% nonfat dry milk in TBST.

Detection: ECL Basic Kit.

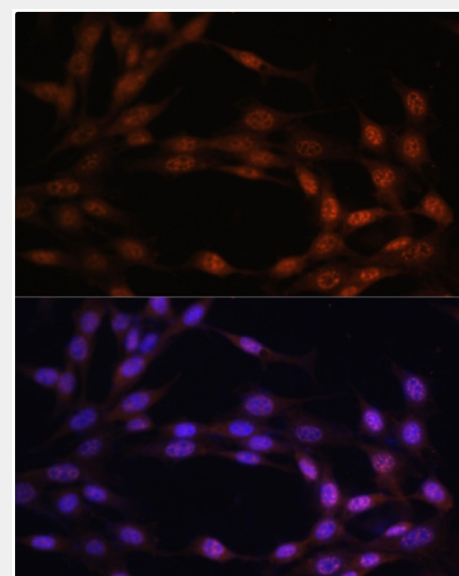
Exposure time: 30s.



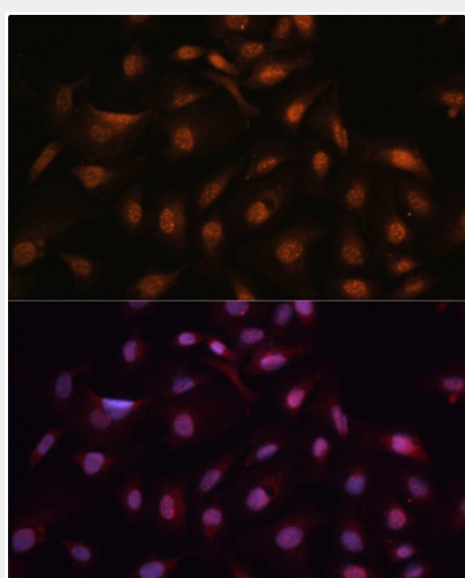
Immunohistochemistry of paraffin-embedded rat liver using c-Jun antibody (tcba1663) at dilution of 1:100 (40x lens).



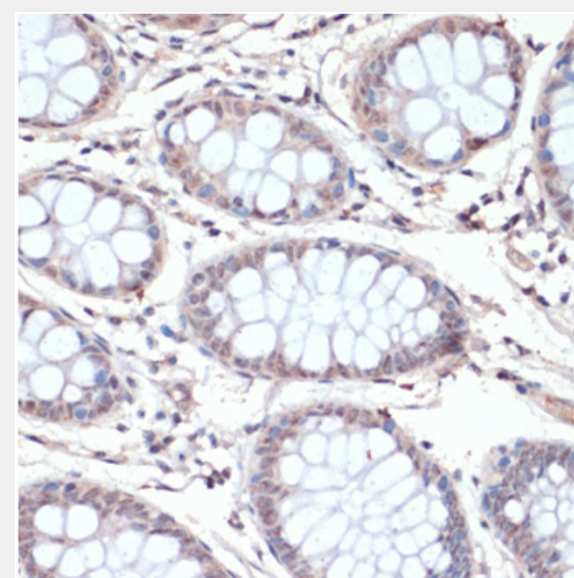
Immunofluorescence analysis of C6 cells using c-Jun antibody (tcba1663) at dilution of 1:100. Blue: DAPI for nuclear staining.



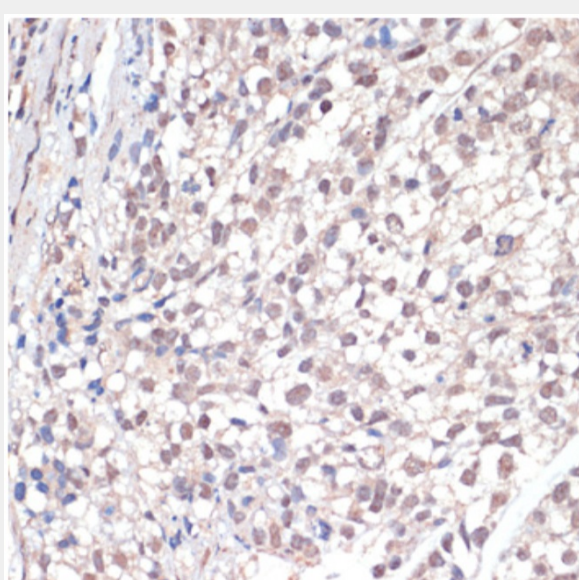
Immunofluorescence analysis of NIH/3T3 cells using c-Jun antibody (tcba1663) at dilution of 1:100. Blue: DAPI for nuclear staining.



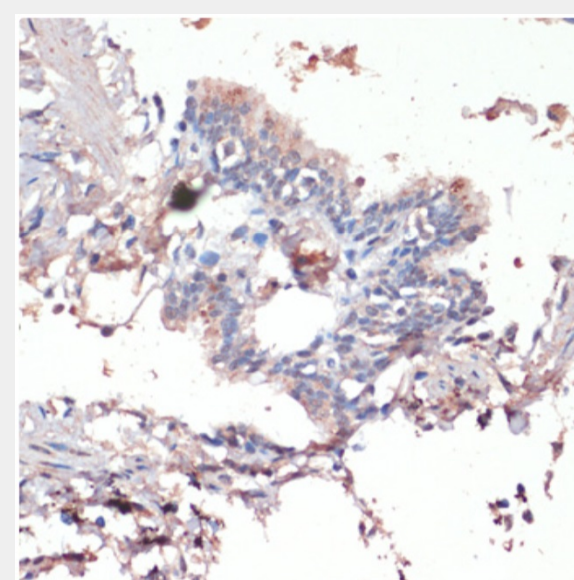
Immunofluorescence analysis of U2OS cells using c-Jun antibody (tcba1663) at dilution of 1:100. Blue: DAPI for nuclear staining.



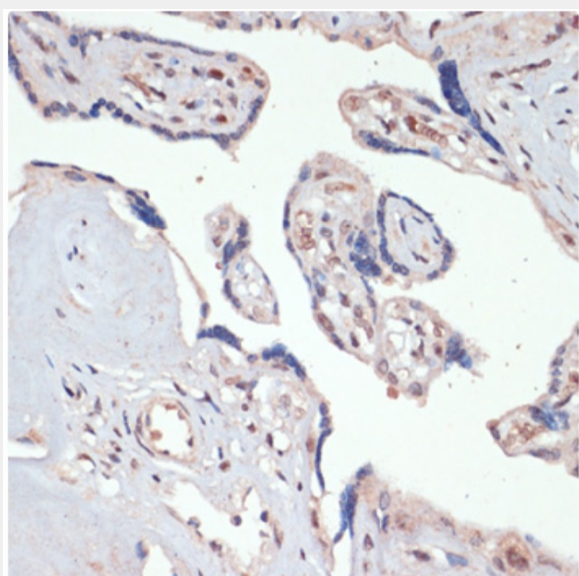
Immunohistochemistry of paraffin-embedded human colon using c-Jun antibody (tcba1663) at dilution of 1:100 (40x lens).



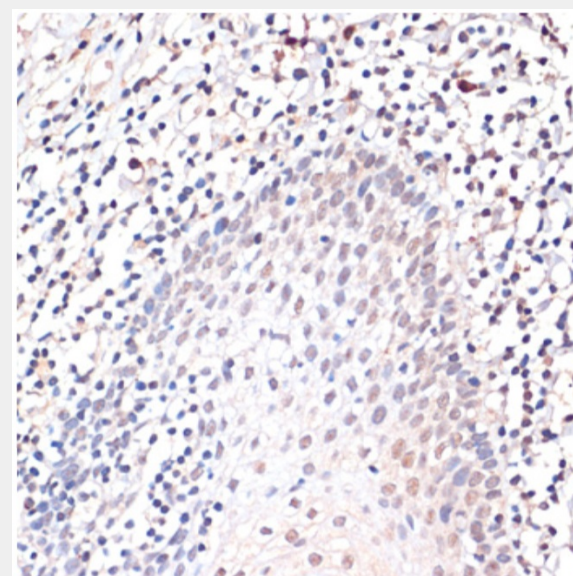
Immunohistochemistry of paraffin-embedded human gastric cancer using c-Jun antibody (tcba1663) at dilution of 1:100 (40x lens).



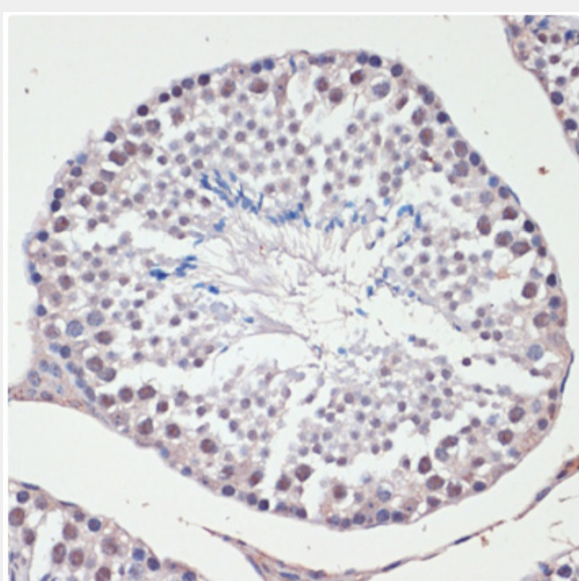
Immunohistochemistry of paraffin-embedded human lung using c-Jun antibody (tcba1663) at dilution of 1:100 (40x lens).



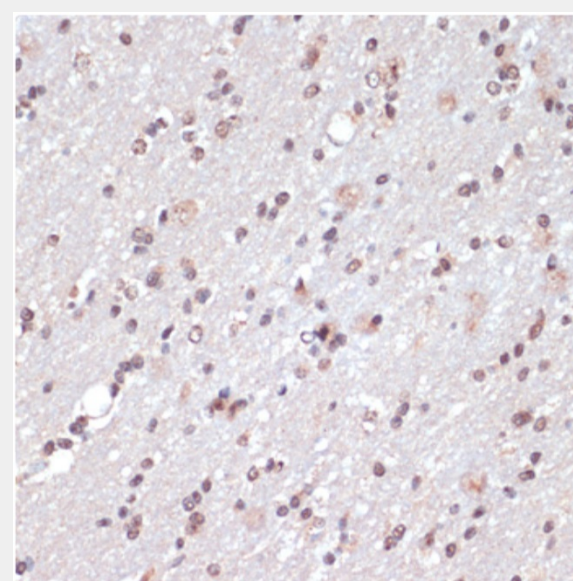
Immunohistochemistry of paraffin-embedded human placenta using c-Jun antibody (tcba1663) at dilution of 1:100 (40x lens).



Immunohistochemistry of paraffin-embedded human tonsil using c-Jun antibody (tcba1663) at dilution of 1:100 (40x lens).



Immunohistochemistry of paraffin-embedded mouse testis using c-Jun antibody (tcba1663) at dilution of 1:100 (40x lens).



Immunohistochemistry of paraffin-embedded rat brain using c-Jun antibody (tcba1663) at dilution of 1:100 (40x lens).

All products are for RESEARCH USE ONLY. Not for diagnostic & therapeutic purposes!