

# mTOR Polyclonal Antibody

Catalog No: tcba1652



## Available Sizes

---

**Size:** 50ul

---

**Size:** 100ul

---

**Size:** 200ul

---



## Specifications

---

**Application:**

WB,IHC,IF

---

**Research Area:**

Cancer,Cell cycle,Autophagy pathway,AKT pathway,mTOR pathway,Cardiovascular,Cell Biology,Metabolism,DNA Damage/Repair,TGF- $\beta$  SMAD pathway,JAK STAT pathway,AMPK pathway,PI3K-Akt pathway,Epigenetics,

---

**Species Reactivity:**

Human,Mouse,Rat

---

**Host Species:**

Rabbit

---

**Immunogen / Amino acids:**

Recombinant fusion protein containing a sequence corresponding to amino acids 2388-2487 of human mTOR (NP\_004949.1).

---

**Isotype:**

IgG

---

**Form:**

Liquid

---

**Storage Buffer:**

Buffer: PBS with 0.02% sodium azide, 50% glycerol, pH7.3.

---

**Recommended Dilution:**

WB 1:500 - 1:2000

IHC 1:50 - 1:200

IF 1:50 - 1:200

**Storage Instruction:**

Store at -20°C. Avoid freeze / thaw cycles.

**SwissProt:**

P42345

**Gene ID:**

2475 (human);

**Calculated Molecular Weight:**

288kDa

**Observed Molecular Weight:**

289kDa

**Sequence:**

EVTGLDGNRYRITCHTVMEVLREHKDSVMAVLEAFVYDPLLNWRLMDTNTKGNKRSRTRTDSYSAGQSVEILDGVELGEPAHKKTGTTV  
PESIHSFIGDGL

**Purification:**

Affinity purification

**Positive Control:**

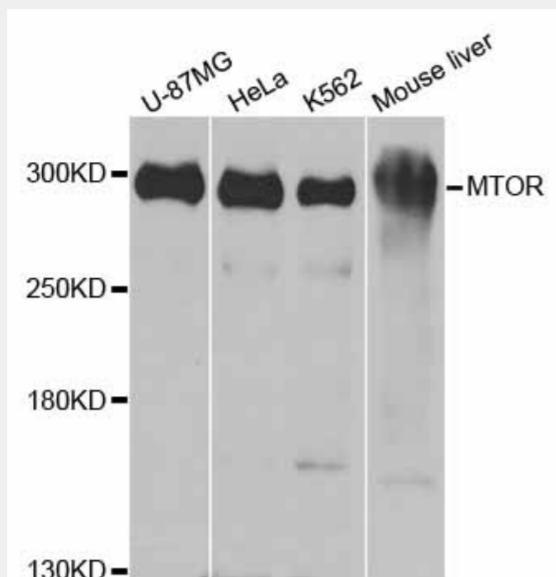
U-87MG, HeLa, K-562, Mouse liver

**Cellular Location:**

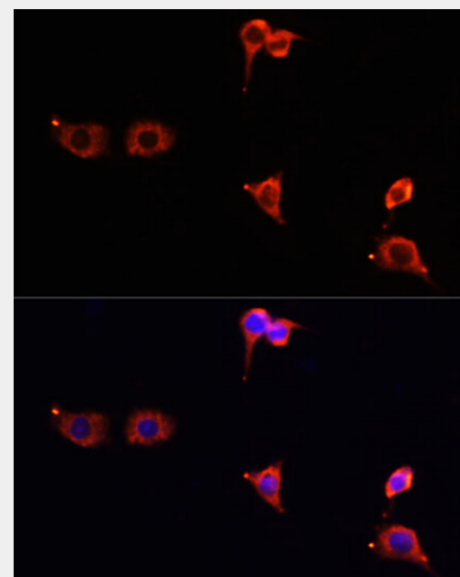
Cytoplasm,Cytoplasmic side,Endoplasmic reticulum membrane,Golgi apparatus membrane,Lysosome,Mitochondrion  
outer membrane,Nucleus,PML body,Peripheral membrane protein,

**Product Description**

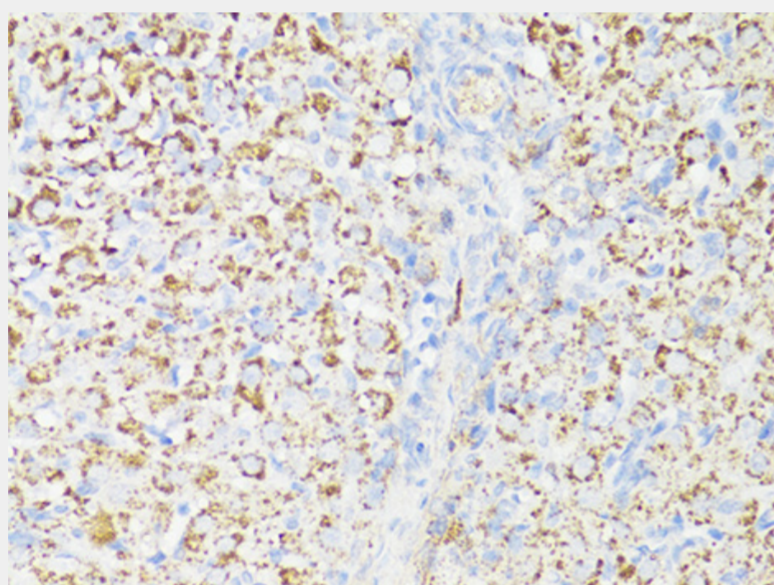
The protein encoded by this gene belongs to a family of phosphatidylinositol kinase-related kinases. These kinases mediate cellular responses to stresses such as DNA damage and nutrient deprivation. This protein acts as the target for the cell-cycle arrest and immunosuppressive effects of the FKBP12-rapamycin complex. The ANGPTL7 gene is located in an intron of this gene.



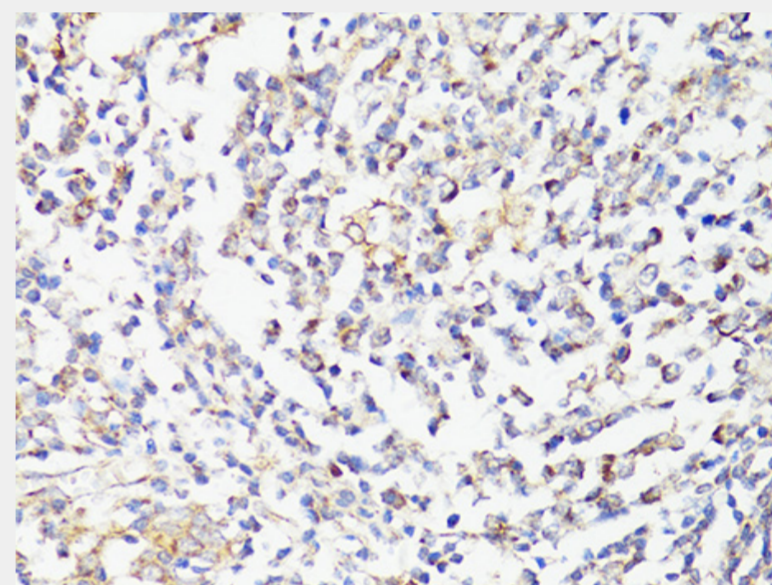
Western blot analysis of extracts of various cell lines, using mTOR antibody at 1:1000 dilution.  
Secondary antibody: HRP Goat Anti-Rabbit IgG (H+L) at 1:10000 dilution.  
Lysates/proteins: 25ug per lane.  
Blocking buffer: 3% nonfat dry milk in TBST.  
Detection: ECL Basic Kit.  
Exposure time: 30s.



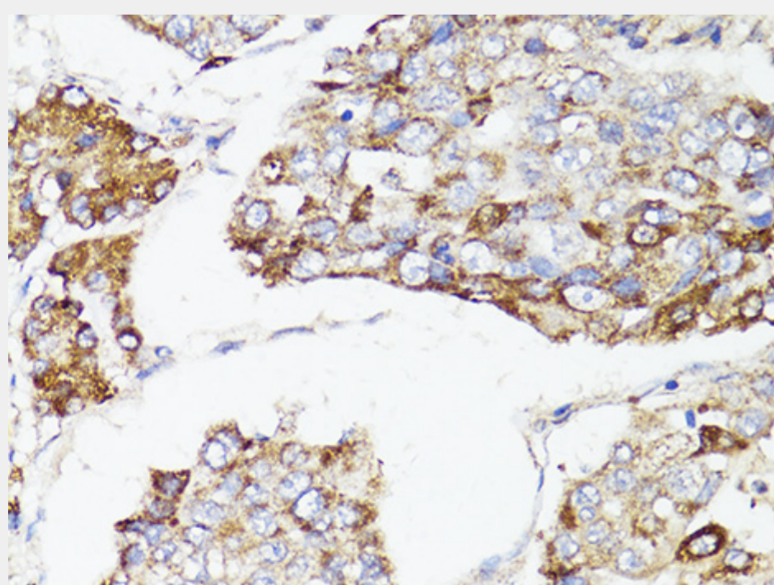
Immunofluorescence analysis of PC12 cells using mTOR antibody at dilution of 1:100. Blue: DAPI for nuclear staining.



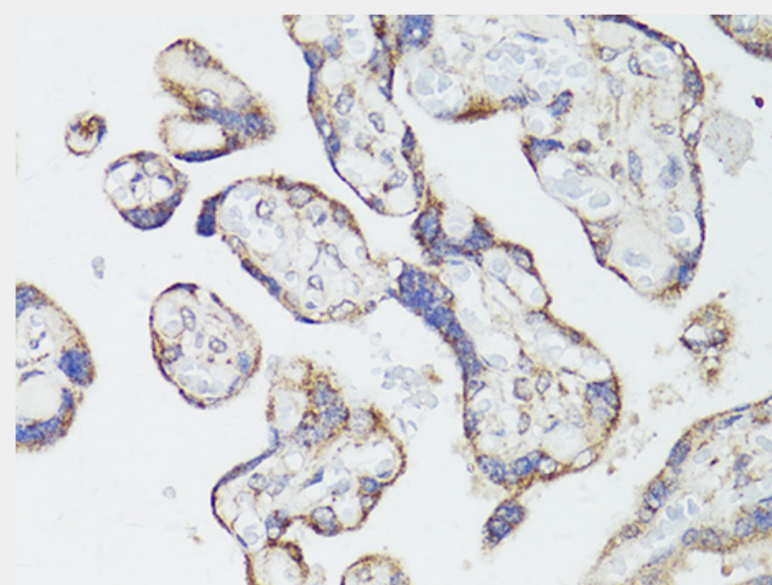
Immunohistochemistry of paraffin-embedded rat ovary using mTOR antibody at dilution of 1:150 (40x lens).



Immunohistochemistry of paraffin-embedded human tonsil using mTOR antibody at dilution of 1:150 (40x lens).

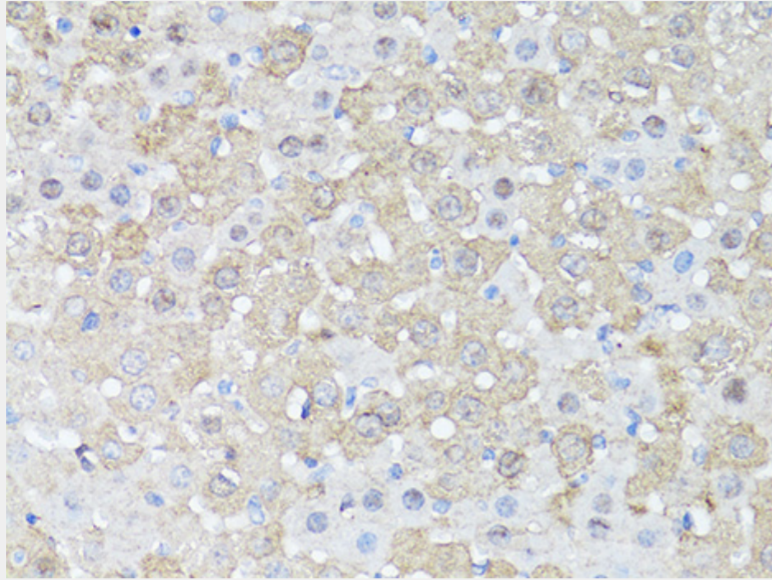


Immunohistochemistry of paraffin-embedded human liver cancer using mTOR antibody at dilution of 1:150 (40x lens).

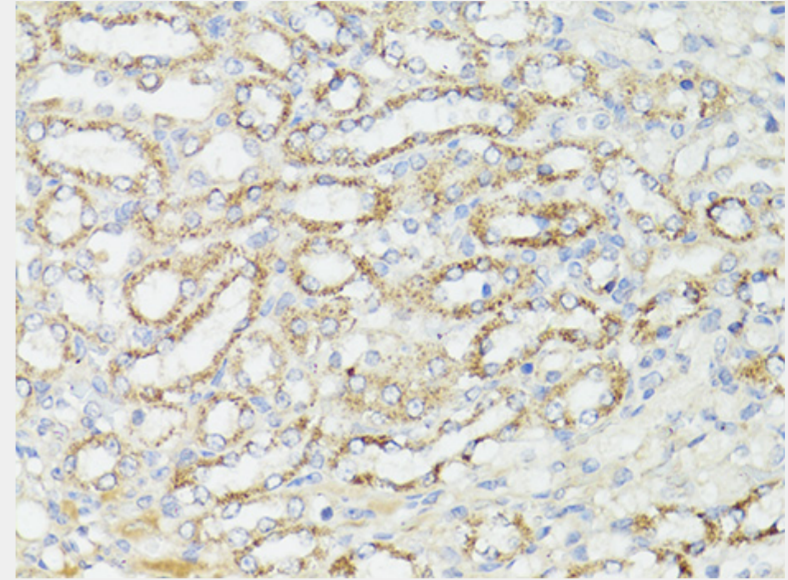


Immunohistochemistry of paraffin-embedded human placenta using mTOR antibody at dilution of 1:150 (40x lens).

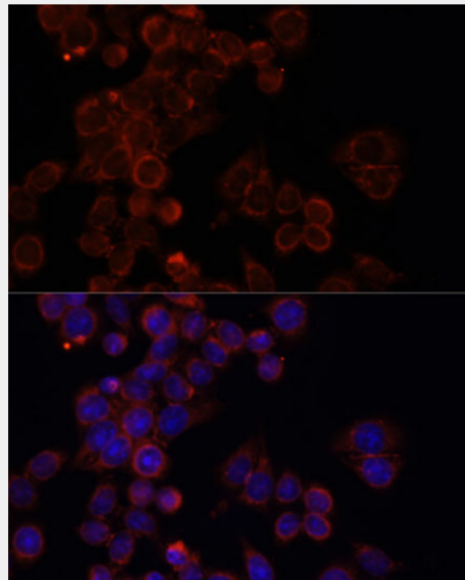




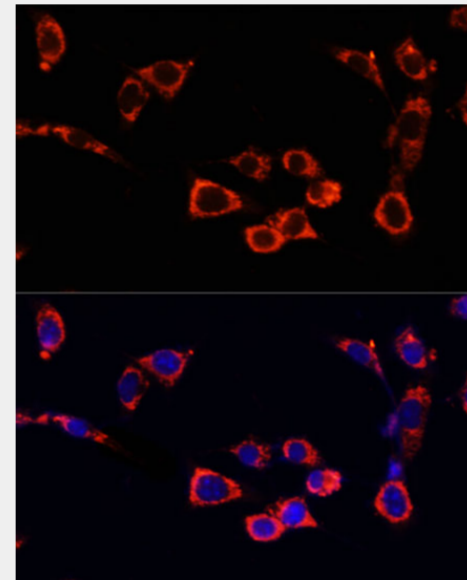
Immunohistochemistry of paraffin-embedded mouse liver using mTOR antibody at dilution of 1:150 (40x lens).



Immunohistochemistry of paraffin-embedded mouse kidney using mTOR antibody at dilution of 1:150 (40x lens).



Immunofluorescence analysis of HeLa cells using mTOR antibody at dilution of 1:100. Blue: DAPI for nuclear staining.



Immunofluorescence analysis of NIH/3T3 cells using mTOR antibody at dilution of 1:100. Blue: DAPI for nuclear staining.

All products are for RESEARCH USE ONLY. Not for diagnostic & therapeutic purposes!