

EGFR Polyclonal Antibody

Catalog No: tcba1650

KO VALIDATED



Available Sizes

Size: 50ul

Size: 100ul

Size: 200ul



Specifications

Application:

WB,IHC,IF,IP

Research Area:

Cancer,Tumor biomarkers,

Species Reactivity:

Human,Mouse,Rat

Host Species:

Rabbit

Isotype:

IgG

Form:

Liquid

Storage Buffer:

Buffer: PBS with 0.02% sodium azide, 50% glycerol, pH7.3.

Recommended Dilution:

WB 1:500 - 1:2000

IHC 1:50 - 1:200

IF 1:50 - 1:200

IP 1:50 - 1:100

Storage Instruction:

Store at -20°C. Avoid freeze / thaw cycles.

Alternative Names:

ERBB;ERBB1;HER1;mENA;NISBD2;PIG61

SwissProt:

P00533

Gene ID:

1956 (human);

Calculated Molecular Weight:

44kDa/69kDa/77kDa/134kDa

Purification:

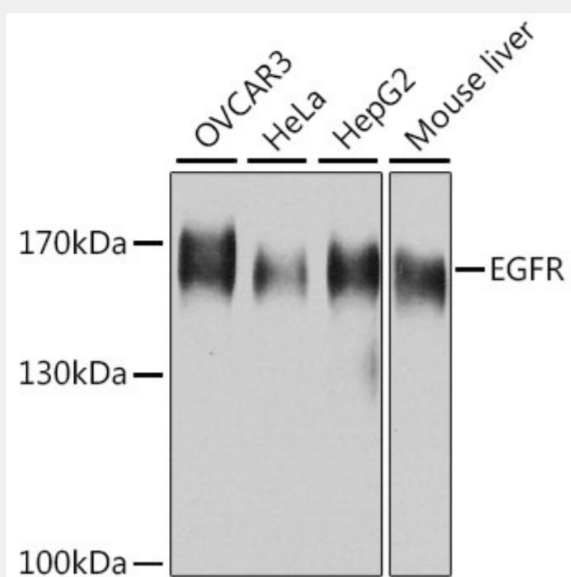
Affinity purification

Cellular Location:

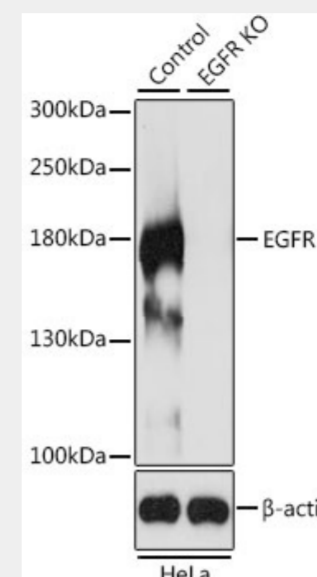
Cell membrane,Endoplasmic reticulum membrane,Endosome,Endosome membrane,Golgi apparatus membrane,Nucleus membrane,Nucleus,Secreted,Single-pass type I membrane protein,

Product Description

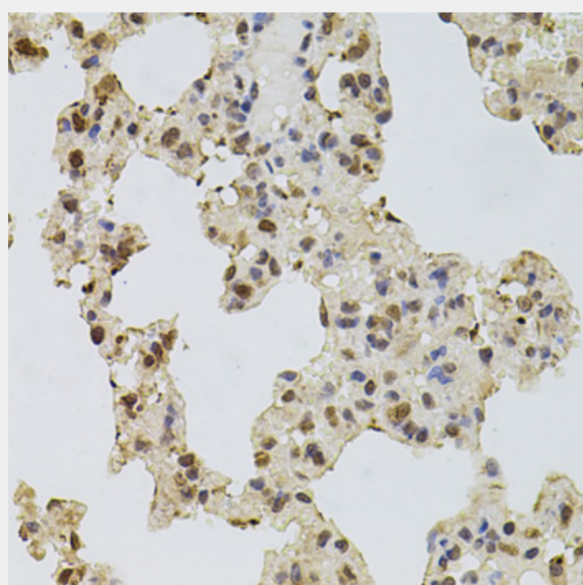
The protein encoded by this gene is a transmembrane glycoprotein that is a member of the protein kinase superfamily. This protein is a receptor for members of the epidermal growth factor family. EGFR is a cell surface protein that binds to epidermal growth factor. Binding of the protein to a ligand induces receptor dimerization and tyrosine autophosphorylation and leads to cell proliferation. Mutations in this gene are associated with lung cancer.



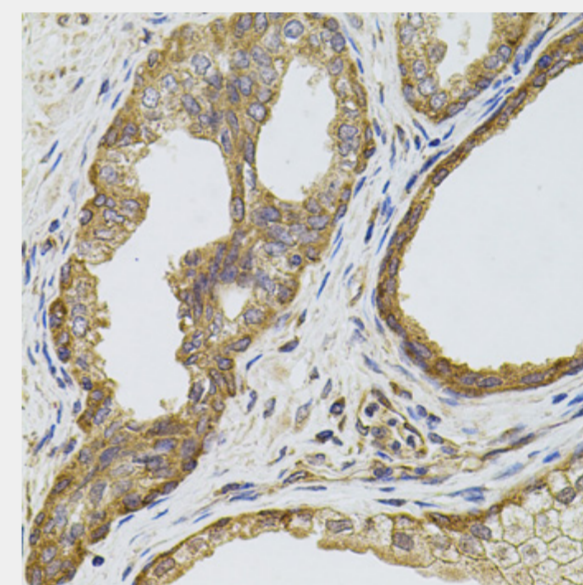
Western blot analysis of extracts of various cell lines, using EGFR antibody at 1:1000 dilution.
Secondary antibody: HRP Goat Anti-Rabbit IgG (H+L) at 1:10000 dilution.
Lysates/proteins: 25ug per lane.
Blocking buffer: 3% nonfat dry milk in TBST.
Detection: ECL Basic Kit.
Exposure time: 5s.



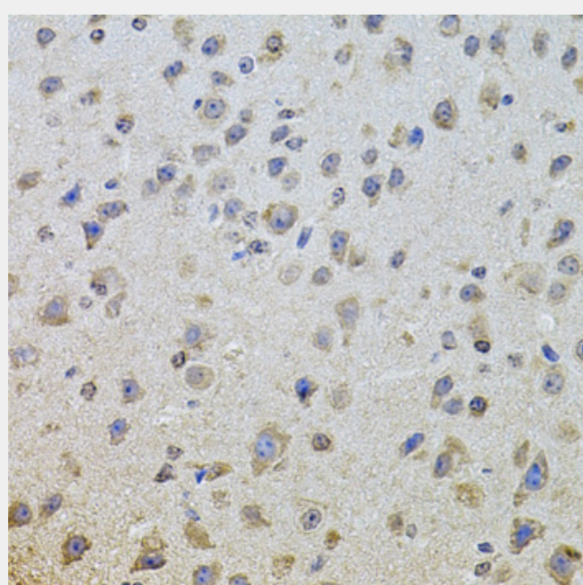
Western blot analysis of extracts from normal (control) and EGFR knockout (KO) HeLa cells, using EGFR antibody at 1:500 dilution.
Secondary antibody: HRP Goat Anti-Rabbit IgG (H+L) at 1:10000 dilution.
Lysates/proteins: 25ug per lane.
Blocking buffer: 3% nonfat dry milk in TBST.
Detection: ECL Basic Kit.
Exposure time: 1s.



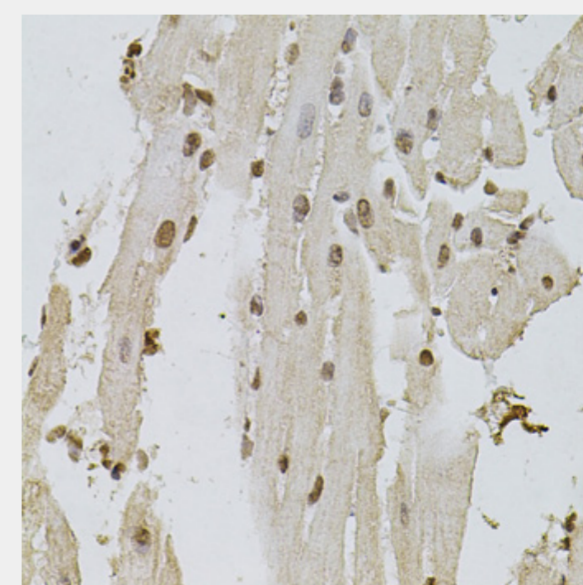
Immunohistochemistry of paraffin-embedded rat lung using EGFR antibody at dilution of 1:100 (40x lens).



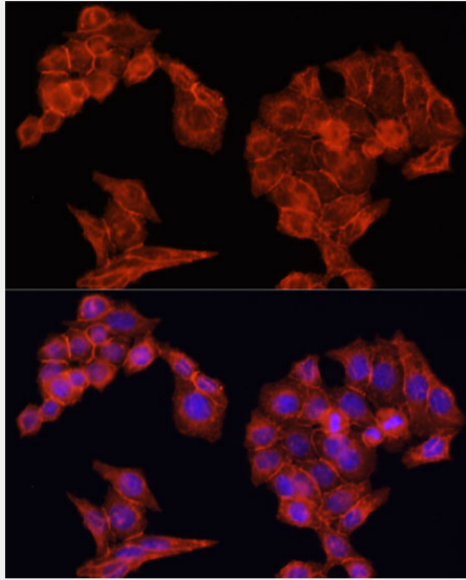
Immunohistochemistry of paraffin-embedded human prostate using EGFR antibody at dilution of 1:100 (40x lens).



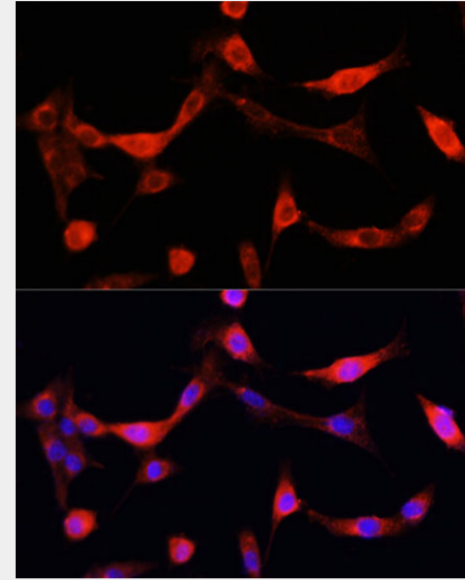
Immunohistochemistry of paraffin-embedded mouse brain using EGFR antibody at dilution of 1:100 (40x lens).



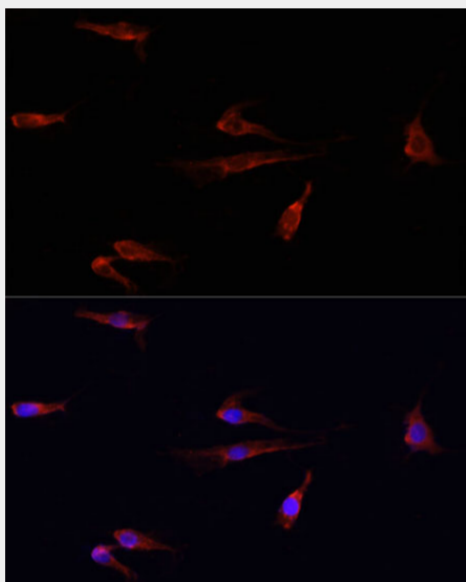
Immunohistochemistry of paraffin-embedded mouse heart using EGFR antibody at dilution of 1:100 (40x lens).



Immunofluorescence analysis of HeLa cells using EGFR antibody at dilution of 1:100.
Blue: DAPI for nuclear staining.



Immunofluorescence analysis of NIH/3T3 cells using EGFR antibody at dilution of 1:100. Blue: DAPI for nuclear staining.



Immunofluorescence analysis of PC12 cells using EGFR antibody at dilution of 1:100.
Blue: DAPI for nuclear staining.

All products are for RESEARCH USE ONLY. Not for diagnostic & therapeutic purposes!