

SUMO1 Monoclonal Antibody

Catalog No: tcba1595



Available Sizes

Size: 50ul

Size: 100ul

Size: 200ul



Specifications

Application:

WB,IHC,IF,IP

Research Area:

Cancer,Autophagy pathway,Cardiovascular,Cell Biology,Metabolism,NF-κB pathway,RNA Binding Protein(RBP),

Species Reactivity:

Human,Mouse,Rat

Host Species:

Rabbit

Isotype:

IgG

Form:

Liquid

Storage Buffer:

Buffer: PBS with 0.02% sodium azide, 50% glycerol, pH7.3.

Recommended Dilution:

WB 1:500 - 1:2000

IHC 1:50 - 1:200

IF 1:50 - 1:200

IP 1:20 - 1:50

Storage Instruction:

Store at -20°C. Avoid freeze / thaw cycles.

Alternative Names:

DAP1;GMP1;OFC10;PIC1;SEN2;SMT3;SMT3C;SMT3H3;UBL1

SwissProt:

P63165

Gene ID:

7341 (human);

Calculated Molecular Weight:

8kDa/11kDa

Purification:

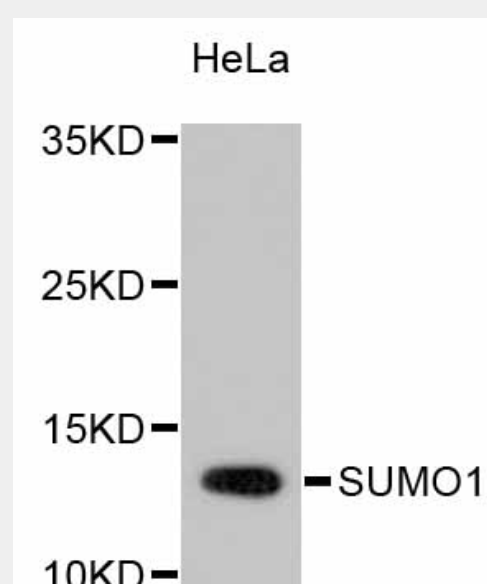
Affinity purification

Cellular Location:

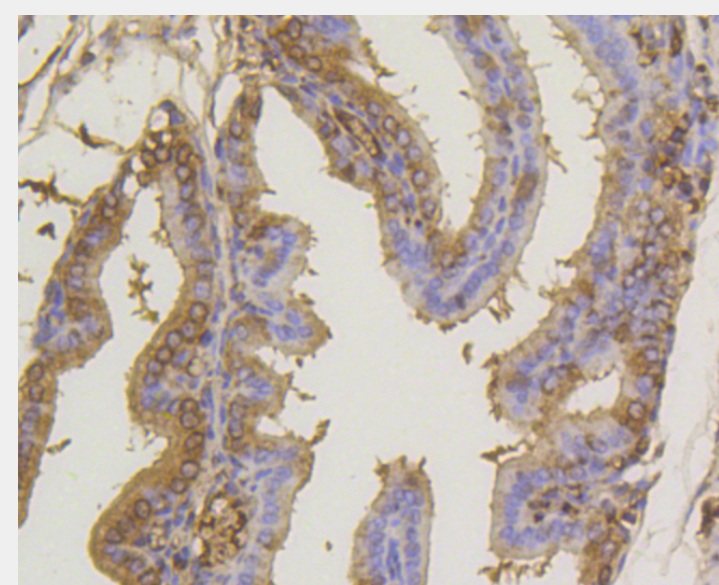
Cell membrane,Cytoplasm,Nucleus,Nucleus membrane,Nucleus speckle,PML body,

Product Description

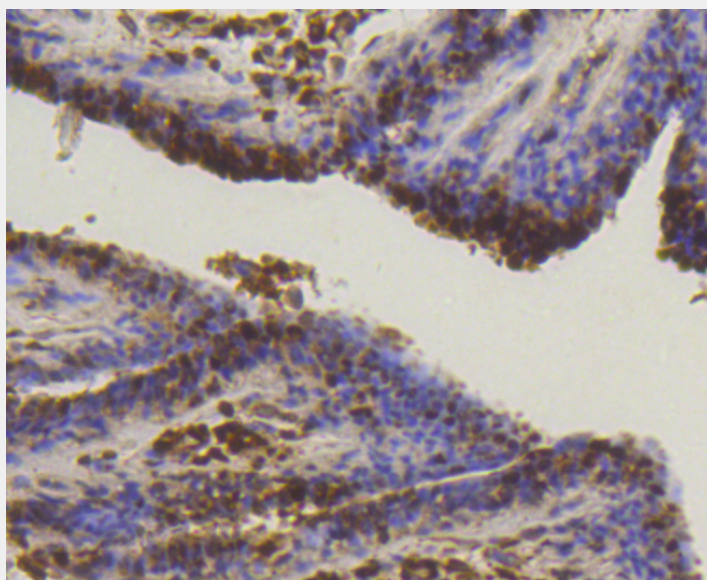
This gene encodes a protein that is a member of the SUMO (small ubiquitin-like modifier) protein family. It functions in a manner similar to ubiquitin in that it is bound to target proteins as part of a post-translational modification system. However, unlike ubiquitin which targets proteins for degradation, this protein is involved in a variety of cellular processes, such as nuclear transport, transcriptional regulation, apoptosis, and protein stability. It is not active until the last four amino acids of the carboxy-terminus have been cleaved off. Several pseudogenes have been reported for this gene. Alternate transcriptional splice variants encoding different isoforms have been characterized.



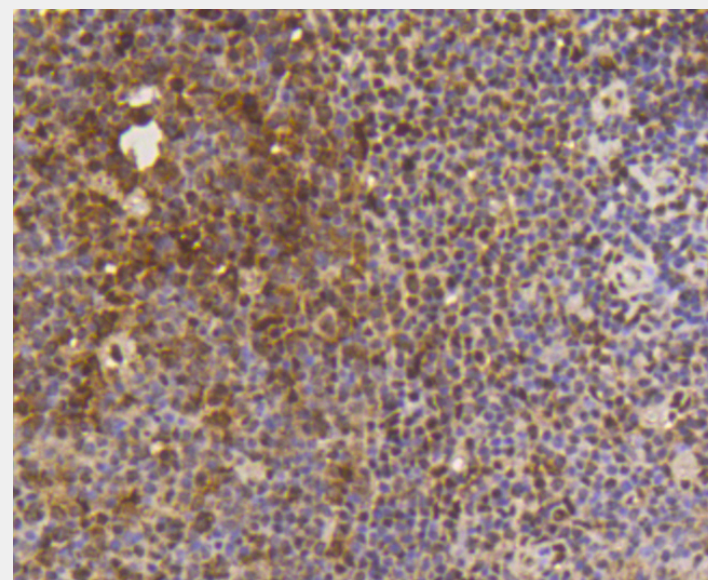
Western blot analysis of extracts of HeLa cells, using SUMO1 antibody.
Secondary antibody: HRP Goat Anti-Rabbit IgG (H+L) at 1:10000 dilution.
Lysates/proteins: 25ug per lane.
Blocking buffer: 3% nonfat dry milk in TBST.



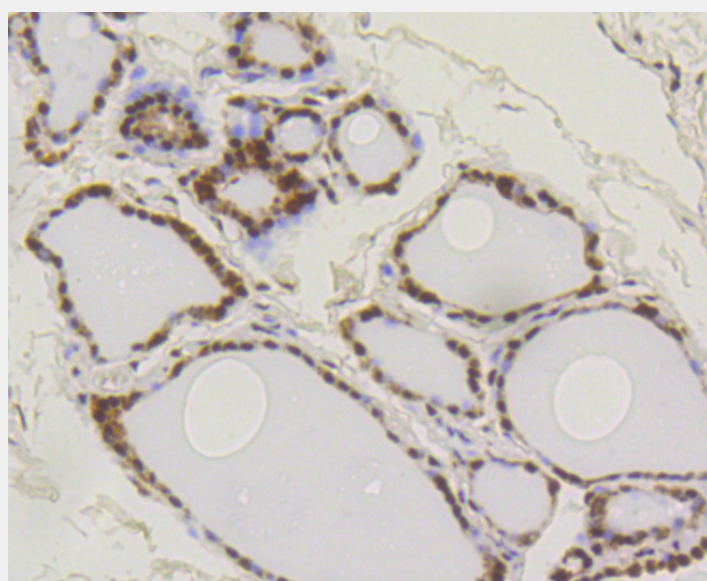
Immunohistochemistry of paraffin-embedded mouse placenta using SUMO1 antibody at dilution of 1:100 (40x lens).



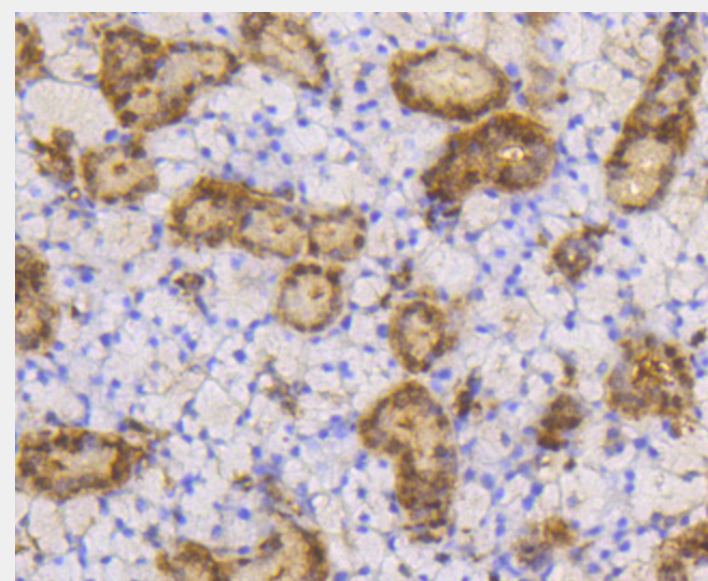
Immunohistochemistry of paraffin-embedded human mammary cancer using SUMO1 antibody at dilution of 1:100 (40x lens).



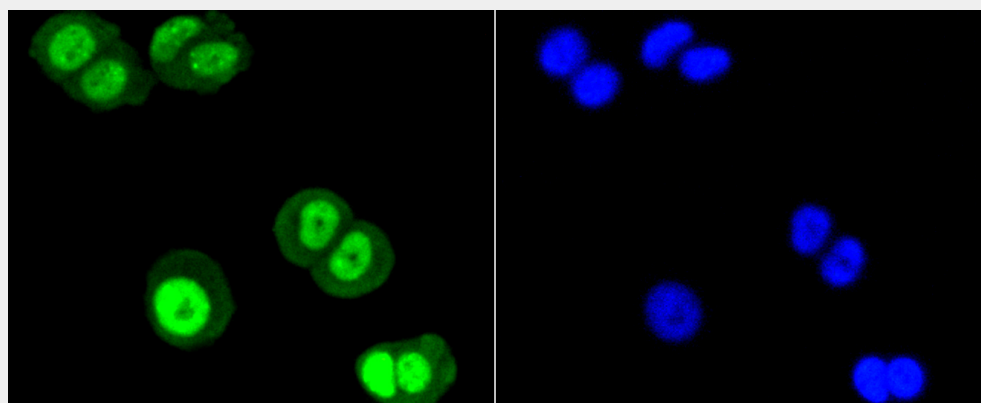
Immunohistochemistry of paraffin-embedded human tonsil using SUMO1 antibody at dilution of 1:100 (40x lens).



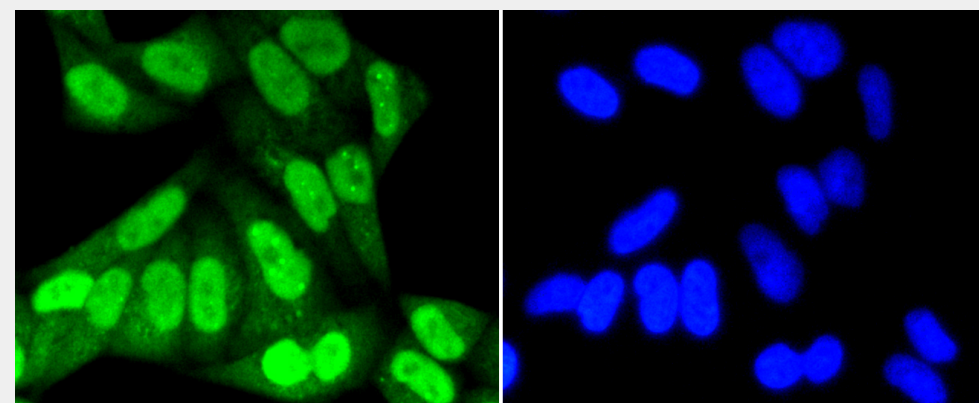
Immunohistochemistry of paraffin-embedded human thyroid using SUMO1 antibody at dilution of 1:100 (40x lens).



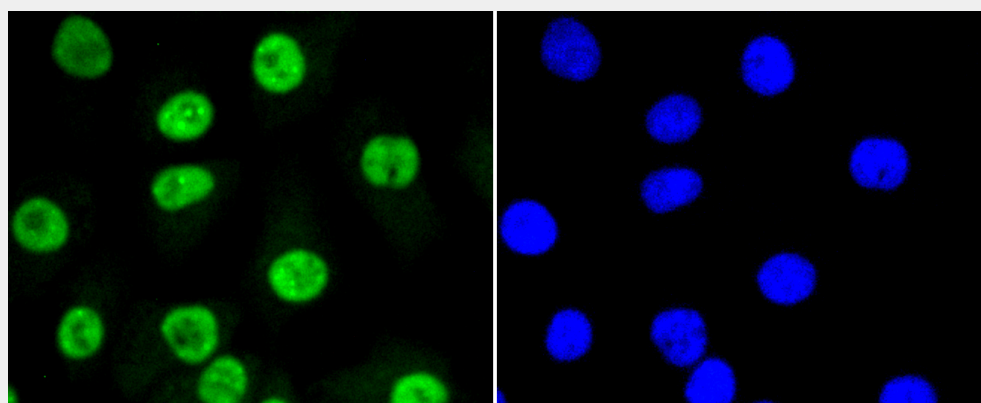
Immunohistochemistry of paraffin-embedded mouse thyroid using SUMO1 antibody at dilution of 1:100 (40x lens).



Immunofluorescence analysis of MCF-7 cells using SUMO1 antibody.



Immunofluorescence analysis of HeLa cells using SUMO1 antibody.



Immunofluorescence analysis of A549 cells using SUMO1 antibody.

All products are for RESEARCH USE ONLY. Not for diagnostic & therapeutic purposes!