

SLC2A1 Monoclonal Antibody

Catalog No: tcba1569



Available Sizes

Size: 50ul

Size: 100ul

Size: 200ul



Specifications

Application:

WB,IHC,IF

Research Area:

Cancer,Neuroscience,Cardiovascular,Metabolism,Neurodegeneration,

Species Reactivity:

Human,Mouse,Rat

Host Species:

Rabbit

Isotype:

IgG

Form:

Liquid

Storage Buffer:

Buffer: PBS with 0.02% sodium azide, 50% glycerol, pH7.3.

Recommended Dilution:

WB 1:500 - 1:2000

IHC 1:50 - 1:200

IF 1:50 - 1:200

Storage Instruction:

Store at -20°C. Avoid freeze / thaw cycles.

Alternative Names:

CSE; DYT17; DYT18; DYT9; EIG12; GLUT; GLUT-1; GLUT1; GLUT1DS; HTLVR; PED; SDCHCN

SwissProt:

P11166

Gene ID:

6513 (human);

Calculated Molecular Weight:

54kDa

Purification:

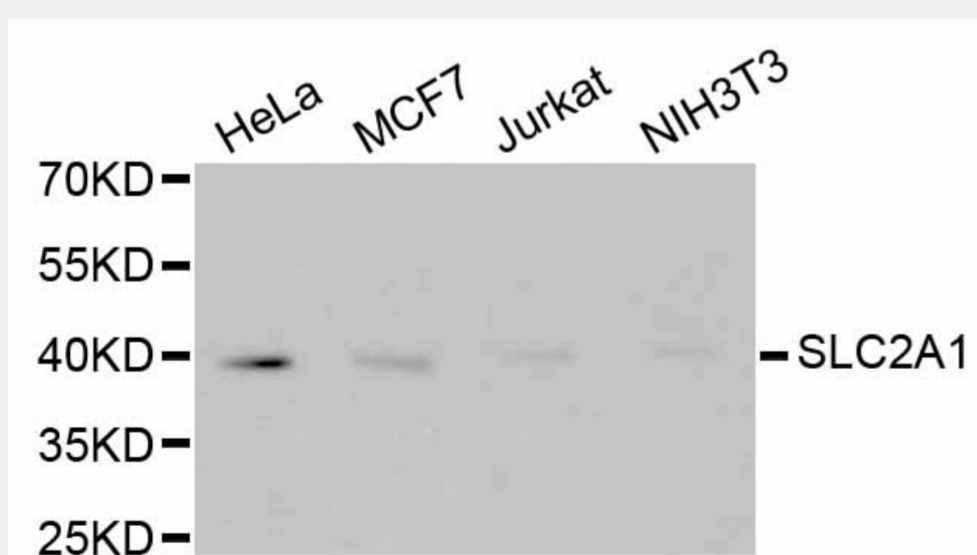
Affinity purification

Cellular Location:

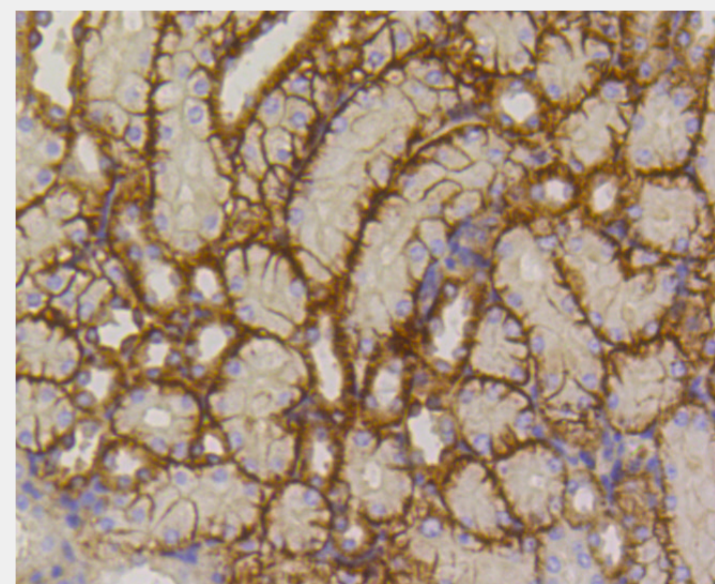
Cell membrane, Melanosome, Multi-pass membrane protein,

Product Description

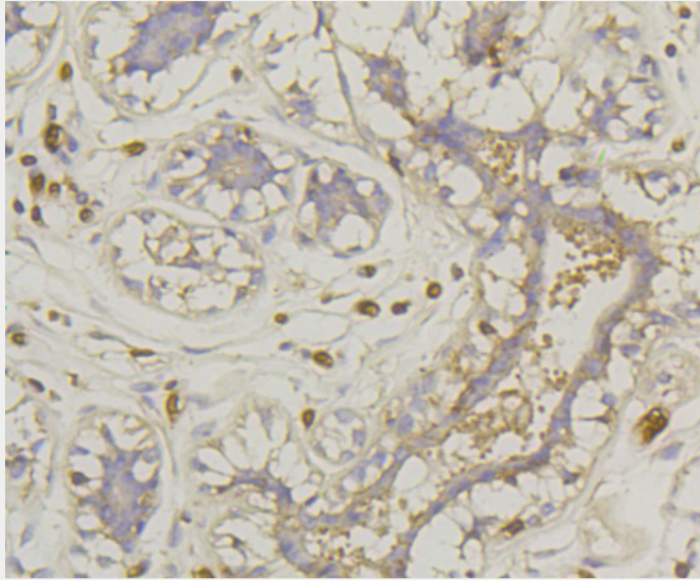
This gene encodes a major glucose transporter in the mammalian blood-brain barrier. The encoded protein is found primarily in the cell membrane and on the cell surface, where it can also function as a receptor for human T-cell leukemia virus (HTLV) I and II. Mutations in this gene have been found in a family with paroxysmal exertion-induced dyskinesia.



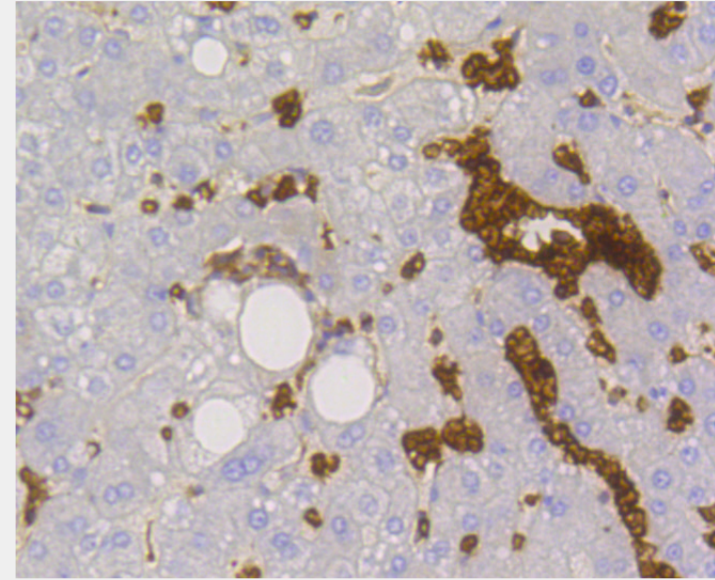
Western blot analysis of extracts of various cell lines, using SLC2A1 antibody.
Secondary antibody: HRP Goat Anti-Rabbit IgG (H+L) at 1:10000 dilution.
Lysates/proteins: 25ug per lane.
Blocking buffer: 3% nonfat dry milk in TBST.



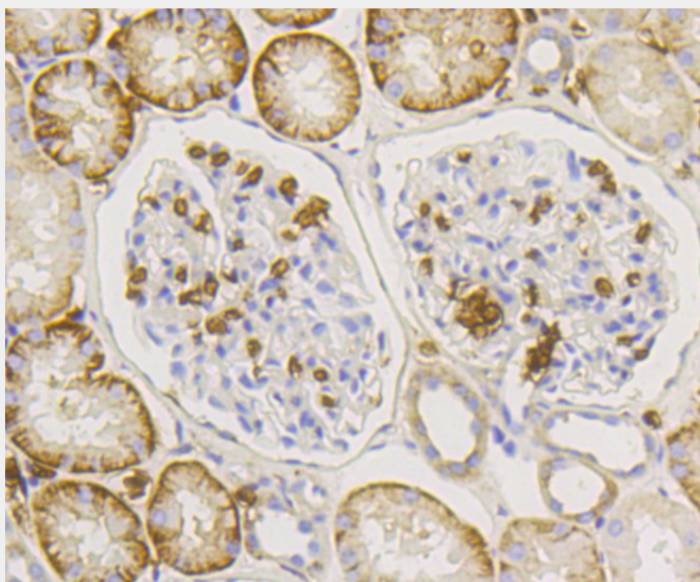
Immunohistochemistry of paraffin-embedded mouse kidney using SLC2A1 antibody at dilution of 1:100 (40x lens).



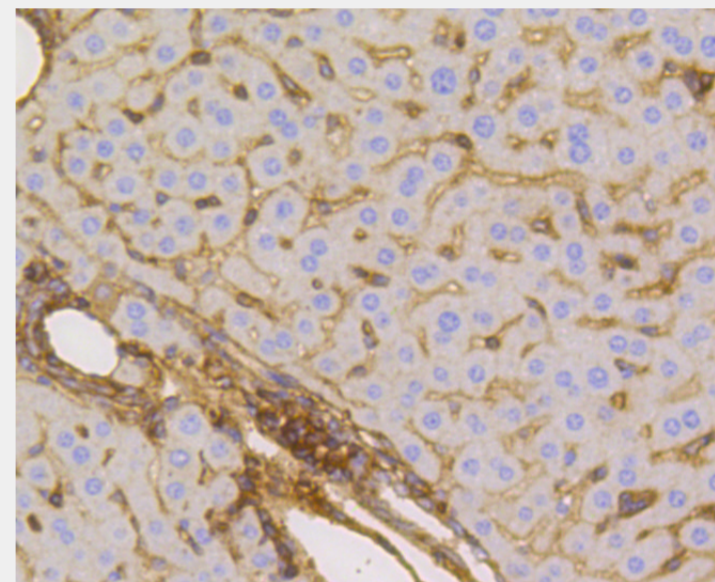
Immunohistochemistry of paraffin-embedded human mammary cancer using SLC2A1 antibody at dilution of 1:100 (40x lens).



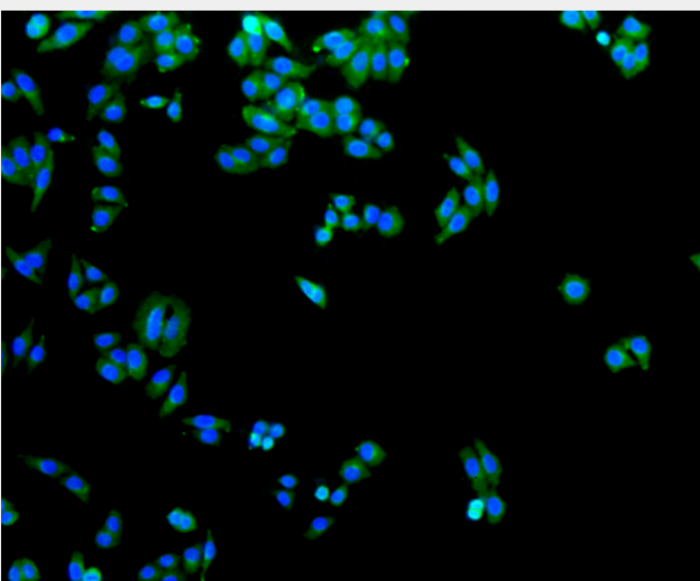
Immunohistochemistry of paraffin-embedded human liver using SLC2A1 antibody at dilution of 1:100 (40x lens).



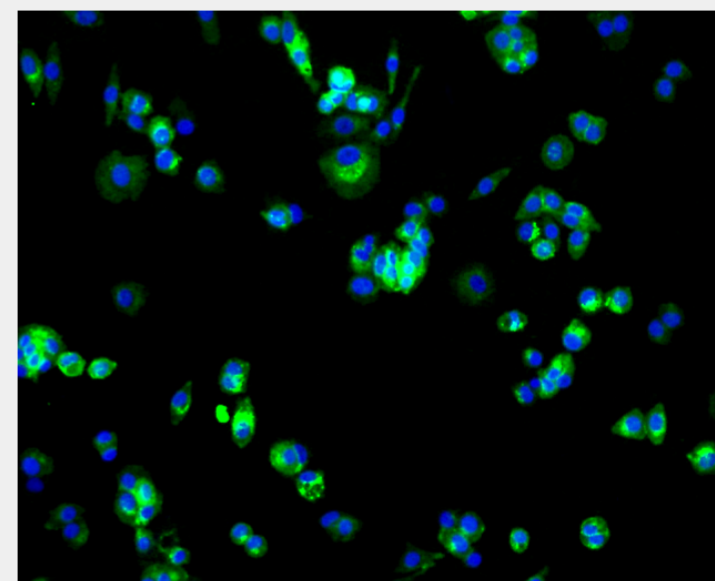
Immunohistochemistry of paraffin-embedded human kidney using SLC2A1 antibody at dilution of 1:100 (40x lens).



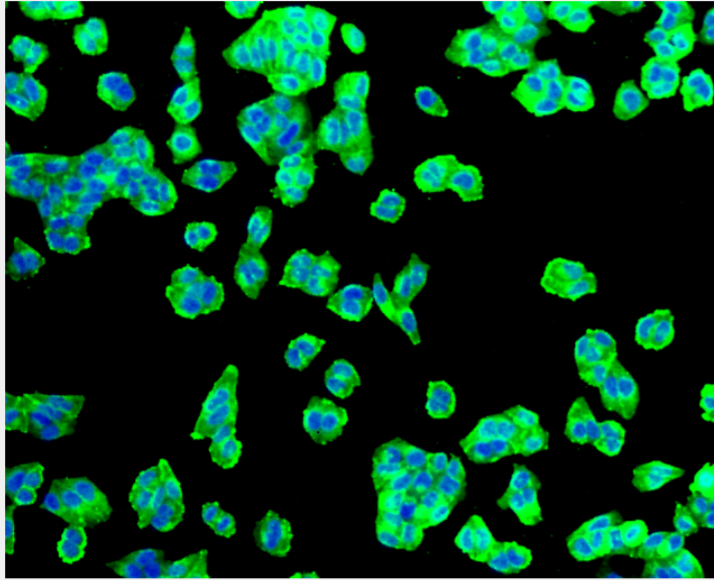
Immunohistochemistry of paraffin-embedded mouse liver using SLC2A1 antibody at dilution of 1:100 (40x lens).



Immunofluorescence analysis of HepG2 cells using SLC2A1 antibody.



Immunofluorescence analysis of MCF-7 cells using SLC2A1 antibody.



Immunofluorescence analysis of HeLa cells using SLC2A1 antibody.

All products are for RESEARCH USE ONLY. Not for diagnostic & therapeutic purposes!