

ALPL Monoclonal Antibody

Catalog No: tcba1549



Available Sizes

Size: 50ul

Size: 100ul

Size: 200ul



Specifications

Application:

WB,IHC,IF,IP

Research Area:

Cancer,Stem cells,Tumor biomarkers,

Species Reactivity:

Human,Mouse,Rat

Host Species:

Rabbit

Isotype:

IgG

Form:

Liquid

Storage Buffer:

Buffer: PBS with 0.02% sodium azide, 50% glycerol, pH7.3.

Recommended Dilution:

WB 1:5000 - 1:10000

IHC 1:50 - 1:200

IF 1:50 - 1:100

IP 1:20 - 1:50

Storage Instruction:

Store at -20°C. Avoid freeze / thaw cycles.

Alternative Names:

AP-TNAP;APTNAP;HOPS;TNAP;TNSALP

SwissProt:

P05186

Gene ID:

249 (human);

Calculated Molecular Weight:

48kDa/51kDa/57kDa

Purification:

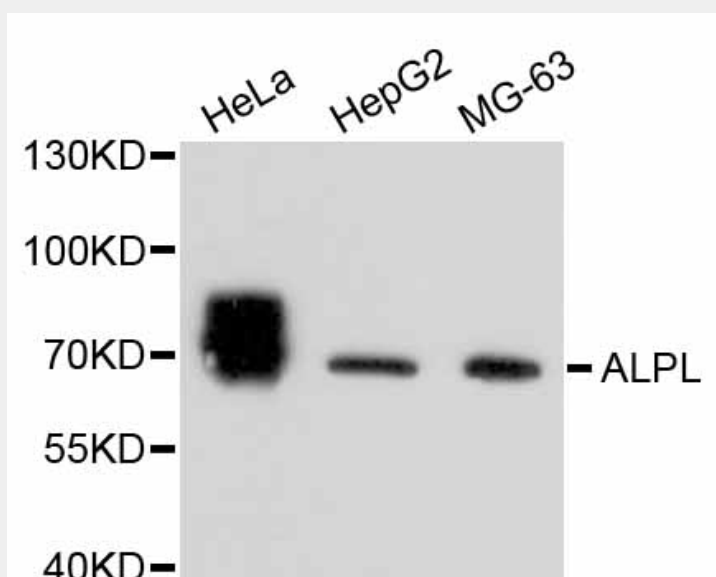
Affinity purification

Cellular Location:

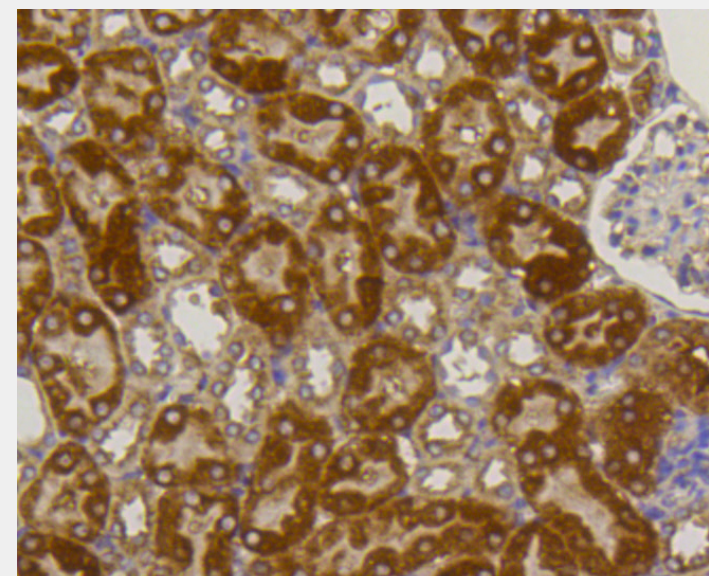
Cell membrane,GPI-anchor,Lipid-anchor,

Product Description

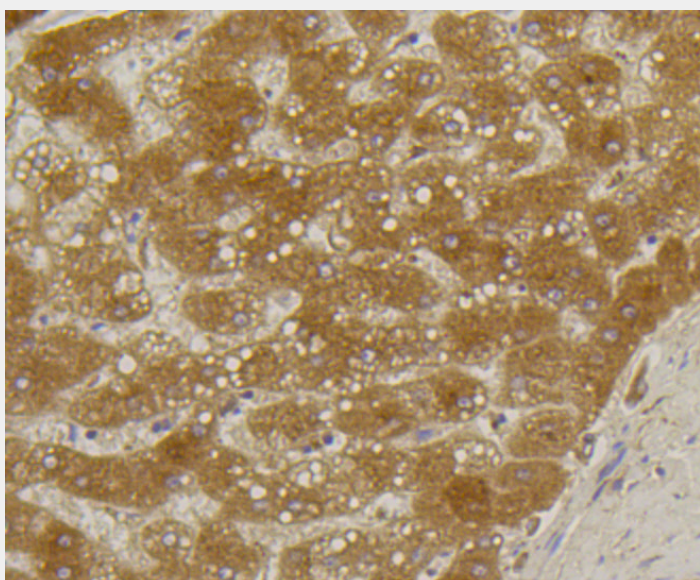
This gene encodes a member of the alkaline phosphatase family of proteins. There are at least four distinct but related alkaline phosphatases: intestinal, placental, placental-like, and liver/bone/kidney (tissue non-specific). The first three are located together on chromosome 2, while the tissue non-specific form is located on chromosome 1. The product of this gene is a membrane bound glycosylated enzyme that is not expressed in any particular tissue and is, therefore, referred to as the tissue-nonspecific form of the enzyme. Alternative splicing results in multiple transcript variants, at least one of which encodes a preproprotein that is proteolytically processed to generate the mature enzyme. This enzyme may play a role in bone mineralization. Mutations in this gene have been linked to hypophosphatasia, a disorder that is characterized by hypercalcemia and skeletal defects.



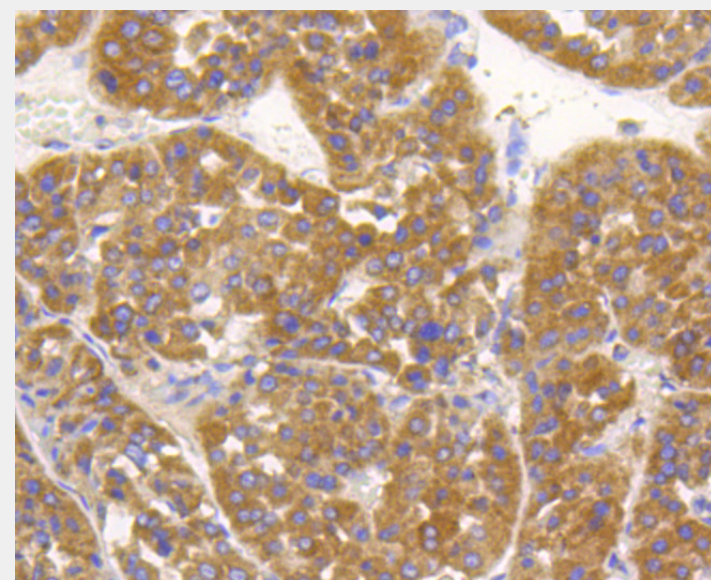
Western blot analysis of extracts of various cell lines, using ALPL antibody.
Secondary antibody: HRP Goat Anti-Rabbit IgG (H+L) at 1:10000 dilution.
Lysates/proteins: 25ug per lane.
Blocking buffer: 3% nonfat dry milk in TBST.



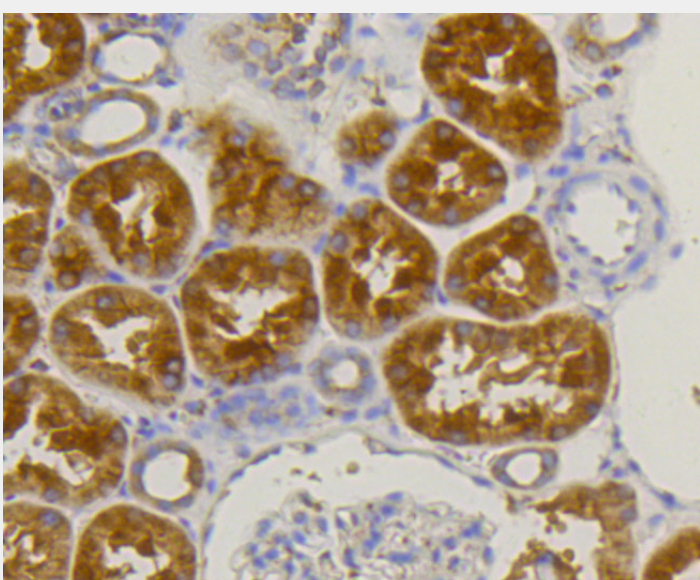
Immunohistochemistry of paraffin-embedded mouse kidney using ALPL antibody at dilution of 1:100 (40x lens).



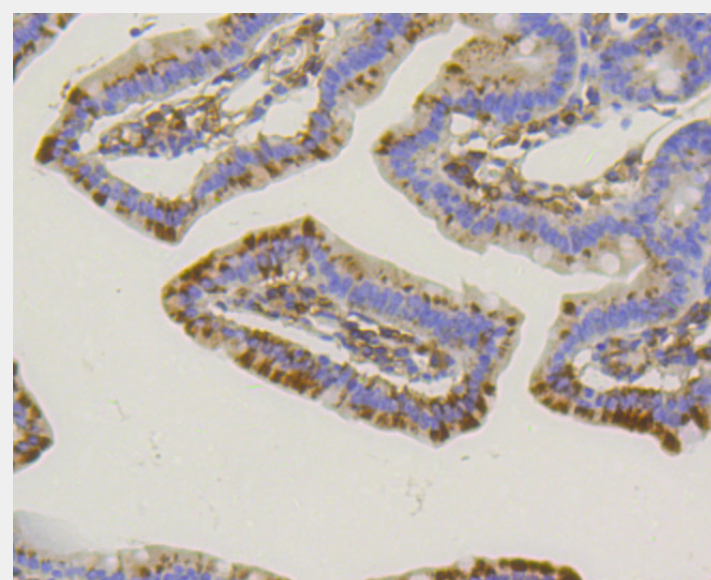
Immunohistochemistry of paraffin-embedded human liver using ALPL antibody at dilution of 1:100 (40x lens).



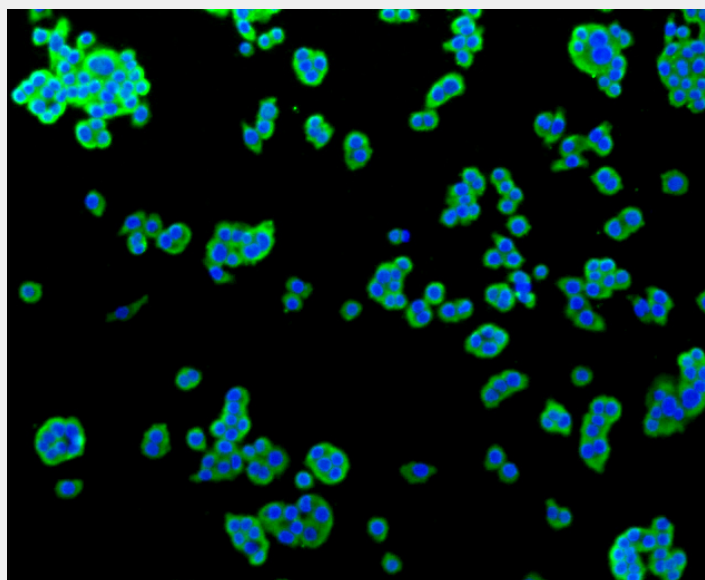
Immunohistochemistry of paraffin-embedded human liver cancer using ALPL antibody at dilution of 1:100 (40x lens).



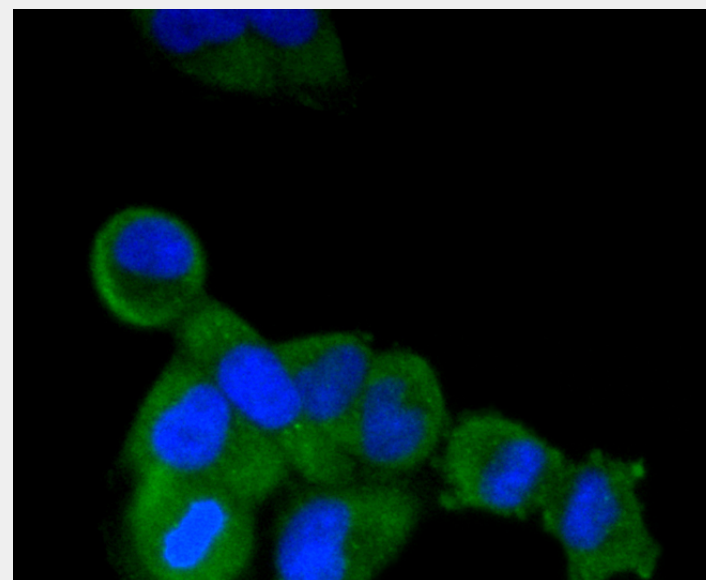
Immunohistochemistry of paraffin-embedded human kidney using ALPL antibody at dilution of 1:100 (40x lens).



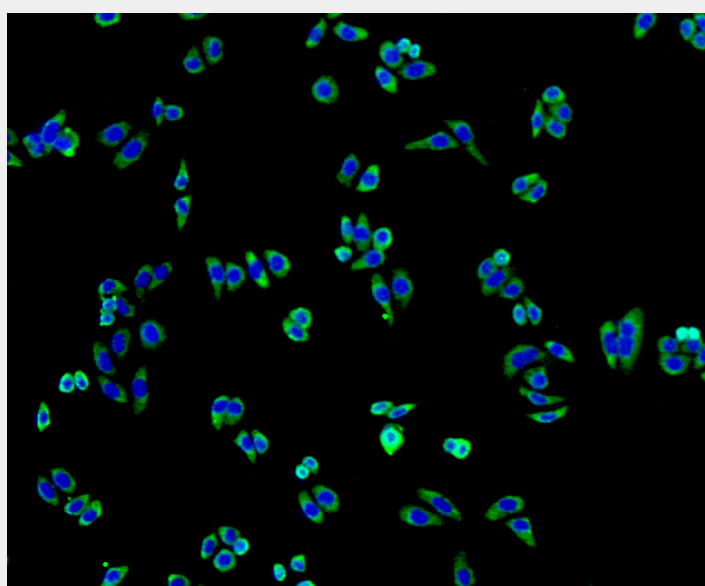
Immunohistochemistry of paraffin-embedded mouse intestine using ALPL antibody at dilution of 1:100 (40x lens).



Immunofluorescence analysis of SW480 cells using ALPL antibody.



Immunofluorescence analysis of HeLa cells using ALPL antibody.



Immunofluorescence analysis of HepG2 cells using ALPL antibody.

All products are for RESEARCH USE ONLY. Not for diagnostic & therapeutic purposes!