

PRKCA Monoclonal Antibody

Catalog No: tcba1530



Available Sizes

Size: 50ul

Size: 100ul

Size: 200ul



Specifications

Application:

WB,IHC,IF,IP

Research Area:

Cancer,Apoptosis,mTOR pathway,MAPK pathway,TGF- β SMAD pathway,MAPK/ERK pathway,Epigenetics,

Species Reactivity:

Human,Mouse,Rat

Host Species:

Rabbit

Isotype:

IgG

Form:

Liquid

Storage Buffer:

Buffer: PBS with 0.02% sodium azide, 50% glycerol, pH7.3.

Recommended Dilution:

WB 1:500 - 1:2000

IHC 1:50 - 1:200

IF 1:50 - 1:200

IP 1:20 - 1:50

Storage Instruction:

Store at -20°C. Avoid freeze / thaw cycles.

Alternative Names:

AAG6;PKC-alpha;PKCA;PRKACA

SwissProt:

P17252

Gene ID:

5578 (human);

Calculated Molecular Weight:

76kDa

Purification:

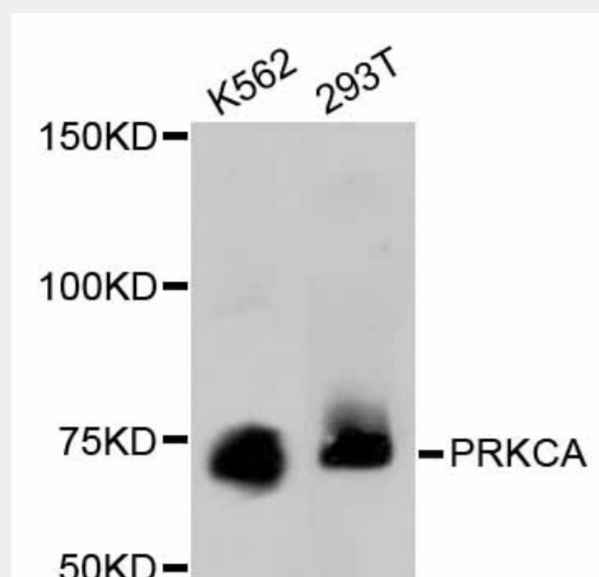
Affinity purification

Cellular Location:

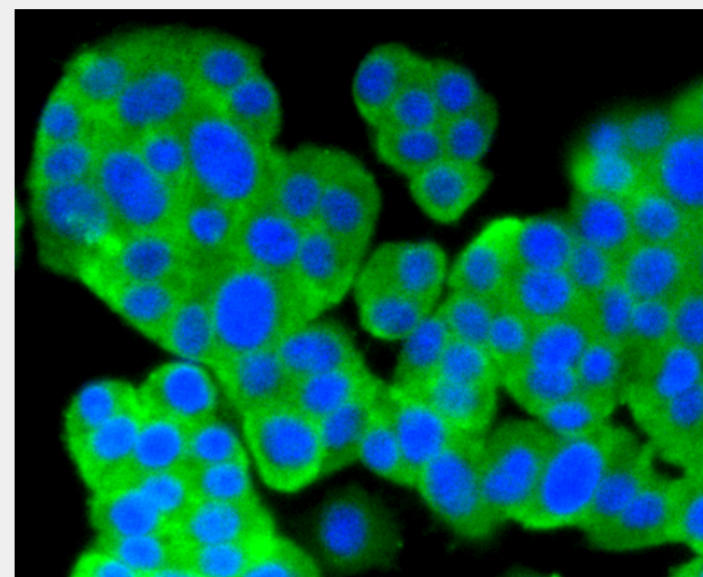
Cell membrane,Cytoplasm,Mitochondrion membrane,Nucleus,Peripheral membrane protein,

Product Description

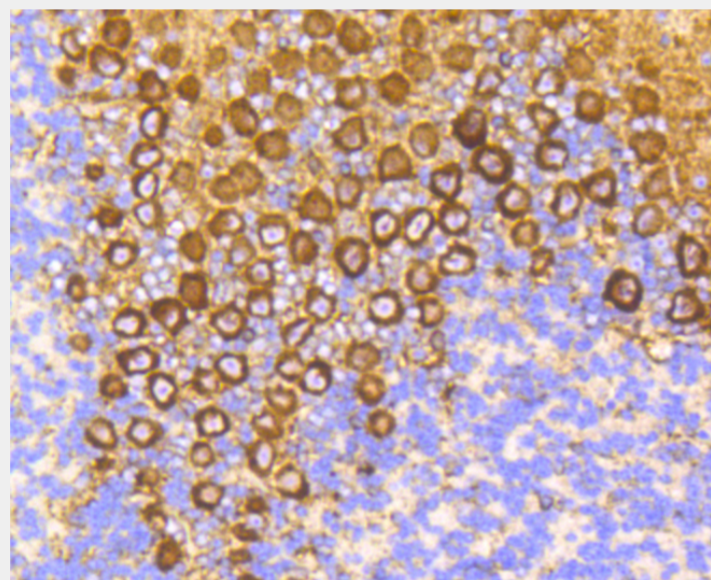
Protein kinase C (PKC) is a family of serine- and threonine-specific protein kinases that can be activated by calcium and the second messenger diacylglycerol. PKC family members phosphorylate a wide variety of protein targets and are known to be involved in diverse cellular signaling pathways. PKC family members also serve as major receptors for phorbol esters, a class of tumor promoters. Each member of the PKC family has a specific expression profile and is believed to play a distinct role in cells. The protein encoded by this gene is one of the PKC family members. This kinase has been reported to play roles in many different cellular processes, such as cell adhesion, cell transformation, cell cycle checkpoint, and cell volume control. Knockout studies in mice suggest that this kinase may be a fundamental regulator of cardiac contractility and Ca(2+) handling in myocytes.



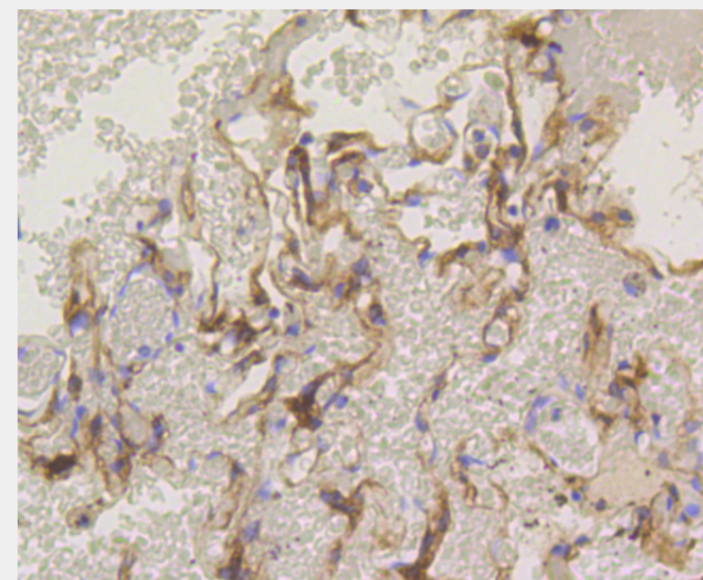
Western blot analysis of extracts of various cell lines, using PRKCA antibody.
Secondary antibody: HRP Goat Anti-Rabbit IgG (H+L) at 1:10000 dilution.
Lysates/proteins: 25ug per lane.
Blocking buffer: 3% nonfat dry milk in TBST.



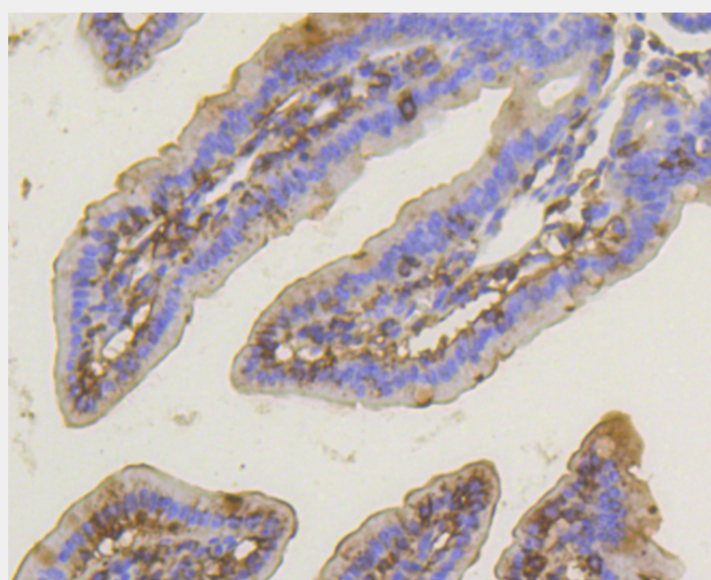
Immunofluorescence analysis of PC-12 cells using PRKCA antibody.



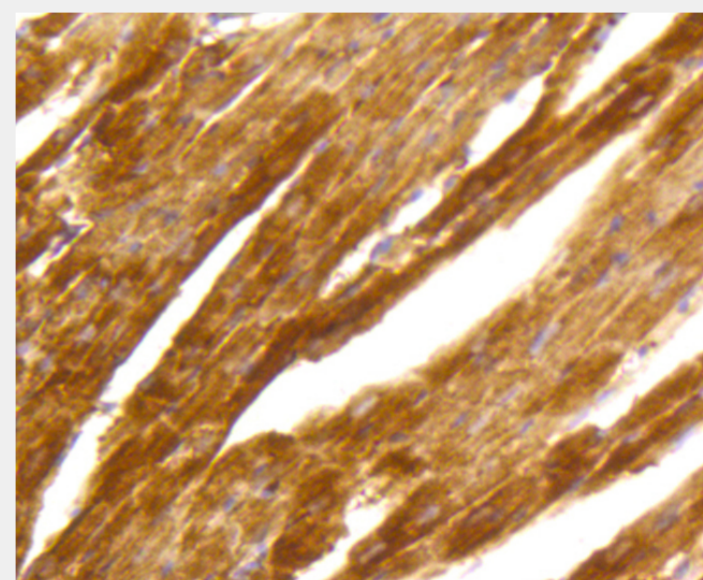
Immunohistochemistry of paraffin-embedded mouse brain using PRKCA antibody at dilution of 1:100 (40x lens).



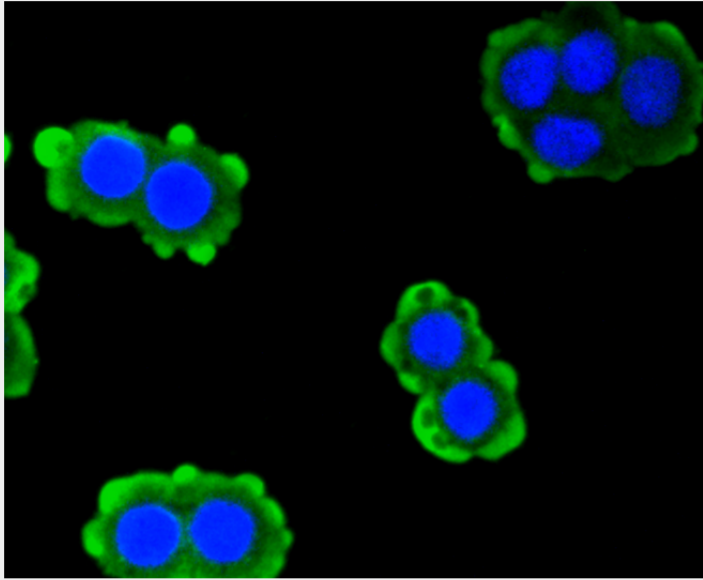
Immunohistochemistry of paraffin-embedded human lung using PRKCA antibody at dilution of 1:100 (40x lens).



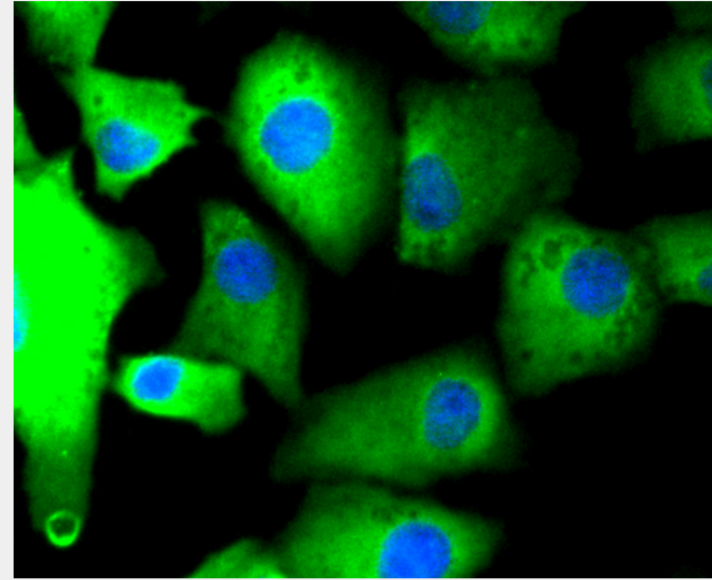
Immunohistochemistry of paraffin-embedded mouse intestine using PRKCA antibody at dilution of 1:100 (40x lens).



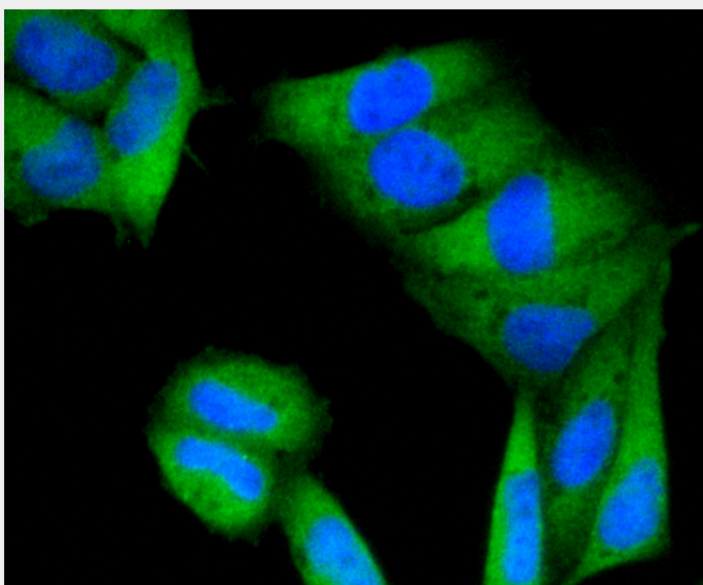
Immunohistochemistry of paraffin-embedded mouse heart using PRKCA antibody at dilution of 1:100 (40x lens).



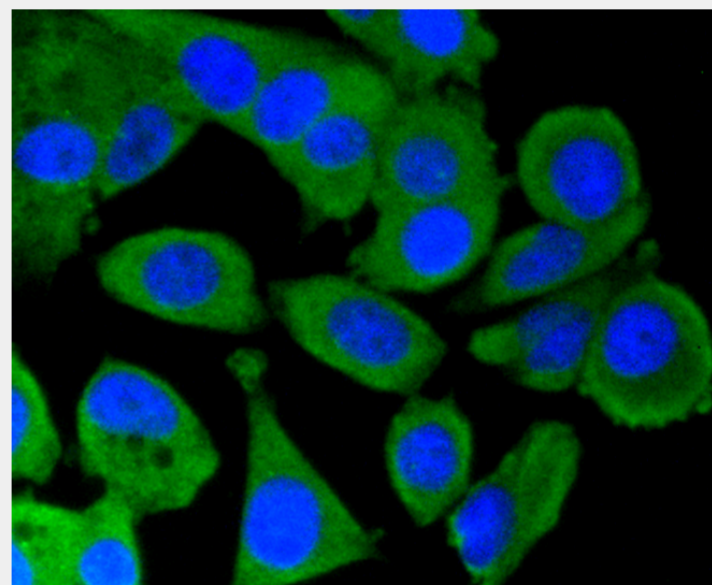
Immunofluorescence analysis of CRC cells using PRKCA antibody.



Immunofluorescence analysis of A549 cells using PRKCA antibody.



Immunofluorescence analysis of HeLa cells using PRKCA antibody.



Immunofluorescence analysis of MCF-7 cells using PRKCA antibody.

All products are for RESEARCH USE ONLY. Not for diagnostic & therapeutic purposes!