

PIM1 Monoclonal Antibody

Catalog No: tcba1519



Available Sizes

Size: 50ul

Size: 100ul

Size: 200ul



Specifications

Application:

WB,IHC,IF

Research Area:

Cancer,Stem cells,Apoptosis,Chromatin Remodeling,Epigenetics,

Species Reactivity:

Human,Mouse

Host Species:

Rabbit

Isotype:

IgG

Form:

Liquid

Storage Buffer:

Buffer: PBS with 0.02% sodium azide, 50% glycerol, pH7.3.

Recommended Dilution:

WB 1:5000 - 1:10000

IHC 1:50 - 1:200

IF 1:50 - 1:200

Storage Instruction:

Store at -20°C. Avoid freeze / thaw cycles.

Alternative Names:

PIM

SwissProt:

P11309

Gene ID:

5292 (human);

Calculated Molecular Weight:

35kDa/45kDa

Purification:

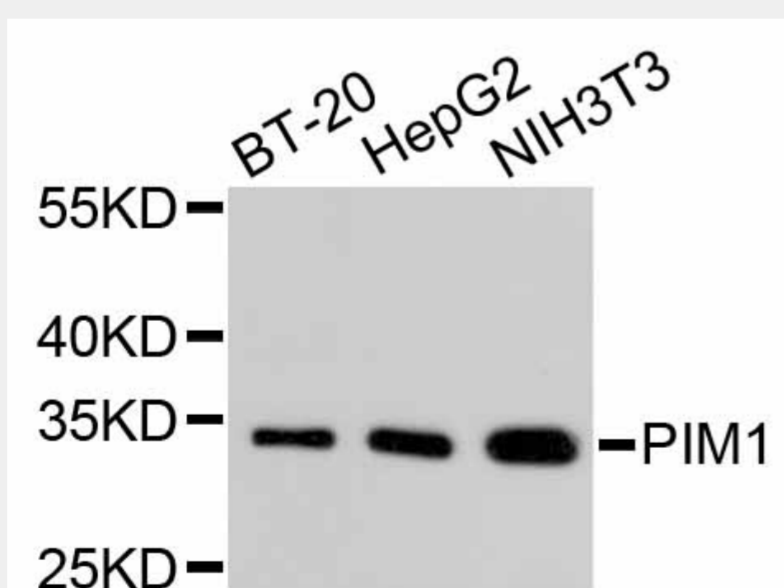
Affinity purification

Cellular Location:

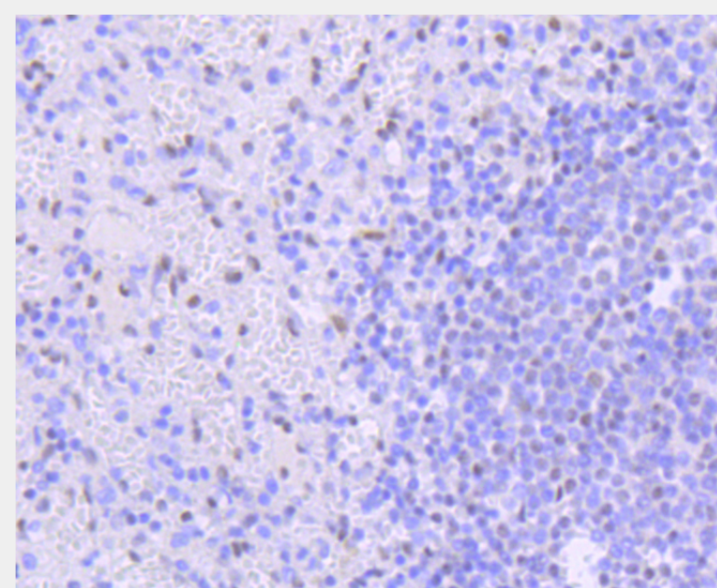
Cell membrane,Cytoplasm,Nucleus,

Product Description

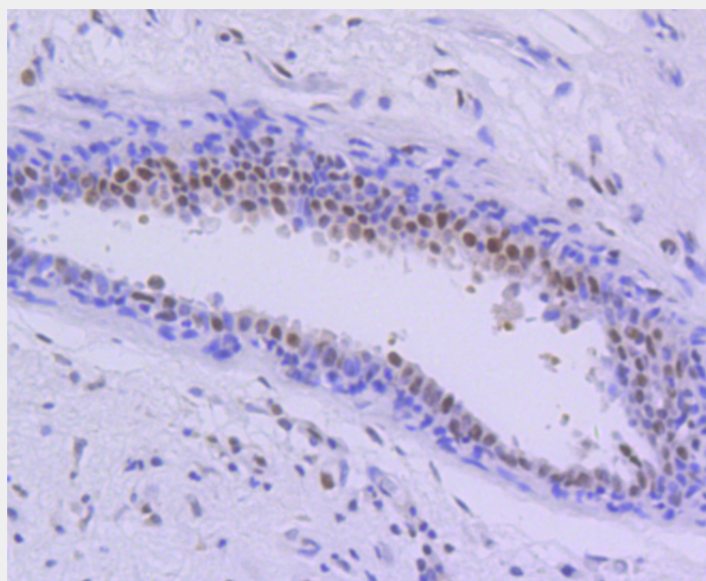
The protein encoded by this gene belongs to the Ser/Thr protein kinase family, and PIM subfamily. This gene is expressed primarily in B-lymphoid and myeloid cell lines, and is overexpressed in hematopoietic malignancies and in prostate cancer. It plays a role in signal transduction in blood cells, contributing to both cell proliferation and survival, and thus provides a selective advantage in tumorigenesis. Both the human and orthologous mouse genes have been reported to encode two isoforms (with preferential cellular localization) resulting from the use of alternative in-frame translation initiation codons, the upstream non-AUG (CUG) and downstream AUG codons (PMIDs:16186805, 1825810).



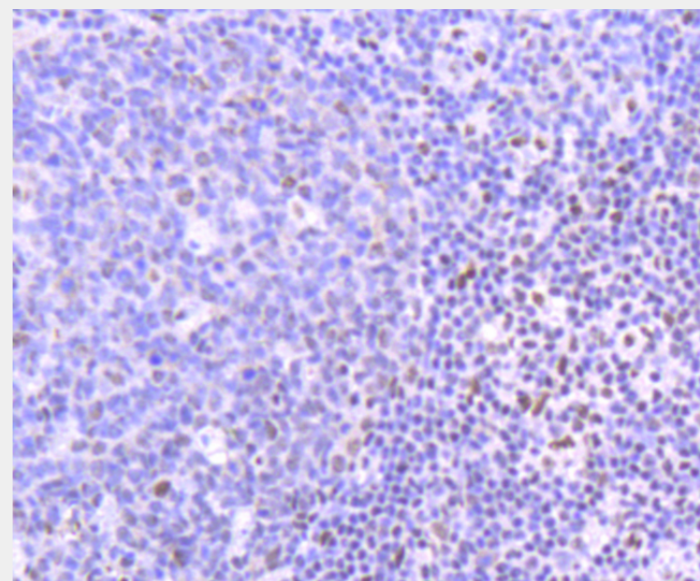
Western blot analysis of extracts of various cell lines, using PIM1 antibody.
Secondary antibody: HRP Goat Anti-Rabbit IgG (H+L) at 1:10000 dilution.
Lysates/proteins: 25ug per lane.
Blocking buffer: 3% nonfat dry milk in TBST.



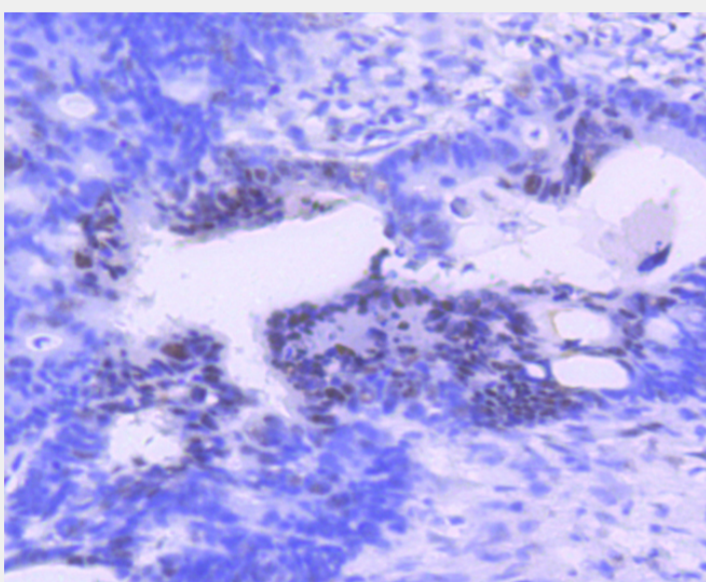
Immunohistochemistry of paraffin-embedded human spleen using PIM1 antibody at dilution of 1:100 (40x lens).



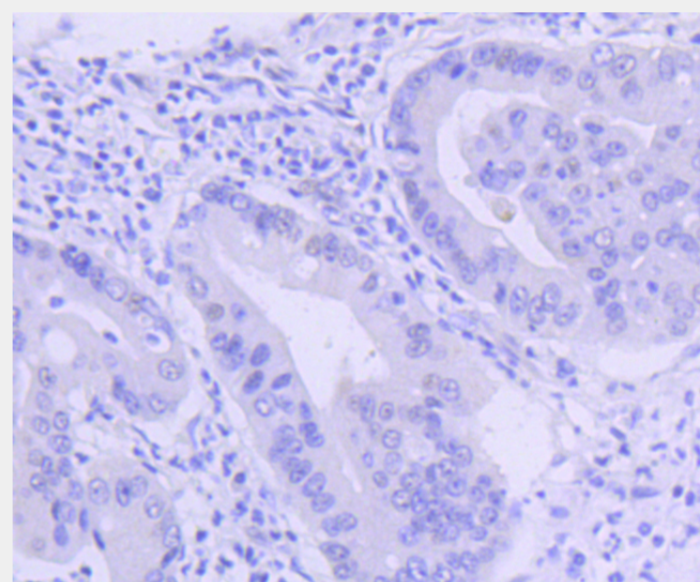
Immunohistochemistry of paraffin-embedded human mammary cancer using PIM1 antibody at dilution of 1:100 (40x lens).



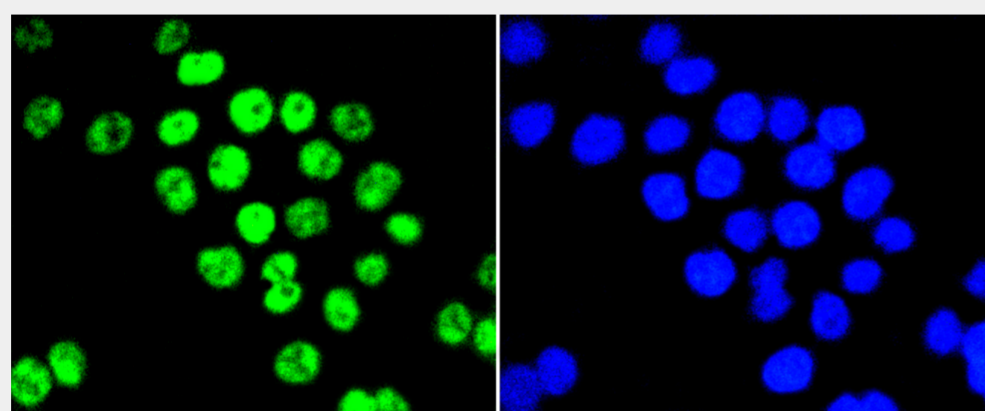
Immunohistochemistry of paraffin-embedded human tonsil using PIM1 antibody at dilution of 1:100 (40x lens).



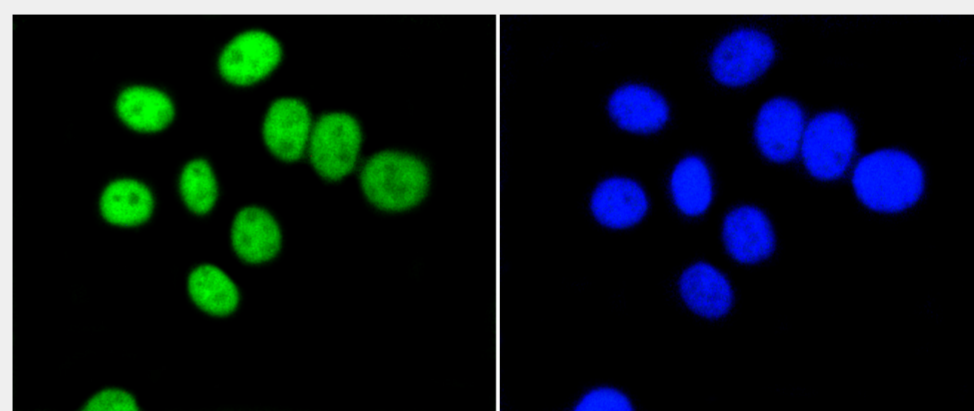
Immunohistochemistry of paraffin-embedded human colon carcinoma using PIM1 antibody at dilution of 1:100 (40x lens).



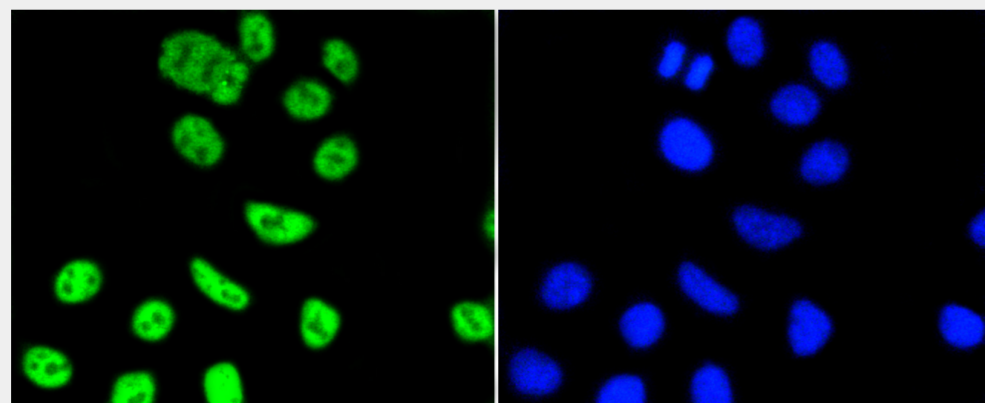
Immunohistochemistry of paraffin-embedded human gastric cancer using PIM1 antibody at dilution of 1:100 (40x lens).



Immunofluorescence analysis of SW480 cells using PIM1 antibody.



Immunofluorescence analysis of BT-20 cells using PIM1 antibody.



Immunofluorescence analysis of HepG2 cells using PIM1 antibody.

All products are for RESEARCH USE ONLY. Not for diagnostic & therapeutic purposes!