

# PHB Monoclonal Antibody

Catalog No: tcba1516



## Available Sizes

---

**Size:** 50ul

**Size:** 100ul

**Size:** 200ul



## Specifications

---

**Application:**

WB,IHC,IF,IP

**Research Area:**

Cancer,Cell cycle,Apoptosis,Cell Biology,Metabolism,

**Species Reactivity:**

Human,Mouse,Rat

**Host Species:**

Rabbit

**Isotype:**

IgG

**Form:**

Liquid

**Storage Buffer:**

Buffer: PBS with 0.02% sodium azide, 50% glycerol, pH7.3.

**Recommended Dilution:**

WB 1:500 - 1:2000

IHC 1:50 - 1:200

IF 1:50 - 1:200

IP 1:20 - 1:50

**Storage Instruction:**

Store at -20°C. Avoid freeze / thaw cycles.

**Alternative Names:**

HEL-215;HEL-S-54e;PHB1

**SwissProt:**

P35232

**Gene ID:**

5245 (human);

**Calculated Molecular Weight:**

17kDa/29kDa

**Purification:**

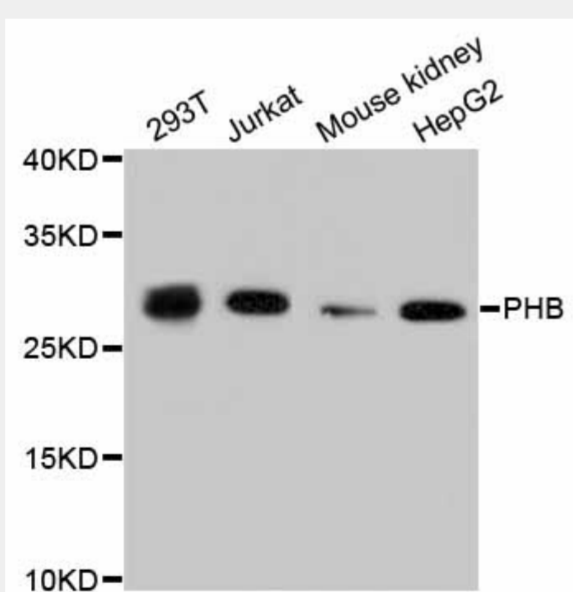
Affinity purification

**Cellular Location:**

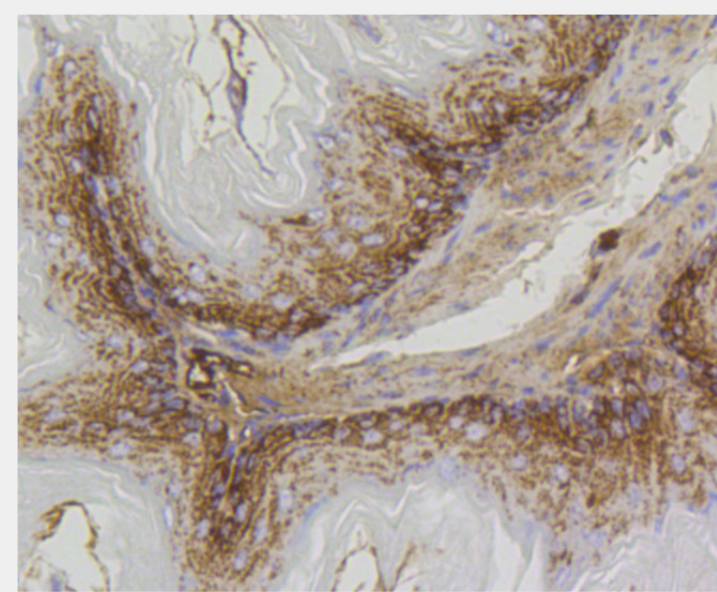
Mitochondrion inner membrane,

**Product Description**

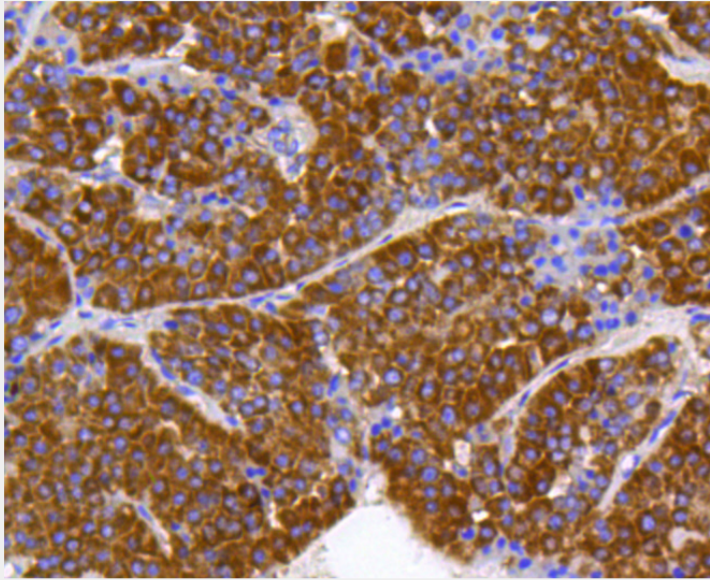
This gene is evolutionarily conserved, and its product is proposed to play a role in human cellular senescence and tumor suppression. Antiproliferative activity is reported to be localized to the 3' UTR, which is proposed to function as a trans-acting regulatory RNA. Several pseudogenes of this gene have been identified. Alternative splicing results in multiple transcript variants.



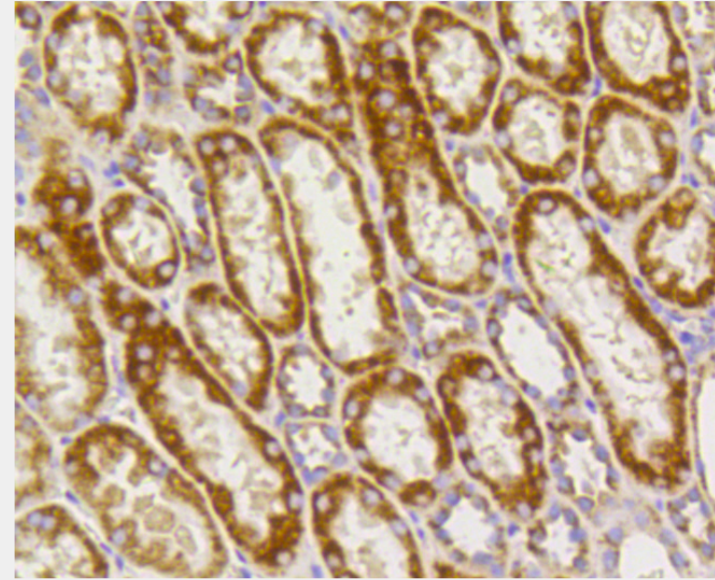
Western blot analysis of extracts of various cell lines, using PHB antibody.  
Secondary antibody: HRP Goat Anti-Rabbit IgG (H+L) at 1:10000 dilution.  
Lysates/proteins: 25ug per lane.  
Blocking buffer: 3% nonfat dry milk in TBST.



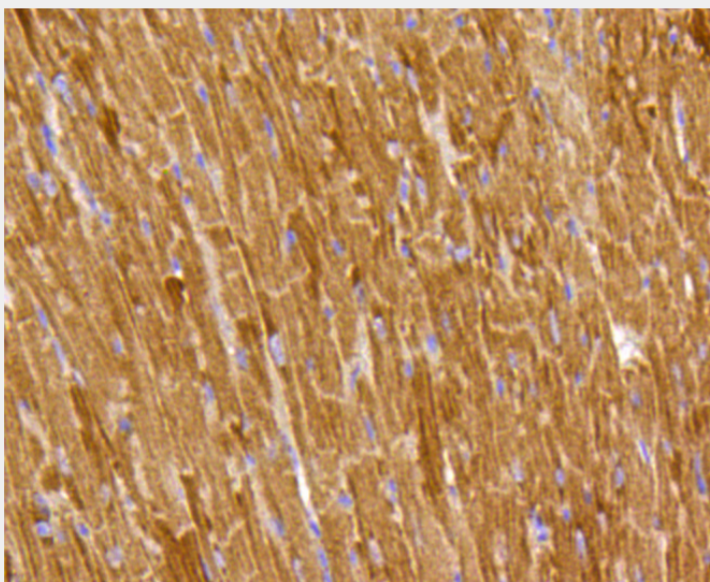
Immunohistochemistry of paraffin-embedded mouse stomach using PHB antibody at dilution of 1:100 (40x lens).



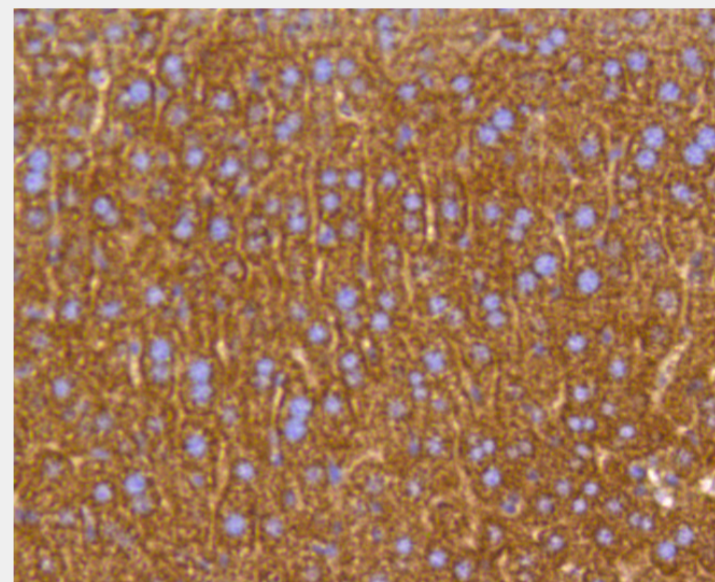
Immunohistochemistry of paraffin-embedded human liver cancer using PHB antibody at dilution of 1:100 (40x lens).



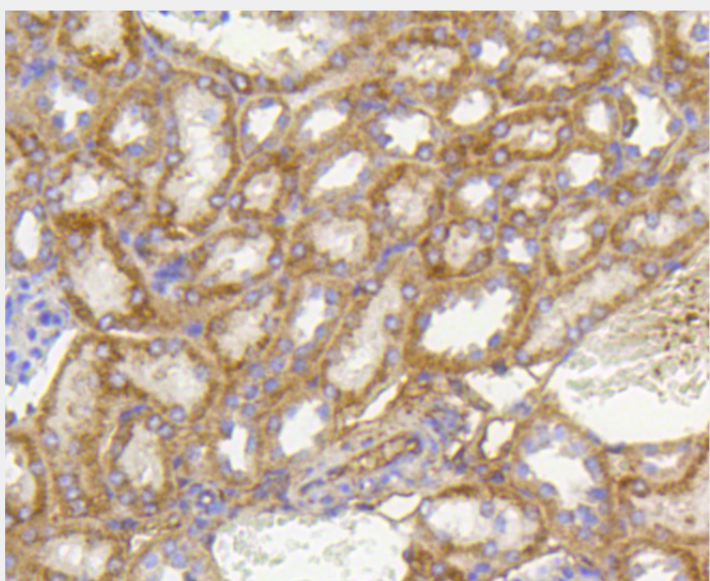
Immunohistochemistry of paraffin-embedded human kidney using PHB antibody at dilution of 1:100 (40x lens).



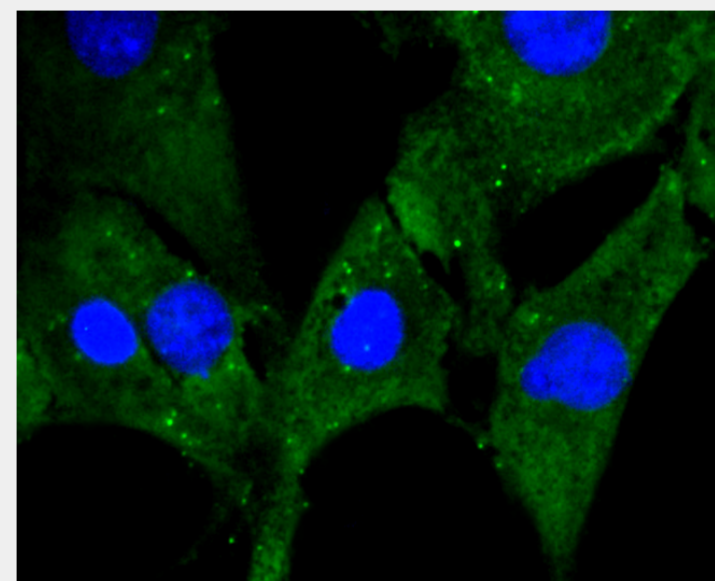
Immunohistochemistry of paraffin-embedded mouse heart using PHB antibody at dilution of 1:100 (40x lens).



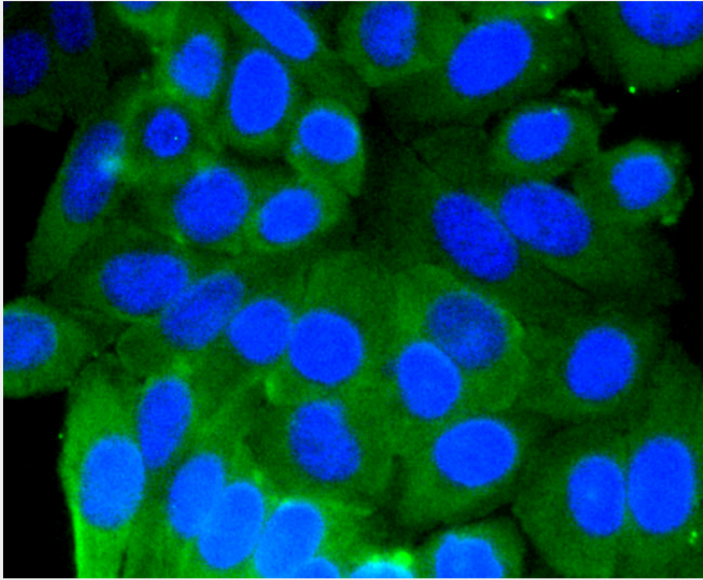
Immunohistochemistry of paraffin-embedded mouse liver using PHB antibody at dilution of 1:100 (40x lens).



Immunohistochemistry of paraffin-embedded mouse kidney using PHB antibody at dilution of 1:100 (40x lens).



Immunofluorescence analysis of NIH-3T3 cells using PHB antibody.



Immunofluorescence analysis of HepG2 cells using PHB antibody.

All products are for RESEARCH USE ONLY. Not for diagnostic & therapeutic purposes!