

CTGF Polyclonal Antibody

Catalog No: tcba1513



Available Sizes

Size: 50ul

Size: 100ul

Size: 200ul



Specifications

Application:

WB,IHC,IF

Research Area:

Cardiovascular,Immunology,

Species Reactivity:

Human,Mouse,Rat

Host Species:

Rabbit

Isotype:

IgG

Form:

Liquid

Storage Buffer:

Buffer: PBS with 0.02% sodium azide, 50% glycerol, pH7.3.

Recommended Dilution:

WB 1:200 - 1:500

IHC 1:50 - 1:200

IF 1:20 - 1:50

Storage Instruction:

Store at -20°C. Avoid freeze / thaw cycles.

Alternative Names:

CCN2;HCS24;IGFBP8;NOV2

SwissProt:

P29279

Gene ID:

1490 (human);

Calculated Molecular Weight:

35kDa/38kDa

Purification:

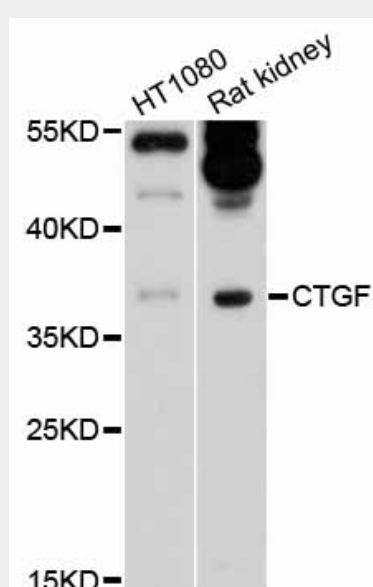
Affinity purification

Cellular Location:

Secreted,extracellular matrix,extracellular space,

Product Description

The protein encoded by this gene is a mitogen that is secreted by vascular endothelial cells. The encoded protein plays a role in chondrocyte proliferation and differentiation, cell adhesion in many cell types, and is related to platelet-derived growth factor. Certain polymorphisms in this gene have been linked with a higher incidence of systemic sclerosis.



Western blot analysis of extracts of various cell lines, using CTGF antibody at 1:1000 dilution.

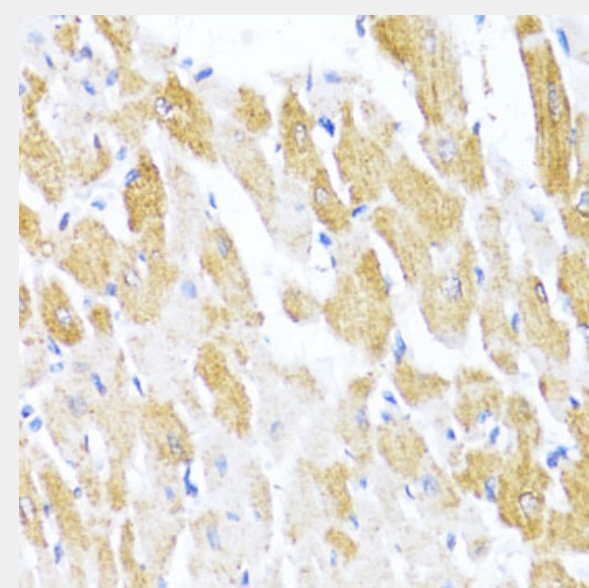
Secondary antibody: HRP Goat Anti-Rabbit IgG (H+L) at 1:10000 dilution.

Lysates/proteins: 25ug per lane.

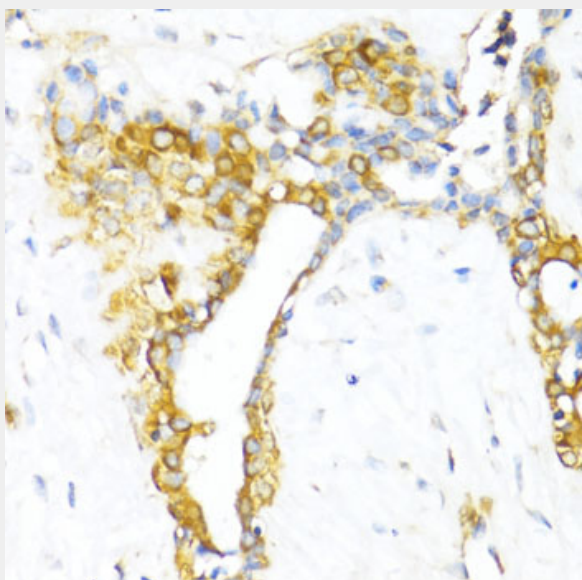
Blocking buffer: 3% nonfat dry milk in TBST.

Detection: ECL Enhanced Kit.

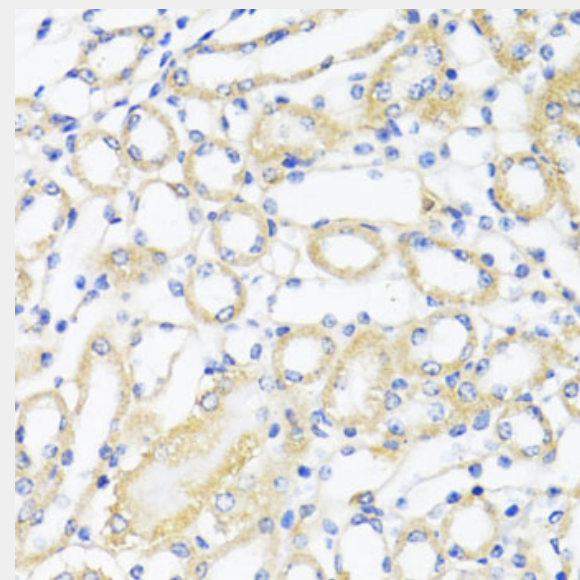
Exposure time: 30s.



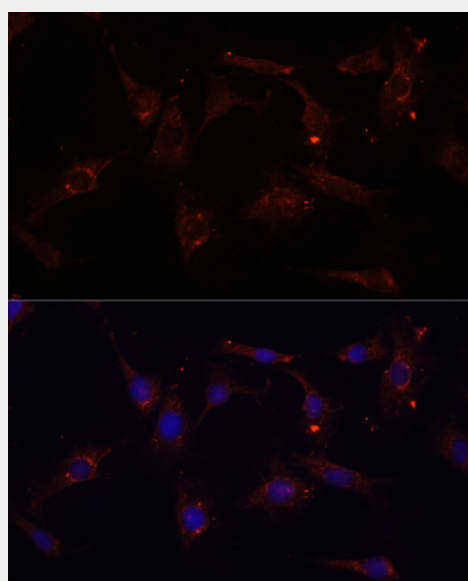
Immunohistochemistry of paraffin-embedded rat heart using CTGF antibody at dilution of 1:100 (40x lens).



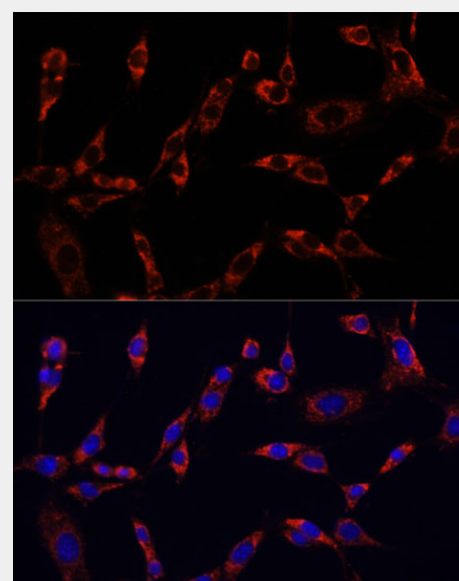
Immunohistochemistry of paraffin-embedded human breast using CTGF antibody at dilution of 1:100 (40x lens).



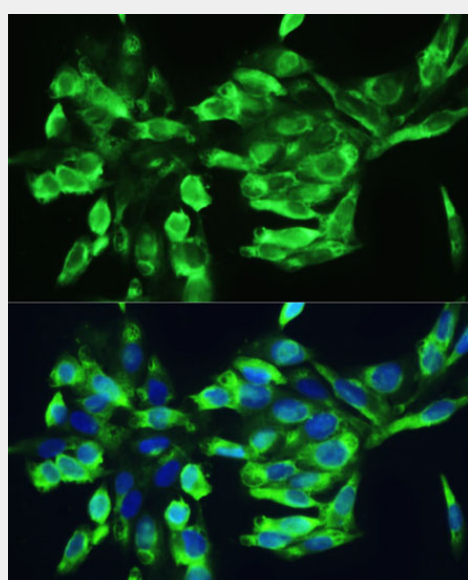
Immunohistochemistry of paraffin-embedded mouse kidney using CTGF antibody at dilution of 1:100 (40x lens).



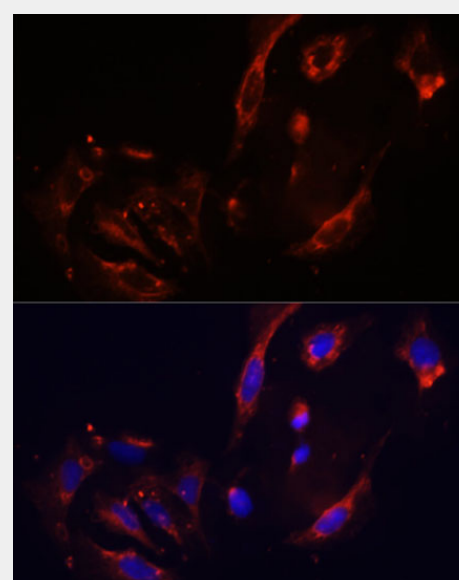
Immunofluorescence analysis of C6 cells using CTGF antibody at dilution of 1:100. Blue: DAPI for nuclear staining.



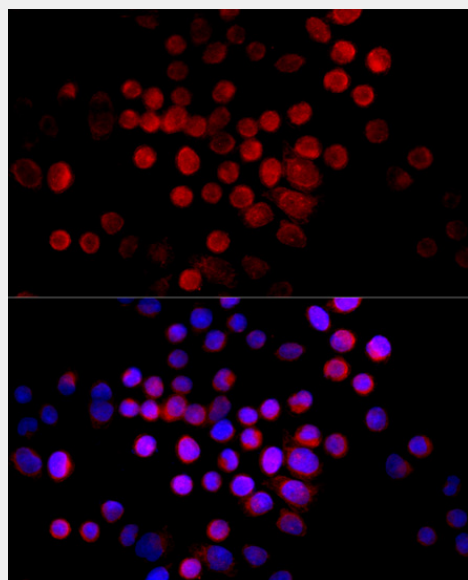
Immunofluorescence analysis of NIH/3T3 cells using CTGF antibody at dilution of 1:100. Blue: DAPI for nuclear staining.



Immunofluorescence analysis of U2OS cells using CTGF antibody at dilution of 1:100. Blue: DAPI for nuclear staining.



Immunofluorescence analysis of U2OS cells using CTGF antibody at dilution of 1:100. Blue: DAPI for nuclear staining.



Immunofluorescence analysis of HeLa cells using CTGF antibody at dilution of 1:100 (40x lens). Blue: DAPI for nuclear staining.

All products are for RESEARCH USE ONLY. Not for diagnostic & therapeutic purposes!