

HK1 Rabbit Monoclonal Antibody

Catalog No: tcba1414

KO VALIDATED



Available Sizes

Size: 50ul

Size: 100ul

Size: 200μl



Specifications

Research Area:

Cancer, Cardiovascular, Metabolism,

Species Reactivity:

Human, Mouse, Rat

Host Species:

Rabbit

Immunogen / Amino acids:

A synthesized peptide derived from human Hexokinase 1

Isotype:

IgG

Form:

Liquid

Storage Buffer:

Buffer: PBS with 0.02% sodium azide, 50% glycerol, pH7.3.

Recommended Dilution:

WB 1:500 - 1:2000

IHC 1:50 - 1:200

IF 1:50 - 1:200

Tested Application:

WB,IHC,IF

Storage Instruction:

Store at -20°C. Avoid freeze / thaw cycles.

Alternative Names:

HK; HK1-ta; HK1-tb; HK1-tc; HKD; HKI; HMSNR; HXK1; hexokinase

SwissProt:

P19367

Gene ID:

3098

Calculated Molecular Weight:

102kDa

Observed Molecular Weight:

102kDa

Purification:

Affinity purification

Positive Control:

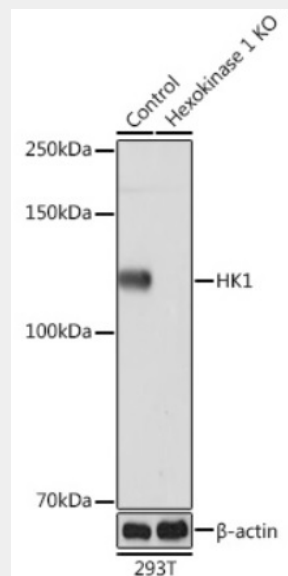
293T, MCF7, Mouse testis, Mouse brain, Rat testis, Rat brain

Cellular Location:

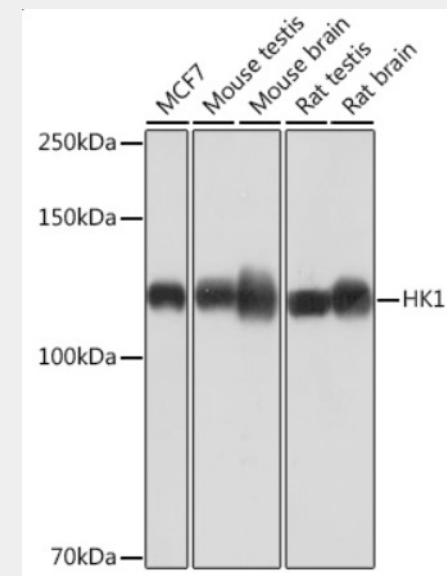
Mitochondrion outer membrane,

Product Description

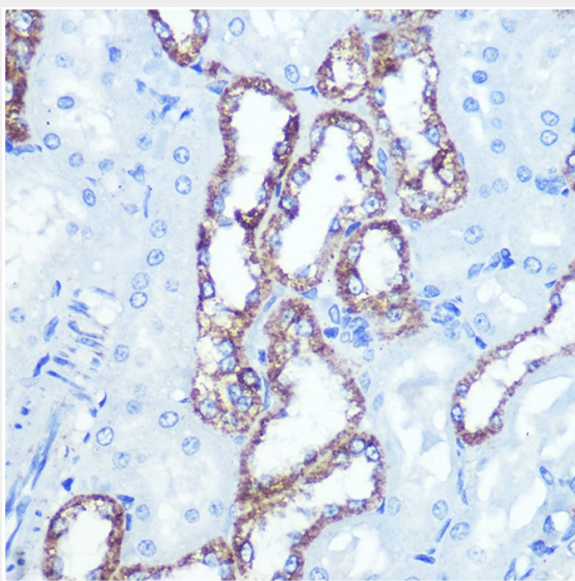
Hexokinases phosphorylate glucose to produce glucose-6-phosphate, the first step in most glucose metabolism pathways. This gene encodes a ubiquitous form of hexokinase which localizes to the outer membrane of mitochondria. Mutations in this gene have been associated with hemolytic anemia due to hexokinase deficiency. Alternative splicing of this gene results in several transcript variants which encode different isoforms, some of which are tissue-specific.



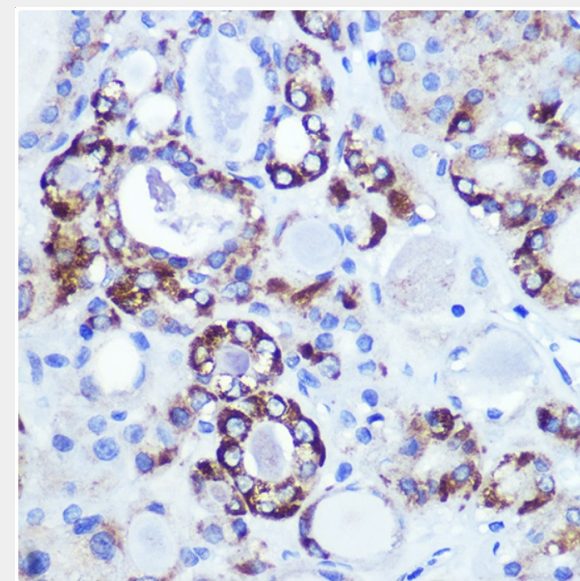
Western blot analysis of extracts of various cell lines, using HK1 antibody.
Secondary antibody: HRP Goat Anti-Rabbit IgG (H+L) at 1:10000 dilution.
Lysates/proteins: 25ug per lane.
Blocking buffer: 3% nonfat dry milk in TBST.



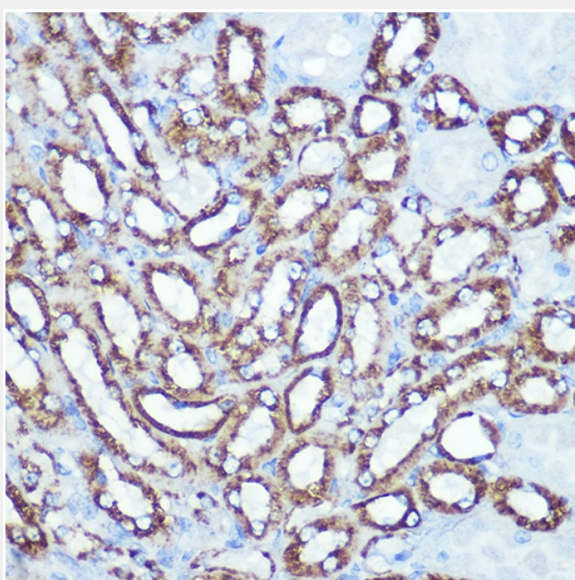
Western blot analysis of extracts of various cell lines, using HK1 antibody.
Secondary antibody: HRP Goat Anti-Rabbit IgG (H+L) at 1:10000 dilution.
Lysates/proteins: 25ug per lane.
Blocking buffer: 3% nonfat dry milk in TBST.



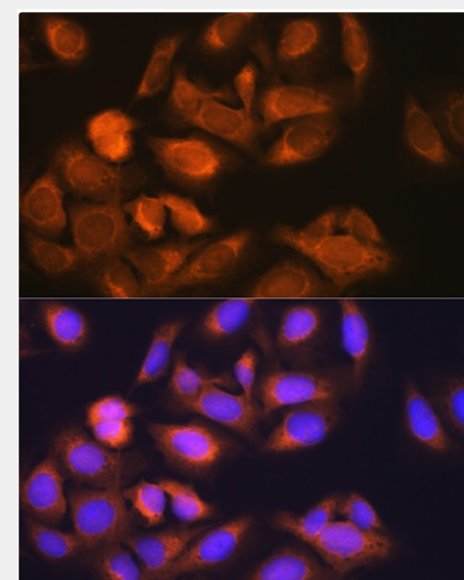
Immunohistochemistry of paraffin-embedded rat kidney using HK1 Rabbit Monoclonal Ab at dilution of 1:100 (40x lens).



Immunohistochemistry of paraffin-embedded human thyroid cancer using HK1 Rabbit Monoclonal Ab at dilution of 1:100 (40x lens).



Immunohistochemistry of paraffin-embedded mouse kidney using HK1 Rabbit Monoclonal Ab at dilution of 1:100 (40x lens).



Immunofluorescence analysis of U-2 OS cells using HK1 Rabbit Monoclonal Ab at dilution of 1:100 (40x lens). Blue: DAPI for nuclear staining.

All products are for RESEARCH USE ONLY. Not for diagnostic & therapeutic purposes!