

CNN1 Monoclonal Antibody

Catalog No: tcba1367



Available Sizes

Size: 50ul

Size: 100ul

Size: 200ul



Specifications

Application:

WB,IHC,IF

Research Area:

Stem cells,Cardiovascular,

Species Reactivity:

Human,Mouse,Rat,Dog,Pig

Host Species:

Rabbit

Isotype:

IgG

Form:

Liquid

Storage Buffer:

Buffer: PBS with 0.02% sodium azide, 50% glycerol, pH7.3.

Recommended Dilution:

WB 1:500 - 1:2000

IHC 1:50 - 1:200

IF 1:50 - 1:200

Storage Instruction:

Store at -20°C. Avoid freeze / thaw cycles.

Alternative Names:

HEL-S-14;Sm-Calp;SMCC

SwissProt:

P51911

Gene ID:

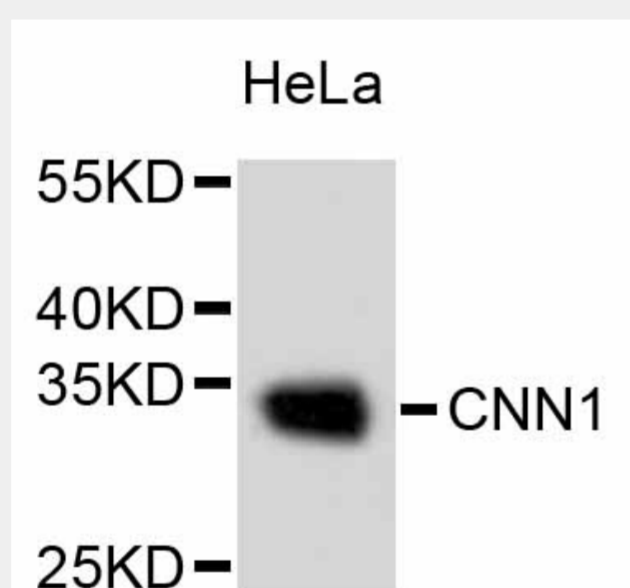
1264 (human);

Calculated Molecular Weight:

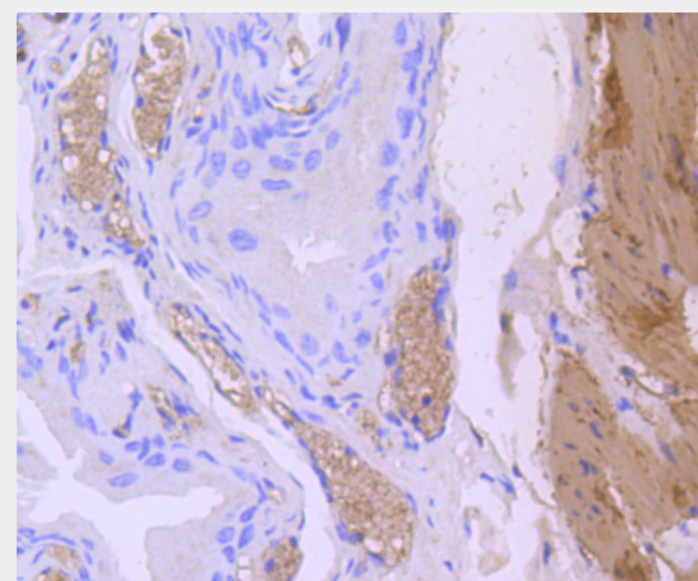
31kDa/33kDa

Purification:

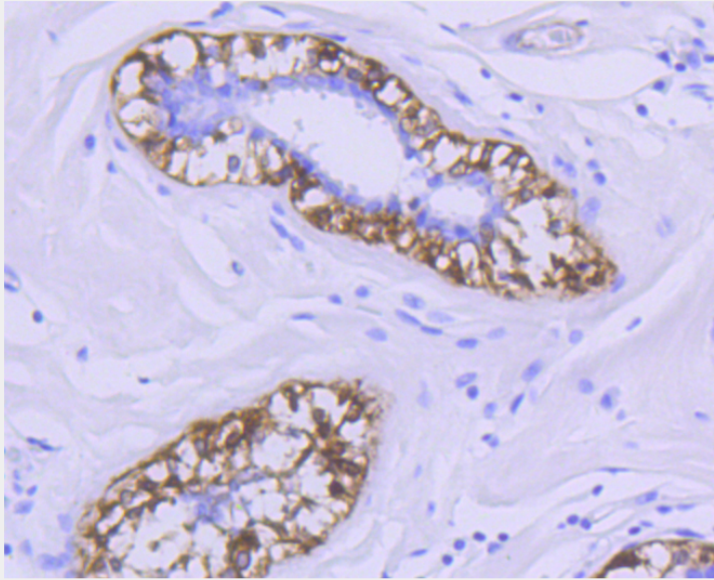
Affinity purification



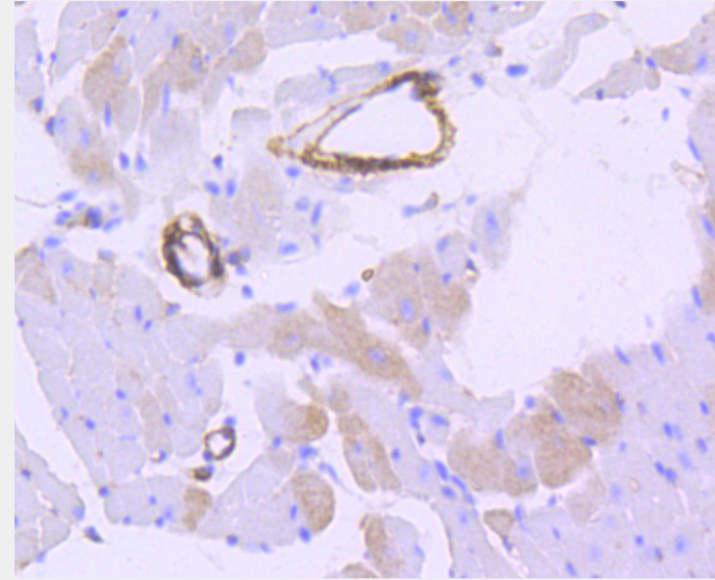
Western blot analysis of extracts of HeLa cells, using CNN1 antibody.
Secondary antibody: HRP Goat Anti-Rabbit IgG (H+L) at 1:10000 dilution.
Lysates/proteins: 25ug per lane.
Blocking buffer: 3% nonfat dry milk in TBST.



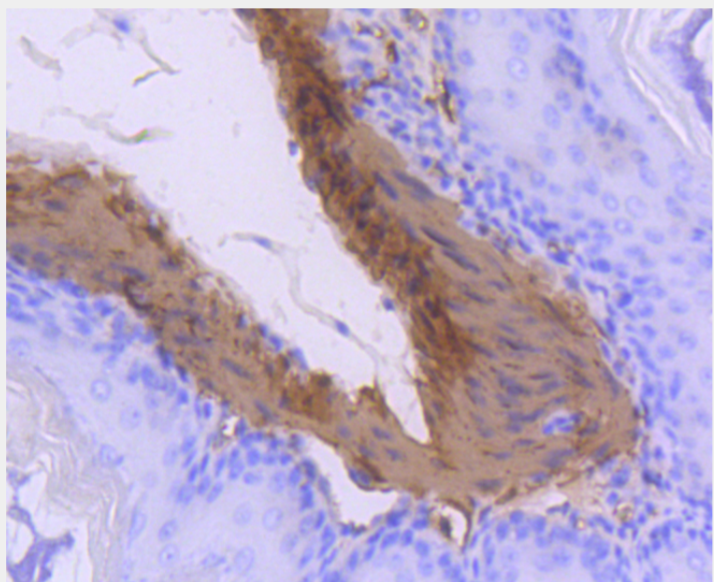
Immunohistochemistry of paraffin-embedded mouse bladder using CNN1 antibody at dilution of 1:100 (40x lens).



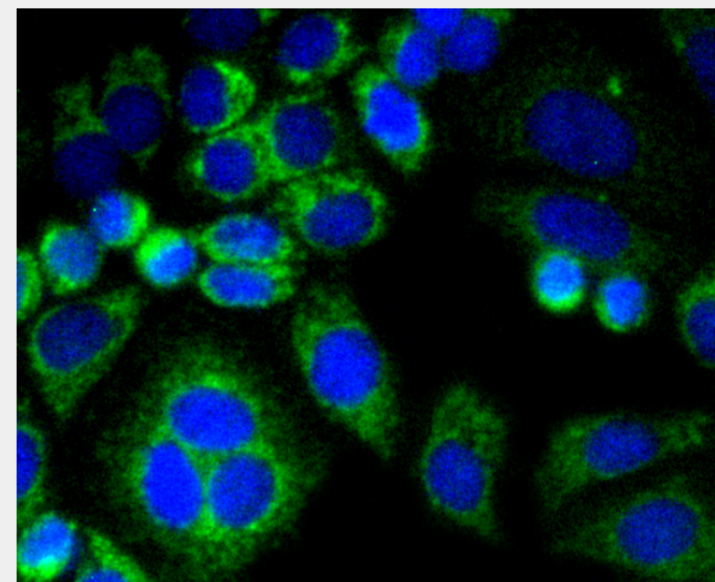
Immunohistochemistry of paraffin-embedded human breast using CNN1 antibody at dilution of 1:100 (40x lens).



Immunohistochemistry of paraffin-embedded mouse heart using CNN1 antibody at dilution of 1:100 (40x lens).



Immunohistochemistry of paraffin-embedded mouse stomach using CNN1 antibody at dilution of 1:100 (40x lens).



Immunofluorescence analysis of HepG2 cells using CNN1 antibody.

All products are for RESEARCH USE ONLY. Not for diagnostic & therapeutic purposes!