

ARRB1 Monoclonal Antibody

Catalog No: tcba1312



Available Sizes

Size: 50ul

Size: 100ul

Size: 200ul



Specifications

Application:

WB,IHC,IF

Research Area:

Neuroscience,Developmental Biology,Hedgehog pathway,Neurodegeneration,

Species Reactivity:

Human,Mouse,Rat

Host Species:

Rabbit

Isotype:

IgG

Form:

Liquid

Storage Buffer:

Buffer: PBS with 0.02% sodium azide, 50% glycerol, pH7.3.

Recommended Dilution:

WB 1:500 - 1:1000

IHC 1:50 - 1:200

IF 1:50 - 1:200

Storage Instruction:

Store at -20°C. Avoid freeze / thaw cycles.

Alternative Names:

ARB1;ARR1

SwissProt:

P49407

Gene ID:

408 (human);

Calculated Molecular Weight:

46kDa/47kDa

Purification:

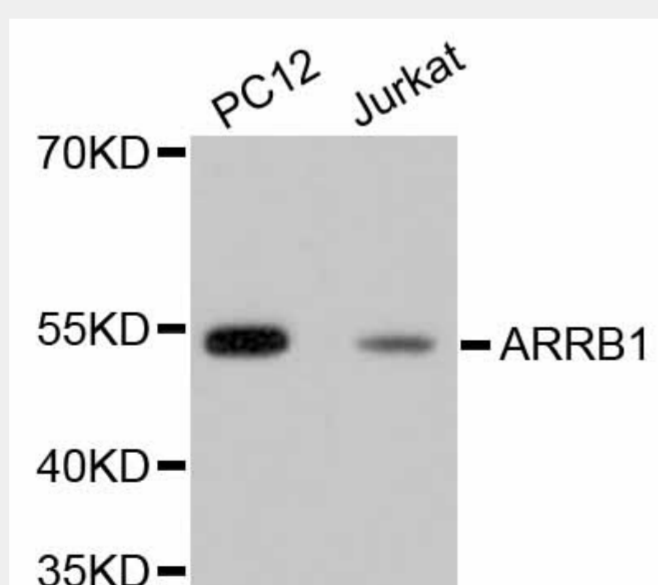
Affinity purification

Cellular Location:

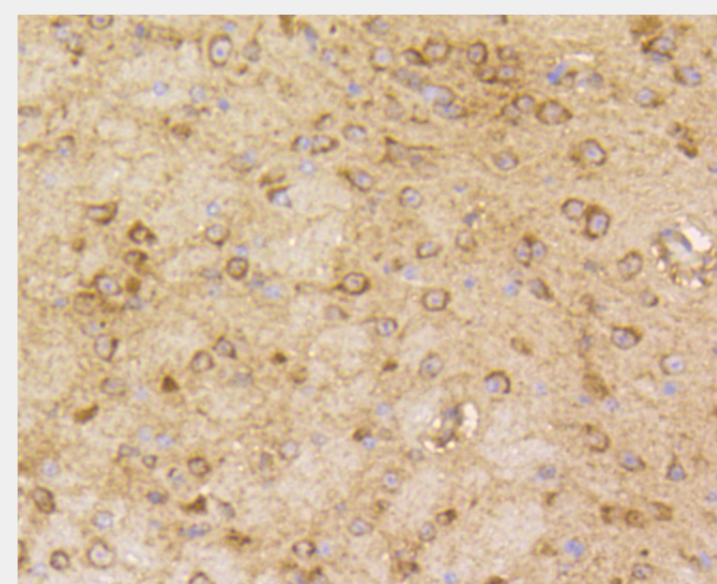
Cell membrane,Cell projection,Cytoplasm,Cytoplasmic vesicle,Membrane,Nucleus,clathrin-coated pit,pseudopodium,

Product Description

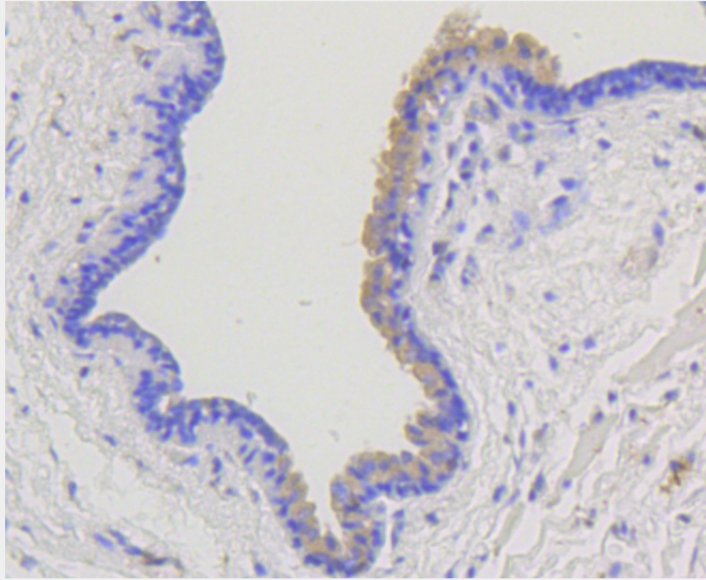
Members of arrestin/beta-arrestin protein family are thought to participate in agonist-mediated desensitization of G-protein-coupled receptors and cause specific dampening of cellular responses to stimuli such as hormones, neurotransmitters, or sensory signals. Arrestin beta 1 is a cytosolic protein and acts as a cofactor in the beta-adrenergic receptor kinase (BARK) mediated desensitization of beta-adrenergic receptors. Besides the central nervous system, it is expressed at high levels in peripheral blood leukocytes, and thus the BARK/beta-arrestin system is believed to play a major role in regulating receptor-mediated immune functions. Alternatively spliced transcripts encoding different isoforms of arrestin beta 1 have been described.



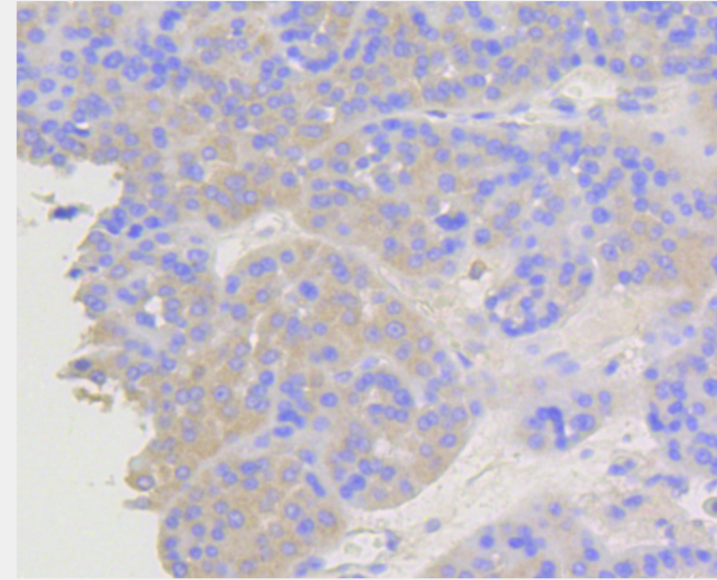
Western blot analysis of extracts of various cell lines, using ARRB1 antibody.
Secondary antibody: HRP Goat Anti-Rabbit IgG (H+L) at 1:10000 dilution.
Lysates/proteins: 25ug per lane.
Blocking buffer: 3% nonfat dry milk in TBST.



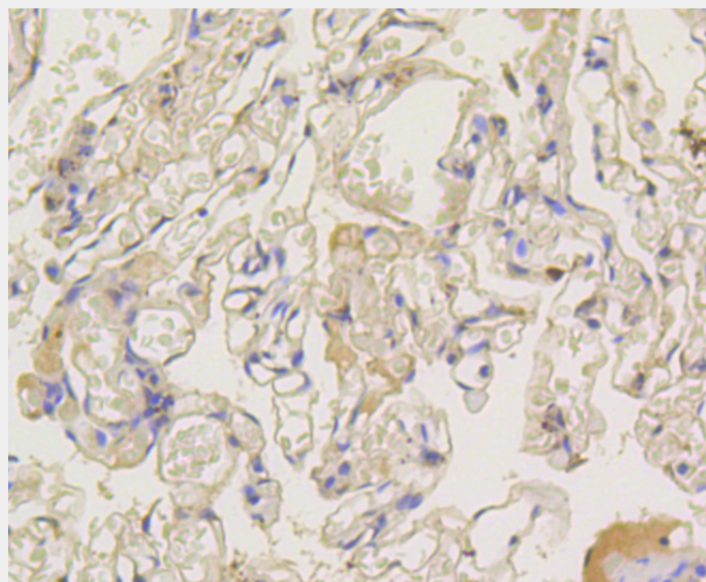
Immunohistochemistry of paraffin-embedded mouse brain using ARRB1 antibody at dilution of 1:100 (40x lens).



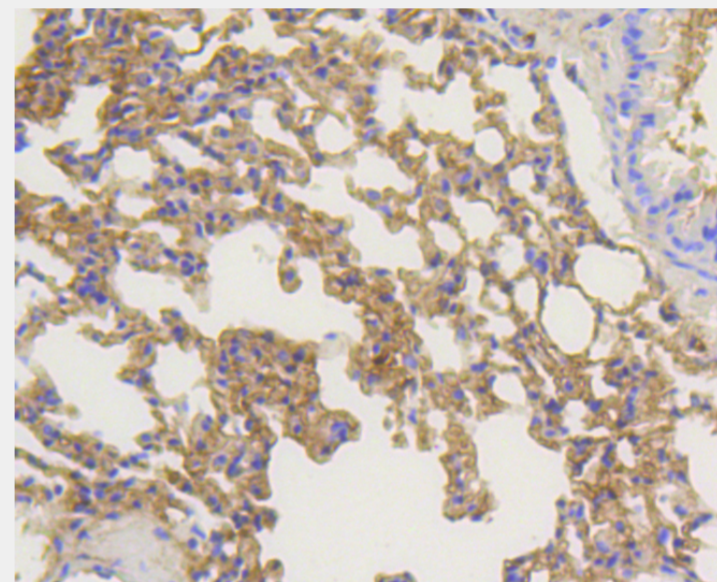
Immunohistochemistry of paraffin-embedded human mammary cancer using ARRB1 antibody at dilution of 1:100 (40x lens).



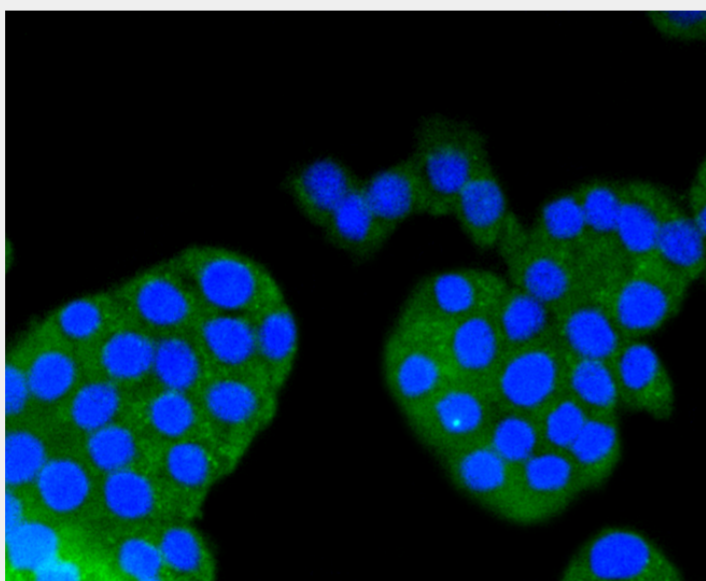
Immunohistochemistry of paraffin-embedded human liver cancer using ARRB1 antibody at dilution of 1:100 (40x lens).



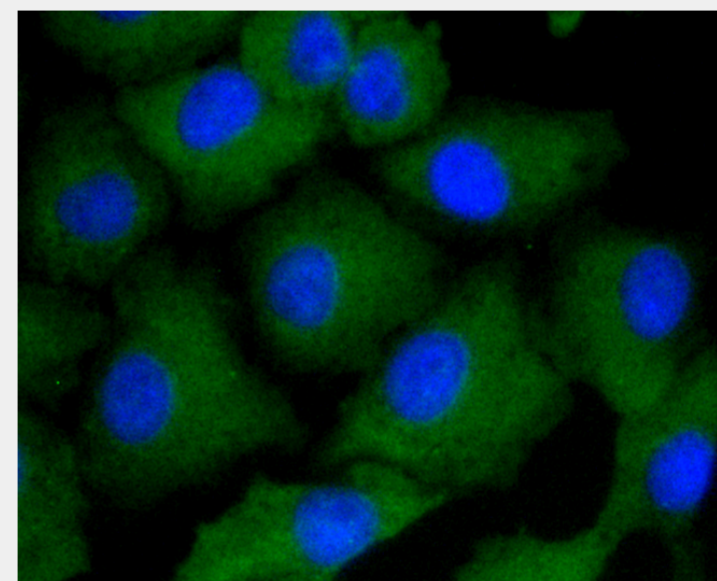
Immunohistochemistry of paraffin-embedded human lung using ARRB1 antibody at dilution of 1:100 (40x lens).



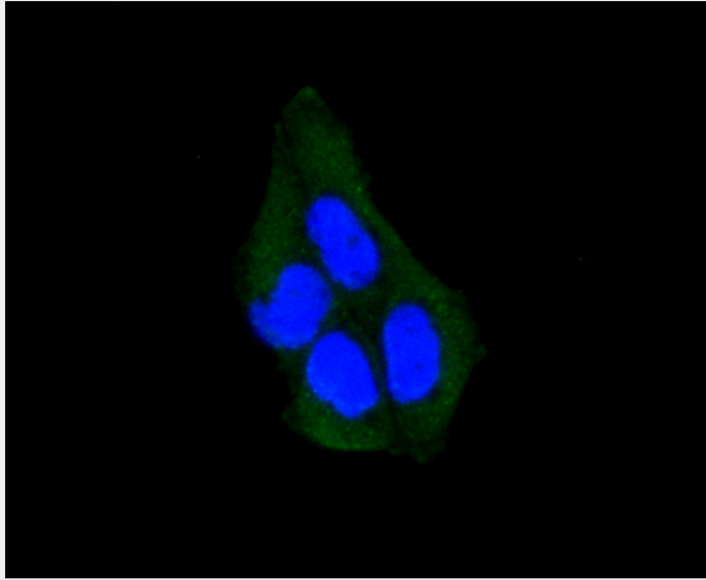
Immunohistochemistry of paraffin-embedded mouse lung using ARRB1 antibody at dilution of 1:100 (40x lens).



Immunofluorescence analysis of PC-12 cells using ARRB1 antibody.



Immunofluorescence analysis of A549 cells using ARRB1 antibody.



Immunofluorescence analysis of HeLa cells using ARRB1 antibody.

All products are for RESEARCH USE ONLY. Not for diagnostic & therapeutic purposes!