

# Polyclonal Antibody to Glutathione S Transferase Pi (GSTp)

Catalog No: tcua5519



## Available Sizes

---

**Size:** 20ul

**Size:** 100ul

**Size:** 200ul



## Specifications

---

**Application:**

WB; IHC; ICC; IP.

**Species Reactivity:**

Homo sapiens (Human)

**Host Species:**

Rabbit

**Conjugation:**

Unconjugated

**Clonality:**

Polyclonal

**Form:**

Liquid

**Storage Buffer:**

PBS, pH7.4, containing 0.01% SKL, 1mM DTT, 5% Trehalose and Proclin300.

**Recommended Dilution:**

Western blotting: 0.2-2µg/mL;1:250-2500

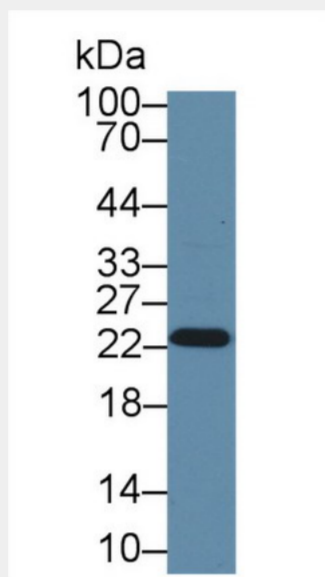
Immunohistochemistry: 5-20µg/mL;1:25-100

Immunocytochemistry: 5-20µg/mL;1:25-100

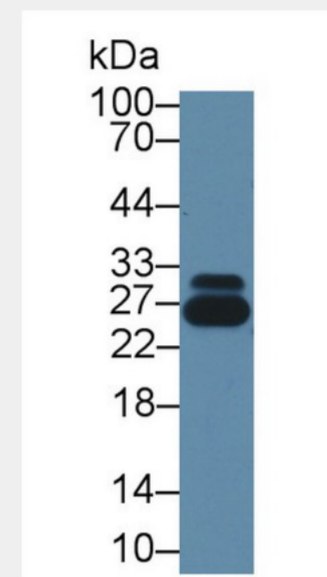
Optimal working dil

**Alternative Names:**

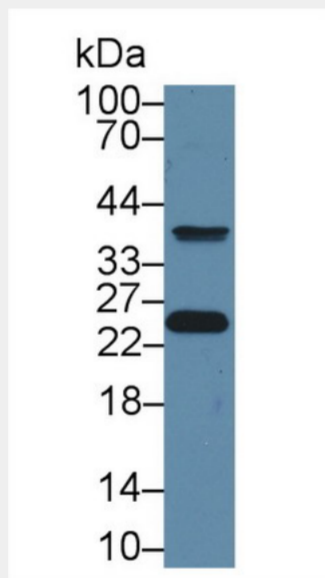
GSTP1; GST-P1; DFN7; FAEES3; GST3



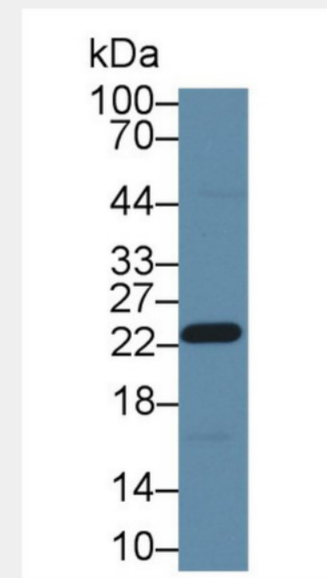
Western Blot; Sample: Human A549 cell lysate; Primary Ab: 1 $\mu$ g/ml Rabbit Anti-Human GSTp Antibody Second Ab: 0.2 $\mu$ g/mL HRP-Linked Caprine Anti-Rabbit IgG Polyclonal Antibody (Catalog: SAA544Rb19)



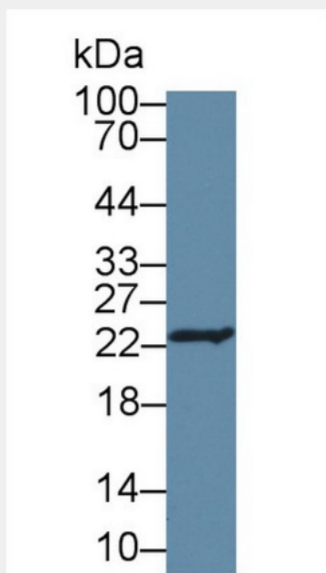
Western Blot; Sample: Human Serum; Primary Ab: 1 $\mu$ g/ml Rabbit Anti-Human GSTp Antibody Second Ab: 0.2 $\mu$ g/mL HRP-Linked Caprine Anti-Rabbit IgG Polyclonal Antibody Catalog: SAA544Rb19)



Western Blot; Sample: Human MCF7 cell lysate; Primary Ab: 1 $\mu$ g/ml Rabbit Anti-Human GSTp Antibody Second Ab: 0.2 $\mu$ g/mL HRP-Linked Caprine Anti-Rabbit IgG Polyclonal Antibody Catalog: SAA544Rb19)



Western Blot; Sample: Porcine Stomach lysate; Primary Ab: 1 $\mu$ g/ml Rabbit Anti-Human GSTp Antibody Second Ab: 0.2 $\mu$ g/mL HRP-Linked Caprine Anti-Rabbit IgG Polyclonal Antibody Catalog: SAA544Rb19)



Western Blot; Sample: Porcine Skin lysate; Primary Ab: 1 $\mu$ g/ml Rabbit Anti-Human GSTp Antibody Second Ab: 0.2 $\mu$ g/mL HRP-Linked Caprine Anti-Rabbit IgG Polyclonal Antibody Catalog: SAA544Rb19)

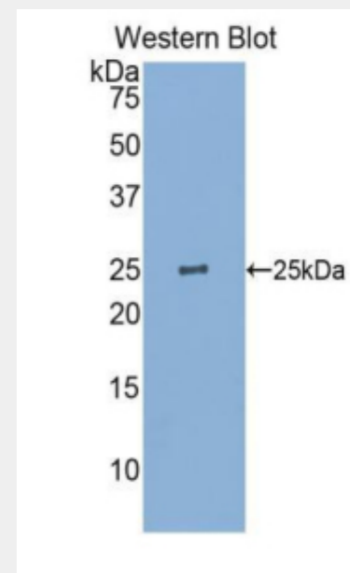


Figure. Western Blot; Sample: Recombinant protein.)

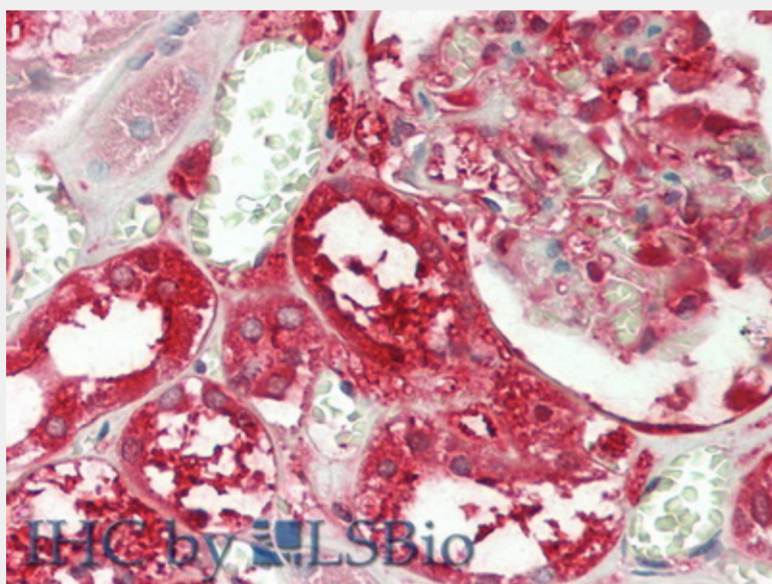


Figure. HE staining on IHC-P; Samples: Human Kidney Tissue.)

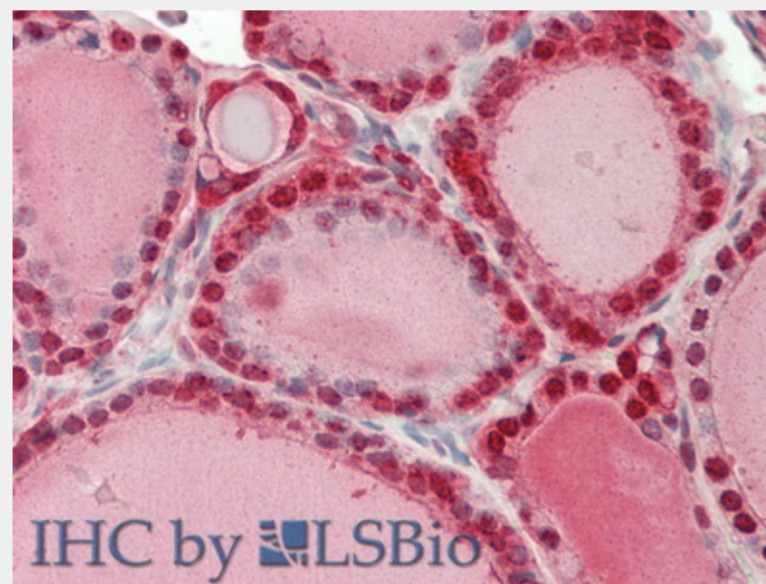
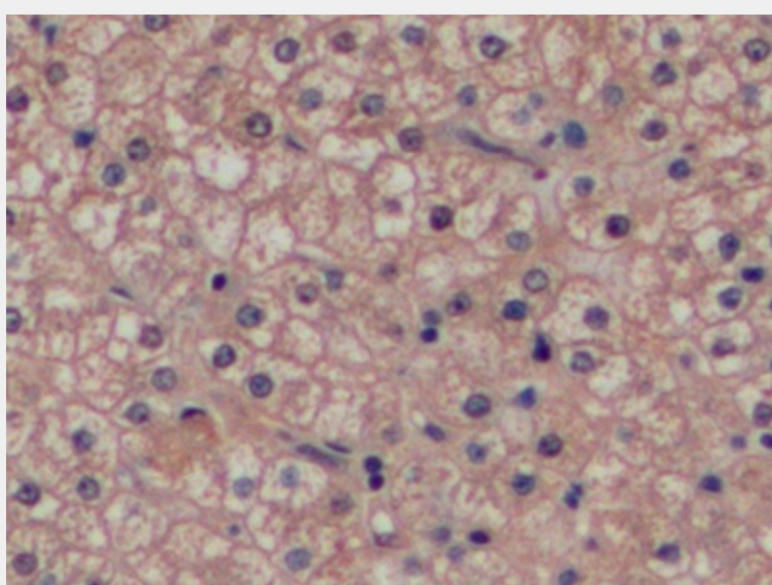


Figure. HE staining on IHC-P; Samples: Human Thyroid Tissue.)



Used in DAB staining on formalin fixed paraffin-embedded Stomach tissue)

All products are for RESEARCH USE ONLY. Not for diagnostic & therapeutic purposes!