

# SFN Polyclonal Antibody

Catalog No: tcba912



## Available Sizes

---

**Size:** 50ul

**Size:** 100ul

**Size:** 200ul



## Specifications

---

**Application:**

WB,IHC,IF

**Research Area:**

Cancer,Stem cells,Cell cycle,Wnt pathway,MAPK pathway,Neuroscience,Developmental Biology,Cell Biology,Cell Cycle,MAPK/ERK pathway,

**Species Reactivity:**

Human,Mouse,Rat

**Host Species:**

Rabbit

**Isotype:**

IgG

**Form:**

Liquid

**Storage Buffer:**

Buffer: PBS with 0.02% sodium azide, 50% glycerol, pH7.3.

**Recommended Dilution:**

WB 1:500 - 1:2000

IHC 1:50 - 1:200

IF 1:50 - 1:200

**Storage Instruction:**

Store at -20°C. Avoid freeze / thaw cycles.

**Alternative Names:**

YWHAS

**SwissProt:**

P31947

**Gene ID:**

2810 (human);

**Calculated Molecular Weight:**

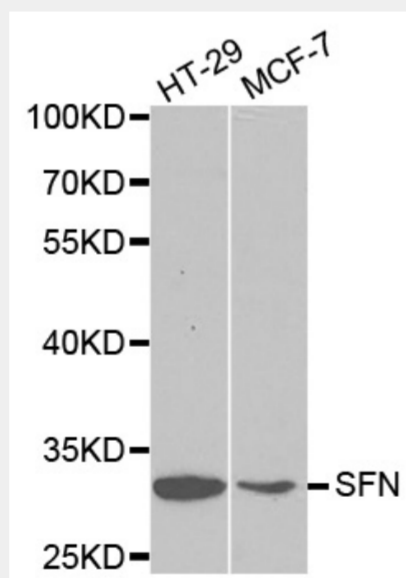
24kDa/27kDa

**Purification:**

Affinity purification

**Cellular Location:**

Cytoplasm,Nucleus,Secreted,

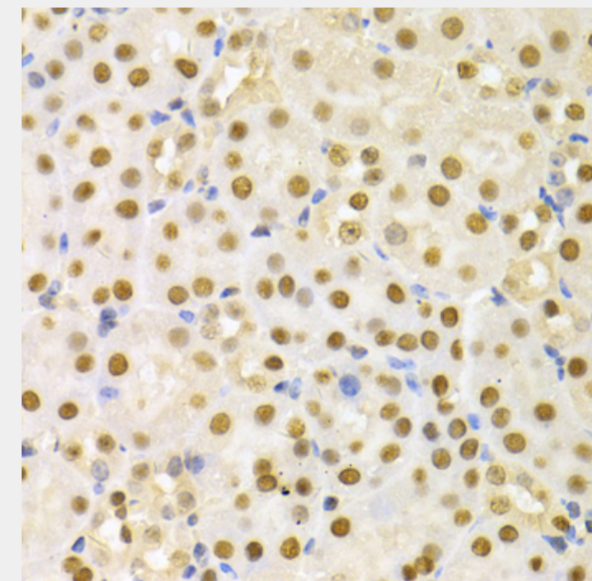


Western blot analysis of extracts of various cell lines, using SFN antibody at 1:1000 dilution.

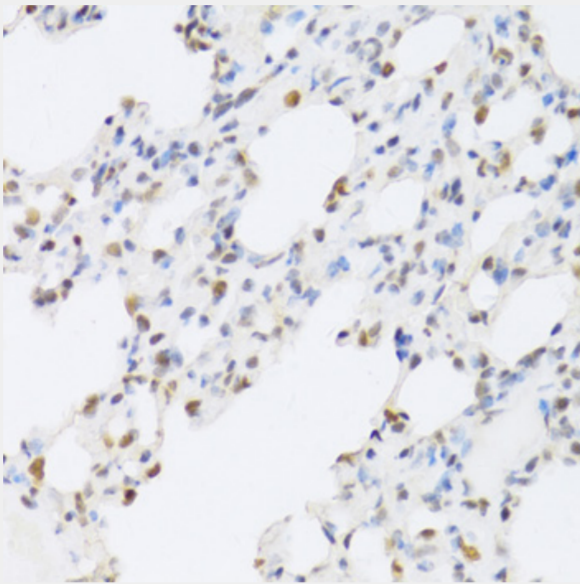
Secondary antibody: HRP Goat Anti-Rabbit IgG (H+L) at 1:10000 dilution.

Lysates/proteins: 25ug per lane.

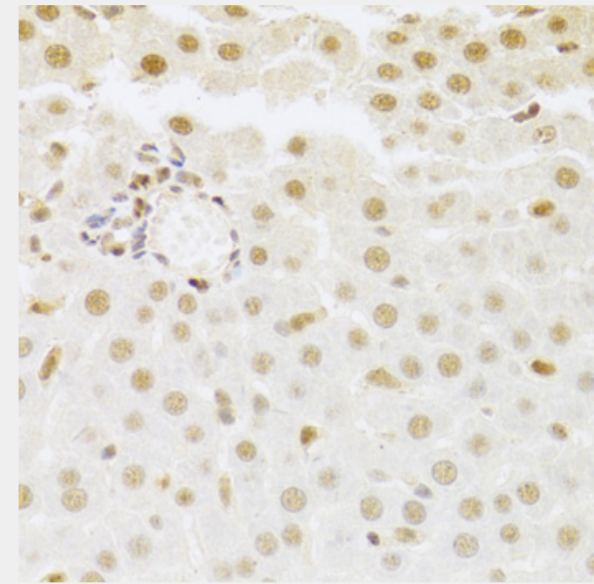
Blocking buffer: 3% nonfat dry milk in TBST.



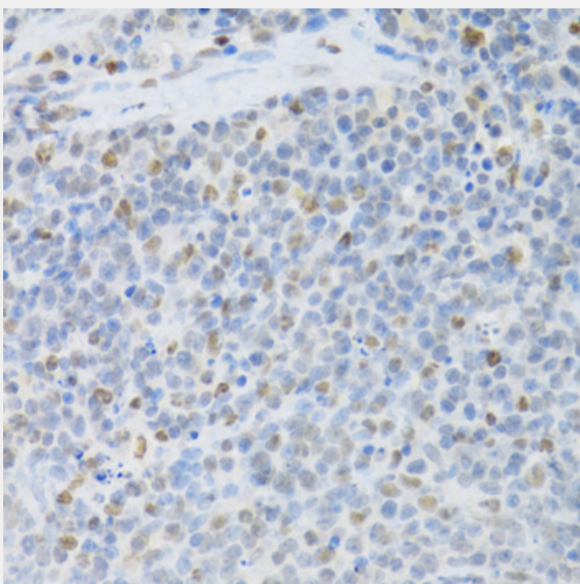
Immunohistochemistry of paraffin-embedded mouse kidney using SFN Antibody at dilution of 1:100 (40x lens).



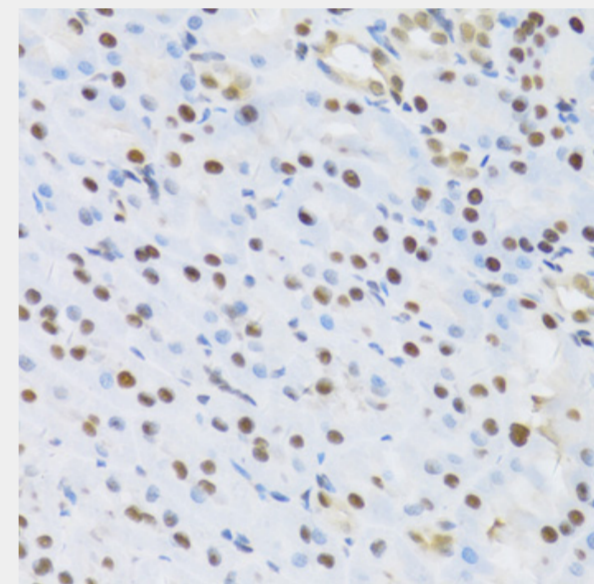
Immunohistochemistry of paraffin-embedded rat lung using SFN Antibody at dilution of 1:100 (40x lens).



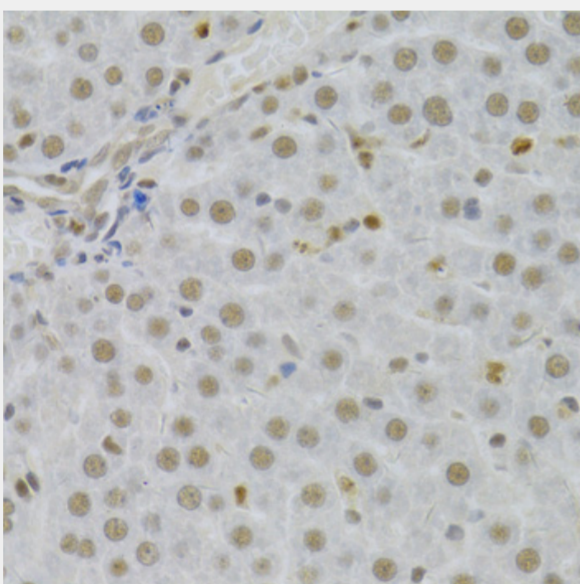
Immunohistochemistry of paraffin-embedded rat liver using SFN Antibody at dilution of 1:100 (40x lens).



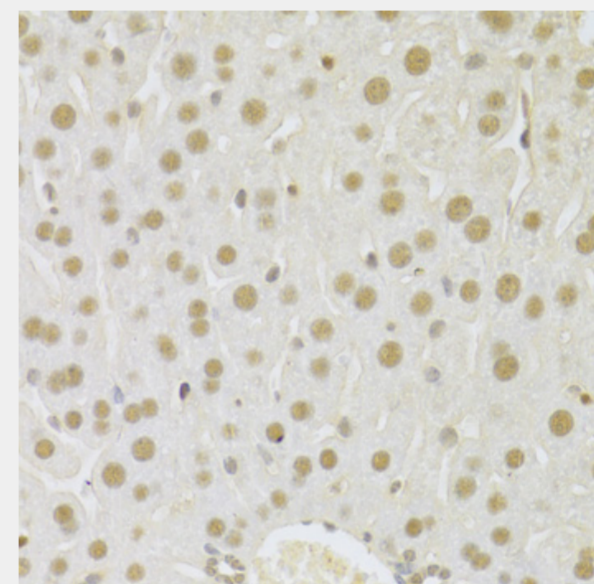
Immunohistochemistry of paraffin-embedded rat spleen using SFN Antibody at dilution of 1:100 (40x lens).



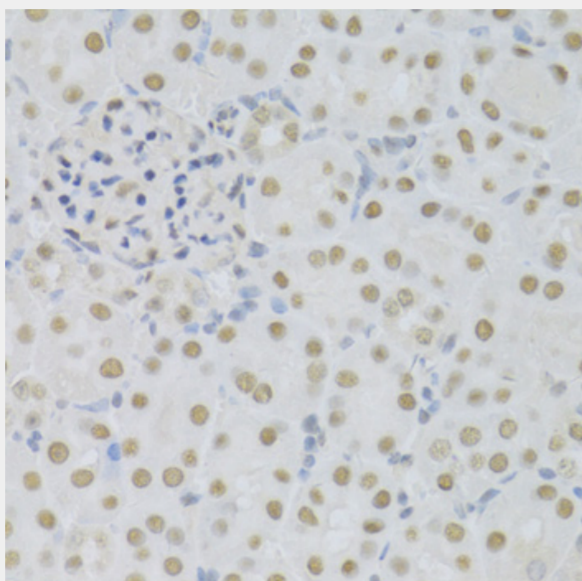
Immunohistochemistry of paraffin-embedded rat kidney using SFN Antibody at dilution of 1:100 (40x lens).



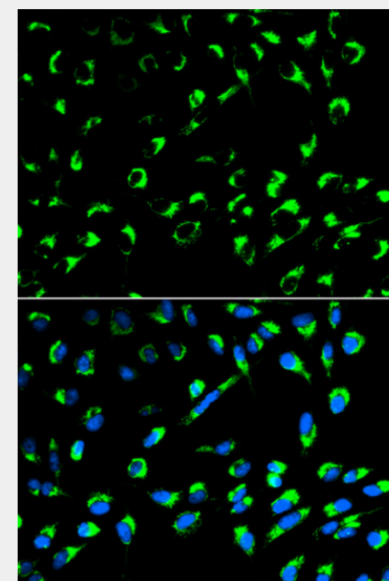
Immunohistochemistry of paraffin-embedded human liver using SFN Antibody at dilution of 1:100 (40x lens).



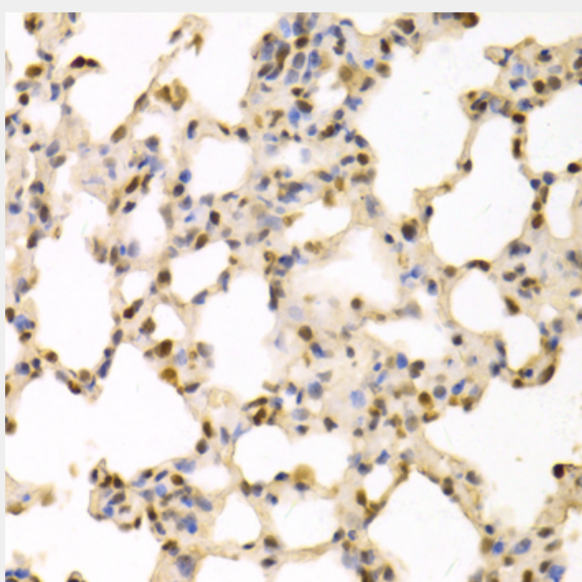
Immunohistochemistry of paraffin-embedded mouse liver using SFN Antibody at dilution of 1:100 (40x lens).



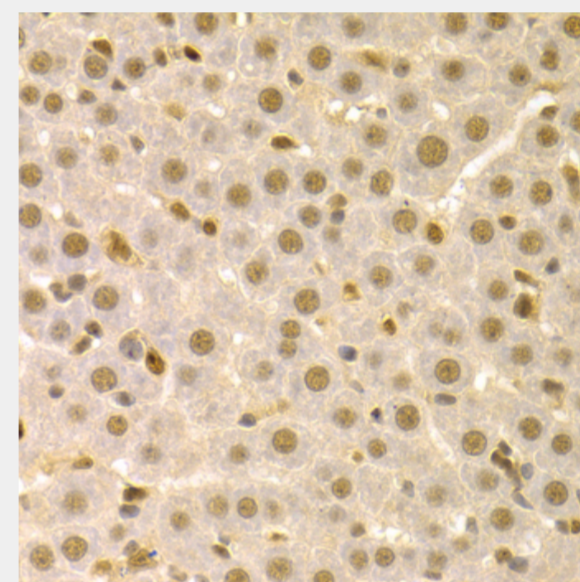
Immunohistochemistry of paraffin-embedded mouse kidney using SFN Antibody at dilution of 1:100 (40x lens).



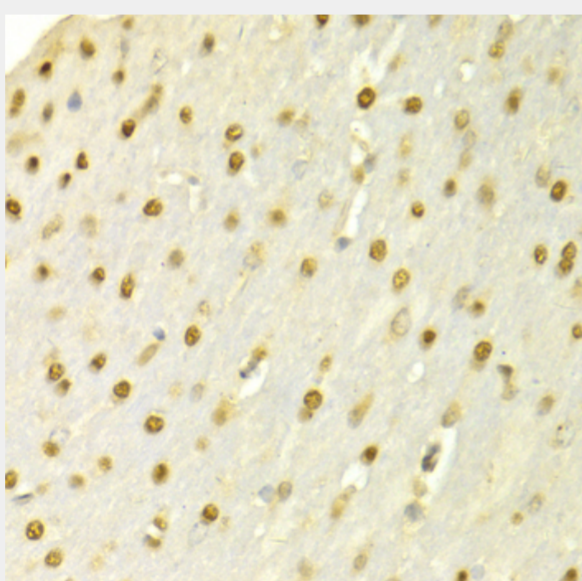
Immunofluorescence analysis of MCF-7 cells using SFN antibody. Blue: DAPI for nuclear staining.



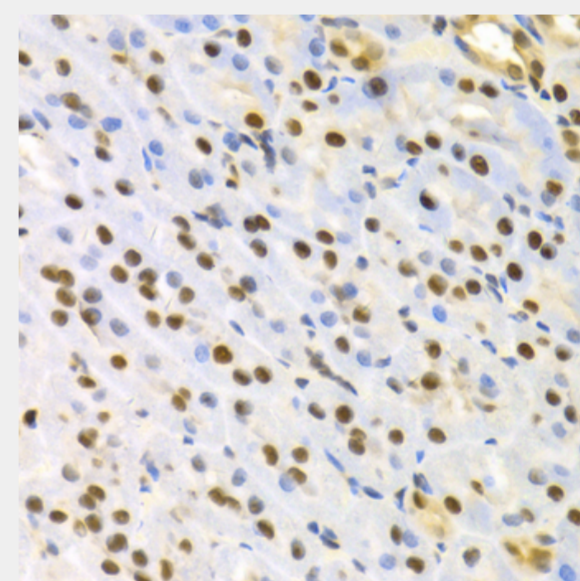
Immunohistochemistry of paraffin-embedded rat lung using SFN Antibody at dilution of 1:100 (40x lens).



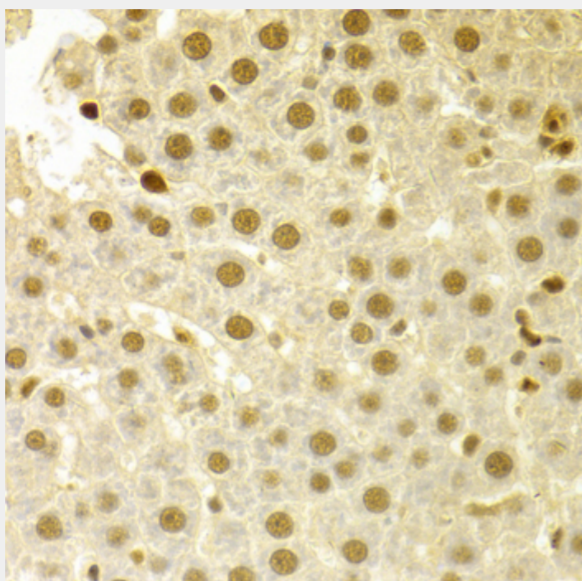
Immunohistochemistry of paraffin-embedded rat liver using SFN Antibody at dilution of 1:100 (40x lens).



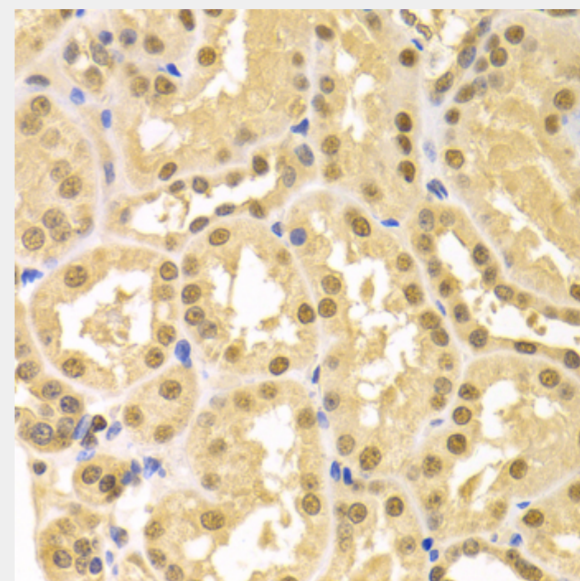
Immunohistochemistry of paraffin-embedded rat brain using SFN Antibody at dilution of 1:100 (40x lens).



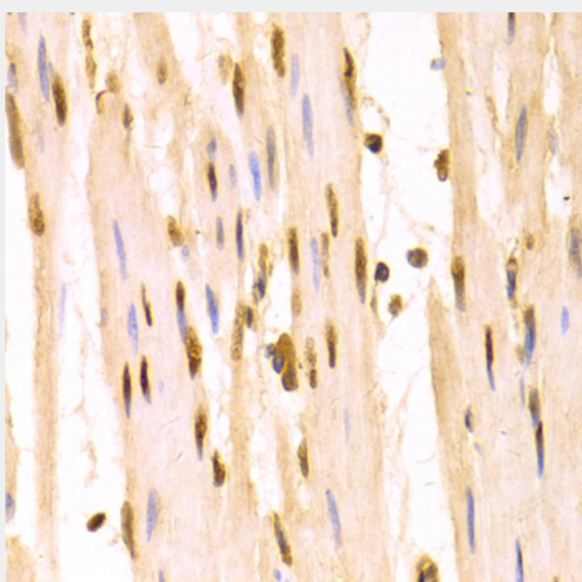
Immunohistochemistry of paraffin-embedded rat kidney using SFN Antibody at dilution of 1:100 (40x lens).



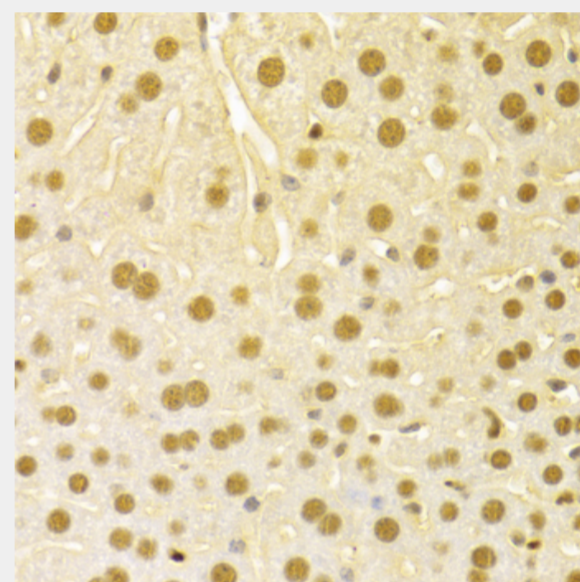
Immunohistochemistry of paraffin-embedded human liver injury using SFN Antibody at dilution of 1:100 (40x lens).



Immunohistochemistry of paraffin-embedded human kidney using SFN Antibody at dilution of 1:100 (40x lens).



Immunohistochemistry of paraffin-embedded human esophagus using SFN Antibody at dilution of 1:100 (40x lens).



Immunohistochemistry of paraffin-embedded mouse liver using SFN Antibody at dilution of 1:100 (40x lens).

All products are for RESEARCH USE ONLY. Not for diagnostic & therapeutic purposes!