

SFPQ Polyclonal Antibody

Catalog No: tcba597



Available Sizes

Size: 50ul

Size: 100ul

Size: 200ul



Specifications

Application:

WB,IHC,IF

Research Area:

RNA Binding Protein(RBP),

Species Reactivity:

Human,Mouse,Rat

Host Species:

Rabbit

Isotype:

IgG

Form:

Liquid

Storage Buffer:

Buffer: PBS with 0.02% sodium azide, 50% glycerol, pH7.3.

Recommended Dilution:

WB 1:500 - 1:1000

IHC 1:50 - 1:100

IF 1:50 - 1:100

Storage Instruction:

Store at -20°C. Avoid freeze / thaw cycles.

Alternative Names:

POMP100;PPP1R140;PSF

SwissProt:

P23246

Gene ID:

6421 (human);

Calculated Molecular Weight:

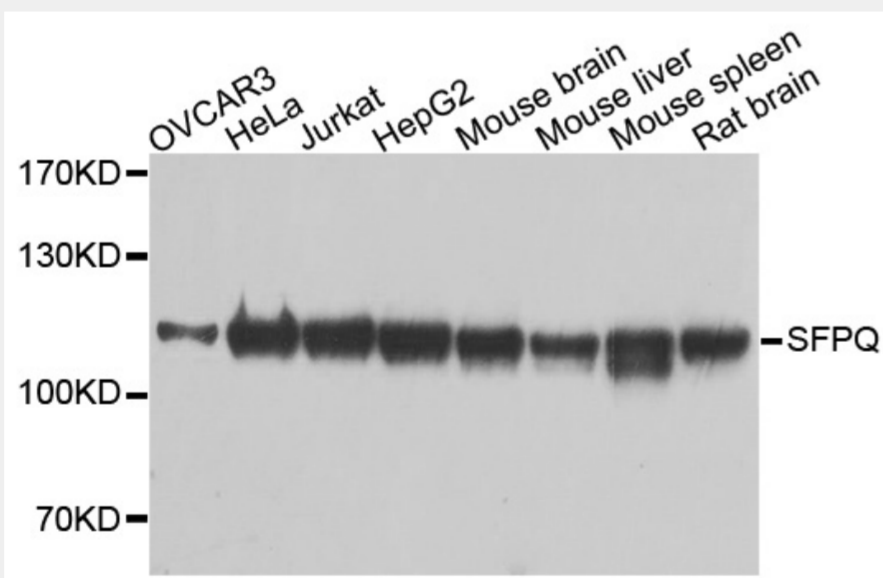
72kDa/76kDa

Purification:

Affinity purification

Cellular Location:

Cytoplasm,Nucleus matrix,



Western blot analysis of extracts of various cell lines, using SFPQ antibody at 1:1000 dilution.

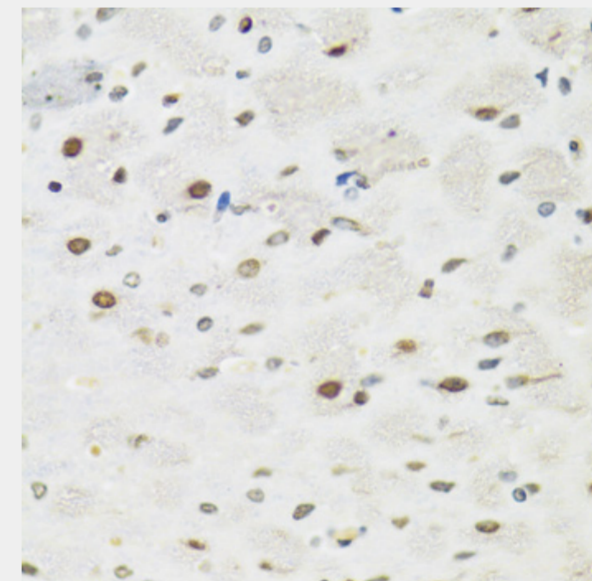
Secondary antibody: HRP Goat Anti-Rabbit IgG (H+L) at 1:10000 dilution.

Lysates/proteins: 25ug per lane.

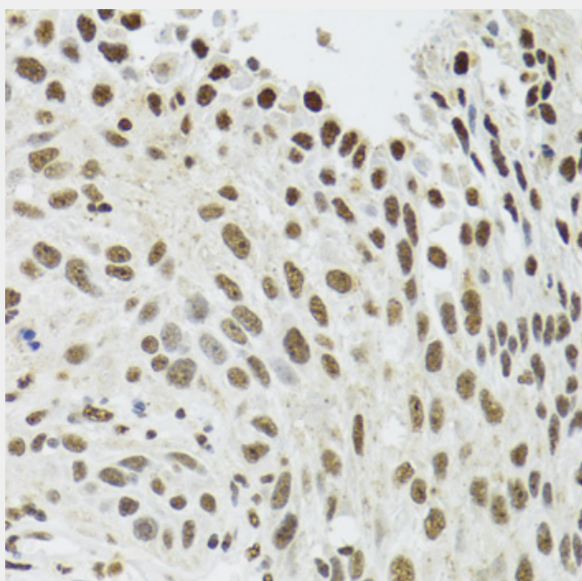
Blocking buffer: 3% nonfat dry milk in TBST.

Detection: ECL Basic Kit.

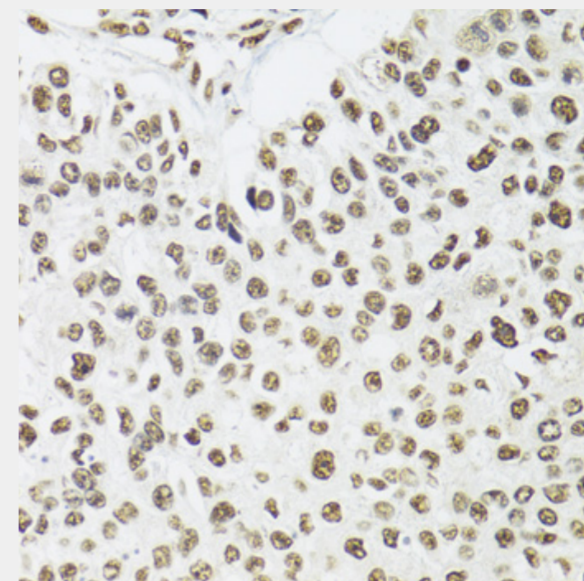
Exposure time: 1s.



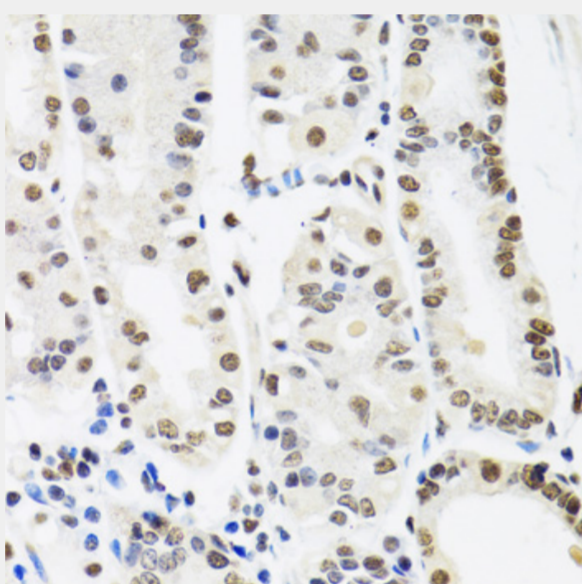
Immunohistochemistry of paraffin-embedded rat brain using SFPQ antibody at dilution of 1:100 (40x lens).



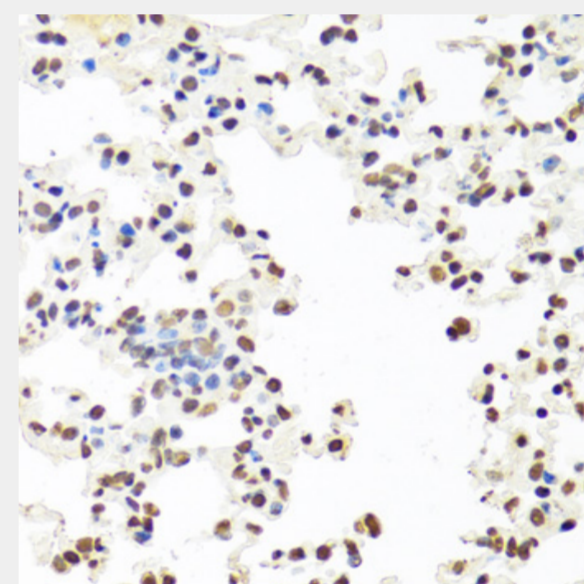
Immunohistochemistry of paraffin-embedded human lung cancer using SFPQ antibody at dilution of 1:100 (40x lens).



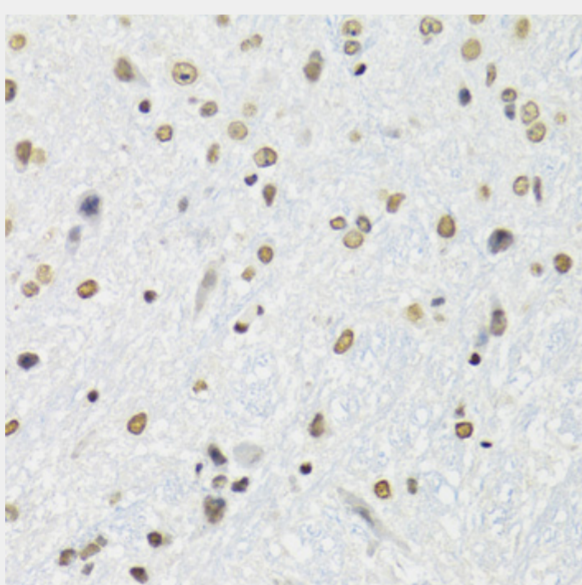
Immunohistochemistry of paraffin-embedded human esophageal cancer using SFPQ antibody at dilution of 1:100 (40x lens).



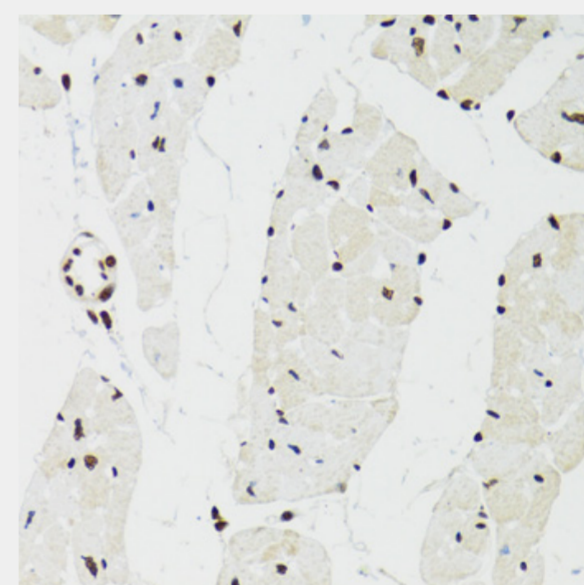
Immunohistochemistry of paraffin-embedded human stomach using SFPQ antibody at dilution of 1:100 (40x lens).



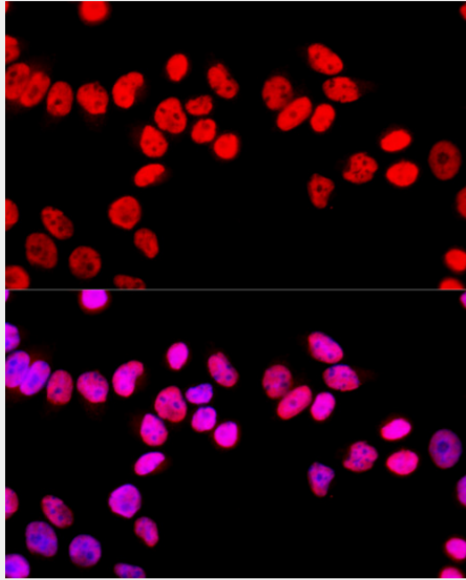
Immunohistochemistry of paraffin-embedded mouse lung using SFPQ antibody at dilution of 1:100 (40x lens).



Immunohistochemistry of paraffin-embedded mouse brain using SFPQ antibody at dilution of 1:100 (40x lens).



Immunohistochemistry of paraffin-embedded mouse heart using SFPQ antibody at dilution of 1:100 (40x lens).



Immunofluorescence analysis of HeLa cells using SFPQ antibody at dilution of 1:100 (40x lens). Blue: DAPI for nuclear staining.

All products are for RESEARCH USE ONLY. Not for diagnostic & therapeutic purposes!