

PARP1 Polyclonal Antibody

Catalog No: tcba586



Available Sizes

Size: 50ul

Size: 100ul

Size: 200ul



Specifications

Application:

WB,IHC,IF

Research Area:

Cancer,DNA Damage/Repair,NF-κB pathway,RNA Binding Protein(RBP),Epigenetics,

Species Reactivity:

Human,Mouse,Rat

Host Species:

Rabbit

Isotype:

IgG

Form:

Liquid

Storage Buffer:

Buffer: PBS with 0.02% sodium azide, 50% glycerol, pH7.3.

Recommended Dilution:

WB 1:1000 - 1:3000

IHC 1:50 - 1:200

IF 1:50 - 1:200

Storage Instruction:

Store at -20°C. Avoid freeze / thaw cycles.

Alternative Names:

ADPRT;ADPRT1;ADPRT1;ARTD1;pADPRT-1;PARP;PARP-1;PPOL

SwissProt:

P09874

Gene ID:

142 (human);

Calculated Molecular Weight:

113kDa

Purification:

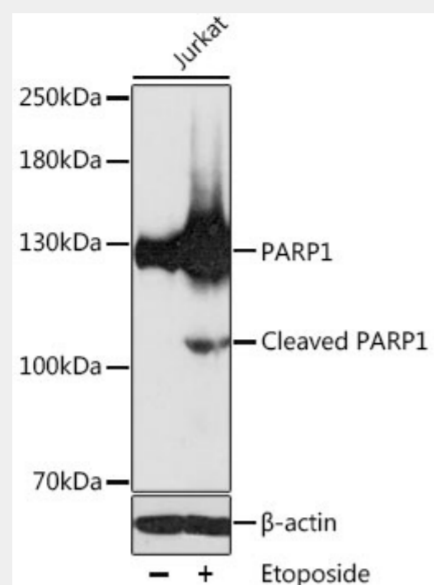
Affinity purification

Cellular Location:

Nucleus,nucleolus,

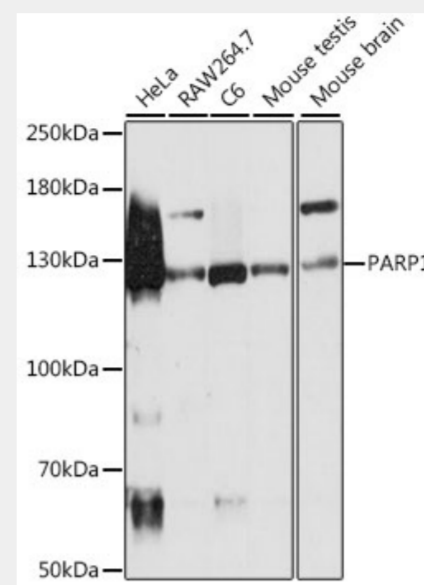
Product Description

This gene encodes a chromatin-associated enzyme, poly(ADP-ribosyl)transferase, which modifies various nuclear proteins by poly(ADP-ribosyl)ation. The modification is dependent on DNA and is involved in the regulation of various important cellular processes such as differentiation, proliferation, and tumor transformation and also in the regulation of the molecular events involved in the recovery of cell from DNA damage. In addition, this enzyme may be the site of mutation in Fanconi anemia, and may participate in the pathophysiology of type I diabetes.



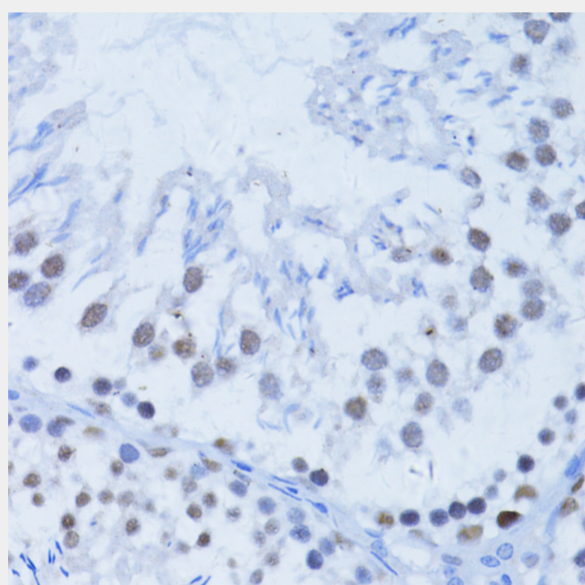
Western blot analysis of extracts of various cell lines, using PARP1 antibody at 1:500 dilution.

Secondary antibody: HRP Goat Anti-Rabbit IgG (H+L) at 1:10000 dilution.
Lysates/proteins: 25ug per lane.
Blocking buffer: 3% nonfat dry milk in TBST.
Detection: ECL Basic Kit.
Exposure time: 5s.

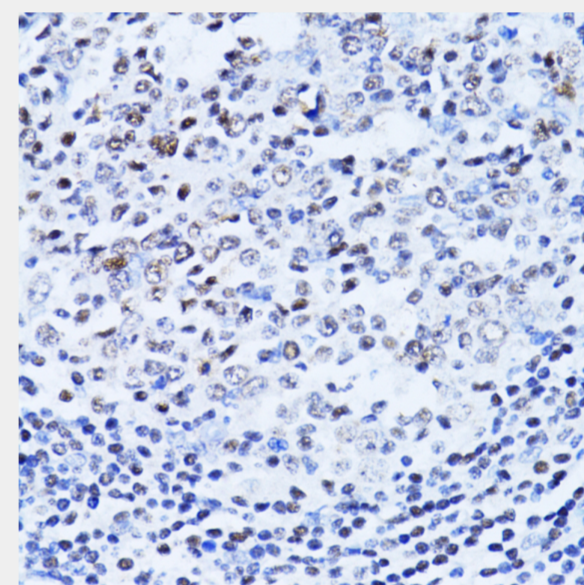


Western blot analysis of extracts of various cell lines, using PARP1 antibody at 1:500 dilution.

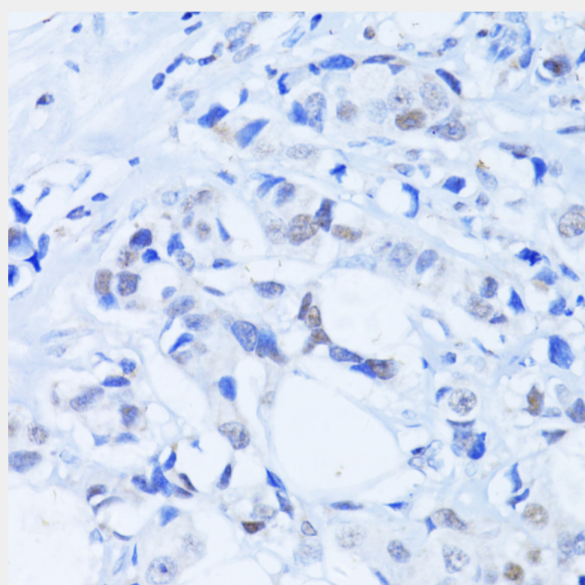
Secondary antibody: HRP Goat Anti-Rabbit IgG (H+L) at 1:10000 dilution.
Lysates/proteins: 25ug per lane.
Blocking buffer: 3% nonfat dry milk in TBST.
Detection: ECL Basic Kit.
Exposure time: 5s.



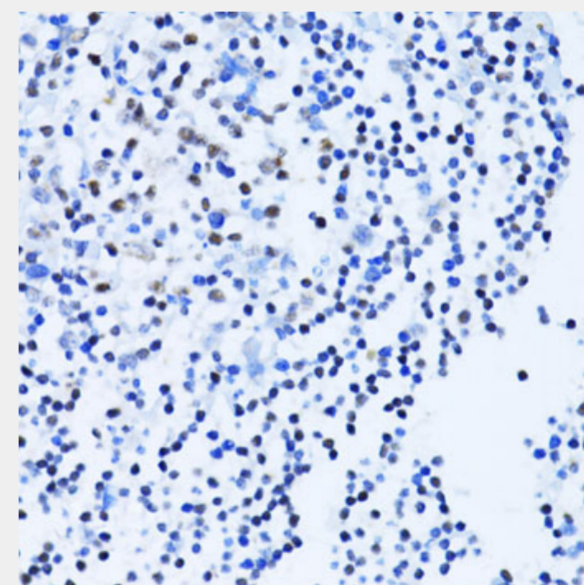
Immunohistochemistry of paraffin-embedded rat testis using PARP1 Antibody at dilution of 1:100 (40x lens).



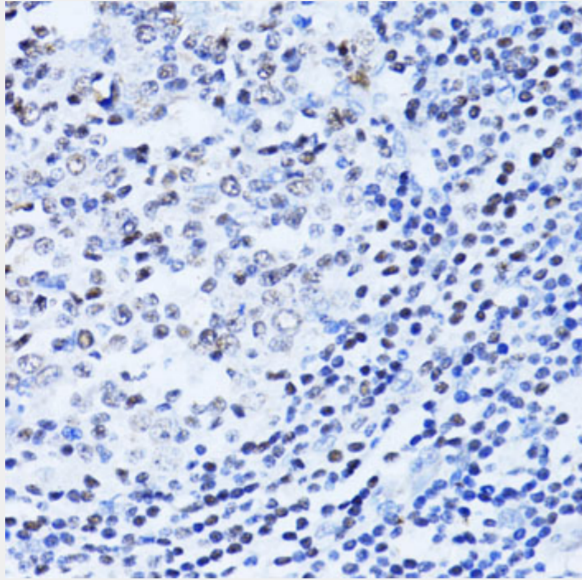
Immunohistochemistry of paraffin-embedded human vermiform appendix using PARP1 Antibody at dilution of 1:100 (40x lens).



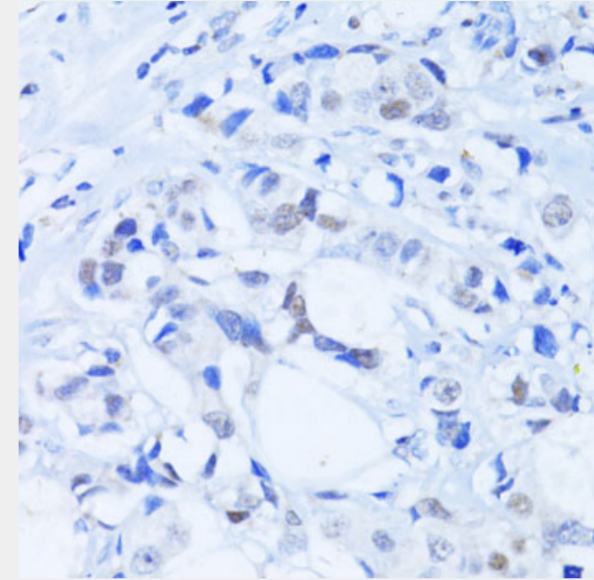
Immunohistochemistry of paraffin-embedded human breast cancer using PARP1 Antibody at dilution of 1:100 (40x lens).



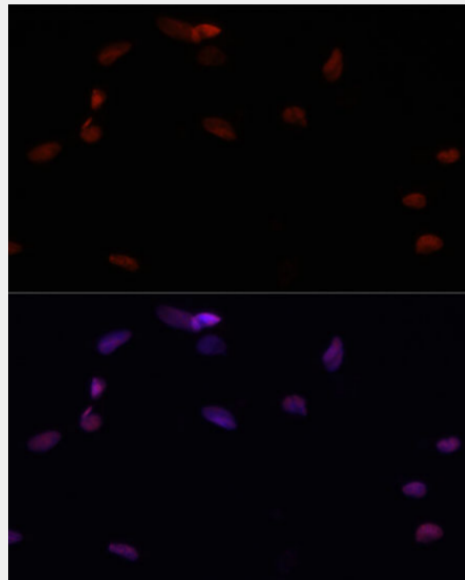
Immunohistochemistry of paraffin-embedded human tonsil using PARP1 antibody at dilution of 1:100 (40x lens).



Immunohistochemistry of paraffin-embedded human appendix using PARP1 antibody at dilution of 1:100 (40x lens).



Immunohistochemistry of paraffin-embedded human mammary cancer using PARP1 antibody at dilution of 1:100 (40x lens).



Immunofluorescence analysis of U2OS cells using PARP1 antibody at dilution of 1:100. Blue: DAPI for nuclear staining.

All products are for RESEARCH USE ONLY. Not for diagnostic & therapeutic purposes!