

HSPA9 Polyclonal Antibody

Catalog No: tcba379



Available Sizes

Size: 50ul

Size: 100ul

Size: 200ul



Specifications

Application:

WB,IHC,IF

Research Area:

Cancer,Cell cycle,Apoptosis,Tumor biomarkers,Cell Biology,Metabolism,RNA Binding Protein(RBP),

Species Reactivity:

Human,Mouse,Rat

Host Species:

Rabbit

Isotype:

IgG

Form:

Liquid

Storage Buffer:

Buffer: PBS with 0.02% sodium azide, 50% glycerol, pH7.3.

Recommended Dilution:

WB 1:500 - 1:2000

IHC 1:50 - 1:200

IF 1:50 - 1:200

Storage Instruction:

Store at -20°C. Avoid freeze / thaw cycles.

Alternative Names:

CRP40;CSA;EVPLS;GRP-75;GRP75;HEL-S-124m;HSPA9B;MOT;MOT2;MTHSP75;PBP74;SAAN;SIDBA4

SwissProt:

P38646

Gene ID:

3313 (human);

Calculated Molecular Weight:

73kDa

Purification:

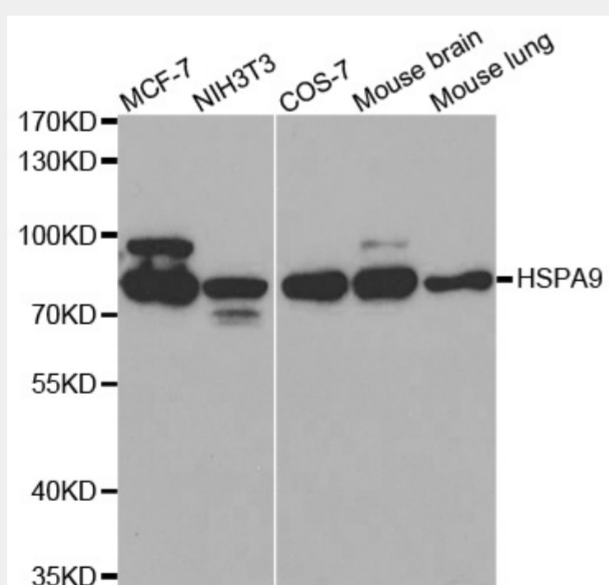
Affinity purification

Cellular Location:

Mitochondrion,Nucleus,nucleolus,

Product Description

This gene encodes a member of the heat shock protein 70 gene family. The encoded protein is primarily localized to the mitochondria but is also found in the endoplasmic reticulum, plasma membrane and cytoplasmic vesicles. This protein is a heat-shock cognate protein. This protein plays a role in cell proliferation, stress response and maintenance of the mitochondria. A pseudogene of this gene is found on chromosome 2.

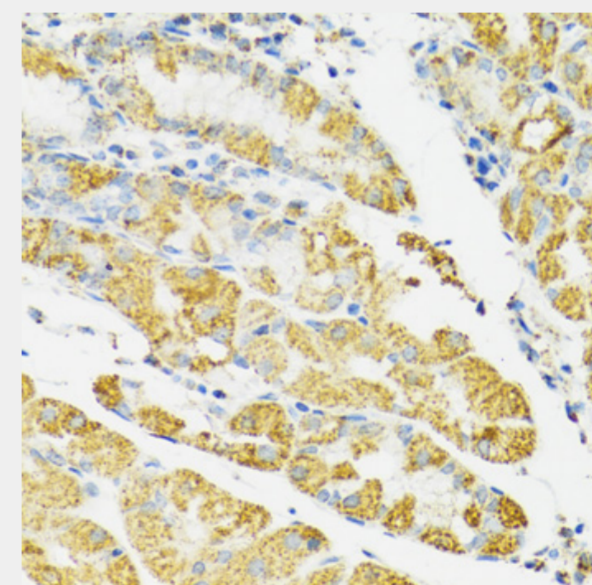


Western blot analysis of extracts of various cell lines, using HSPA9 antibody at 1:500 dilution.

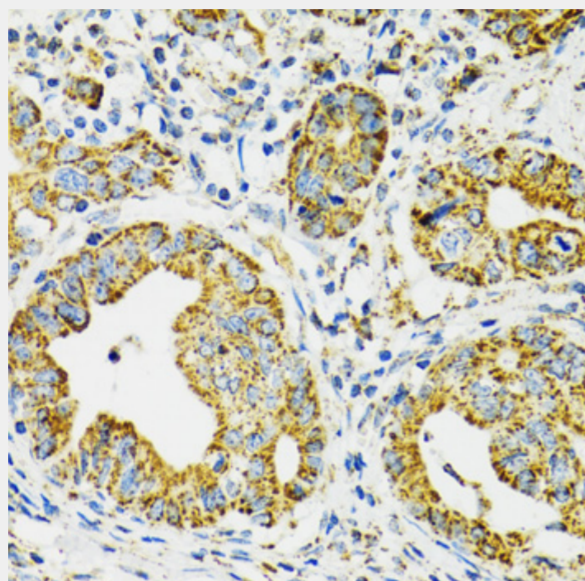
Secondary antibody: HRP Goat Anti-Rabbit IgG (H+L) at 1:10000 dilution.

Lysates/proteins: 25ug per lane.

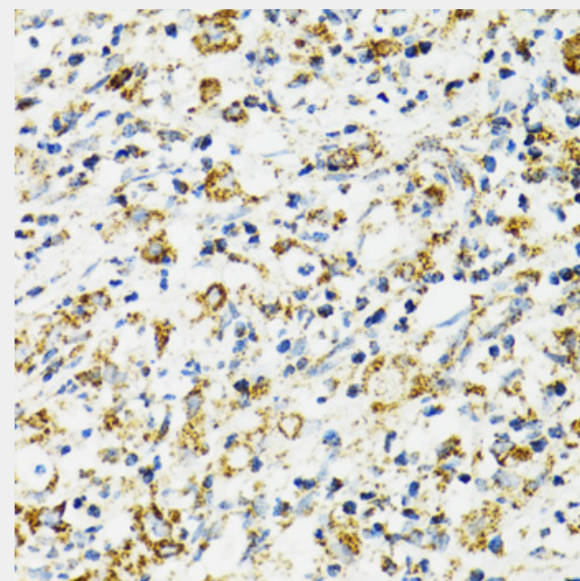
Blocking buffer: 3% nonfat dry milk in TBST.



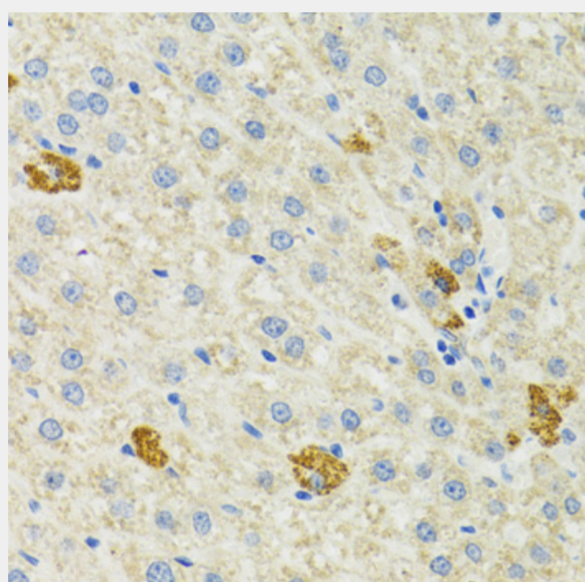
Immunohistochemistry of paraffin-embedded human stomach using HSPA9 antibody at dilution of 1:100 (40x lens).



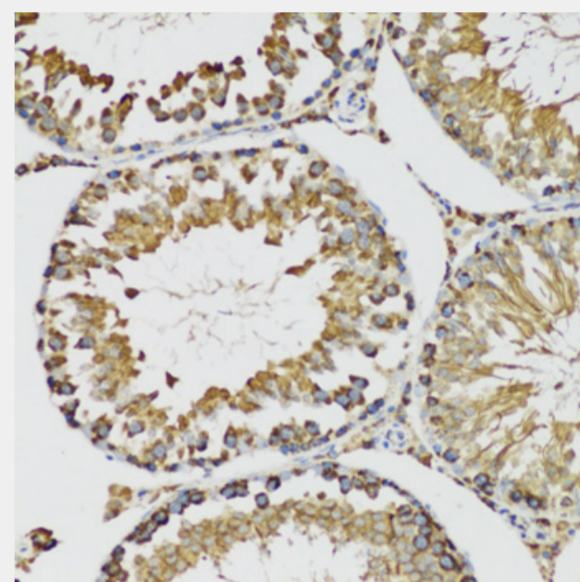
Immunohistochemistry of paraffin-embedded human gastric cancer using HSPA9 antibody at dilution of 1:100 (40x lens).



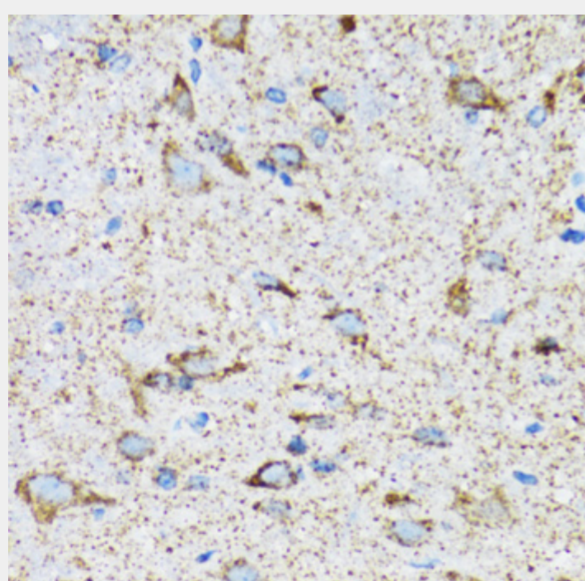
Immunohistochemistry of paraffin-embedded human uterine cancer using HSPA9 antibody at dilution of 1:100 (40x lens).



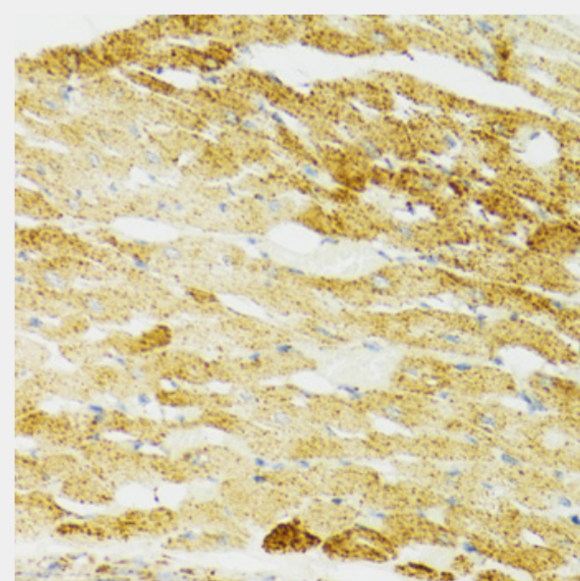
Immunohistochemistry of paraffin-embedded mouse liver using HSPA9 antibody at dilution of 1:100 (40x lens).



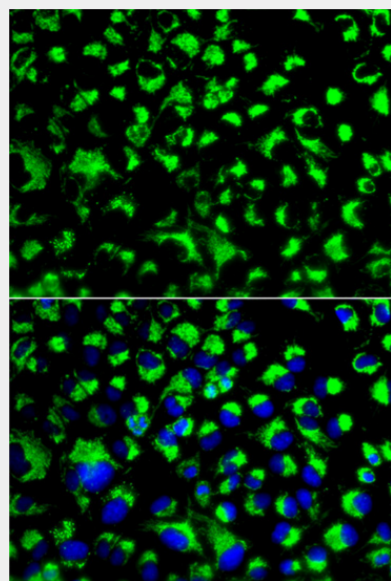
Immunohistochemistry of paraffin-embedded mouse testis using HSPA9 antibody at dilution of 1:100 (20x lens).



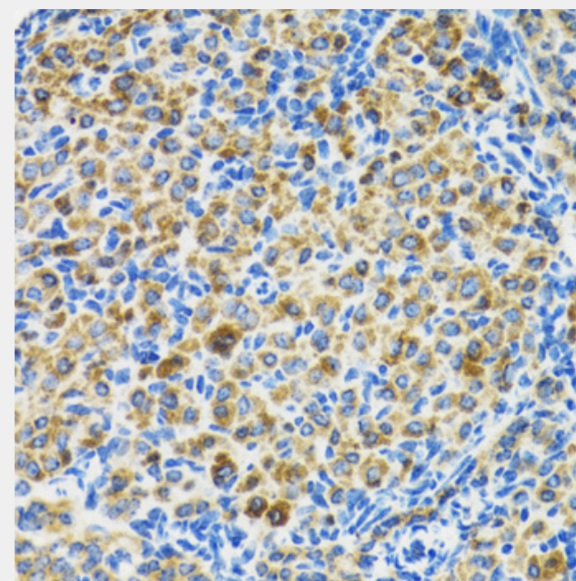
Immunohistochemistry of paraffin-embedded mouse spinal cord using HSPA9 antibody at dilution of 1:100 (40x lens).



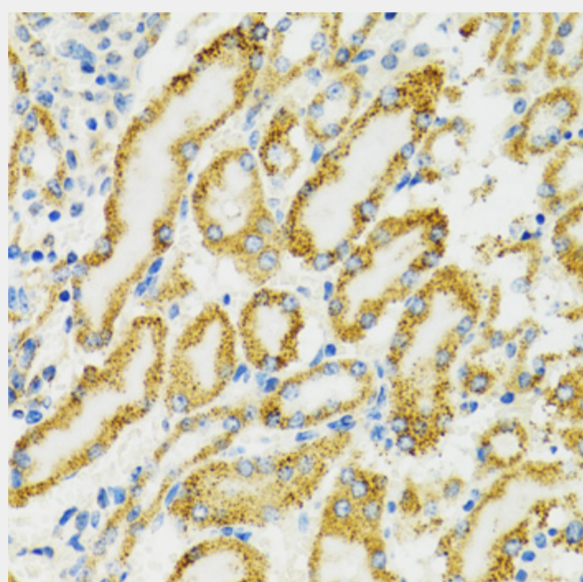
Immunohistochemistry of paraffin-embedded mouse heart using HSPA9 antibody at dilution of 1:100 (40x lens).



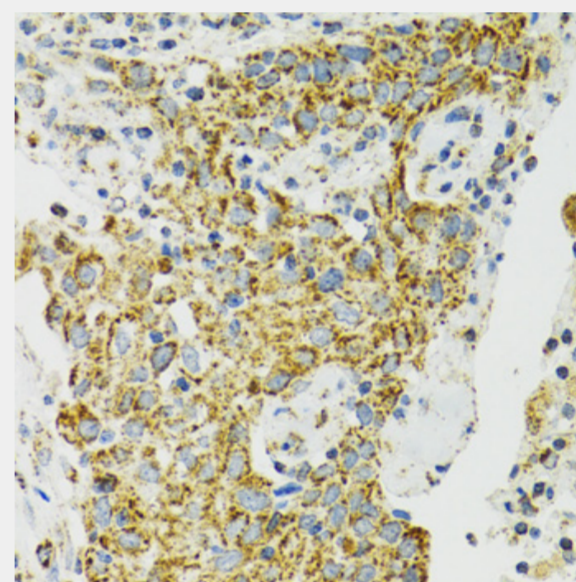
Immunofluorescence analysis of U2OS cells using HSPA9 antibody. Blue: DAPI for nuclear staining.



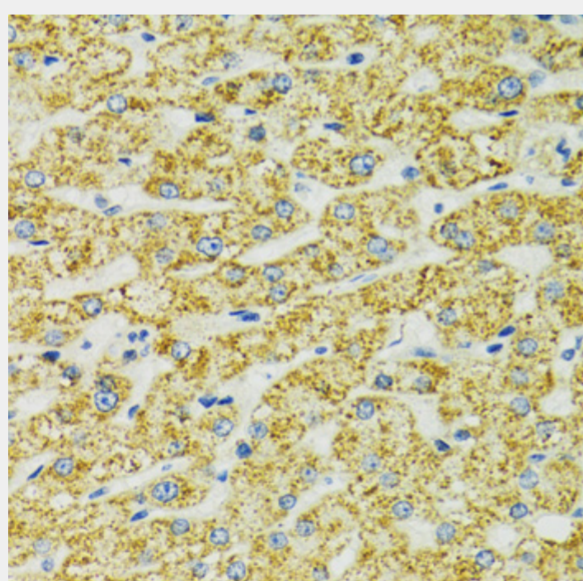
Immunohistochemistry of paraffin-embedded rat ovary using HSPA9 antibody at dilution of 1:100 (40x lens).



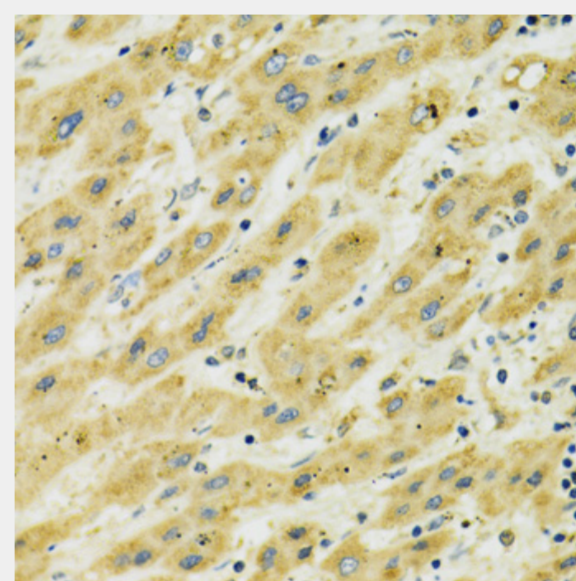
Immunohistochemistry of paraffin-embedded rat kidney using HSPA9 antibody at dilution of 1:100 (40x lens).



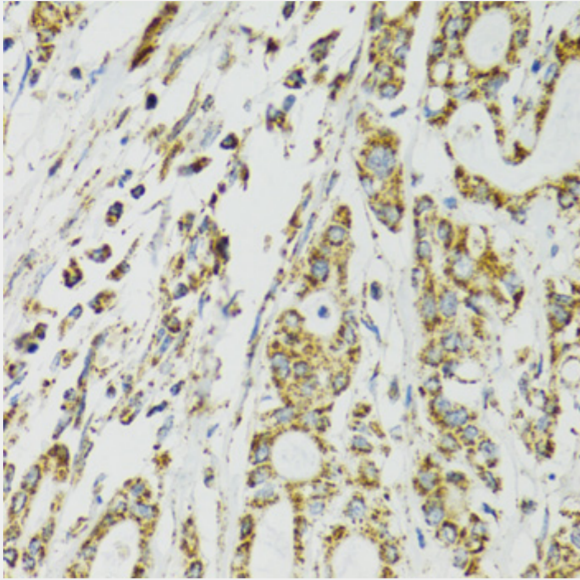
Immunohistochemistry of paraffin-embedded human lung cancer using HSPA9 antibody at dilution of 1:100 (40x lens).



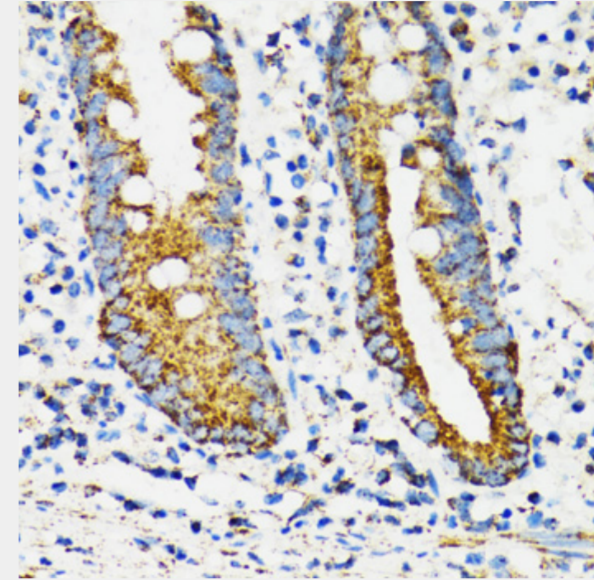
Immunohistochemistry of paraffin-embedded human liver using HSPA9 antibody at dilution of 1:100 (40x lens).



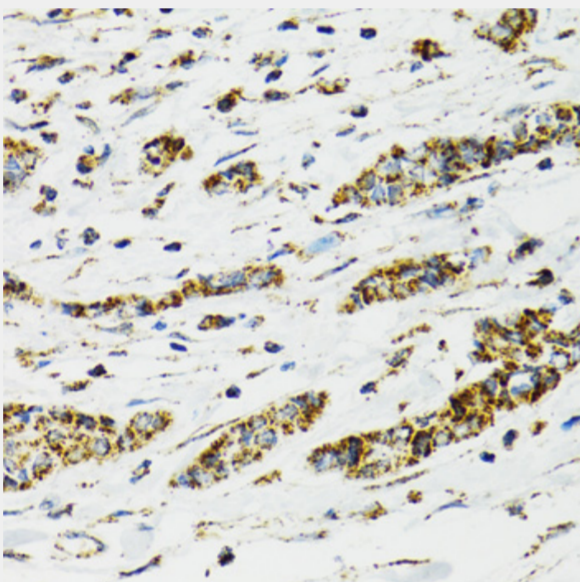
Immunohistochemistry of paraffin-embedded human liver cancer using HSPA9 antibody at dilution of 1:100 (40x lens).



Immunohistochemistry of paraffin-embedded human colon carcinoma using HSPA9 antibody at dilution of 1:100 (40x lens).



Immunohistochemistry of paraffin-embedded human vermiform appendix using HSPA9 antibody at dilution of 1:100 (40x lens).



Immunohistochemistry of paraffin-embedded human breast cancer using HSPA9 antibody at dilution of 1:100 (40x lens).

All products are for RESEARCH USE ONLY. Not for diagnostic & therapeutic purposes!