

CDK4 Polyclonal Antibody

Catalog No: tcba267



Available Sizes

Size: 50ul

Size: 100ul

Size: 200ul



Specifications

Application:

WB,IHC,IF

Research Area:

Cancer,Cell cycle,Cell Biology,Cell Cycle,

Species Reactivity:

Human,Mouse,Rat

Host Species:

Rabbit

Isotype:

IgG

Form:

Liquid

Storage Buffer:

Buffer: PBS with 0.02% sodium azide, 50% glycerol, pH7.3.

Recommended Dilution:

WB 1:500 - 1:2000

IHC 1:50 - 1:200

IF 1:20 - 1:100

Storage Instruction:

Store at -20°C. Avoid freeze / thaw cycles.

Alternative Names:

CMM3;PSK-J3

SwissProt:

P11802

Gene ID:

1019 (human);

Calculated Molecular Weight:

20kDa/33kDa

Purification:

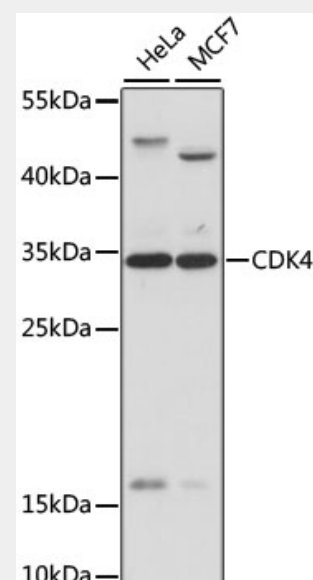
Affinity purification

Cellular Location:

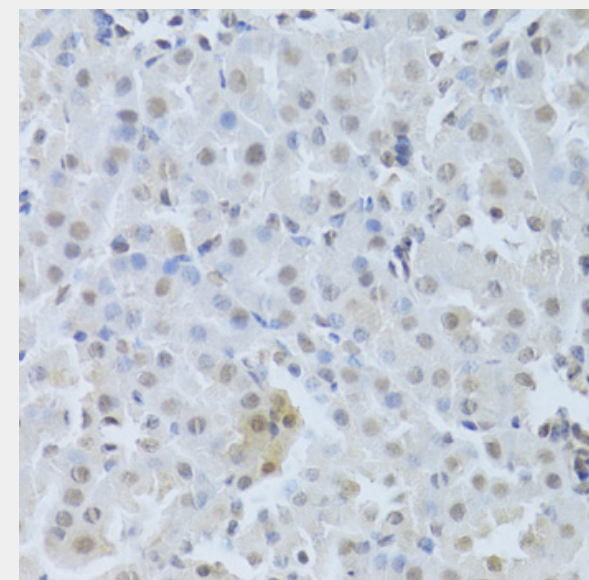
Cytoplasm,Membrane,Nucleus,

Product Description

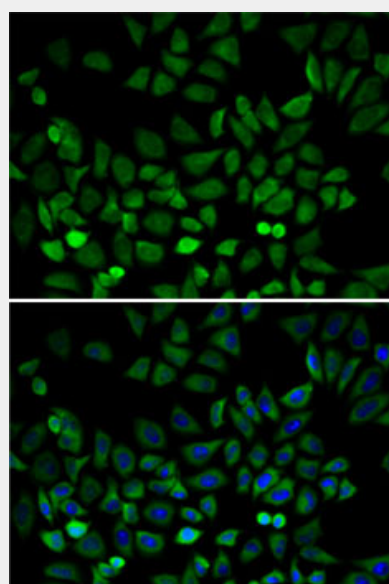
The protein encoded by this gene is a member of the Ser/Thr protein kinase family. This protein is highly similar to the gene products of *S. cerevisiae* cdc28 and *S. pombe* cdc2. It is a catalytic subunit of the protein kinase complex that is important for cell cycle G1 phase progression. The activity of this kinase is restricted to the G1-S phase, which is controlled by the regulatory subunits D-type cyclins and CDK inhibitor p16(INK4a). This kinase was shown to be responsible for the phosphorylation of retinoblastoma gene product (Rb). Mutations in this gene as well as in its related proteins including D-type cyclins, p16(INK4a) and Rb were all found to be associated with tumorigenesis of a variety of cancers. Multiple polyadenylation sites of this gene have been reported.



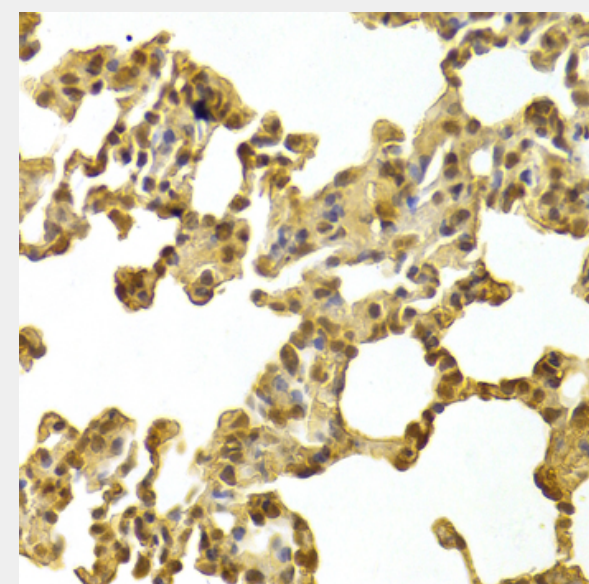
Western blot analysis of extracts of various cell lines, using CDK4 antibody at 1:1000 dilution.
Secondary antibody: HRP Goat Anti-Rabbit IgG (H+L) at 1:10000 dilution.
Lysates/proteins: 25ug per lane.
Blocking buffer: 3% nonfat dry milk in TBST.
Detection: ECL Basic Kit.
Exposure time: 10s.



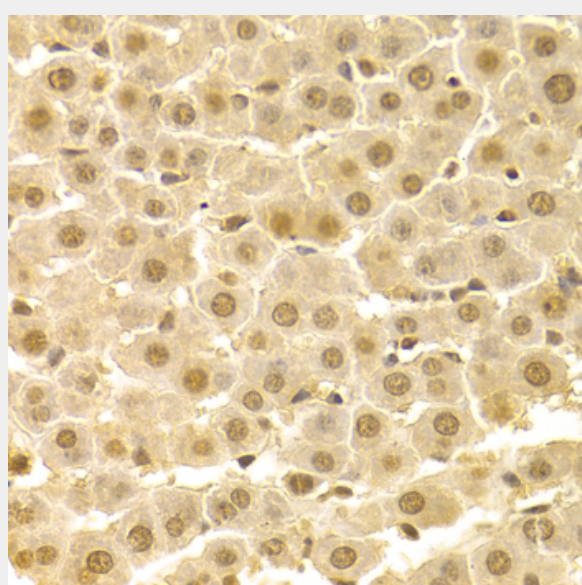
Immunohistochemistry of paraffin-embedded mouse kidney using CDK4 Antibody at dilution of 1:100 (40x lens).



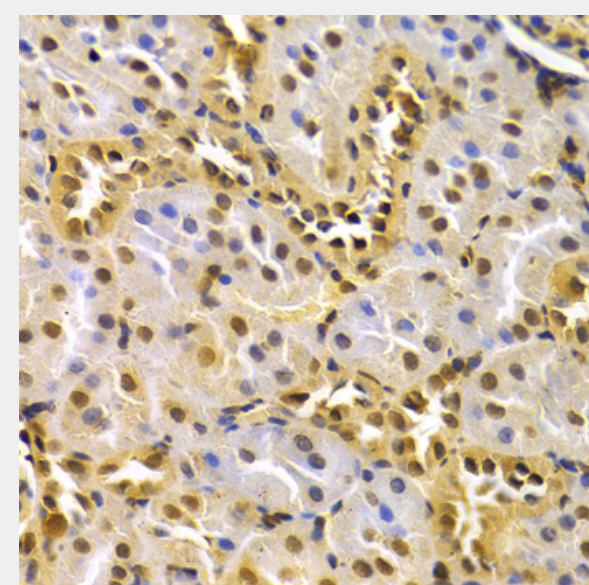
Immunofluorescence analysis of A-549 cells using CDK4 antibody. Blue: DAPI for nuclear staining.



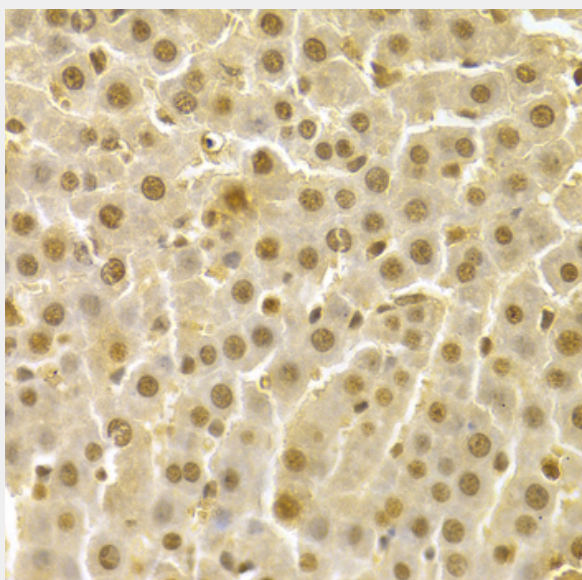
Immunohistochemistry of paraffin-embedded rat lung using CDK4 Antibody at dilution of 1:100 (40x lens).



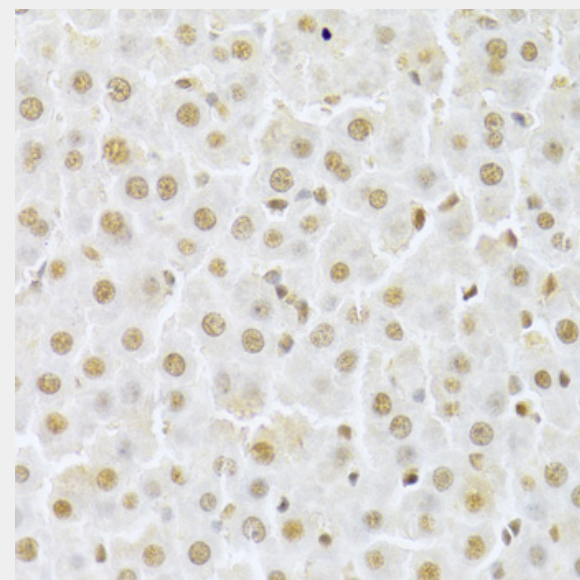
Immunohistochemistry of paraffin-embedded rat liver using CDK4 Antibody at dilution of 1:100 (40x lens).



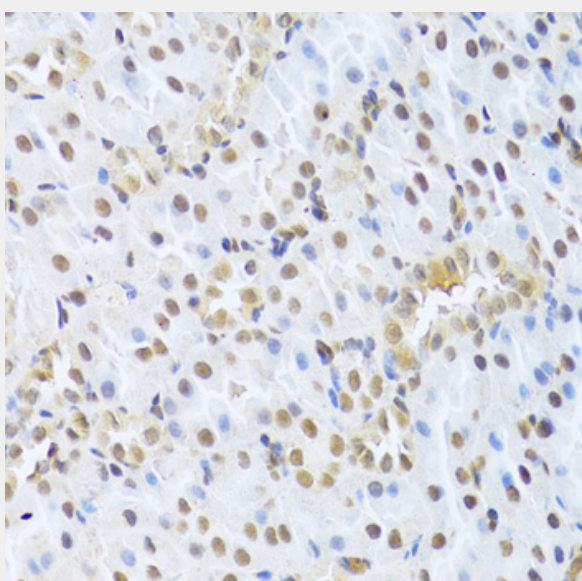
Immunohistochemistry of paraffin-embedded rat kidney using CDK4 Antibody at dilution of 1:100 (40x lens).



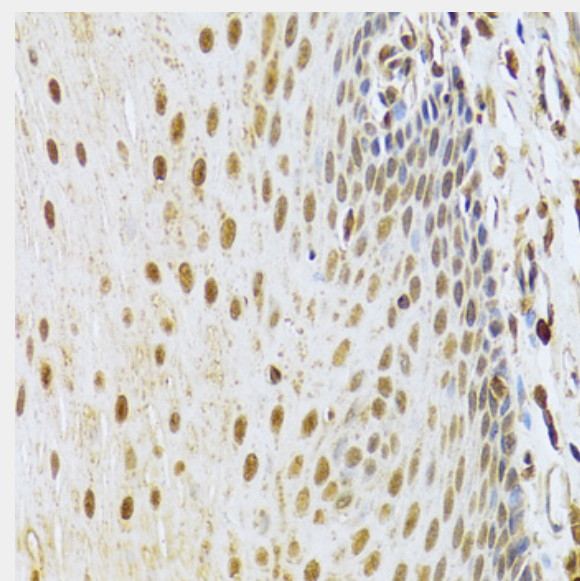
Immunohistochemistry of paraffin-embedded human liver injury using CDK4 Antibody at dilution of 1:100 (40x lens).



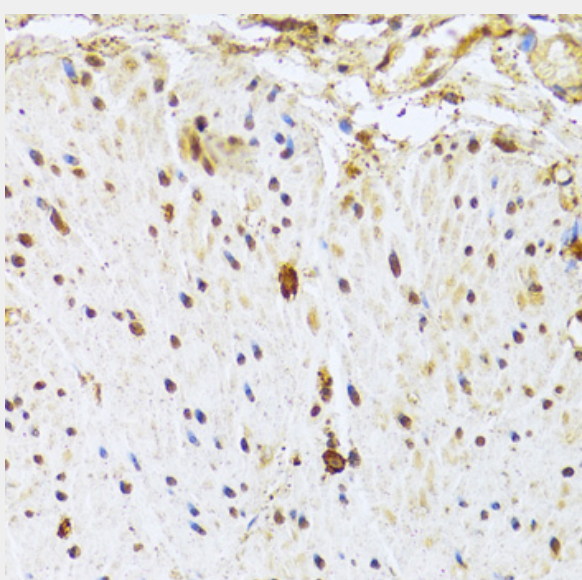
Immunohistochemistry of paraffin-embedded rat liver using CDK4 Antibody at dilution of 1:100 (40x lens).



Immunohistochemistry of paraffin-embedded rat kidney using CDK4 Antibody at dilution of 1:100 (40x lens).



Immunohistochemistry of paraffin-embedded human esophagus using CDK4 Antibody at dilution of 1:100 (40x lens).



Immunohistochemistry of paraffin-embedded human rectal cancer using CDK4 Antibody at dilution of 1:100 (40x lens).

All products are for RESEARCH USE ONLY. Not for diagnostic & therapeutic purposes!