

MDM2 Polyclonal Antibody

Catalog No: tcba255



Available Sizes

Size: 50ul

Size: 100ul

Size: 200ul



Specifications

Application:

WB,IHC,IF

Research Area:

Cancer,Cell cycle,p53 pathway,AKT pathway,Cell Biology,PI3K-Akt pathway,Cell Cycle,

Species Reactivity:

Human,Mouse,Rat

Host Species:

Rabbit

Isotype:

IgG

Form:

Liquid

Storage Buffer:

Buffer: PBS with 0.02% sodium azide, 50% glycerol, pH7.3.

Recommended Dilution:

WB 1:500 - 1:2000

IHC 1:50 - 1:200

IF 1:50 - 1:200

Storage Instruction:

Store at -20°C. Avoid freeze / thaw cycles.

Alternative Names:

ACTFS;hdm2;HDMX

SwissProt:

Q00987

Gene ID:

4193 (human);

Calculated Molecular Weight:

11-14kDa/24-55kDa

Purification:

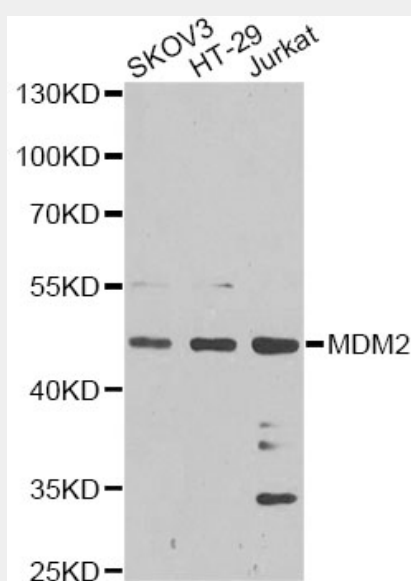
Affinity purification

Cellular Location:

Cytoplasm,Nucleus,nucleolus,nucleoplasm,

Product Description

This gene encodes a nuclear-localized E3 ubiquitin ligase. The encoded protein can promote tumor formation by targeting tumor suppressor proteins, such as p53, for proteasomal degradation. This gene is itself transcriptionally-regulated by p53. Overexpression or amplification of this locus is detected in a variety of different cancers. There is a pseudogene for this gene on chromosome 2. Alternative splicing results in a multitude of transcript variants, many of which may be expressed only in tumor cells.



Western blot analysis of extracts of various cell lines, using MDM2 antibody at 1:1000 dilution.

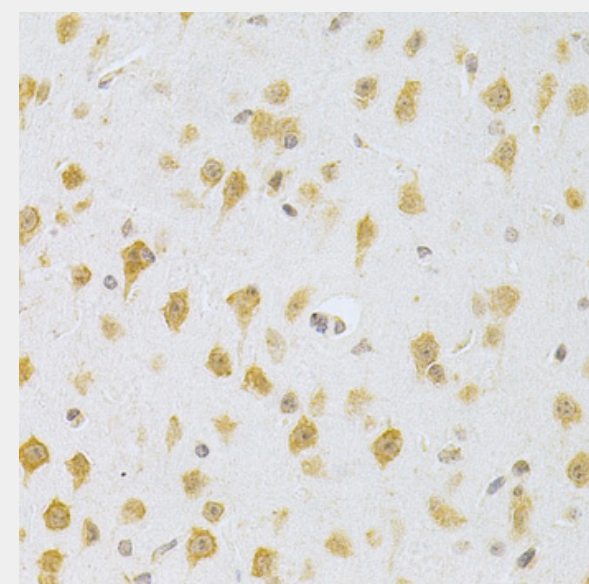
Secondary antibody: HRP Goat Anti-Rabbit IgG (H+L) at 1:10000 dilution.

Lysates/proteins: 25ug per lane.

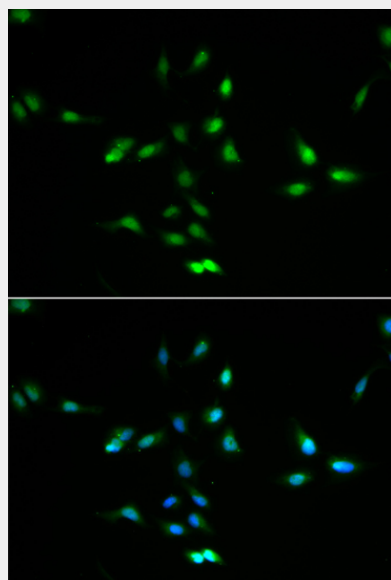
Blocking buffer: 3% nonfat dry milk in TBST.

Detection: ECL Basic Kit.

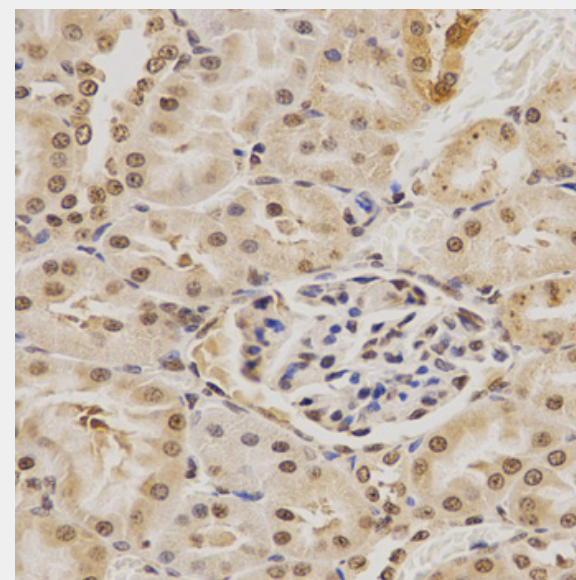
Exposure time: 90s.



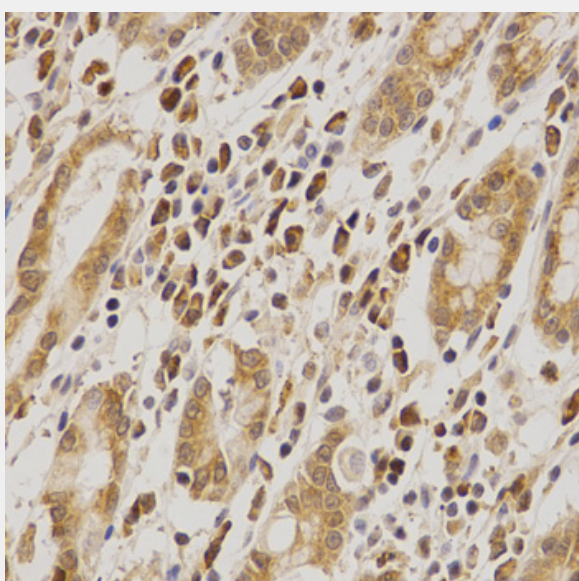
Immunohistochemistry of paraffin-embedded mouse brain using MDM2 Antibody at dilution of 1:200 (40x lens).



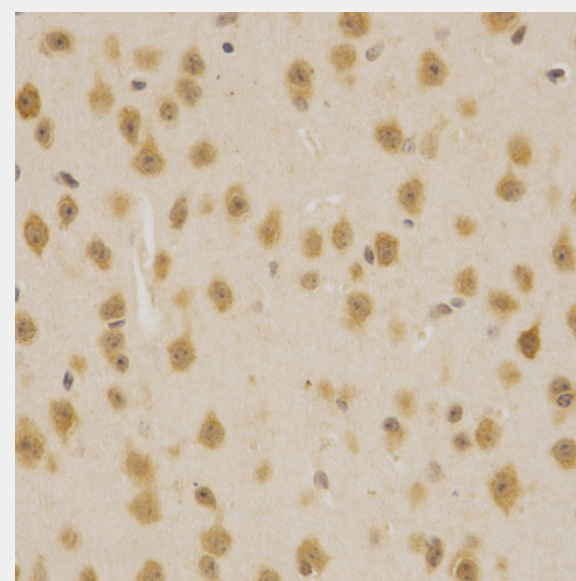
Immunofluorescence analysis of A549 cells using MDM2 antibody. Blue: DAPI for nuclear staining.



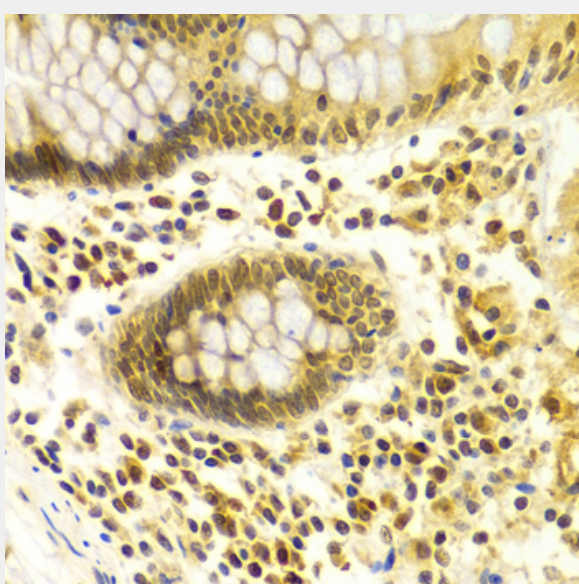
Immunohistochemistry of paraffin-embedded rat kidney using MDM2 Antibody at dilution of 1:200 (40x lens).



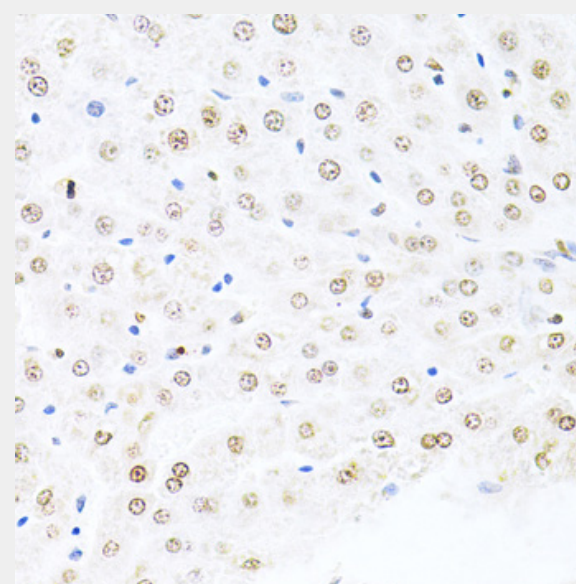
Immunohistochemistry of paraffin-embedded human stomach using MDM2 Antibody at dilution of 1:200 (40x lens).



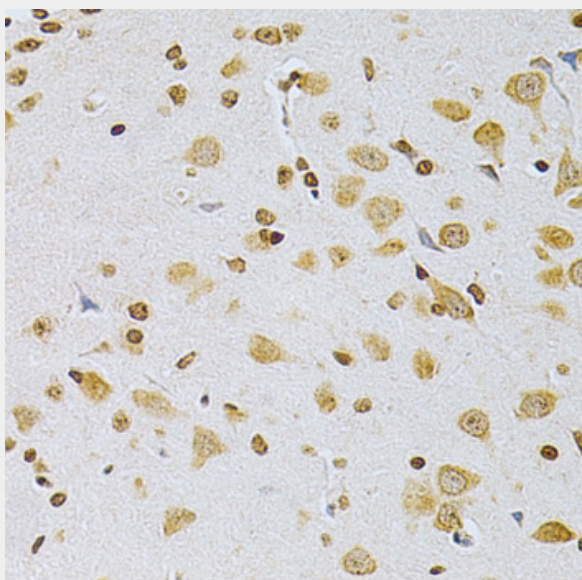
Immunohistochemistry of paraffin-embedded mouse brain using MDM2 Antibody at dilution of 1:200 (40x lens).



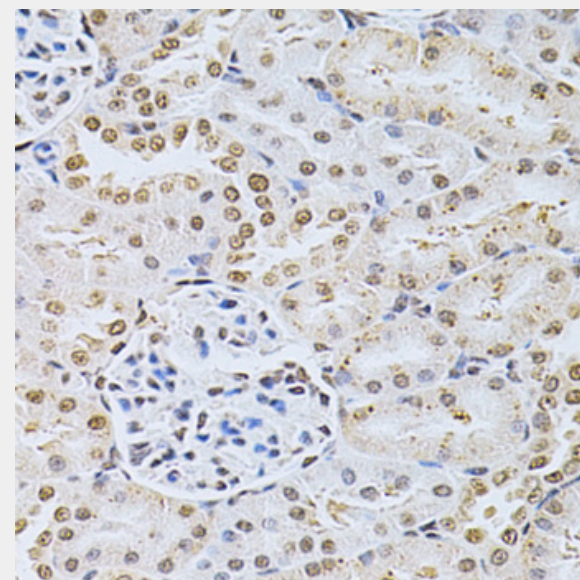
Immunohistochemistry of paraffin-embedded human colon using MDM2 Antibody at dilution of 1:100 (40x lens).



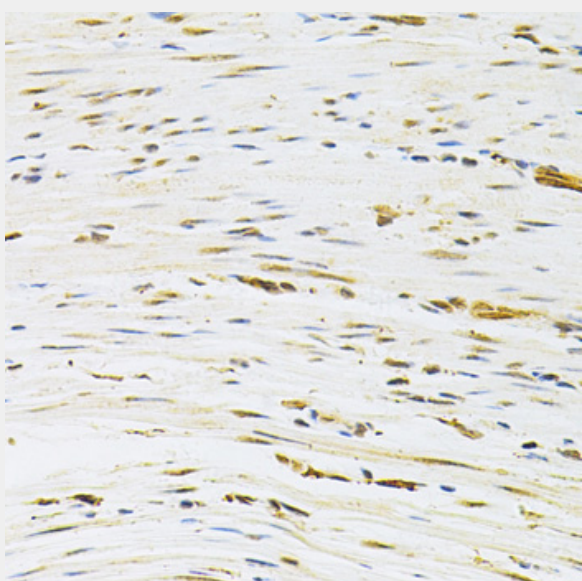
Immunohistochemistry of paraffin-embedded rat liver using MDM2 Antibody at dilution of 1:200 (40x lens).



Immunohistochemistry of paraffin-embedded rat brain using MDM2 Antibody at dilution of 1:200 (40x lens).



Immunohistochemistry of paraffin-embedded rat kidney using MDM2 Antibody at dilution of 1:200 (40x lens).



Immunohistochemistry of paraffin-embedded human colon carcinoma using MDM2 Antibody at dilution of 1:200 (40x lens).

All products are for RESEARCH USE ONLY. Not for diagnostic & therapeutic purposes!