

PCNA Polyclonal Antibody

Catalog No: tcba193



Available Sizes

Size: 50ul

Size: 100ul

Size: 200ul



Specifications

Application:

WB,IHC,IF

Research Area:

Cancer,Stem cells,Cell cycle,Tumor biomarkers,Cell Biology,DNA methylation,DNA Damage/Repair,

Species Reactivity:

Human,Mouse,Rat

Host Species:

Rabbit

Isotype:

IgG

Form:

Liquid

Storage Buffer:

Buffer: PBS with 0.02% sodium azide, 50% glycerol, pH7.3.

Recommended Dilution:

WB 1:500 - 1:2000

IHC 1:50 - 1:200

IF 1:50 - 1:200

Storage Instruction:

Store at -20°C. Avoid freeze / thaw cycles.

Alternative Names:

ATLD2

SwissProt:

P12004

Gene ID:

5111 (human);

Calculated Molecular Weight:

28kDa

Purification:

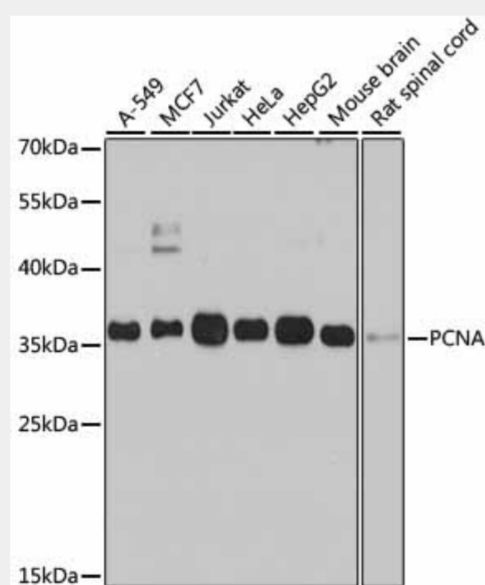
Affinity purification

Cellular Location:

Nucleus,

Product Description

The protein encoded by this gene is found in the nucleus and is a cofactor of DNA polymerase delta. The encoded protein acts as a homotrimer and helps increase the processivity of leading strand synthesis during DNA replication. In response to DNA damage, this protein is ubiquitinated and is involved in the RAD6-dependent DNA repair pathway. Two transcript variants encoding the same protein have been found for this gene. Pseudogenes of this gene have been described on chromosome 4 and on the X chromosome.



Western blot analysis of extracts of various cell lines, using PCNA antibody at 1:1000 dilution.

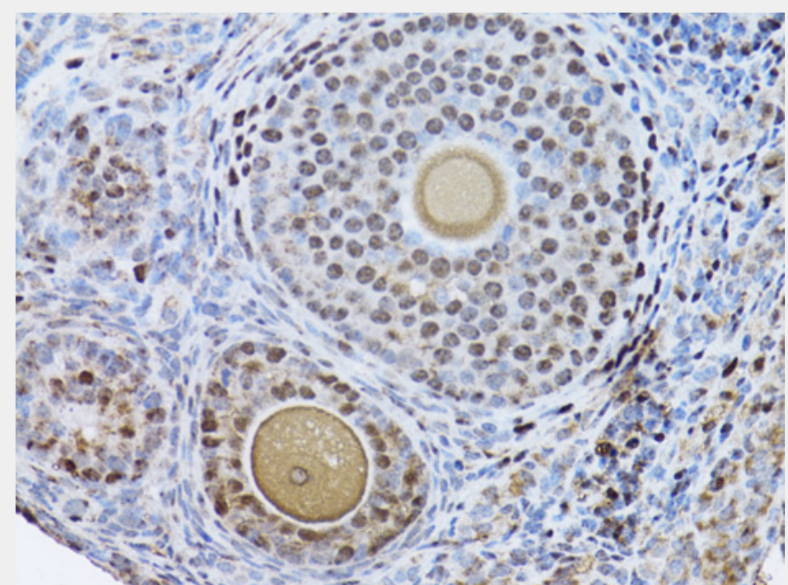
Secondary antibody: HRP Goat Anti-Rabbit IgG (H+L) at 1:10000 dilution.

Lysates/proteins: 25ug per lane.

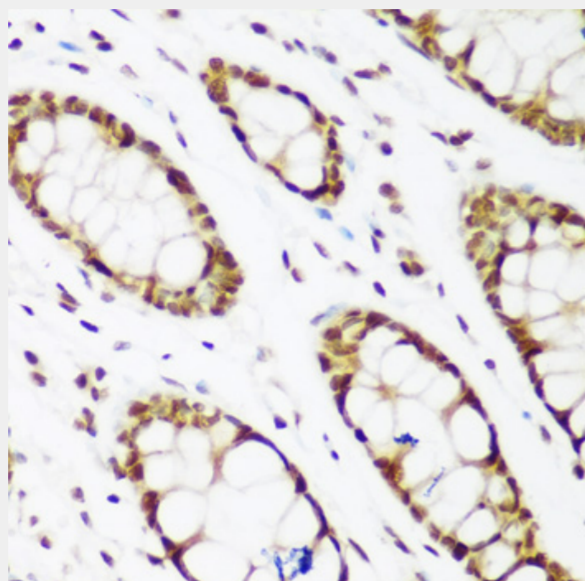
Blocking buffer: 3% nonfat dry milk in TBST.

Detection: ECL Basic Kit.

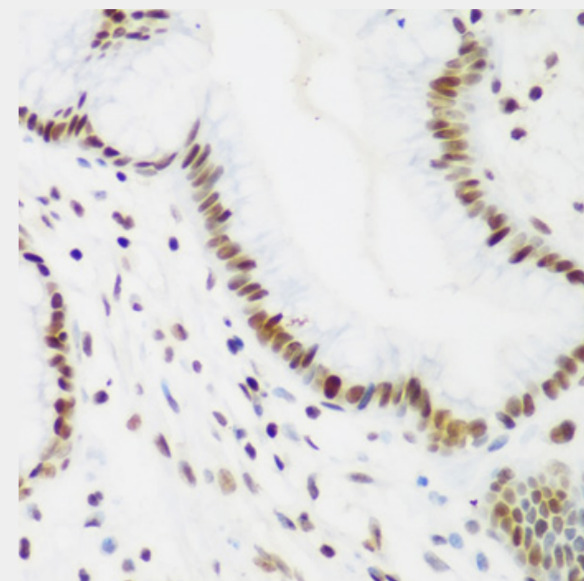
Exposure time: 60s.



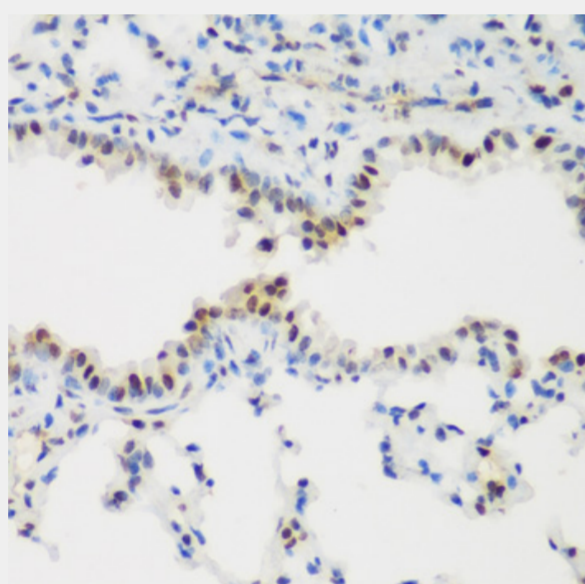
Immunohistochemistry of paraffin-embedded mouse ovary using PCNA antibody at dilution of 1:100 (40x lens).



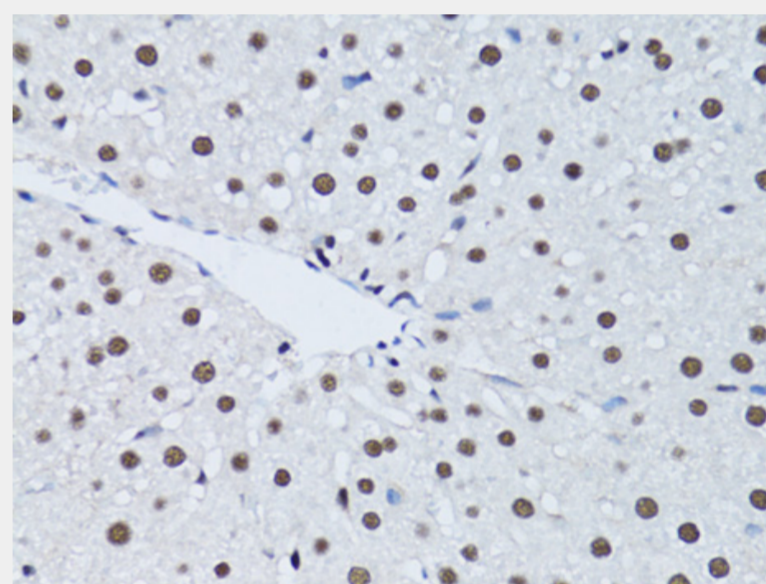
Immunohistochemistry of paraffin-embedded human colon using PCNA antibody at dilution of 1:200 (40x lens).



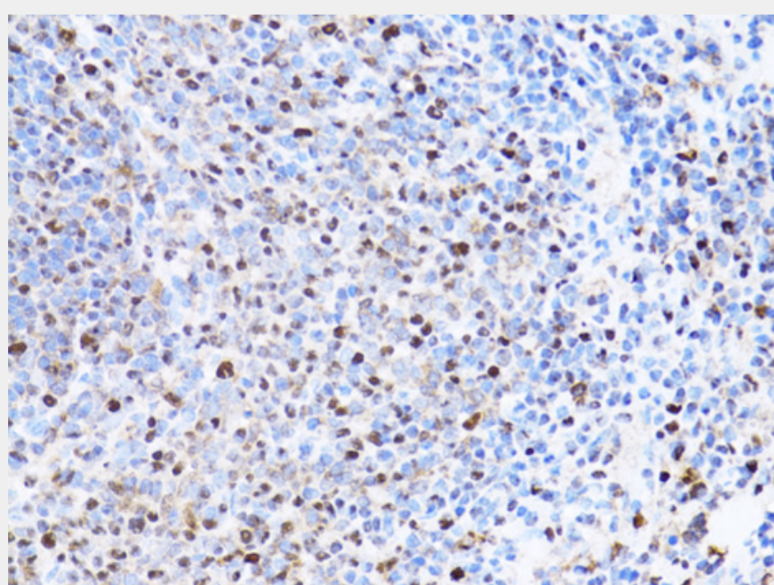
Immunohistochemistry of paraffin-embedded human gastric using PCNA antibody at dilution of 1:200 (40x lens).



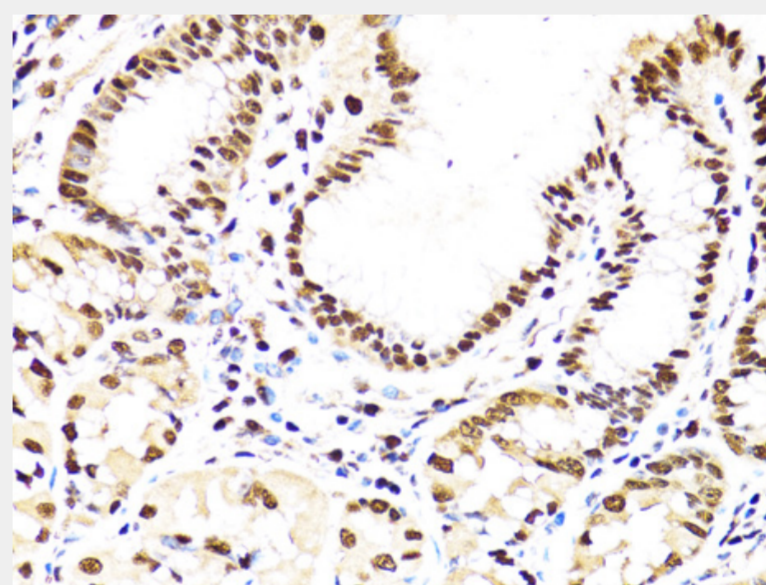
Immunohistochemistry of paraffin-embedded mouse lung using PCNA antibody at dilution of 1:200 (40x lens).



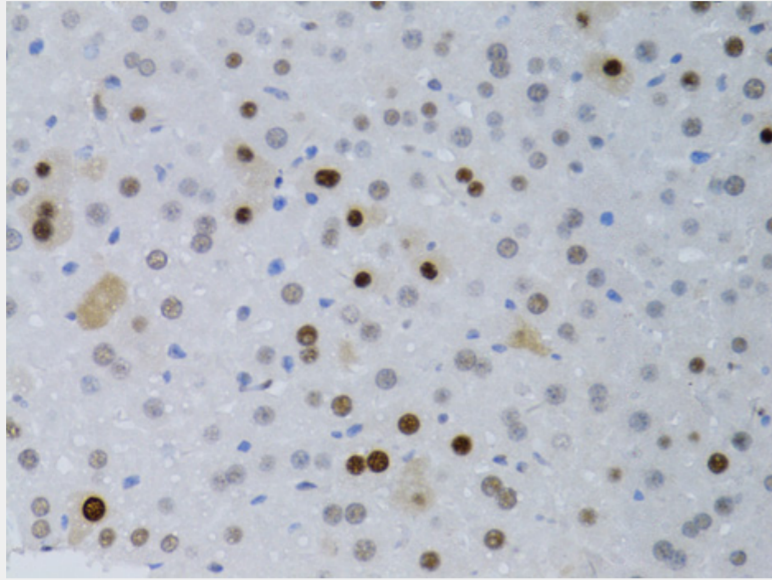
Immunohistochemistry of paraffin-embedded rat liver using PCNA antibody at dilution of 1:100 (40x lens).



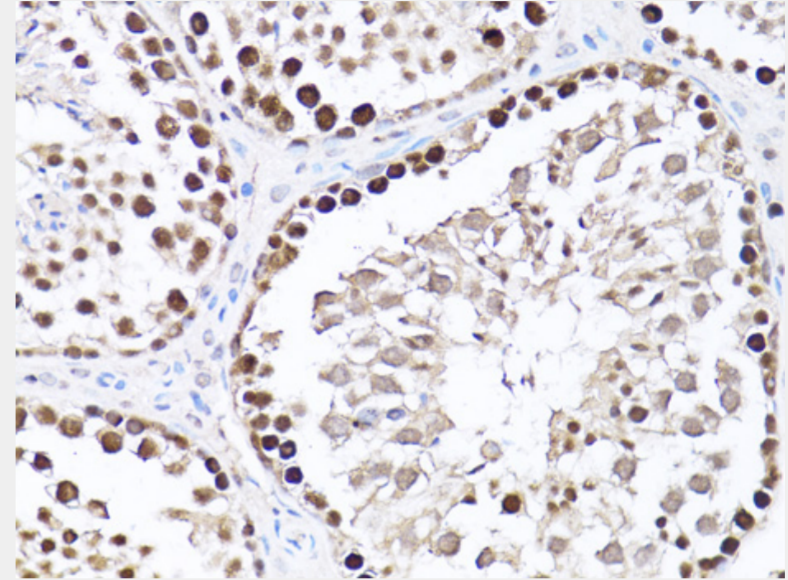
Immunohistochemistry of paraffin-embedded rat spleen using PCNA antibody at dilution of 1:100 (40x lens).



Immunohistochemistry of paraffin-embedded human stomach using PCNA antibody at dilution of 1:100 (40x lens).



Immunohistochemistry of paraffin-embedded mouse liver using PCNA antibody at dilution of 1:100 (40x lens).



Immunohistochemistry of paraffin-embedded mouse testis using PCNA antibody at dilution of 1:100 (40x lens).

All products are for RESEARCH USE ONLY. Not for diagnostic & therapeutic purposes!