

MCL1 Polyclonal Antibody

Catalog No: tcba179



Available Sizes

Size: 50ul

Size: 100ul

Size: 200ul



Specifications

Application:

WB,IHC,IF

Research Area:

Cancer,Apoptosis,Cell Biology,Metabolism,

Species Reactivity:

Human,Mouse

Host Species:

Rabbit

Isotype:

IgG

Form:

Liquid

Storage Buffer:

Buffer: PBS with 0.02% sodium azide, 50% glycerol, pH7.3.

Recommended Dilution:

WB 1:500 - 1:2000

IHC 1:100 - 1:200

IF 1:50 - 1:200

Storage Instruction:

Store at -20°C. Avoid freeze / thaw cycles.

Alternative Names:

bcl2-L-3;BCL2L3;EAT;Mcl-1;MCL1-ES;mcl1/EAT;MCL1L;MCL1S;TM

SwissProt:

Q07820

Gene ID:

4170 (human);

Calculated Molecular Weight:

28kDa/37kDa

Purification:

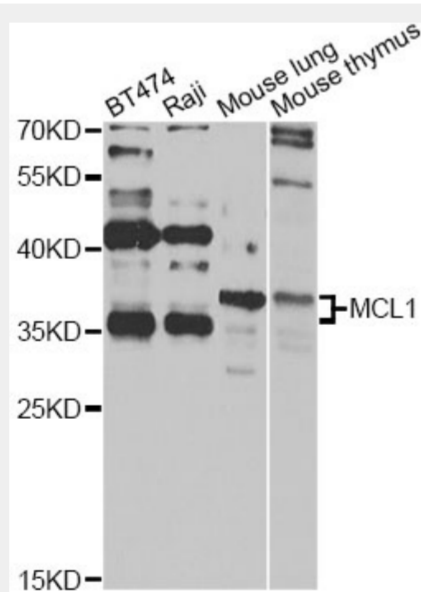
Affinity purification

Cellular Location:

Cytoplasm,Membrane,Mitochondrion,Nucleus,Single-pass membrane protein,nucleoplasm,

Product Description

This gene encodes an anti-apoptotic protein, which is a member of the Bcl-2 family. Alternative splicing results in multiple transcript variants. The longest gene product (isoform 1) enhances cell survival by inhibiting apoptosis while the alternatively spliced shorter gene products (isoform 2 and isoform 3) promote apoptosis and are death-inducing.



Western blot analysis of extracts of various cell lines, using MCL1 antibody at 1:1000 dilution.

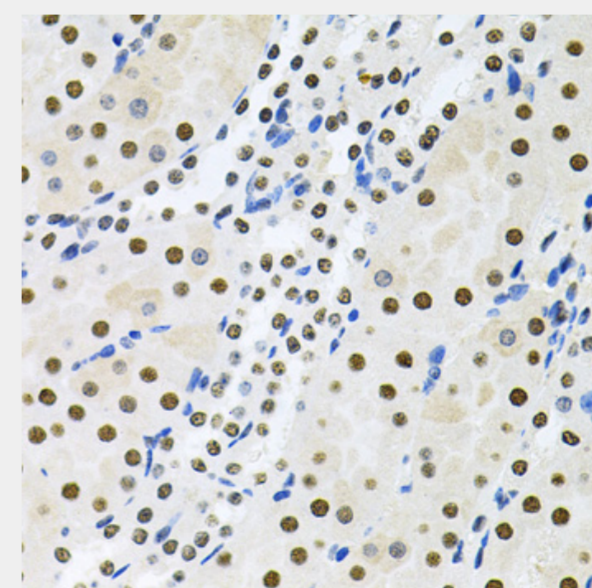
Secondary antibody: HRP Goat Anti-Rabbit IgG (H+L) at 1:10000 dilution.

Lysates/proteins: 25ug per lane.

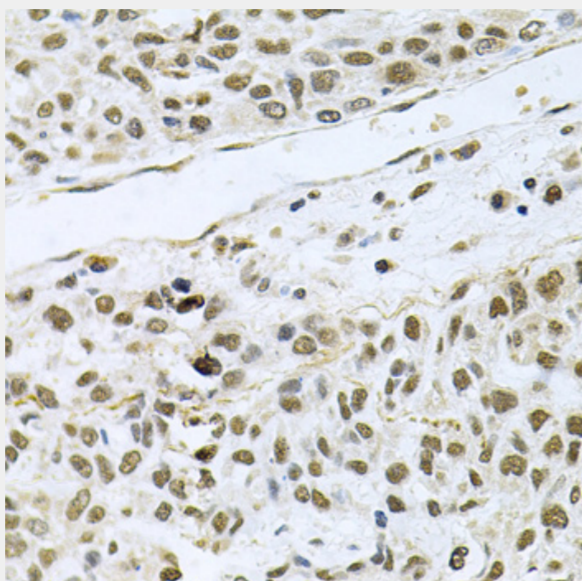
Blocking buffer: 3% nonfat dry milk in TBST.

Detection: ECL Basic Kit.

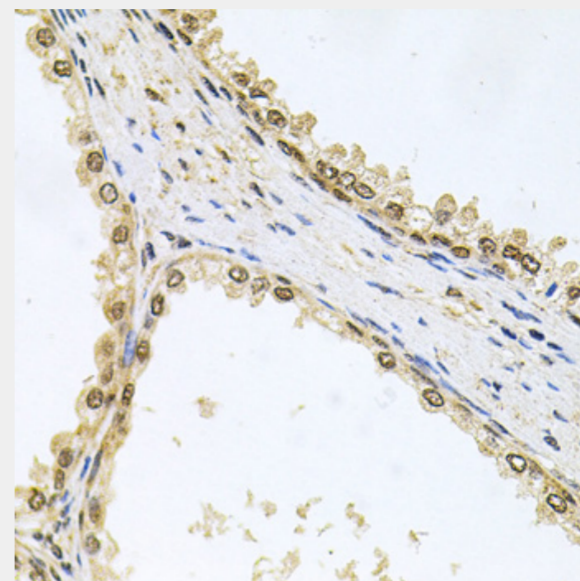
Exposure time: 30s.



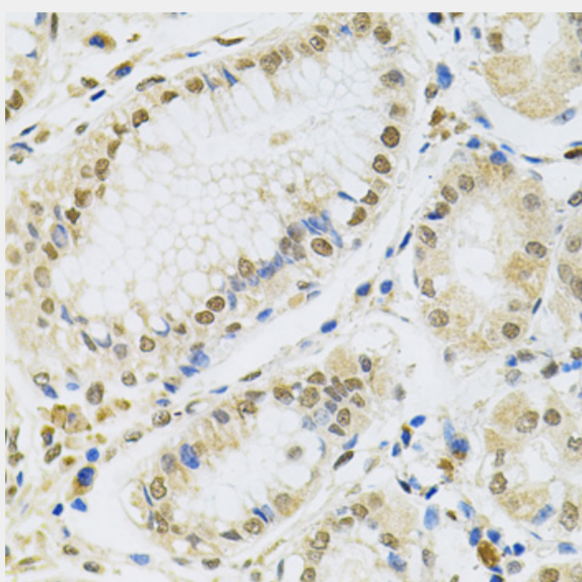
Immunohistochemistry of paraffin-embedded mouse kidney using MCL1 antibody at dilution of 1:100 (40x lens).



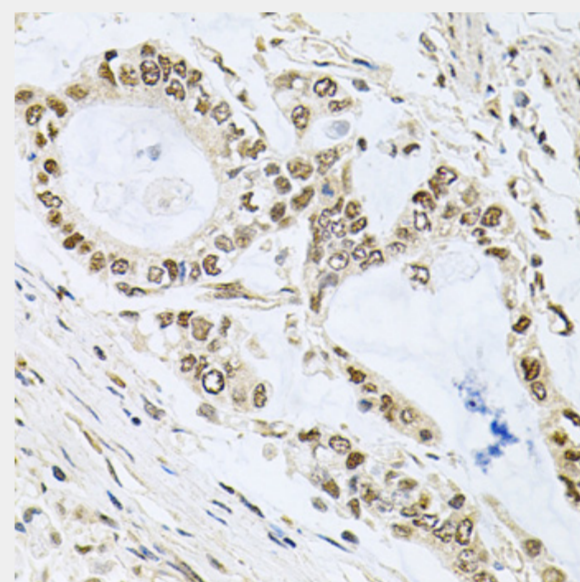
Immunohistochemistry of paraffin-embedded human lung cancer using MCL1 antibody at dilution of 1:100 (40x lens).



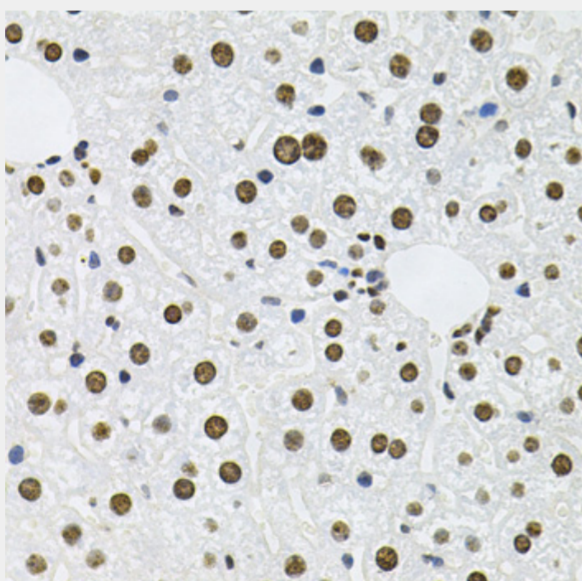
Immunohistochemistry of paraffin-embedded human prostate using MCL1 antibody at dilution of 1:100 (40x lens).



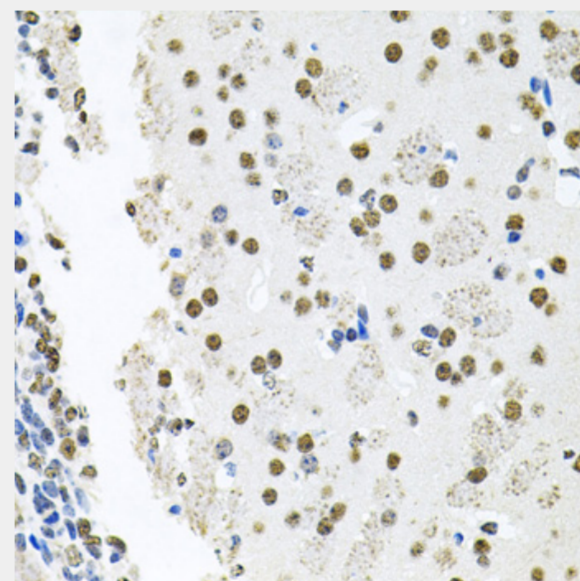
Immunohistochemistry of paraffin-embedded human stomach using MCL1 antibody at dilution of 1:100 (40x lens).



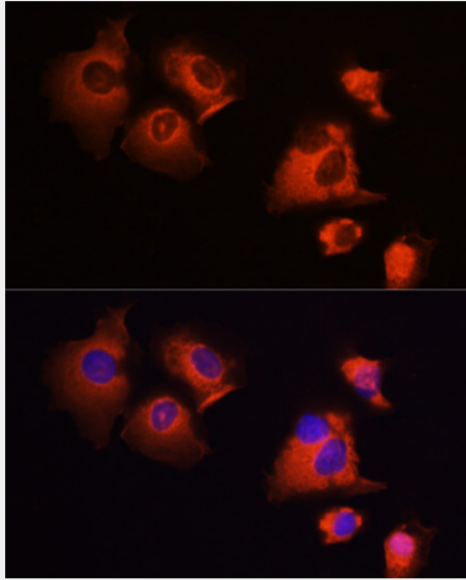
Immunohistochemistry of paraffin-embedded human gastric cancer using MCL1 antibody at dilution of 1:100 (40x lens).



Immunohistochemistry of paraffin-embedded mouse liver using MCL1 antibody at dilution of 1:100 (40x lens).



Immunohistochemistry of paraffin-embedded mouse brain using MCL1 antibody at dilution of 1:100 (40x lens).



Immunofluorescence analysis of A431 cells using MCL1 antibody at dilution of 1:100 (40x lens). Blue: DAPI for nuclear staining.

All products are for RESEARCH USE ONLY. Not for diagnostic & therapeutic purposes!