

KRT20 Polyclonal Antibody

Catalog No: tcba177



Available Sizes

Size: 50ul

Size: 100ul

Size: 200ul



Specifications

Application:

WB,IHC,IF

Research Area:

Cancer,Tumor biomarkers,

Species Reactivity:

Human,Mouse,Rat

Host Species:

Rabbit

Isotype:

IgG

Form:

Liquid

Storage Buffer:

Buffer: PBS with 0.02% sodium azide, 50% glycerol, pH7.3.

Recommended Dilution:

WB 1:500 - 1:2000

IHC 1:50 - 1:200

IF 1:50 - 1:200

Storage Instruction:

Store at -20°C. Avoid freeze / thaw cycles.

Alternative Names:

CD20;CK-20;CK20;K20;KRT21

SwissProt:

P35900

Gene ID:

54474 (human);

Calculated Molecular Weight:

48kDa

Purification:

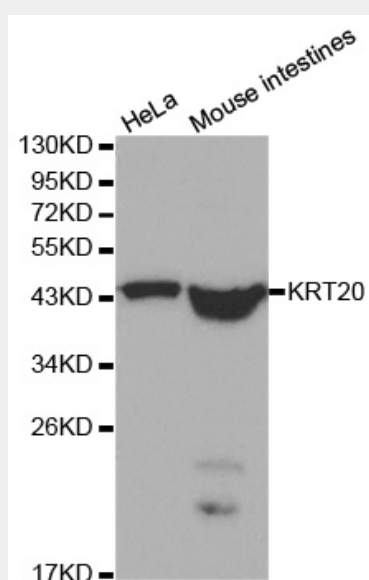
Affinity purification

Cellular Location:

Cytoplasm,

Product Description

The protein encoded by this gene is a member of the keratin family. The keratins are intermediate filament proteins responsible for the structural integrity of epithelial cells and are subdivided into cytokeratins and hair keratins. The type I cytokeratins consist of acidic proteins which are arranged in pairs of heterotypic keratin chains. This cytokeratin is a major cellular protein of mature enterocytes and goblet cells and is specifically expressed in the gastric and intestinal mucosa. The type I cytokeratin genes are clustered in a region of chromosome 17q12-q21.

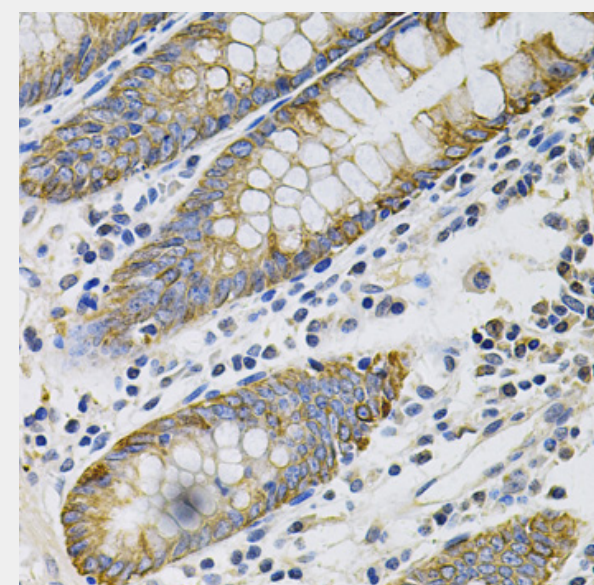


Western blot analysis of extracts of various cell lines, using KRT20 antibody at 1:1000 dilution.

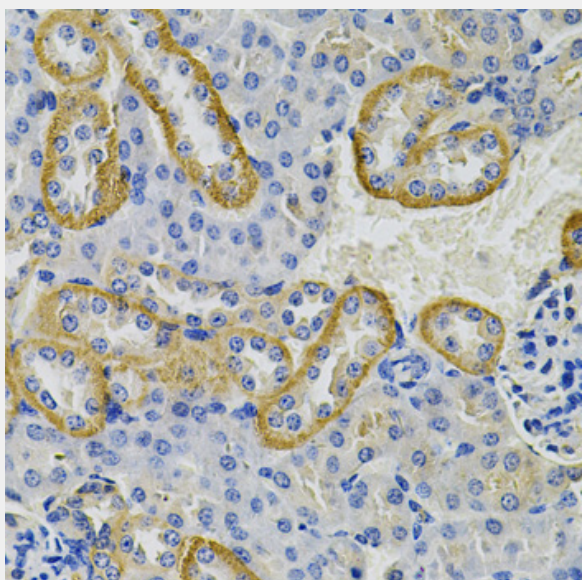
Secondary antibody: HRP Goat Anti-Rabbit IgG (H+L) at 1:10000 dilution.

Lysates/proteins: 25ug per lane.

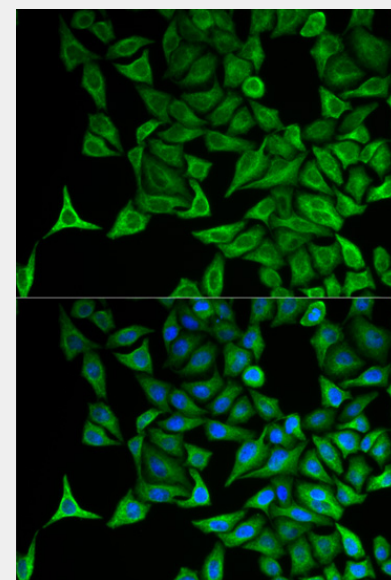
Blocking buffer: 3% nonfat dry milk in TBST.



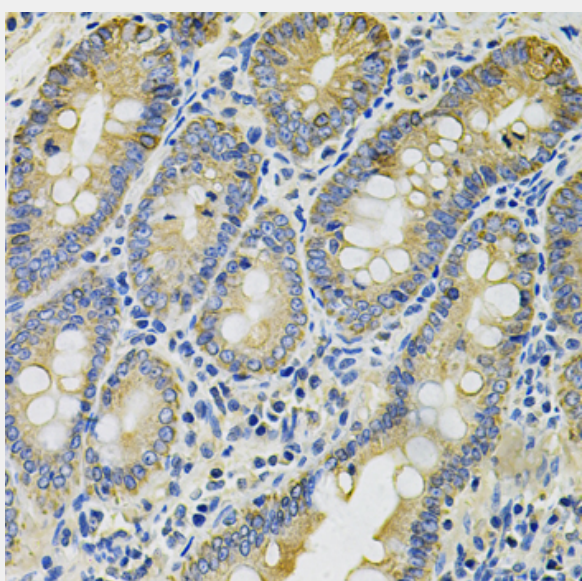
Immunohistochemistry of paraffin-embedded human colon using KRT20 Antibody at dilution of 1:100 (40x lens).



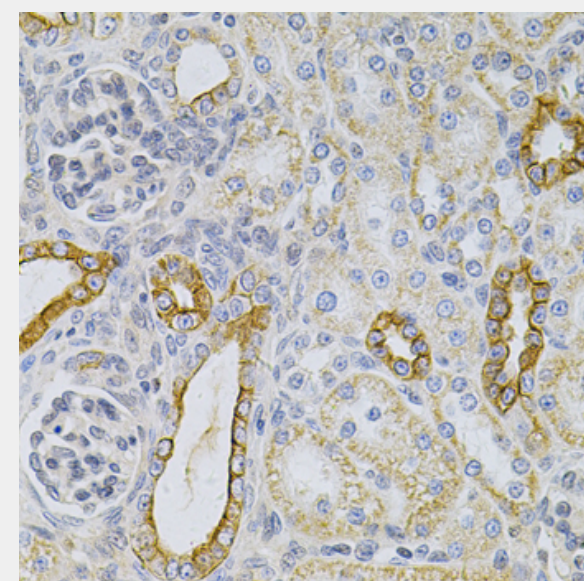
Immunohistochemistry of paraffin-embedded mouse kidney using KRT20 Antibody at dilution of 1:100 (40x lens).



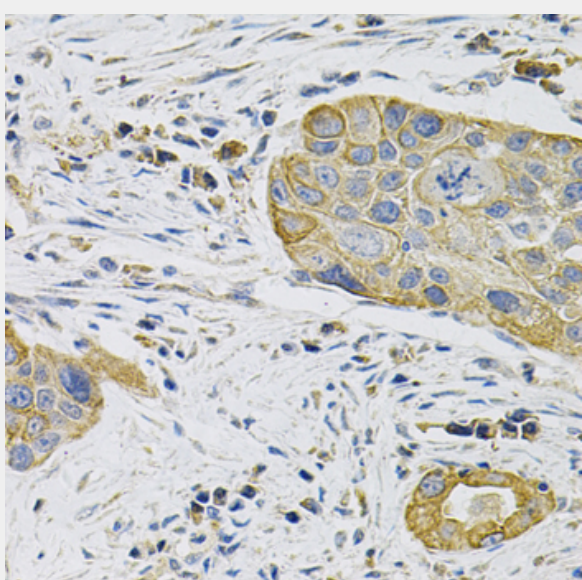
Immunofluorescence analysis of HeLa cells using KRT20 antibody. Blue: DAPI for nuclear staining.



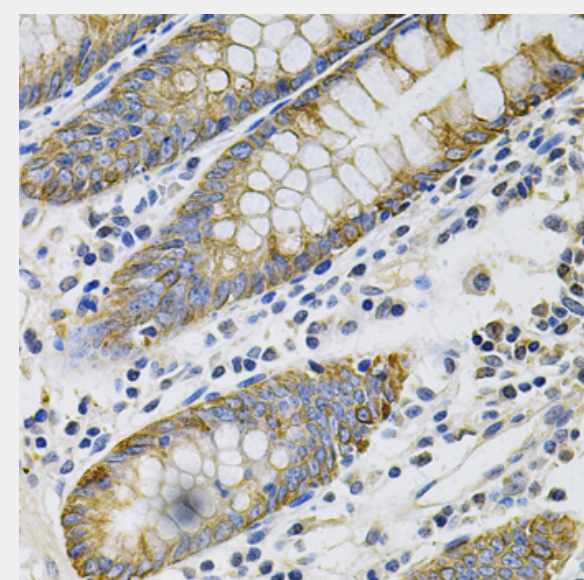
Immunohistochemistry of paraffin-embedded rat intestine using KRT20 Antibody at dilution of 1:100 (40x lens).



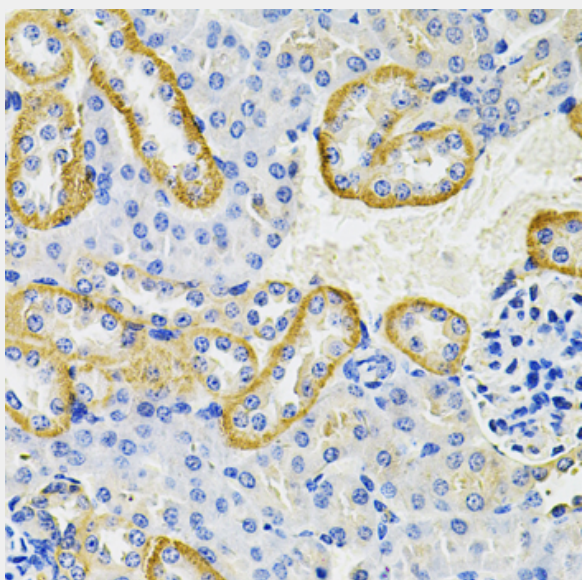
Immunohistochemistry of paraffin-embedded rat kidney using KRT20 Antibody at dilution of 1:100 (40x lens).



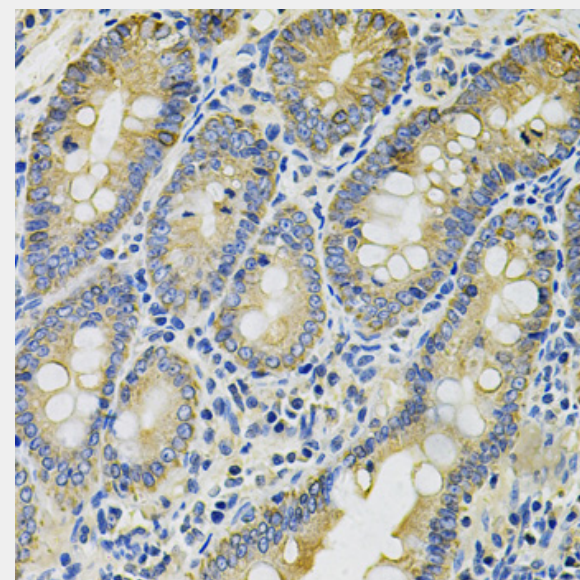
Immunohistochemistry of paraffin-embedded human lung cancer using KRT20 Antibody at dilution of 1:100 (40x lens).



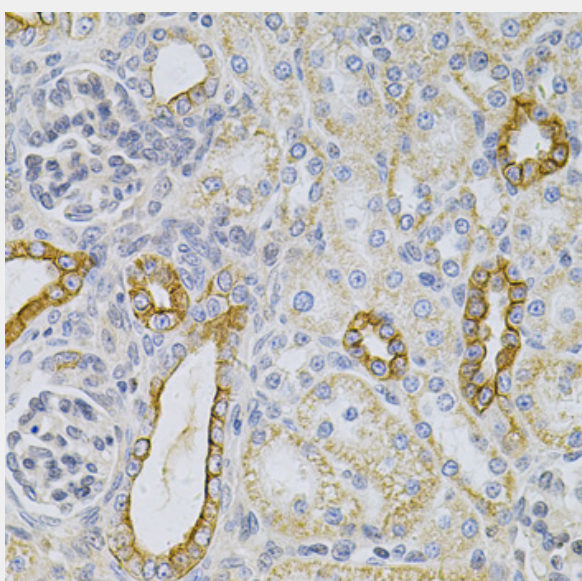
Immunohistochemistry of paraffin-embedded human colon using KRT20 Antibody at dilution of 1:100 (40x lens).



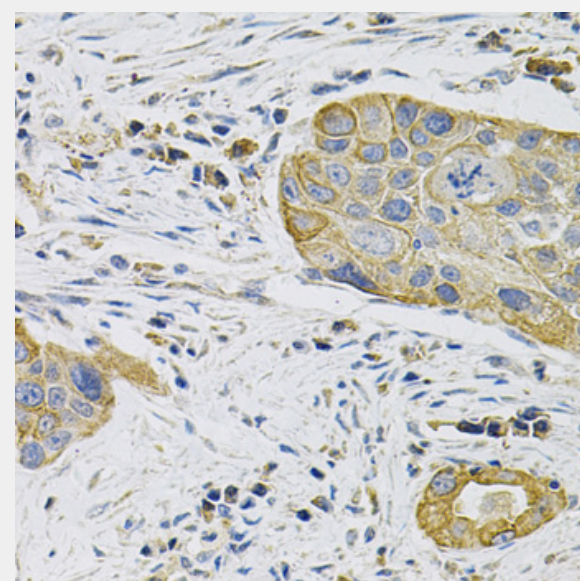
Immunohistochemistry of paraffin-embedded mouse kidney using KRT20 Antibody at dilution of 1:100 (40x lens).



Immunohistochemistry of paraffin-embedded rat intestine using KRT20 Antibody at dilution of 1:100 (40x lens).



Immunohistochemistry of paraffin-embedded rat kidney using KRT20 Antibody at dilution of 1:100 (40x lens).



Immunohistochemistry of paraffin-embedded human lung cancer using KRT20 Antibody at dilution of 1:100 (40x lens).

All products are for RESEARCH USE ONLY. Not for diagnostic & therapeutic purposes!