

Bcl-2 Rabbit Polyclonal Antibody

Catalog No: tcba139



Available Sizes

Size: 50ul

Size: 100ul

Size: 200ul



Specifications

Application:

WB,IHC, IF, IP

Research Area:

Cancer,Stem cells,Apoptosis,Autophagy pathway,AKT pathway,Neuroscience,Cell Biology,Metabolism,Neurodegeneration,PI3K-Akt pathway,

Species Reactivity:

Human,Mouse,Rat

Host Species:

Rabbit

Isotype:

IgG

Form:

Liquid

Storage Buffer:

Buffer: PBS with 0.02% sodium azide, 50% glycerol, pH7.3.

Recommended Dilution:

WB 1:500 - 1:2000

IHC 1:50 - 1:100

IF 1:50 - 1:100

IP 1:50 - 1:200

Storage Instruction:

Store at -20°C. Avoid freeze / thaw cycles.

Alternative Names:

Bcl-2; PPP1R50; BCL2

SwissProt:

P10415

Gene ID:

596 (human);

Calculated Molecular Weight:

22kDa/26kDa

Observed Molecular Weight:

26KDa

Purification:

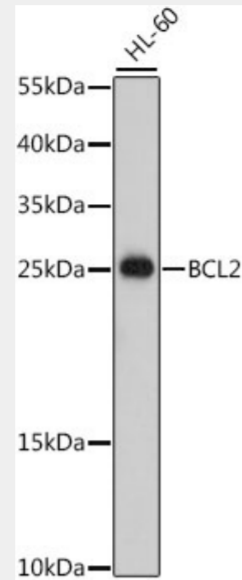
Affinity purification

Cellular Location:

Endoplasmic reticulum membrane, Mitochondrion outer membrane, Nucleus membrane, Single-pass membrane protein,

Product Description

This gene encodes an integral outer mitochondrial membrane protein that blocks the apoptotic death of some cells such as lymphocytes. Constitutive expression of BCL2, such as in the case of translocation of BCL2 to Ig heavy chain locus, is thought to be the cause of follicular lymphoma. Alternative splicing results in multiple transcript variants.



Western blot analysis of extracts of HL-60 cells, using BCL2 antibody at 1:500 dilution.

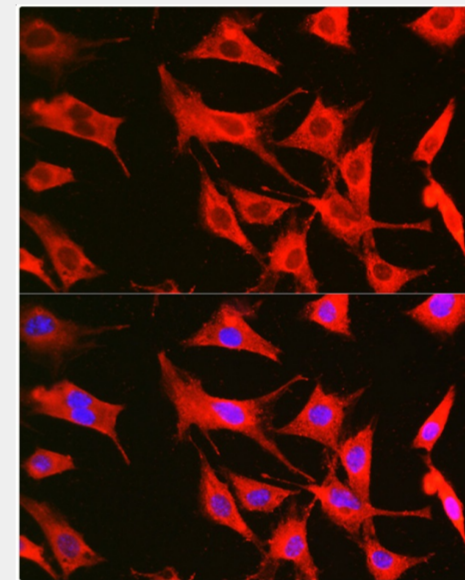
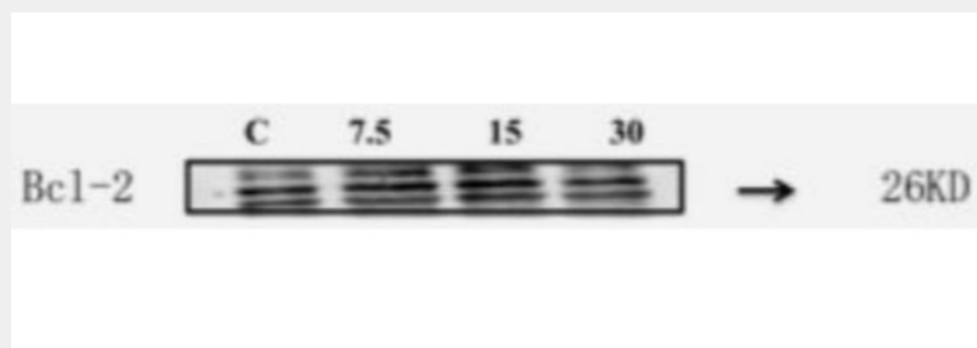
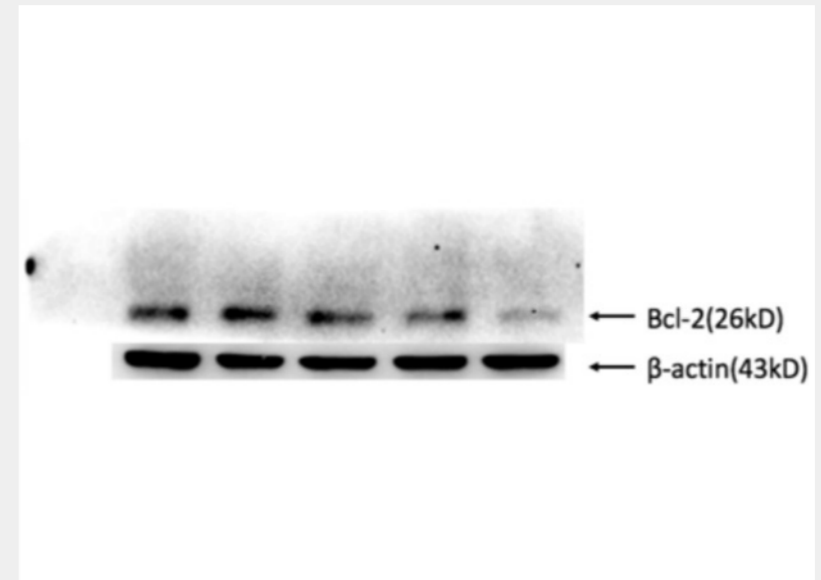
Secondary antibody: HRP Goat Anti-Rabbit IgG (H+L) at 1:10000 dilution.

Lysates/proteins: 25ug per lane.

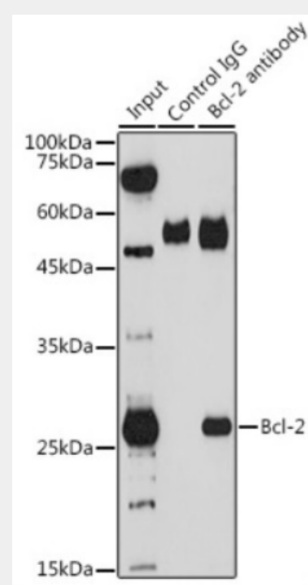
Blocking buffer: 3% nonfat dry milk in TBST.

Detection: ECL Basic Kit.

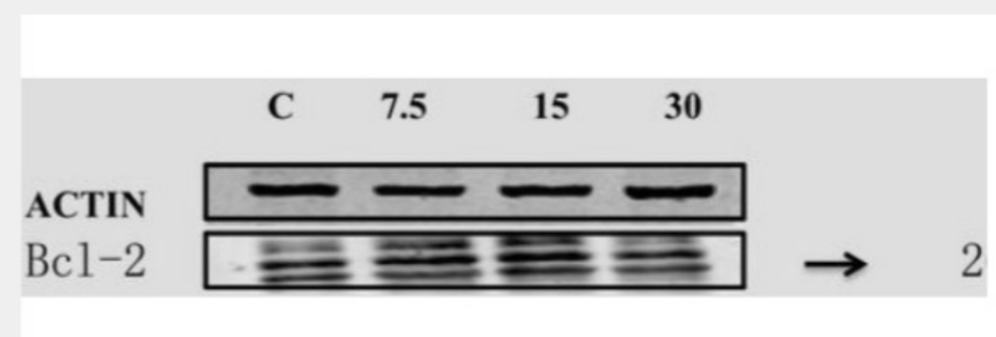
Exposure time: 90s.

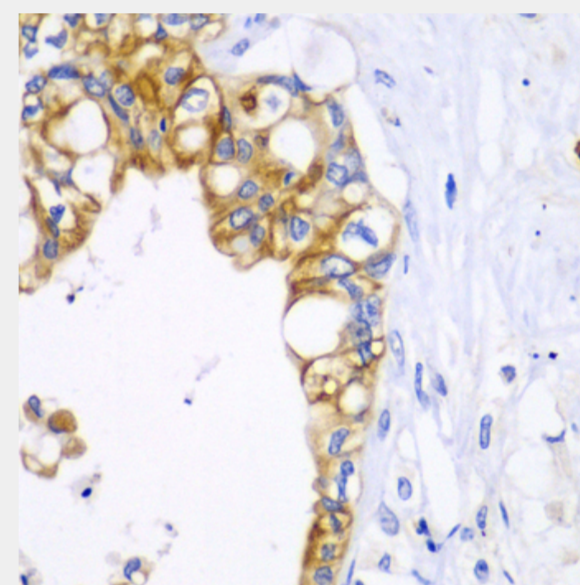
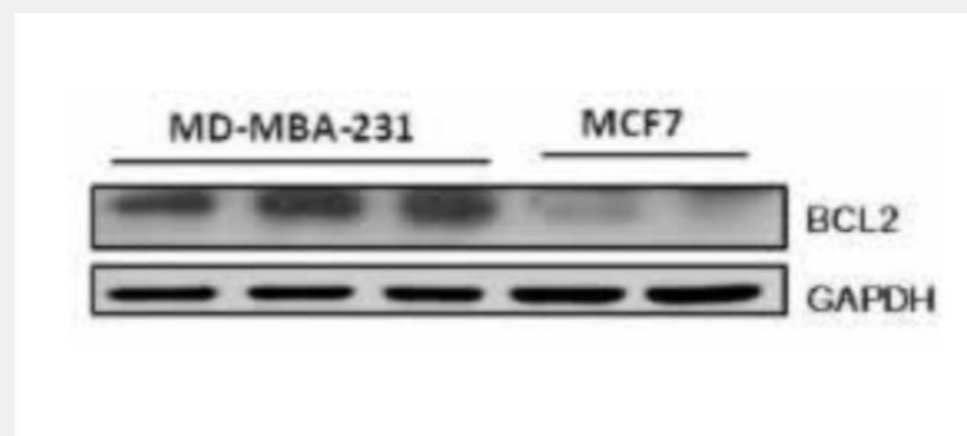
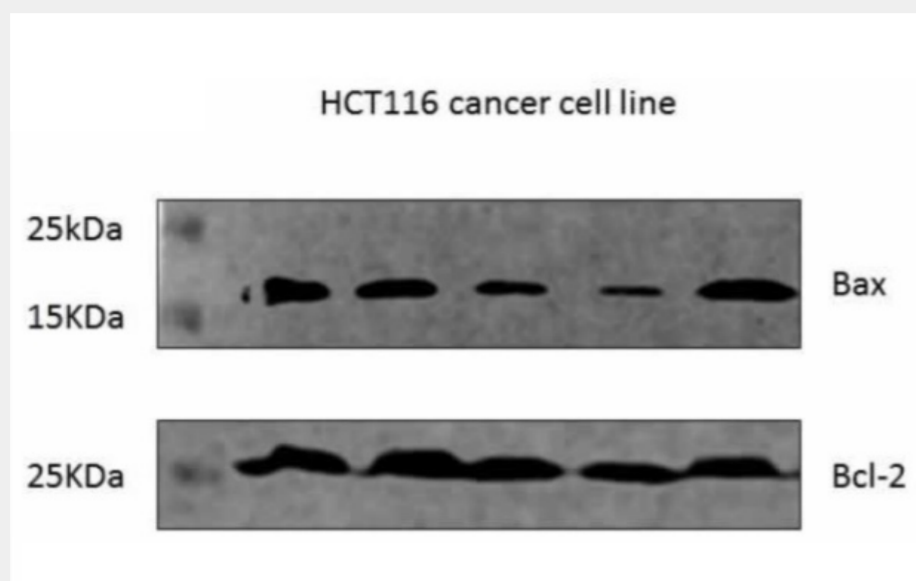


Immunofluorescence analysis of BALB-3T3 cells using Bcl-2 Rabbit pAb (tcba139) at dilution of 1:100 (40x lens). Blue: DAPI for nuclear staining.

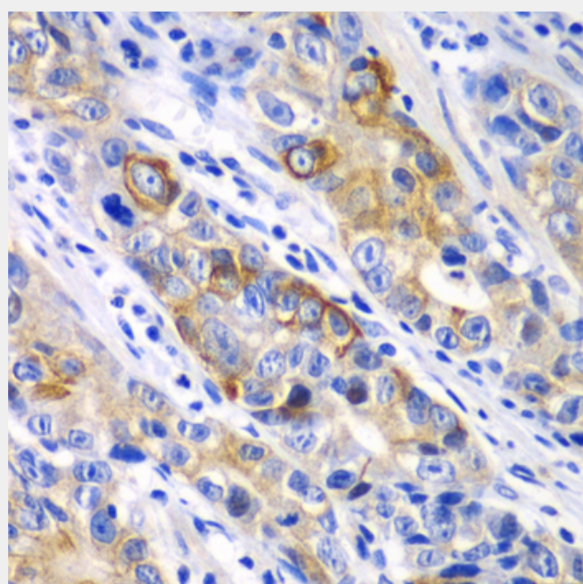


Immunoprecipitation analysis of 200ug extracts of THP-1 cells using 3ug Bcl-2 antibody (tcba139). Western blot was performed from the immunoprecipitate using Bcl-2 antibody (tcba139) at a dilution of 1:1000.

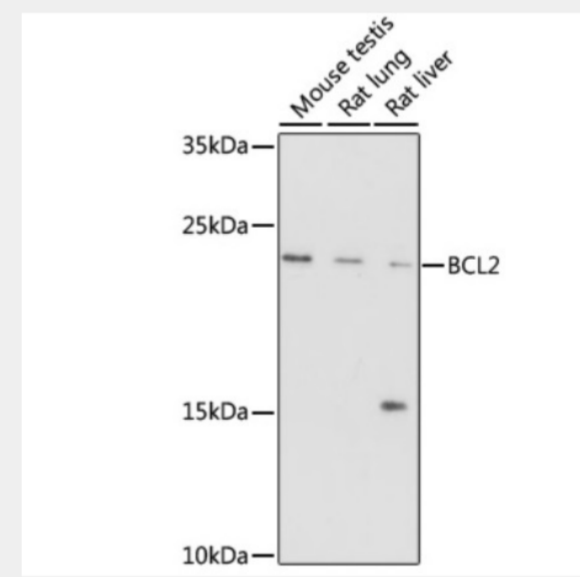




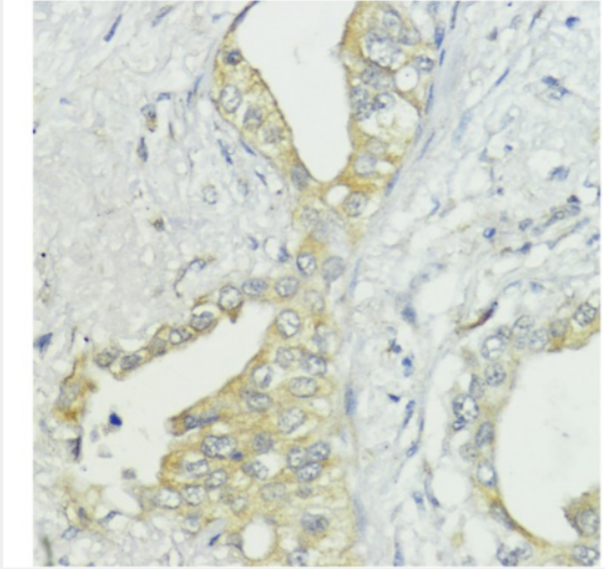
Immunohistochemistry of paraffin-embedded human liver cancer using BCL2 antibody at dilution of 1:100 (40x lens).



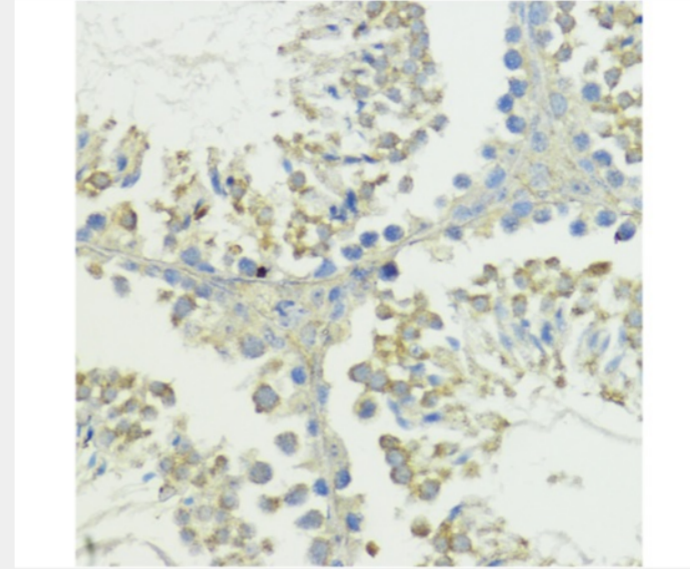
Immunohistochemistry of paraffin-embedded human gastric cancer using BCL2 antibody at dilution of 1:100 (40x lens).



Western blot analysis of extracts of various cells, using BCL2 antibody (tcba139) at 1:1000 dilution. Secondary antibody: HRP Goat Anti-Rabbit IgG (H+L) (tcba139) at 1:10000 dilution. Lysates/proteins: 25ug per lane. Blocking buffer: 3% nonfat dry milk in TBST. Detection: ECL Enhanced Kit (RM00021). Exposure time: 3min.



Immunohistochemistry of paraffin-embedded human lung cancer using BCL2 antibody (tcba139) at dilution of 1:100 (40x lens).



Immunohistochemistry of paraffin-embedded rat testis using BCL2 antibody (tcba139) at dilution of 1:100 (40x lens).

All products are for RESEARCH USE ONLY. Not for diagnostic & therapeutic purposes!