

Recombinant WEEV E2 GP (E3E2) (mammalian)

Catalog No: tcip3024



Available Sizes

Size: 100μg



Specifications

Application:

ELISA, WB

Research Area:

Virology

Form:

Frozen Liquid

Concentration:

supplied in PBS (supplemented with glycerol, arginine and glutamic acid) at a concentration of 0.675 mg/mL. (lot Dependent)

Purity / Grade:

Column chromatography

Storage Instruction:

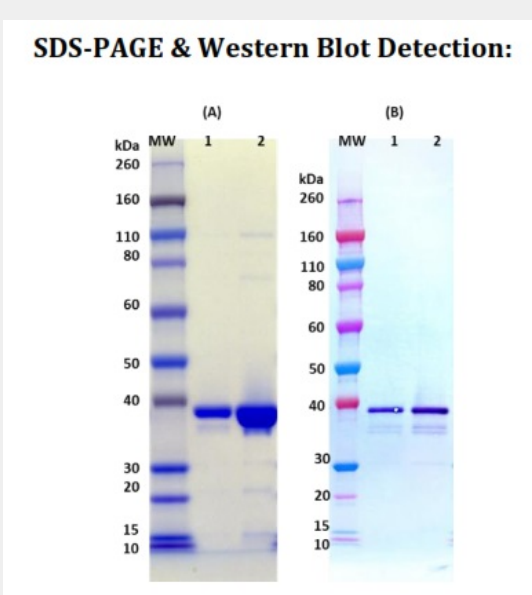
2-3 weeks at -20°C, -80°C long term

Relevance:

Recombinant glycoprotein provides a means as a control protein for immunoassays and a tool to enhance Alphavirus research.

Product Description

Recombinant, His-tagged WEEV E3E2 glycoprotein produced in mammalian cells and purified by FPLC.



The theoretical molecular weight of the protein is ~35 kDa. (A) SDS-PAGE and stain demonstrating 1 ug and 5 ug (lanes 1-2) of EBOV VP40 protein under denaturing and reducing conditions. MW denotes Novex Sharp pre-stained protein markers. (B) Western blot detection of EBOV VP40 at 50 ng and 100 ng (lanes 1-2). EBOV VP40 was detected using Taiclone's polyclonal antibody at 50 ng/mL (Cat. #tcia133) and anti-rabbit IgG-HRP conjugate,followed by TMB membrane substrate. SDS-PAGE & Western Blot: Quality control testing shows a prominent protein band below 40 kDa (VP40).

ELISA Data:

EBOV VP40 ng/well	OD 650 nm
800.00	3.839
400.00	3.688
200.00	3.765
100.00	3.686
50.00	3.570
25.00	3.315
12.50	2.987
6.25	2.345
3.13	1.463
1.56	0.698
0.78	0.329
0.39	0.185

Plate was coated with EBOV VP40 starting at 800 ng/well, serially diluted in DPBS. Washed plate was detected using one dilution of a positive control serum, followed with anti-IgG HRP conjugate and TMB substrate. OD 650 is reported.

All products are for RESEARCH USE ONLY. Not for diagnostic & therapeutic purposes!