

S. aureus Recombinant LukF-PV (tag-free)

Catalog No: tcip3020



Available Sizes

Size: 100µg



Specifications

Application:

ELISA, WB, Cytotoxicity

Research Area:

Virology

Form:

Frozen Liquid

Concentration:

Supplied in sodium phosphate buffer containing sodium chloride and 5% glycerol, at a concentration of 1.624 mg/mL.

Recommended Dilution:

ELISA: Assay-dependent dilution. ; WB: Assay-dependent dilution; internal QC demonstrates detection of 100 ng of LukF-PV protein when detected with antiPVL LukF polyclonal antibody (cat# tcia158) in Western blotting. PVL Cytotoxicity assay: Cytotoxicity can be detected in human neutrophils when used in combination with LukS-PV (cat# tcip3019) in a concentration range of 1-100 nM.

Purity / Grade:

Column chromatography

Storage Instruction:

2-3 weeks at -20°C, -80°C long term

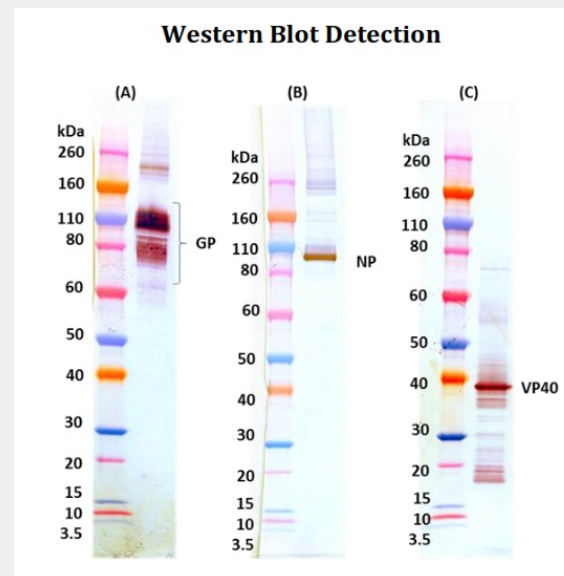
Relevance:

This protein may be used in functional PVL toxicity assays in combination with LukS-PV, or as a control protein in ELISA assays or Western blotting when detecting LukF in PVL (+) strains of S. aureus.

Product Description

Purified, recombinant *Staphylococcus aureus* Panton-Valentine Leukocidin (PVL) F subunit (LukF-PV). ;

The theoretical molecular weight of the protein is 34,580 Daltons.



Western Blot was used to confirm the presence of EBOV-specific GP, NP and VP40 in the VLP. VLP sample was heat-denatured under reducing condition and loaded at 1 µg/lane. (A) GP was detected as a broadly-diffused band 60110 kDa using 10 ng/mL of anti-EBOV GP rabbit Pab (Taiclone's cat# tcia135) (B) NP was detected as a single sharp band at ~90 kDa using 100 ng/mL of anti-EBOV NP rabbit Pab (Taiclone's cat# tcia134) (C) VP40 was detected as a single sharp band at ~40 kDa using 50 ng/mL of anti-EBOV VP40 rabbit Pab (Taiclone' cat# tcia133)

All products are for RESEARCH USE ONLY. Not for diagnostic & therapeutic purposes!