

EBOV Delta Peptide

Catalog No: tcip3012



Available Sizes

Size: 100µg



Specifications

Application:

WB, ELISA

Research Area:

Virology

Form:

Frozen Liquid

Concentration:

Supplied in PBS at a concentration of 0.910 mg/mL (Lot dependent)

Purity / Grade:

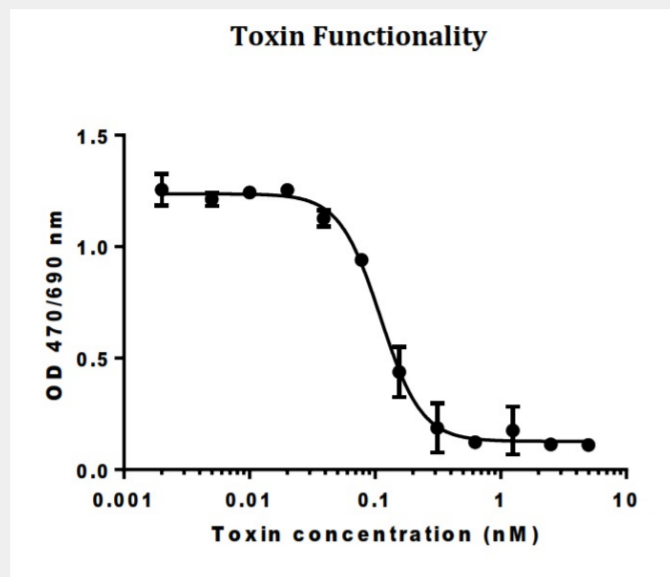
Column chromatography

Storage Instruction:

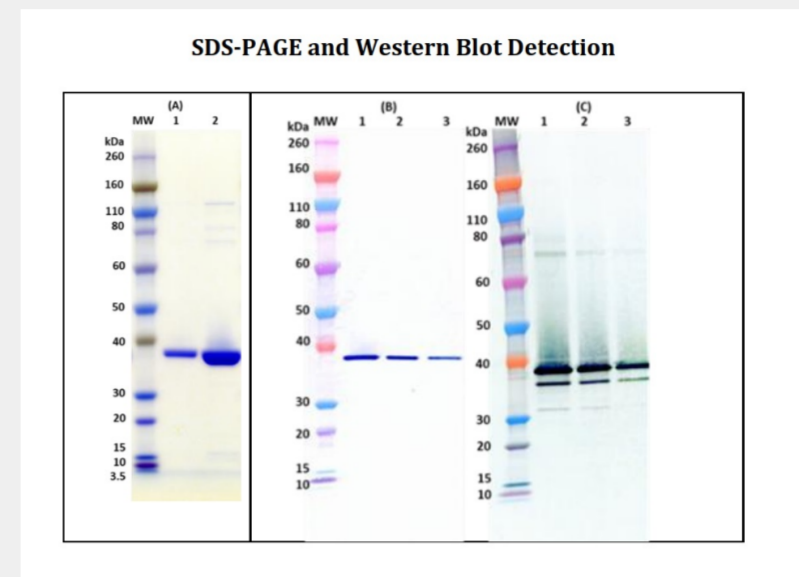
2-3 weeks at -20°C, -80°C long term

Product Description

Purified Ebolavirus Delta Peptide.



Human promyelocytic leukemia cell line HL60 was differentiated into neutrophils by treatment with DMSO. Neutrophils were incubated with serial dilutions of LukA-LukB for 3 hours at 37°C with 5% CO₂ and 95% humidity.; Cellular viability was determined by adding XTT and incubating for additional 16 hours. Cells were centrifuged and the OD determined in the supernatants at 470/690 nm. EC 50 value was determined to be 0.111 nM.



SDS-PAGE (Panel A); 1 µg and 5 µg of LukA-LukB were loaded under denaturing and reducing condition (lanes 1 and 2). MW denotes Novex Shar prestained protein markers. ; Western Blots (Panels B and C); Heat-denatured and reduced LukA-LukB was loaded at 200 ng, 100 ng and 50 ng (lanes 1, 2 and 3). In Panel (B), LukA was detected using 0.5 µg/mL of rabbit anti- LukA polyclonal antibody (Cat# tcia162). In Panel (C), LukB was detected using 0.5 µg/mL of rabbit anti-LukB polyclonal antibody (Cat# tcia163). An anti-rabbit IgG-HRP conjugate was then added, followed by TMB Membrane Substrate.

All products are for RESEARCH USE ONLY. Not for diagnostic & therapeutic purposes!