

# Recombinant EBOV GPDTM (mammalian)

Catalog No: tcip3002



## Available Sizes

**Size:** 100µg



## Specifications

### Application:

ELISA, WB

### Research Area:

Virology

### Form:

Frozen Liquid

### Concentration:

supplied in PBS at a concentration of 3.831 mg/mL

### Recommended Dilution:

Quality control testing demonstrates strong detection of GP null under reduced conditions down to 50 ng when using Taiclone's monoclonal antibody 4F3 (cat# tcia113) at 0.5 g/mL

### Purity / Grade:

Column chromatography

### Storage Instruction:

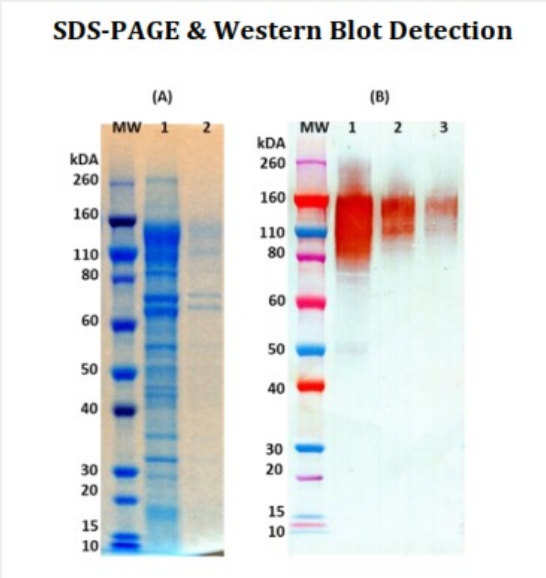
2-3 weeks at -20°C, -80°C long term

### Relevance:

Recombinant glycoprotein provides a means for antibody development, control protein for testing, and a tool to enhance research.

## Product Description

Mature, recombinant, HA-tagged ebolavirus glycoprotein minus the transmembrane domain (EBOV rGPΔTM) is supplied as purified protein. EBOV rGPΔTM is produced in mammalian cells and is purified by FPLC.



The theoretical molecular weight of the protein is ~70.5 kDa including the HA-tag, without glycosylation. Because of the highly glycosylated nature of this protein, migration in an SDSPAGE gel is slowed resulting in broad, diffuse bands representing differing glycosylation forms. (A) SDS-PAGE and stain demonstrating 5 ug, (lane 1, 2 respectively) of EBOV rGPΔTM HA-Tag protein under denaturing and reducing conditions. MW denotes Novex Sharp prestained protein markers. (B) Western blot detection of EBOV rGPΔTM at 500 ng, 100 ng, and 50 ng (lanes 1-3). EBOV rGPΔTM was detected using IBT’s monoclonal antibody 4F3 at 0.5 ug/mL and anti-mouse IgG-HRP conjugate, followed by TMB substrate.

ELISA Data	
EBOV GPΔTM ng/well	OD 650 nm
800.00	3.606
400.00	3.669
200.00	3.684
100.00	3.693
50.00	3.509
25.00	3.549
12.50	2.844
6.25	2.127
3.13	1.322
1.56	0.688
0.78	0.448
0.39	0.234
0.00	0.084

Plate was coated with EBOV rGPΔTM starting at 800 ng/well, serially diluted in DPBS. Washed plate was detected using one dilution of a positive control serum, followed with anti-IgG HRP conjugate and TMBsubstrate. OD 650 is reported.

All products are for RESEARCH USE ONLY. Not for diagnostic & therapeutic purposes!