

Mouse anti-EBOV VP40 Monoclonal Antibody (3G5)

Catalog No: tcia110



Available Sizes

Size: 100µg



Specifications

Application:

ELISA, WB

Research Area:

Virology

Host Species:

Mouse

Immunogen / Amino acids:

EBOV VP40 protein

Conjugation:

Unconjugated

Clonality:

monoclonal

Clones:

monoclonal

Isotype:

IgG1

Form:

Frozen Liquid, Protein A/G Purified

Concentration:

Supplied in buffer containing Histidine, sodium chloride and sucrose at a concentration of 0.718 mg/mL. No preservative is added.

Recommended Dilution:

ELISA: Assay-dependent dilution Western Blot: Assay-dependent dilution. Internal QC demonstrates good detection when using 3G5 mAb at a use dilution of 10 ng/mL.

Storage Instruction:

2-3 weeks +4°C, -20°C long term. Avoid multiple freeze thaws.

Relevance:

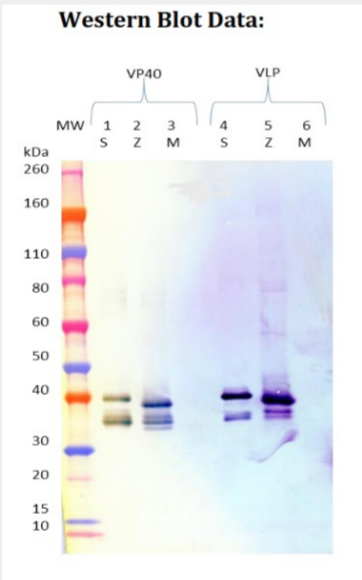
The antibody can be used for detection of EBOV VP40.

Purification:

Protein A/G

Product Description

Protein G purified mouse monoclonal antibody reactive to EBOV VP40. The antibody detects VP40 in virus-like particles (VLP) and recombinant protein.



Western blots were detected under reduced conditions with anti-EBOV VP40 mAb 3G5 at 10 ng/mL and visualized using an anti-mouse IgG-HRP conjugate and TMB membrane substrate. rVP40 was loaded at 100 ng per lane. SUDV rVP40 and EBOV rVP40 are visualized in lanes 1 and 2, respectively. VLP was loaded at 1 µg per lane. VP40 is detected in SUDV VLP (lane 4) and EBOV VLP (lane 5).

ELISA Data:

3G5 µg/mL	rVP40 (1 µg/mL)			VLP (10 µg/mL)		
	EBOV	SUDV	MMARV	EBOV	SUDV	MMARV
10.0000	3.801	3.639	0.079	3.609	2.972	0.069
3.1623	3.677	3.635	0.066	3.522	2.949	0.063
1.0000	3.690	3.498	0.056	3.493	2.758	0.056
0.3162	3.585	3.496	0.052	3.233	2.378	0.083
0.1000	3.302	3.185	0.051	2.851	1.572	0.061
0.0316	2.766	2.622	0.049	2.073	0.767	0.056
0.0100	1.836	1.639	0.062	1.133	0.327	0.053
0.0032	0.901	0.791	0.053	0.501	0.144	0.051
0.0010	0.359	0.312	0.051	0.206	0.079	0.066
0.0003	0.158	0.142	0.051	0.104	0.060	0.044
0.0001	0.148	0.089	0.056	0.067	0.057	0.058
OD 650 nm						

rVP40 proteins and VLPs were diluted to 1 and 10 µg/mL, respectively in PBS for plate coating. Anti-EBOV VP40 antibody 3G5 was serially diluted semi-log dilutions from 10 µg/mL and incubated on the coated plates. Washed plates were detected with anti-mouse IgG-HRP conjugate and TMB substrate. OD650 is reported above

All products are for RESEARCH USE ONLY. Not for diagnostic & therapeutic purposes!