

Biotinylated Anti-Rabbit IgG Fc goat monoclonal antibody [RMG02]

Catalog No: tcra319b



Available Sizes

Size: 50ug



Specifications

Application:

WB (nonreduced), IP, ICC, IHC, FC, ELISA

Species Reactivity:

Rabbit

Host Species:

Goat

Immunogen / Amino acids:

Rabbit IgG

Conjugation:

Biotin

Clonality:

Monoclonal

Clones:

RMG02

Isotype:

Goat IgG

Form:

Liquid

Storage Buffer:

50% Glycerol/PBS with 1% BSA and 0.09% sodium azide

Concentration:

1 mg/mL

Recommended Dilution:

ELISA: 0.01 ug/mL – 0.5 ug/mL; Immunocytochemistry (ICC): 0.5 ug/mL-2 ug/mL; Immunohistochemistry (IHC): 0.5 ug/mL-2 ug/mL; Western Blot (WB) (nonreduced): 0.1 ug/mL-0.5 ug/mL.

Storage Instruction:

store at -20°C ; avoid repeated thawing/freezing

SwissProt:

N/A

Purification:

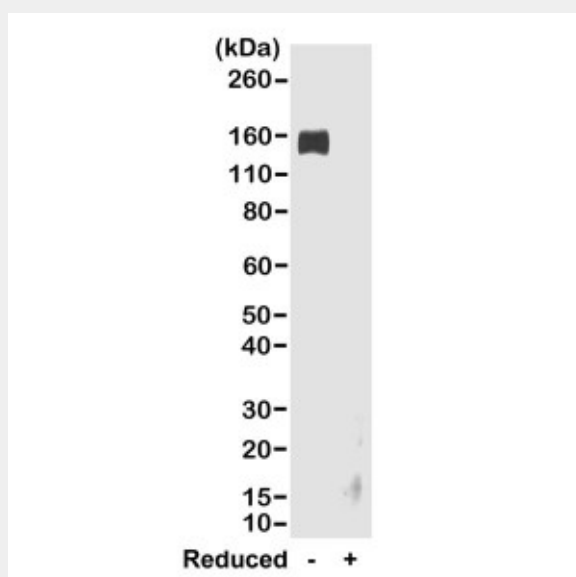
Protein G affinity purified from an animal origin-free culture supernatant

Notes

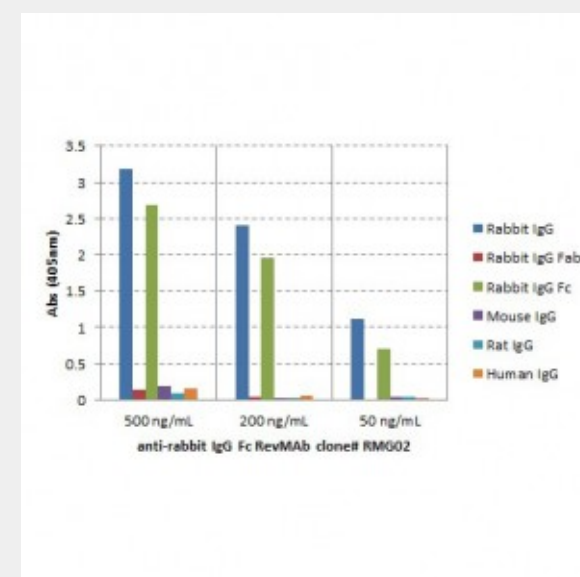
Sold under RevMab BioSciences Labelled.

Product Description

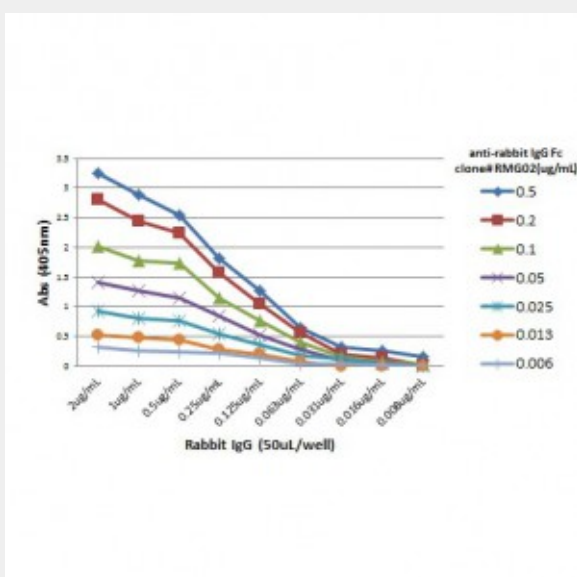
Biotinylated Goat monoclonal to Rabbit IgG Fc; This antibody reacts to the Fc region of Rabbit IgG. No cross reactivity with human IgG, rat IgG, or mouse IgG.



Western blot of nonreduced(-) and reduced(+) rabbit IgG (20ng/lane), using 0.2ug/mL of RevMab clone RMG02. This antibody reacts to nonreduced rabbit IgG (~150 kDa).



ELISA of IgGs from different species shows RMG02 reacts to the Fc region of rabbit IgG; no cross reactivity with human IgG, rat IgG, or mouse IgG. The plate was coated with 50 ng/well of different IgG. 500 ng/mL, 200 ng/mL, or 50 ng/mL of RMG02 was used as the primary antibody. An alkaline phosphatase conjugated anti-goat IgG as the secondary antibody.



A titer ELISA of rabbit IgG. The plate was coated with different amounts of rabbit IgG. A serial dilution of RMG02 was used as the primary antibody. An alkaline phosphatase conjugated anti-goat IgG as the secondary antibody.

All products are for RESEARCH USE ONLY. Not for diagnostic & therapeutic purposes!