

# Anti-Rabbit IgG Fab goat monoclonal antibody [RMG01]

Catalog No: tcra318



## Available Sizes

---

**Size:** 100ug

---



## Specifications

---

**Application:**

WB (nonreduced), IP, ICC, IHC, FC, ELISA

---

**Species Reactivity:**

Rabbit

---

**Host Species:**

Goat

---

**Immunogen / Amino acids:**

Rabbit IgG

---

**Conjugation:**

Unconjugated

---

**Clonality:**

Monoclonal

---

**Clones:**

RMG01

---

**Isotype:**

Goat IgG

---

**Form:**

Liquid

---

**Storage Buffer:**

50% Glycerol/PBS with 1% BSA and 0.09% sodium azide

---

**Concentration:**

1 mg/mL

**Recommended Dilution:**

ELISA: 0.01 ug/mL - 0.5 ug/mL; Immunocytochemistry (ICC): 0.5 ug/mL-2 ug/mL; Immunohistochemistry (IHC): 0.5 ug/mL-2 ug/mL; Western Blot (WB) (nonreduced): 0.1 ug/mL-0.5 ug/mL.

**Storage Instruction:**

store at -20°C ; avoid repeated thawing/freezing

**SwissProt:**

N/A

**Purification:**

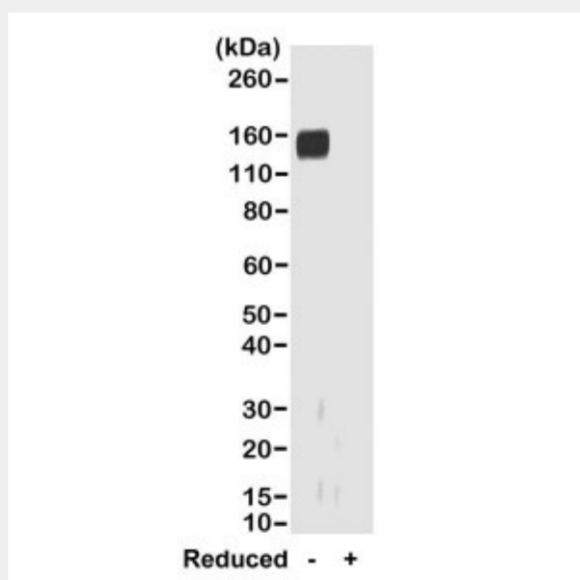
Protein G affinity purified from an animal origin-free culture supernatant

**Notes**

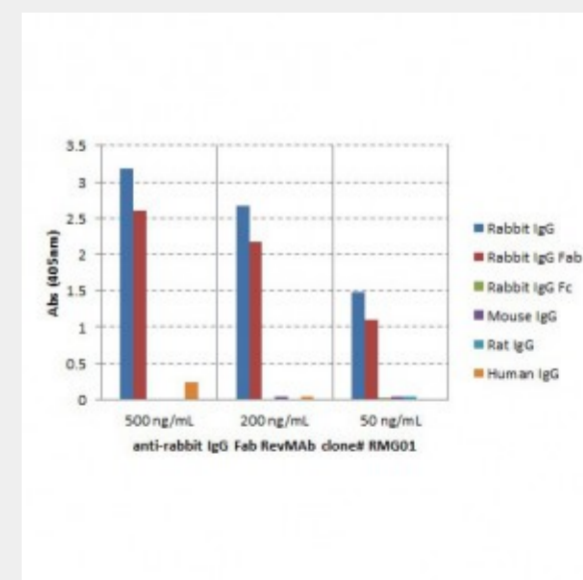
Sold under RevMab BioSciences Labelled.

**Product Description**

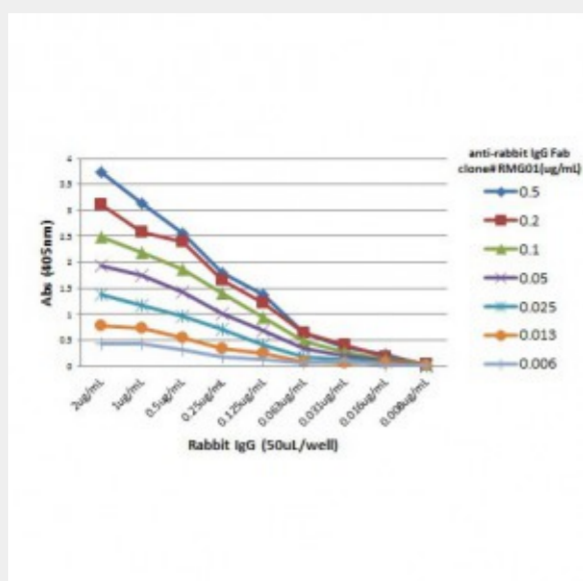
Goat monoclonal to Rabbit IgG Fab; This antibody reacts to the Fab region of Rabbit IgG. No cross reactivity with human IgG, rat IgG, or mouse IgG



Western blot of nonreduced(-) and reduced(+) rabbit IgG (20ng/lane), using 0.2ug/mL of RevMAB clone RMG01. This antibody reacts to nonreduced rabbit IgG (~150 kDa).



ELISA of IgGs from different species, shows RMG01 reacts to the Fab region of rabbit IgG; no cross reactivity with human IgG, rat IgG, or mouse IgG. The plate was coated with 50 ng/well of different IgG. 500 ng/mL, 200 ng/mL, or 50 ng/mL of RMG01 was used as the primary antibody. An alkaline phosphatase conjugated anti-goat IgG as the secondary antibody.



A titer ELISA of rabbit IgG. The plate was coated with different amounts of rabbit IgG. A serial dilution of RMG01 was used as the primary antibody. An alkaline phosphatase conjugated anti-goat IgG as the secondary antibody.

All products are for RESEARCH USE ONLY. Not for diagnostic & therapeutic purposes!