

Biotinylated Anti-Mouse IgG2c rabbit monoclonal antibody [RM223]

Catalog No: tcra125b



Available Sizes

Size: 50ug



Specifications

Application:

WB (nonreduced only), IP, ICC, IHC, FC, ELISA

Species Reactivity:

Mouse

Host Species:

Rabbit

Immunogen / Amino acids:

Mouse IgG2c

Conjugation:

Biotin

Clonality:

Monoclonal

Clones:

RM223

Isotype:

Rabbit IgG

Form:

Liquid

Storage Buffer:

50% Glycerol/PBS with 1% BSA and 0.09% sodium azide

Concentration:

1 mg/mL

Recommended Dilution:

ELISA: 0.01 ug/mL – 0.2 ug/mL Immunocytochemistry (ICC): 0.5 ug/mL-2 ug/mL Immunohistochemistry (IHC): 0.5 ug/mL-2 ug/mL Western Blot (WB): 0.5 ug/mL-2 ug/mL

Storage Instruction:

store at -20°C ; avoid repeated thawing/freezing

SwissProt:

N/A

Gene ID:

404711

Purification:

Protein A affinity purified from an animal origin-free culture supernatant

Notes

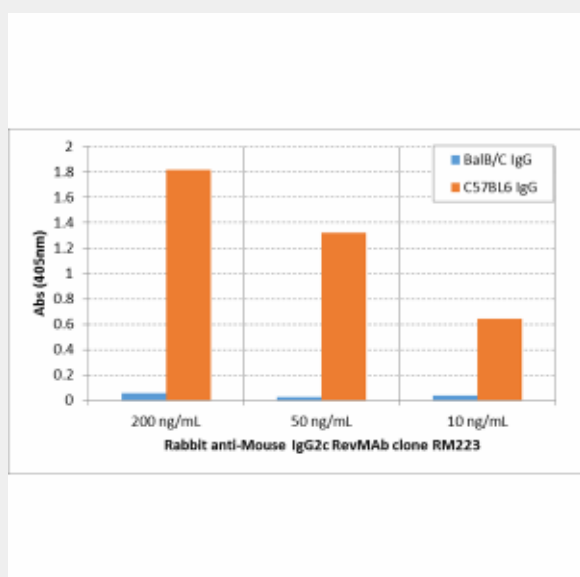
Sold under RevMab BioSciences Labelled.

Product Description

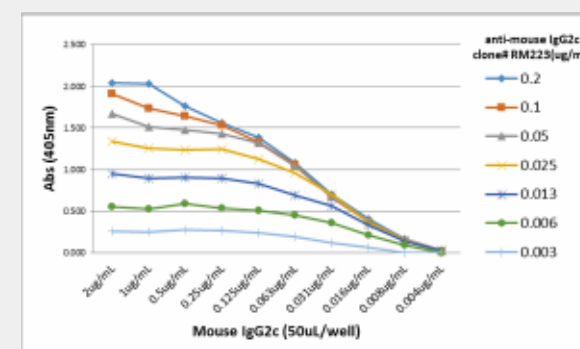
Biotinylated Rabbit monoclonal to Mouse IgG2C; This antibody reacts to the Fc region of mouse IgG2c.

No cross reactivity with mouse IgG1, IgG2a, IgG2b,

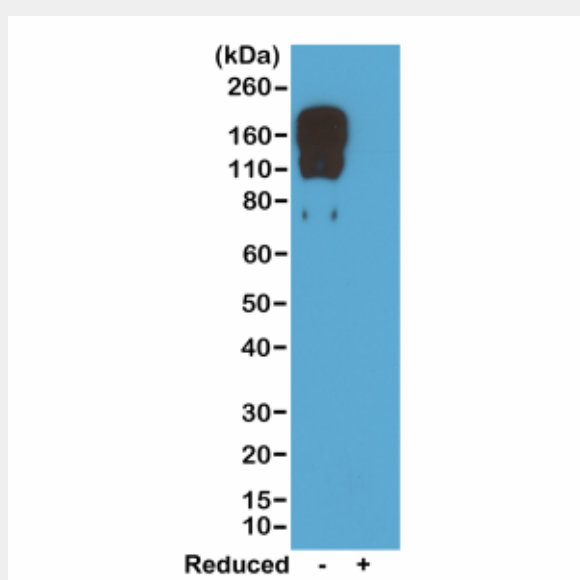
IgG3, IgM, IgA, IgE, human IgG, or rat IgG.



ELISA of IgG from BalB/C and C57BL6 shows RM223 reacts to C57BL6 IgG containing IgG2c, and does not react to BalB/C IgG containing IgG2a. 200 ng/mL, 50 ng/mL, or 10 ng/mL of RM223 was used as the primary antibody. An alkaline phosphatase conjugated anti-rabbit IgG as the secondary antibody.



A titer ELISA of mouse IgG2c. The plate was coated with different amounts of mouse IgG2c. A serial dilution of RM223 was used as the primary antibody. An alkaline phosphatase conjugated anti-rabbit IgG as the secondary antibody.



Western blot of nonreduced(-) and reduced(+) mouse IgG2c, using 0.5ug/mL of RevMAb clone RM223. This antibody reacts to nonreduced IgG2c

All products are for RESEARCH USE ONLY. Not for diagnostic & therapeutic purposes!