

# Biotinylated Anti-Mouse IgG2b rabbit monoclonal antibody [RM108]

Catalog No: tcra313b



## Available Sizes

**Size:** 50ug



## Specifications

**Application:**

WB (stronger on nonreduced), IP, ICC, IHC, FC, ELISA

**Species Reactivity:**

Mouse

**Host Species:**

Rabbit

**Immunogen / Amino acids:**

Mouse IgG2b

**Conjugation:**

Biotin

**Clonality:**

Monoclonal

**Clones:**

RM108

**Isotype:**

Rabbit IgG

**Form:**

Liquid

**Storage Buffer:**

50% Glycerol/PBS with 1% BSA and 0.09% sodium azide

**Concentration:**

1 mg/mL

---

**Recommended Dilution:**

ELISA: 0.005 ug/mL – 0.2 ug/mL; Immunocytochemistry (ICC): 0.5 ug/mL-2 ug/mL; Immunohistochemistry (IHC): 0.5 ug/mL-2 ug/mL; Western Blot (WB): 0.1 ug/mL-0.5 ug/mL

---

**Storage Instruction:**

store at -20°C ; avoid repeated thawing/freezing

---

**SwissProt:**

P01867

---

**Gene ID:**

16016

---

**Purification:**

Protein A affinity purified from an animal origin-free culture supernatant

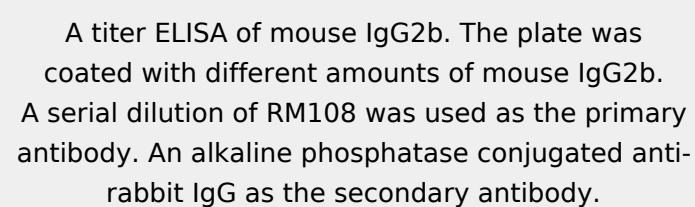
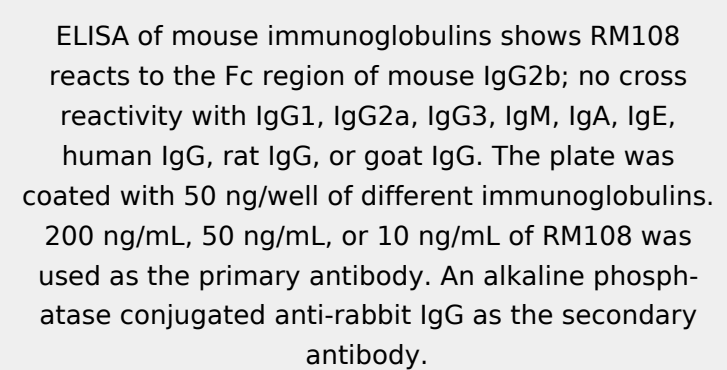
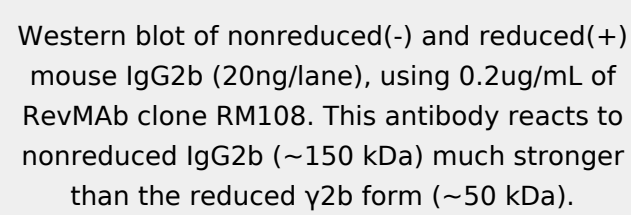
---

**Notes**

Sold under RevMab BioSciences Labelled.

**Product Description**

Biotinylated Rabbit monoclonal to Mouse IgG2b; This antibody reacts to the Fc region of mouse IgG2b. No cross reactivity with mouse IgG1, IgG2a, IgG3, IgM, IgA, IgE, human IgG, rat IgG, or goat IgG.



All products are for RESEARCH USE ONLY. Not for diagnostic & therapeutic purposes!