

Biotinylated Anti-Mouse Ig Kappa Light Chain rabbit monoclonal antibody [RM103]

Catalog No: tcra106b



Available Sizes

Size: 50ug



Specifications

Application:

WB (nonreduced), IP, ICC, IHC, FC, ELISA

Species Reactivity:

Mouse

Host Species:

Rabbit

Immunogen / Amino acids:

Mouse IgG

Conjugation:

Biotin

Clonality:

Monoclonal

Clones:

RM103

Isotype:

Rabbit IgG

Form:

Liquid

Storage Buffer:

50% Glycerol/PBS with 1% BSA and 0.09% sodium azide

Concentration:

1 mg/mL

Recommended Dilution:

ELISA: 0.005ug/mL-0.2ug/mL; Immunocytochemistry (ICC): 0.5ug/mL-2ug/mL; Immunohistochemistry (IHC): 0.5ug/mL-2ug/mL; Western Blot (WB): 0.1ug/mL-0.5ug/mL.

Storage Instruction:

store at -20°C ; avoid repeated thawing/freezing

SwissProt:

P01837

Gene ID:

16071

Purification:

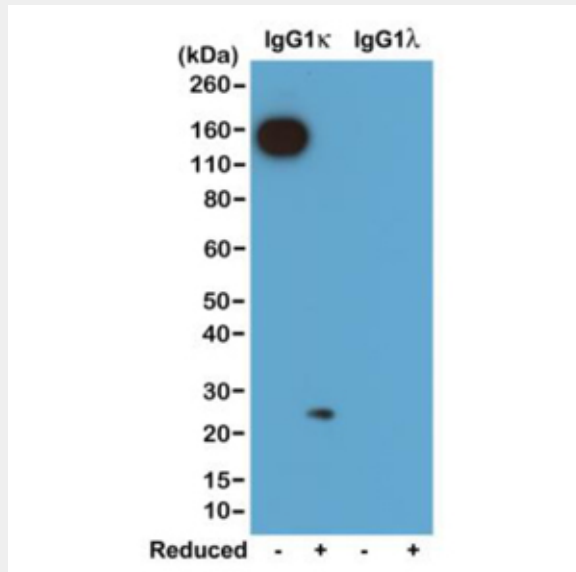
Protein A affinity purified from an animal origin-free culture supernatant

Notes

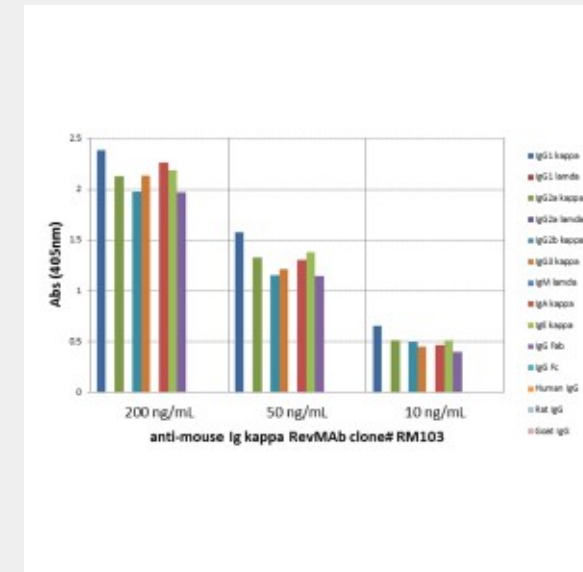
Sold under RevMab BioSciences Labelled.

Product Description

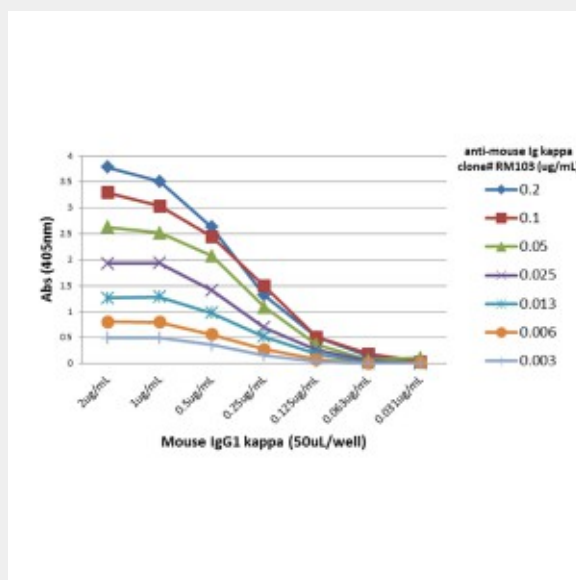
Biotinylated Rabbit monoclonal to Mouse Ig Kappa Light Chain; This antibody reacts to the kappa light chain of mouse immunoglobulins. No cross reactivity with the lamda light chain, human IgG, rat IgG, or goat IgG.



Western blot of nonreduced(-) and reduced(+) mouse IgG1κ and IgG1λ (20ng/lane), using 0.2ug/mL of RevMAb clone RM103. This antibody reacts to nonreduced IgG1κ (~150 kDa), and slightly reacts to reduced κ light chain (~25 kDa).



ELISA of mouse immunoglobulins shows RM103 reacts to the kappa light chain of mouse immunoglobulins. No cross reactivity with the lamda light chain, human IgG, rat IgG, or goat IgG. The plate was coated with 50 ng/well of different immunoglobulins. 200 ng/mL, 50 ng/mL, or 10 ng/mL of RM103 was used as the primary antibody. An alkaline phosphatase conjugated anti-rabbit IgG as the secondary antibody.



A titer ELISA of mouse IgG1κ. The plate was coated with different amounts of mouse IgG1κ. A serial dilution of RM103 was used as the primary antibody. An alkaline phosphatase conjugated anti-rabbit IgG as the secondary antibody.

All products are for RESEARCH USE ONLY. Not for diagnostic & therapeutic purposes!