

# Anti-Mouse IgM rabbit monoclonal antibody [RM109]

Catalog No: tcra108



## Available Sizes

**Size:** 100ug



## Specifications

**Application:**

ICC, IHC, IP, FC, ELISA

**Species Reactivity:**

Mouse

**Host Species:**

Rabbit

**Immunogen / Amino acids:**

Mouse IgM

**Conjugation:**

Unconjugated

**Clonality:**

Monoclonal

**Clones:**

RM109

**Isotype:**

Rabbit IgG

**Form:**

Liquid

**Storage Buffer:**

50% Glycerol/PBS with 1% BSA and 0.09% sodium azide

**Concentration:**

1 mg/mL

---

**Recommended Dilution:**

ELISA: 0.005ug/ml - 0.2ug/ml

Immunocytochemistry: 0.5-2ug/ml

Immunohistochemistry (FFPE): 0.5-2ug/ml (1)

---

**Storage Instruction:**

store at -20°C ; avoid repeated thawing/freezing

---

**SwissProt:**

P01872

---

**Gene ID:**

16019

---

**Purification:**

Protein A affinity purified from an animal origin-free culture supernatant

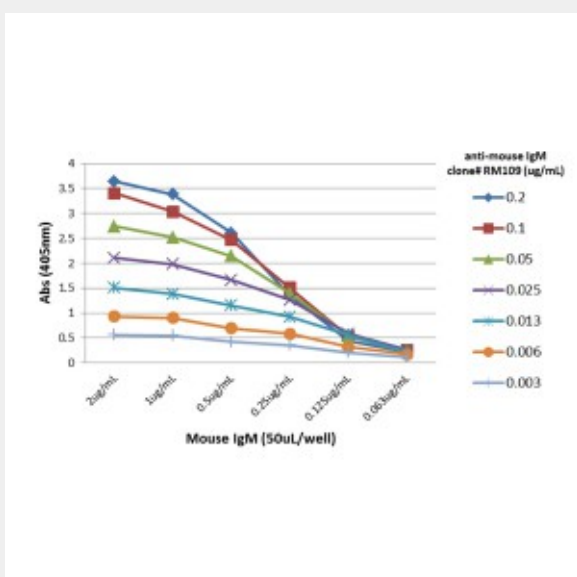
---

**Notes**

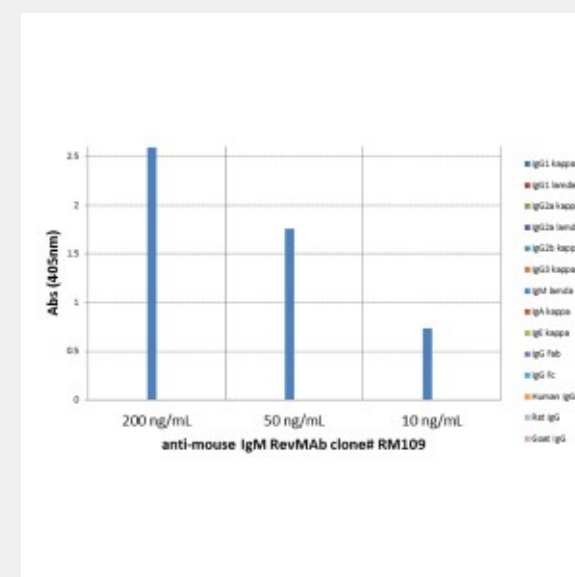
Sold under RevMab BioSciences Labelled.

**Product Description**

Rabbit monoclonal to Mouse IgM; This antibody reacts to mouse IgM. No cross reactivity with mouse IgG1, IgG2a, IgG2b, IgG3, IgA, IgE, human IgG, rat IgG, or goat IgG.



A titer ELISA of mouse IgM. The plate was coated with different amounts of mouse IgM. A serial dilution of RM109 was used as the primary antibody. An alkaline phosphatase conjugated anti-rabbit IgG as the secondary antibody.



ELISA of mouse immunoglobulins shows RM109 reacts to mouse IgM; no cross reactivity with IgG1, IgG2a, IgG2b, IgG3, IgA, IgE, human IgG, rat IgG, or goat IgG. The plate was coated with 50 ng/well of different immunoglobulins. 200 ng/mL, 50 ng/mL, or 10 ng/mL of RM109 was used as the primary antibody. An alkaline phosphatase conjugated anti-rabbit IgG as the secondary antibody.

All products are for RESEARCH USE ONLY. Not for diagnostic & therapeutic purposes!