

Anti-Mouse Ig Kappa Light Chain rabbit monoclonal antibody [RM103]

Catalog No: tcra106



Available Sizes

Size: 100ug



Specifications

Application:

WB (nonreduced), IP, ICC, IHC, FC, ELISA

Species Reactivity:

Mouse

Host Species:

Rabbit

Immunogen / Amino acids:

Mouse IgG

Conjugation:

Unconjugated

Clonality:

Monoclonal

Clones:

RM103

Isotype:

Rabbit IgG

Form:

Liquid

Storage Buffer:

50% Glycerol/PBS with 1% BSA and 0.09% sodium azide

Concentration:

1 mg/mL

Recommended Dilution:

ELISA: 0.005-0.2ug/ml

Immunocytochemistry: 0.5-2ug/ml

Immunohistochemistry (FFPE): 0.5-2ug/ml (1)

Western Blot (non-reduced): 0.1-0.5ug/ml

Storage Instruction:

store at -20°C ; avoid repeated thawing/freezing

SwissProt:

P01837

Gene ID:

16071

Purification:

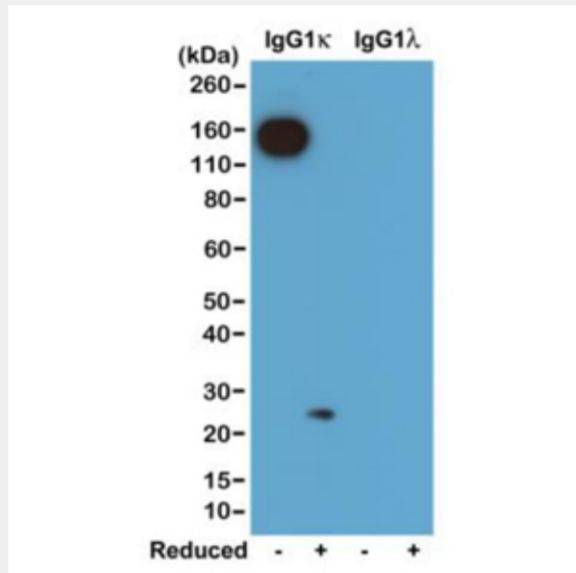
Protein A affinity purified from an animal origin-free culture supernatant

Notes

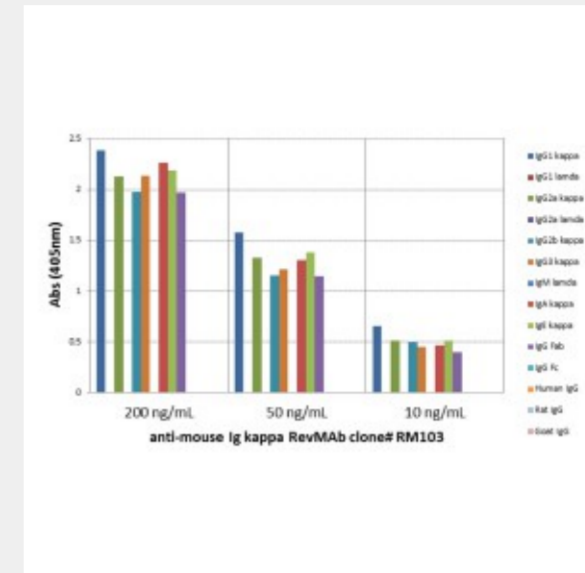
Sold under RevMab BioSciences Labelled.

Product Description

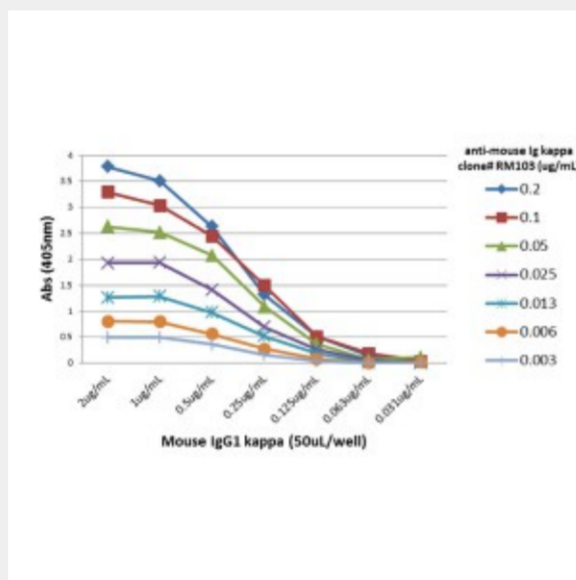
Rabbit monoclonal to Mouse Ig Kappa Light Chain;This antibody reacts to the kappa light chain of mouse immunoglobulins. No cross reactivity with the lamda light chain, human IgG, rat IgG, or goat IgG.



Western blot of nonreduced(-) and reduced(+) mouse IgG1κ and IgG1λ (20ng/lane), using 0.2ug/mL of RevMAb clone RM103. This antibody reacts to nonreduced IgG1κ (~150 kDa), and slightly reacts to reduced κ light chain (~25 kDa).



ELISA of mouse immunoglobulins shows RM103 reacts to the kappa light chain of mouse immunoglobulins. No cross reactivity with the lamda light chain, human IgG (κ+λ), rat IgG (κ+λ), or goat IgG (κ+λ). The plate was coated with 50 ng/well of different immunoglobulins. 200 ng/mL, 50 ng/mL, or 10 ng/mL of RM103 was used as the primary antibody. An alkaline phosphatase conjugated anti-rabbit IgG as the secondary antibody.



A titer ELISA of mouse IgG1κ. The plate was coated with different amounts of mouse IgG1κ. A serial dilution of RM103 was used as the primary antibody. An alkaline phosphatase conjugated anti-rabbit IgG as the secondary antibody.

All products are for RESEARCH USE ONLY. Not for diagnostic & therapeutic purposes!