

# Goat anti-Annexin I Antibody

Catalog No: tcva09185



## Available Sizes

---

**Size:** 100µg

---



## Specifications

---

**Application:**

Pep-ELISA, WB

---

**Research Area:**

phagocytosis; annexin

---

**Species Reactivity:**

Human, Mouse, Rat, Dog, Cow, Pig

---

**Host Species:**

Goat

---

**Immunogen / Amino acids:**

CQAILDETKGDYEK

---

**Conjugation:**

Unconjugated

---

**Form:**

Liquid

---

**Storage Buffer:**

Tris saline, 0.02% sodium azide, pH7.3 with 0.5% bovine serum albumin

---

**Concentration:**

0.5 mg/ml in 200 µl

---

**Recommended Dilution:**

Western Blot: Approx 37kDa band observed in lysates of cell lines K562 and NIH3T3 (calculated MW of 38.7kDa according to Human NP\_000691.1 and Mouse NP\_034860.2). Approx 37kDa band observed in Rat and Pig Spleen lysates (calculated MW of 38.7kDa according to Pig NP\_001157470.1). Recommended concentration: 1-3µg/ml.

Peptide ELISA: antibody detection limit dilution 1:4000.

---

**Amino Acid Sequence:**

NP\_000691.1

---

**Storage Instruction:**

Aliquot store at -20C. Avoid freeze / thaw cycles.

---

**Alternative Names:**

annexin I; ANXA1; annexin A1; ANX1; LPC1; annexin I (lipocortin I); lipocortin I

---

**Gene ID:**

301 (human);16952 (mouse); 25380 (rat);

---

**Reference Sequence No.:**

NP\_000691.1

---

**Calculated Molecular Weight:**

38.7

---

**Purification:**

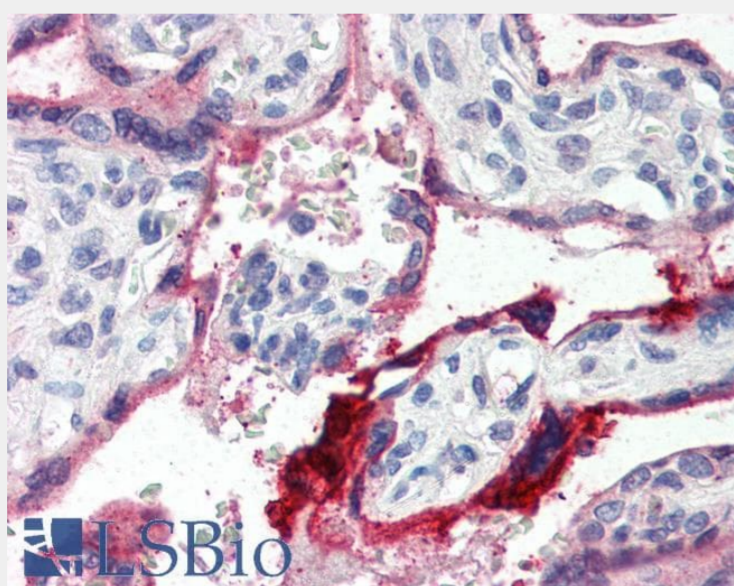
Purified from goat serum by ammonium sulphate precipitation followed by antigen affinity chromatography using the immunizing peptide

---

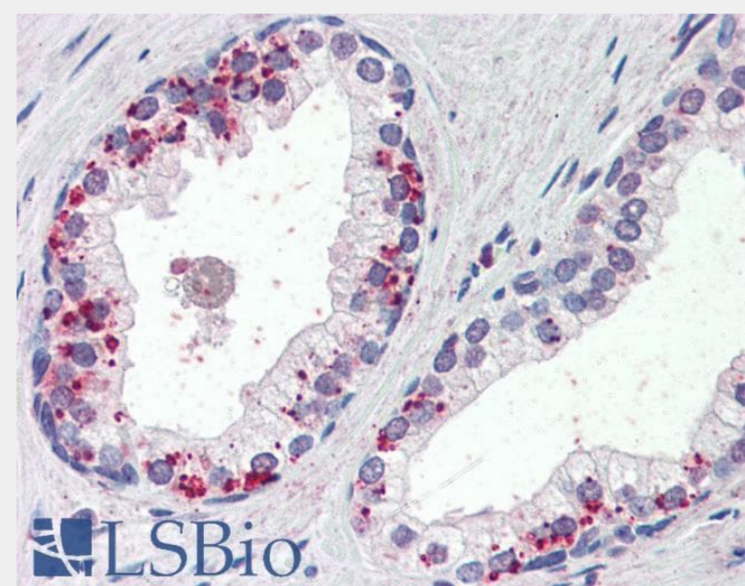
**Positive Control:**

tcva09185p

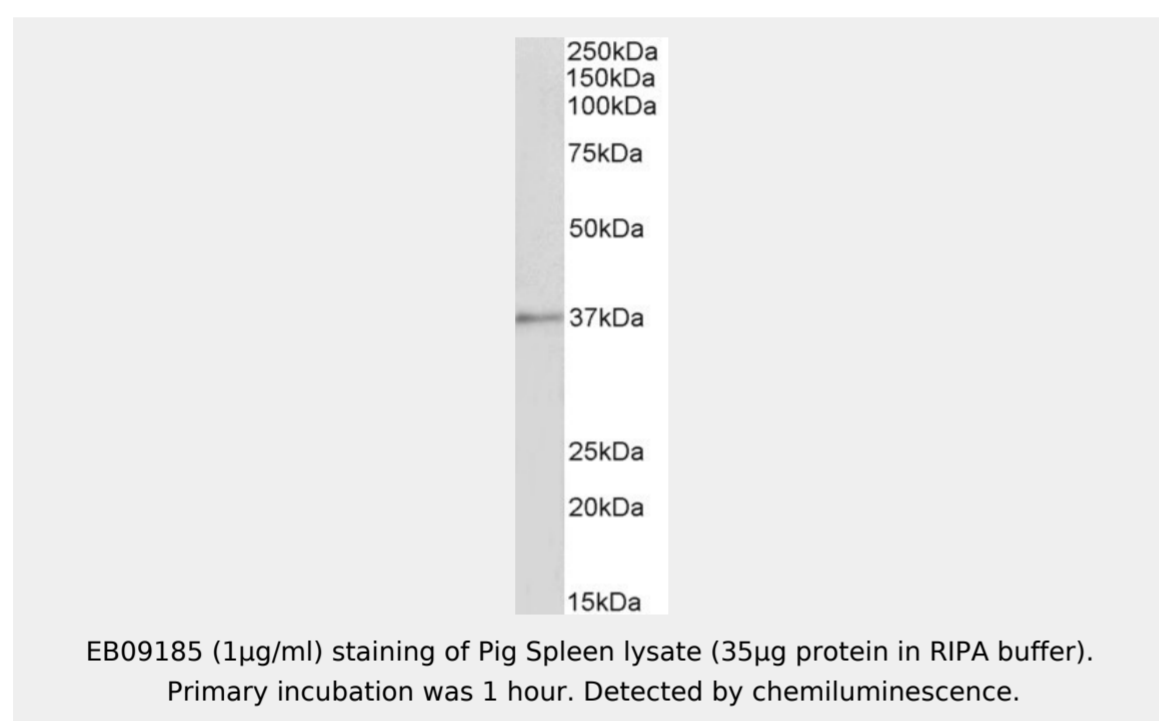
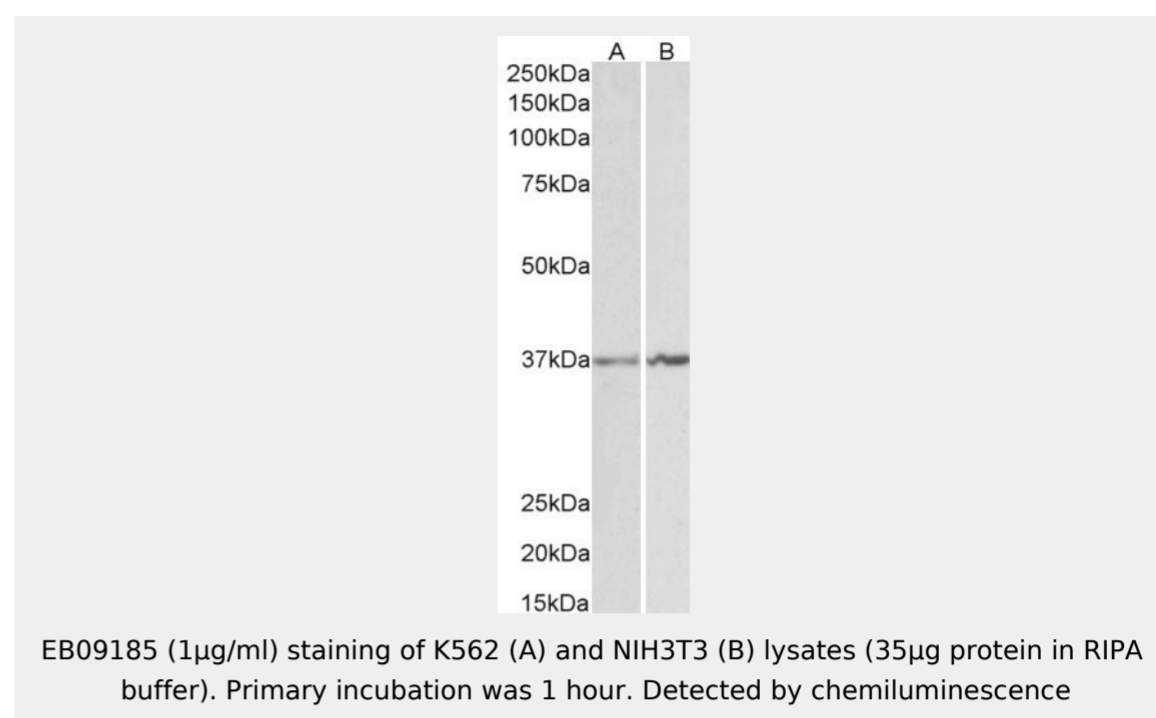
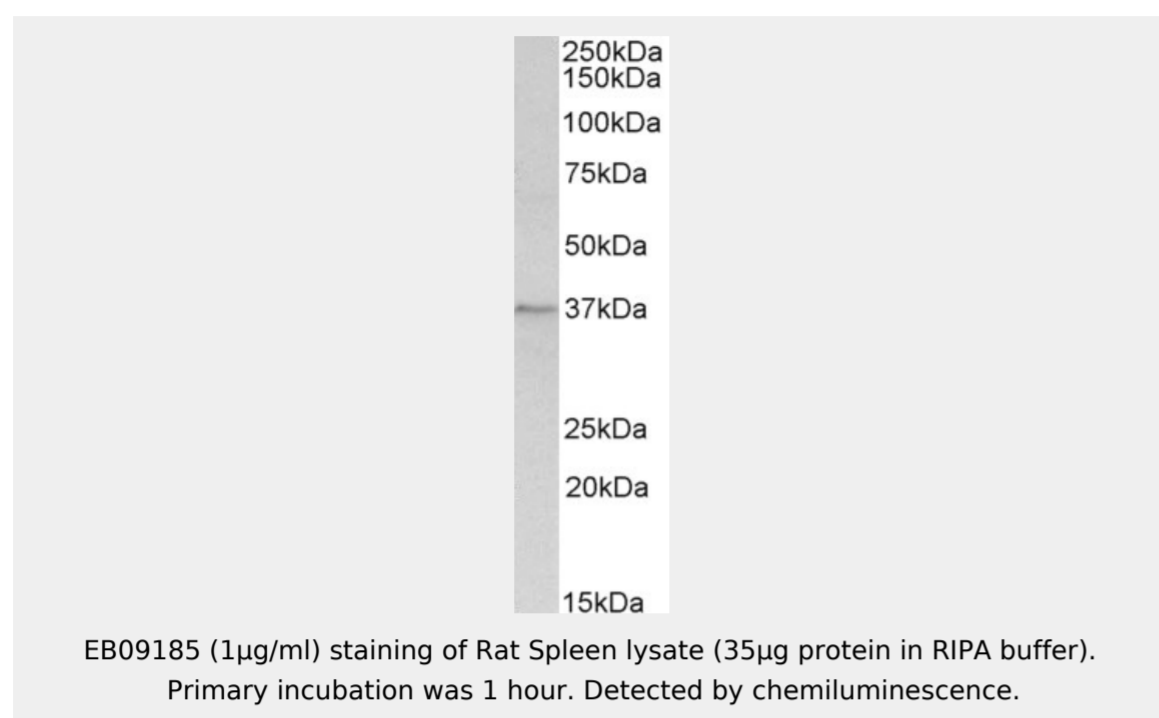
---



EB09185 (4µg/ml) staining of paraffin embedded Human Placenta. Steamed antigen retrieval with citrate buffer pH 6, AP-staining. **This data is from a previous batch, not on sale.**



EB09185 (4µg/ml) staining of paraffin embedded Human Prostate. Steamed antigen retrieval with citrate buffer pH 6, AP-staining. **This data is from a previous batch, not on sale.**



All products are for RESEARCH USE ONLY. Not for diagnostic & therapeutic purposes!