

# Goat anti-Desmin Antibody

Catalog No: tcva09106



## Available Sizes

---

**Size:** 100µg



## Specifications

---

**Application:**

Pep-ELISA, WB

**Research Area:**

cytoskeletal; cancer

**Species Reactivity:**

Human, Dog, Cow

**Host Species:**

Goat

**Immunogen / Amino acids:**

C-RDGEVVSEATQQQHE

**Conjugation:**

Unconjugated

**Form:**

Liquid

**Storage Buffer:**

Tris saline, 0.02% sodium azide, pH7.3 with 0.5% bovine serum albumin

**Concentration:**

0.5 mg/ml in 200 µl

**Recommended Dilution:**

Western Blot: Approx 55-60kDa band observed in Human

Mouse

Rat and Pig Skeletal Muscle lysates (calculated MW of 53.5kDa according to Human NP\_001918.3)

Mouse NP\_034173.1

Rat NP\_071976.1 and 53.6kDa according to Pig NP\_001001535.1). Recommended concentration: 0.3-1µg/ml. Primary incubation was 1 hour. Peptide ELISA: antibody detection limit dilution 1:4000.

**Amino Acid Sequence:**

NP\_001918.3

**Storage Instruction:**

Aliquot store at -20C. Avoid freeze / thaw cycles.

**Alternative Names:**

DES; desmin; CMD1I; CSM1; CSM2; FLJ12025; FLJ39719; FLJ41013; FLJ41793; intermediate filament protein

**Gene ID:**

1674 (human);13346 (mouse); 64362 (rat);

**Reference Sequence No.:**

NP\_001918.3

**Calculated Molecular Weight:**

53.5

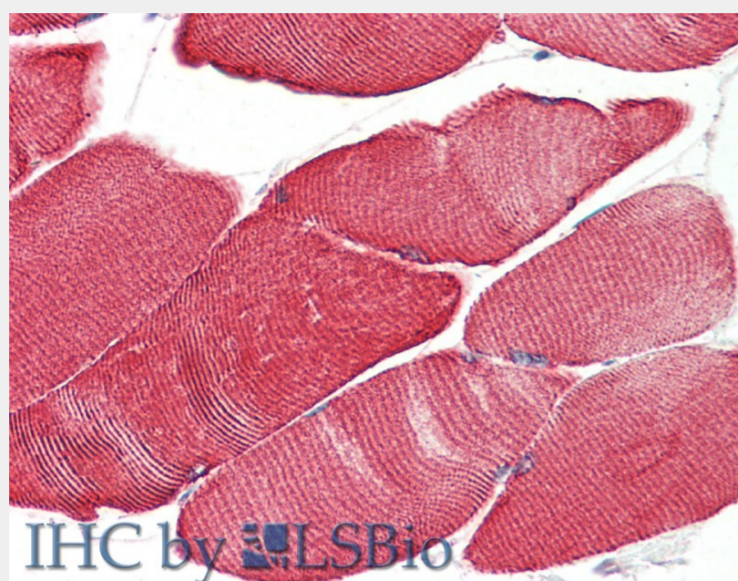
**Purification:**

Purified from goat serum by ammonium sulphate precipitation followed by antigen affinity chromatography using the immunizing peptide

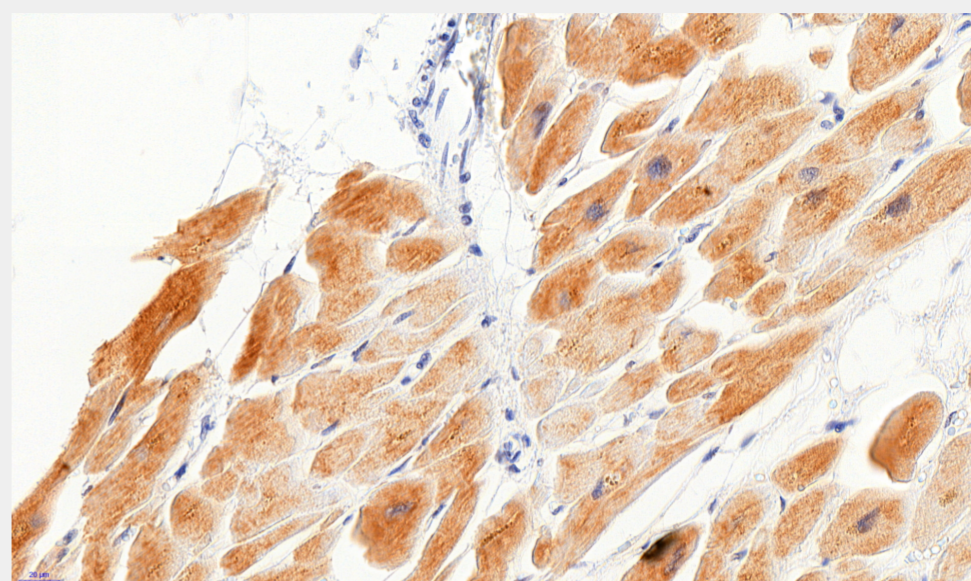
**Positive Control:**

tcva09106p

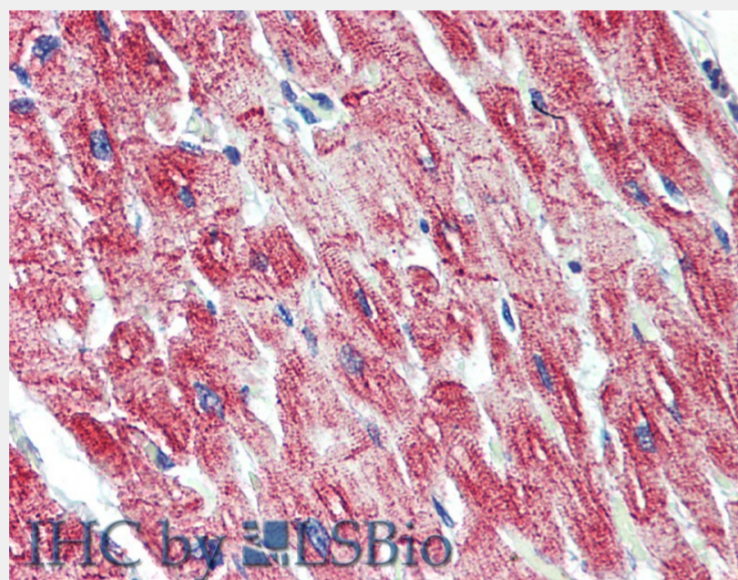




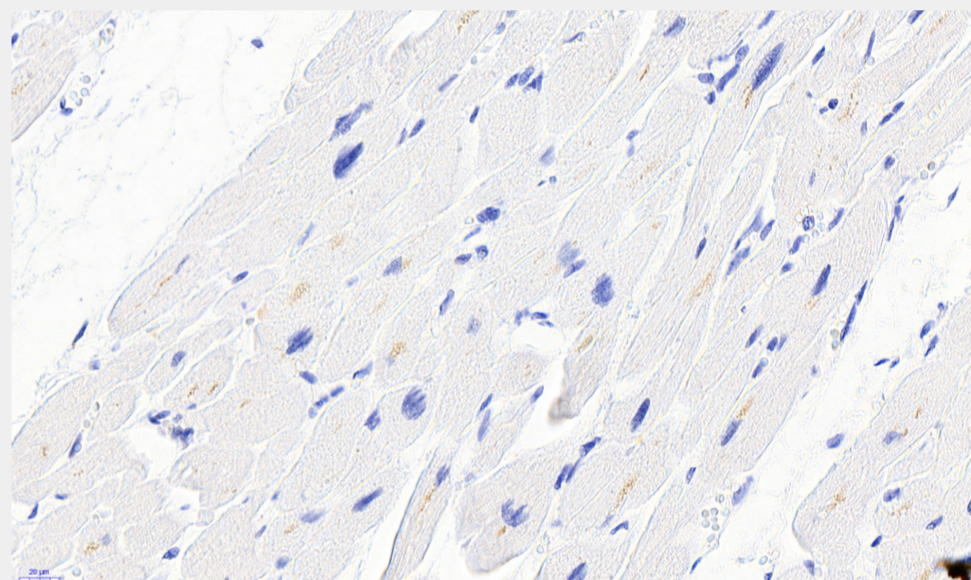
EB09106 (5 $\mu$ g/ml) staining of paraffin embedded Human Skeletal Muscle. Steamed antigen retrieval with citrate buffer pH 6, AP-staining. **This data is from a previous batch, not on sale.**



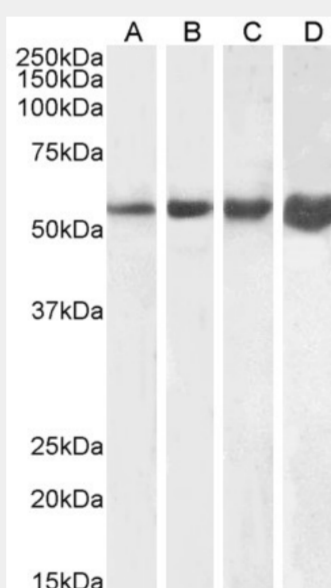
EB09106 (3.75 $\mu$ g/ml) staining of paraffin embedded Human Heart. Heat induced antigen retrieval with citrate buffer pH 6, HRP-staining. **This data is from a previous batch, not on sale.**



EB09106 (5 $\mu$ g/ml) staining of paraffin embedded Human Heart. Steamed antigen retrieval with citrate buffer pH 6, AP-staining. **This data is from a previous batch, not on sale.**



EB09106 Negative Control showing staining of paraffin embedded Human Heart, with no primary antibody. **This data is from a previous batch, not on sale.**



EB09106 (1 $\mu$ g/ml) staining of Human (A), Mouse (B), Rat (C) and Pig (D) Skeletal Muscle lysate (35 $\mu$ g protein in RIPA buffer). Detected by chemiluminescence.

All products are for RESEARCH USE ONLY. Not for diagnostic & therapeutic purposes!