

Polyclonal Antibody to Microtubule Associated Protein 4 (MAP4)

Catalog No: tcua5142



Available Sizes

Size: 20ul

Size: 100ul

Size: 200ul



Specifications

Application:

WB; IHC; ICC; IP.

Species Reactivity:

Rattus norvegicus (Rat)

Host Species:

Rabbit

Immunogen / Amino acids:

Recombinant Microtubule Associated Protein 4 (MAP4)

Conjugation:

Unconjugated

Clonality:

Polyclonal

Form:

Liquid

Storage Buffer:

0.01M PBS, pH7.4, containing 0.05% Proclin-300, 50% glycerol.

Recommended Dilution:

Western blotting: 0.5-3 μ g/mL

Immunohistochemistry: 5-20 μ g/mL

Immunocytochemistry: 5-20 μ g/mL

Optimal working dilutions must be determined by end user.

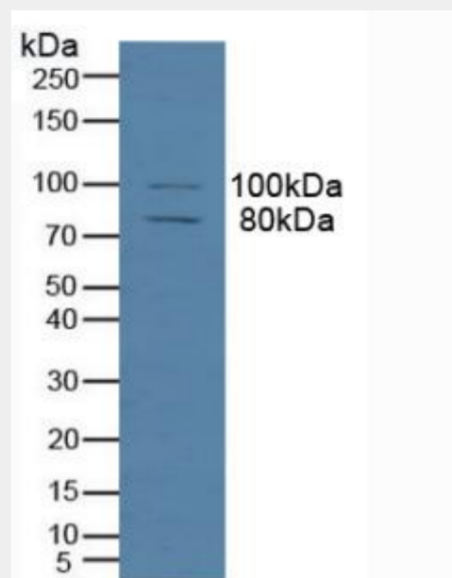


Figure. Western Blot; Sample: Human Hela Cells.)

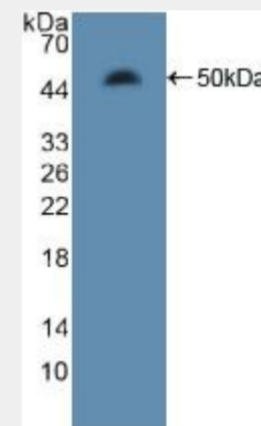


Figure. Western Blot; Sample: Recombinant MAP4, Rat.)

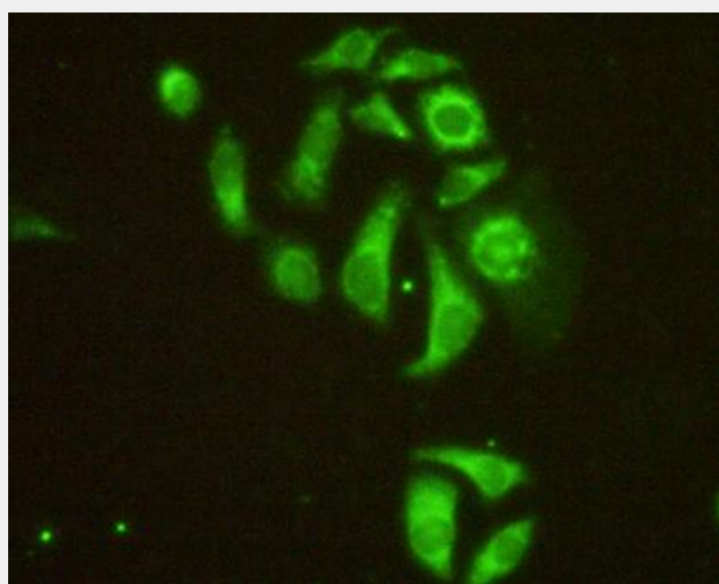


Figure:FITC staining on IHC-P
Simple: Hela cells)

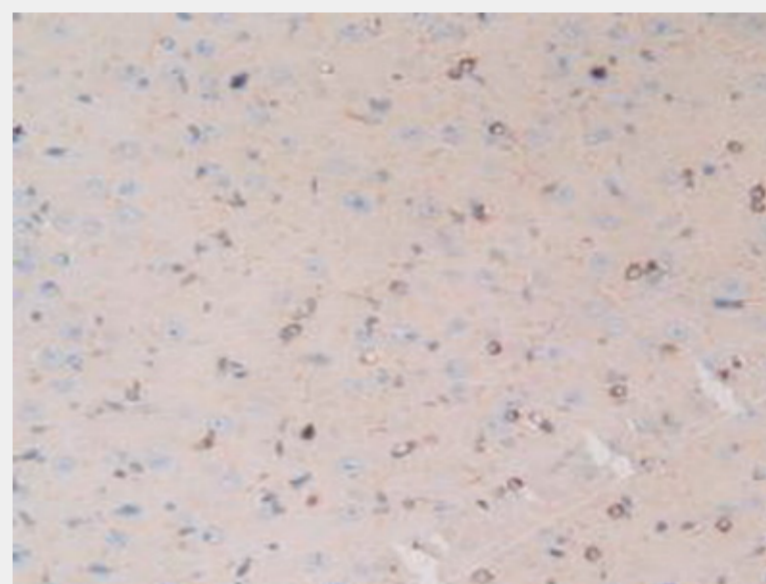


Figure. DAB staining on IHC-P;
Samples: Rat Brain Tissue.)

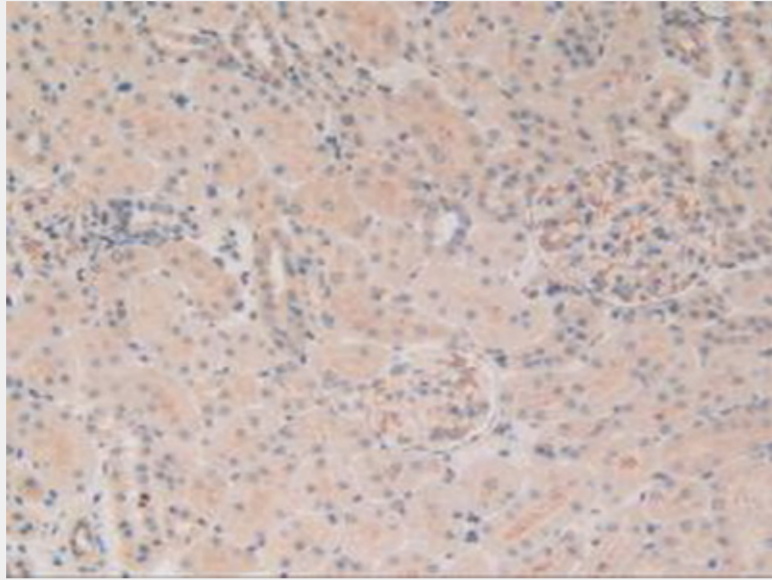


Figure. DAB staining on IHC-P;
Samples: Rat Kidney Tissue.)

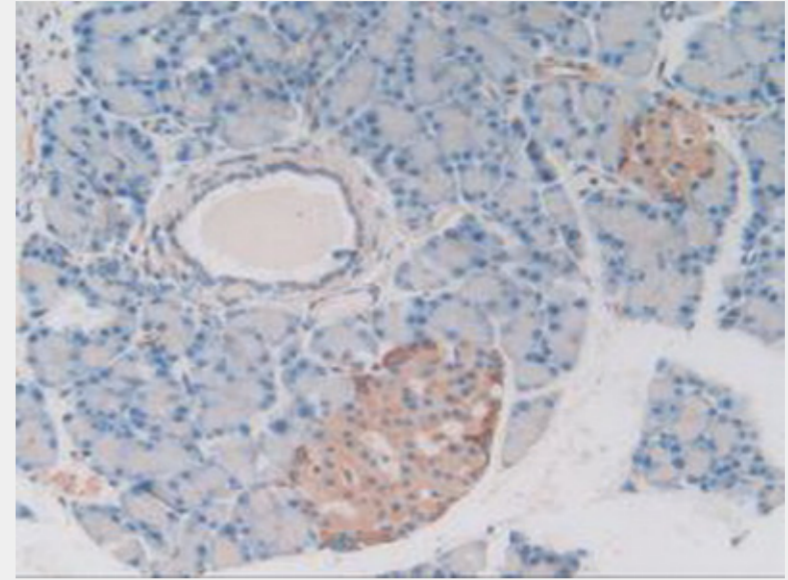


Figure. DAB staining on IHC-P;
Samples: Rat Pancreas Tissue.)

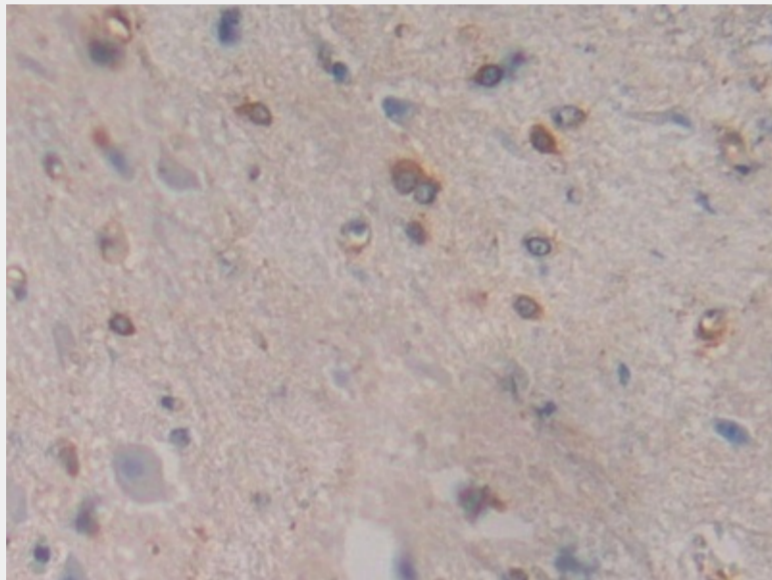


Figure. DAB staining on IHC-P; Samples: Rat Spinal Cord Tissue.)

All products are for RESEARCH USE ONLY. Not for diagnostic & therapeutic purposes!