

Goat anti-VPS35 / MEM3 Antibody

Catalog No: tcva06268



Available Sizes

Size: 100μg



Specifications

Application:

Pep-ELISA, WB, IHC

Research Area:

protein sorting; VPS

Species Reactivity:

Human, Mouse, Rat, Cow

Host Species:

Goat

Immunogen / Amino acids:

C-SPESEGPIYEGILIL

Conjugation:

Unconjugated

Form:

Liquid

Storage Buffer:

Tris saline, 0.02% sodium azide, pH7.3 with 0.5% bovine serum albumin

Concentration:

0.5 mg/ml in 200 μl

Recommended Dilution:

Western Blot: Approx 85-90kDa band observed in Human Brain (Cerebellum)

Heart and Rat Brain lysates (calculated MW of 91.7kDa according to NP_060676.2). Recommended concentration: 1-3μg/ml. Preliminary testing was unsuccessful on Mouse Brain for this particular batch. Primary incubation was 1 hour.

Peptide ELISA: antibody detection limit dilution 1:128000.

Amino Acid Sequence:

NP_060676.2

Storage Instruction:

Aliquot store at -20C. Avoid freeze / thaw cycles.

Alternative Names:

VPS35; MEM3; FLJ10752; FLJ13588; FLJ20388; DKFZp434E1211; DKFZp434P1672; vacuolar protein sorting 35 (yeast); maternal-embryonic 3; vacuolar protein sorting 35 homolog (S. cerevisiae); vacuolar protein sorting 35

Gene ID:

55737 (human);65114 (mouse);

Reference Sequence No.:

NP_060676.2

Calculated Molecular Weight:

91.7

Purification:

Purified from goat serum by ammonium sulphate precipitation followed by antigen affinity chromatography using the immunizing peptide

Positive Control:

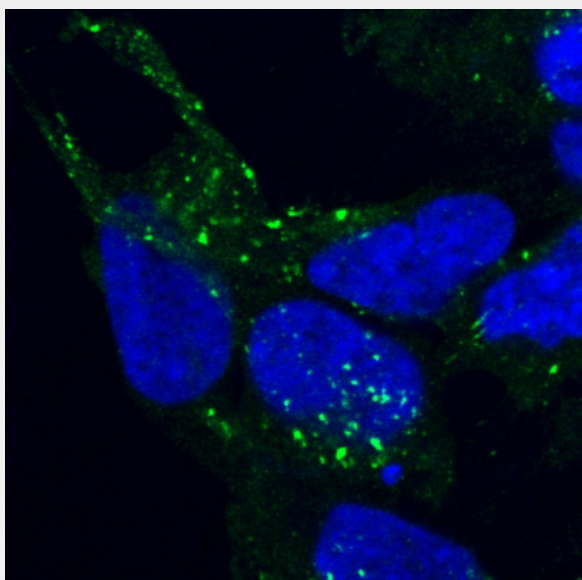
tcva06268p

Notes

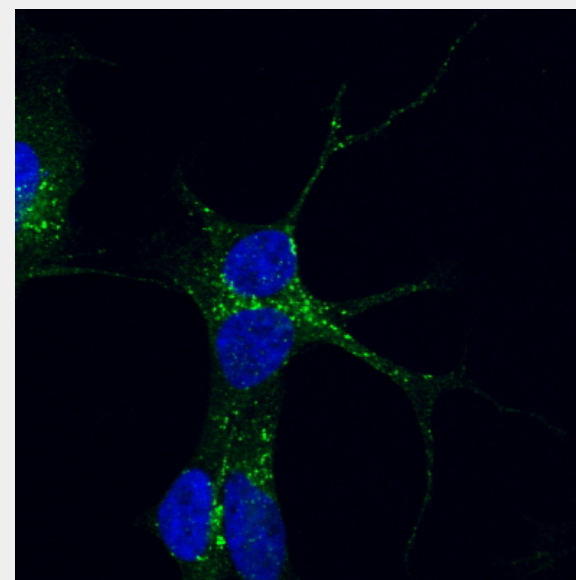
Note there is a hypothetical protein called similar to vacuolar protein sorting 35 (XP_040192.1), which is virtually identical.

Product Description

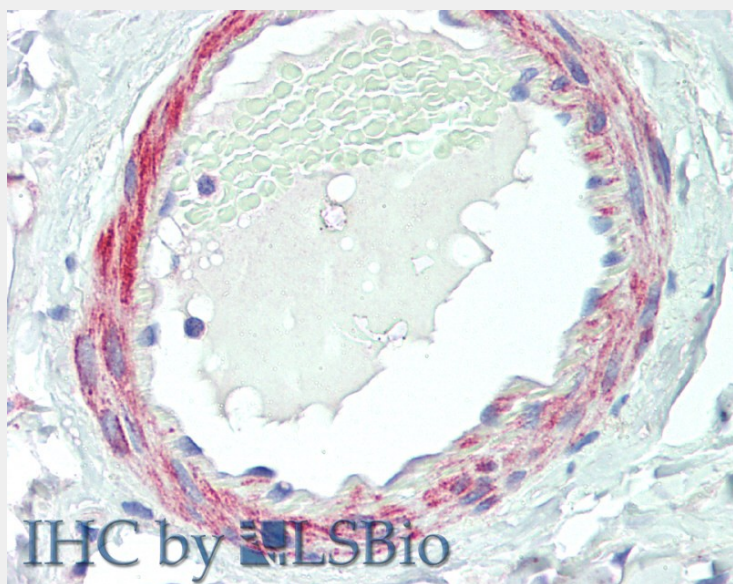
Note there is a hypothetical protein called similar to vacuolar protein sorting 35 (XP_040192.1), which is virtually identical.



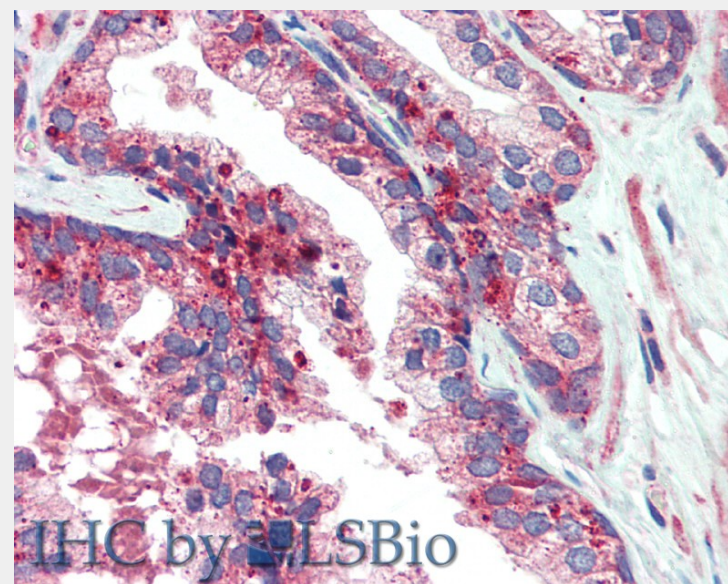
EB06268 staining of PFA-fixed and saponin permeabilized HEK293 and detected with FITC in confocal microscopy. Data obtained from Aarhus University Denmark.
This data is from a previous batch, not on sale.



EB06268 staining of PFA-fixed and saponin permeabilized SHSY5Y and detected with FITC in confocal microscopy. Data obtained from Dr. M. Schallburg Nielsen, Aarhus University Denmark. **This data is from a previous batch, not on sale.**



EB06268 (5µg/ml) staining of paraffin embedded Human Small Intestine. Steamed antigen retrieval with citrate buffer pH 6, AP-staining.



EB06268 (5µg/ml) staining of paraffin embedded Human Prostate. Steamed antigen retrieval with citrate buffer pH 6, AP-staining.



EB06268 (1µg/ml) staining of Human Brain (Cerebellum) (A) and Rat Brain (B) lysates (35µg protein in RIPA buffer). Detected by chemiluminescence.

All products are for RESEARCH USE ONLY. Not for diagnostic & therapeutic purposes!