

Goat anti-UBE2L3 Antibody

Catalog No: tcva05770



Available Sizes

Size: 100µg



Specifications

Application:

Pep-ELISA, WB, IF

Research Area:

ubiquitin-conjugating enzyme

Species Reactivity:

Human, Mouse, Rat, Pig, Cow

Host Species:

Goat

Immunogen / Amino acids:

C-EFTKKYGEKRPVD

Conjugation:

Unconjugated

Form:

Liquid

Storage Buffer:

Tris saline, 0.02% sodium azide, pH7.3 with 0.5% bovine serum albumin

Concentration:

0.5 mg/ml in 200 µl

Recommended Dilution:

Western Blot: Approx 18kDa band observed in lysates of cell lines HeLa HEK293
HepG2 and Jurkat and also in lysates of Human
Mouse and Rat Heart

Skeletal Muscle and Testis and of Pig Heart (calculated MW of 17.9kDa according to Human NP_003338.1 and Mouse NP_033482.1). Recommended concentration: 1-3µg/ml. Peptide ELISA: antibody detection limit dilution 1:128000.

Amino Acid Sequence:

NP_003338.1

Storage Instruction:

Aliquot store at -20C. Avoid freeze / thaw cycles.

Alternative Names:

UBE2L3; ubiquitin-conjugating enzyme E2L 3; UBCH7; E2-F1; L-UBC; UbcM4; ubiquitin carrier protein; ubiquitin-conjugating enzyme UBCH7; ubiquitin-protein ligase

Gene ID:

7332 (human);22195 (mouse);

Reference Sequence No.:

NP_003338.1

Calculated Molecular Weight:

17.9

Purification:

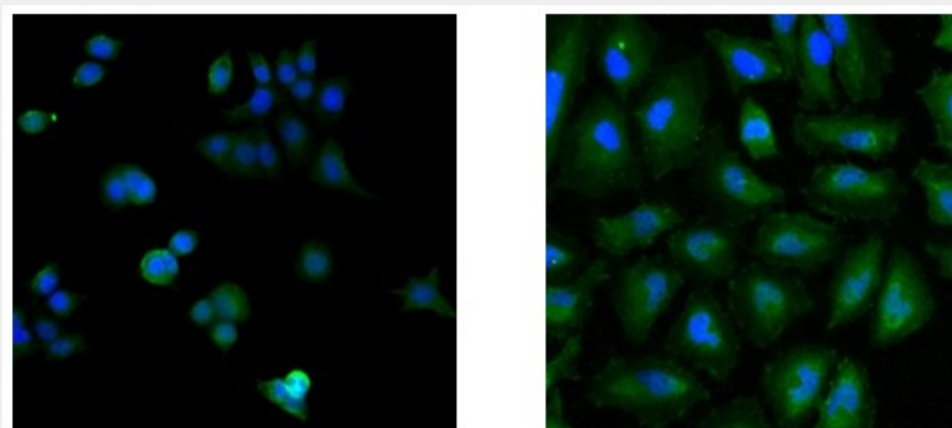
Purified from goat serum by ammonium sulphate precipitation followed by antigen affinity chromatography using the immunizing peptide

DS Gene Ontology Terms:

protein modification; ubiquitin--protein ligase; ubiquitin conjugating enzyme; ubiquitin-dependent protein degradation

Positive Control:

tcva05770p



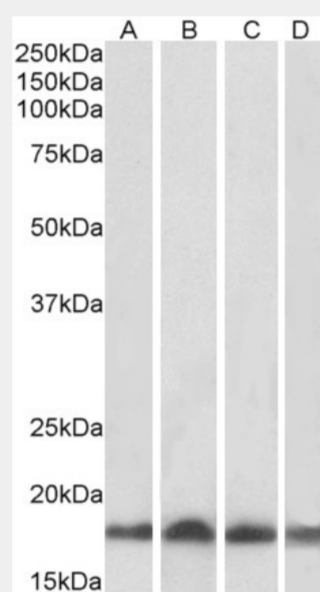
A

B

Immunofluorescence staining of MCF7 (A) and HeLa (B) cells with 5ug/ml EB05770 antibody. Detected with Rabbit anti-goat IgG-Alexafluor488 antibody at 1:1000. Nuclei Counterstained with DAPI.



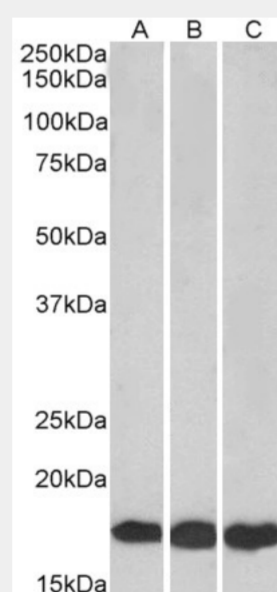
EB05770 staining (0.5μg/ml) of HeLa lysate (RIPA buffer, 35μg total protein per lane). Primary incubated for 1 hour. Detected by western blot using chemiluminescence.



EB05770 (0.01μg/ml) staining of Human (A), Mouse (B), Rat (C) and Pig (D) Heart lysate (35μg protein in RIPA buffer). Primary incubation was 1 hour. Detected by chemiluminescence.



EB05770 (0.03μg/ml) staining of Human (A), Mouse (B) and Rat (C) Skeletal Muscle lysates (35μg protein in RIPA buffer). Primary incubation was 1 hour. Detected by chemiluminescence.



EB05770 (0.01μg/ml) staining of HEK293 (A), HepG2 (B) and Jurkat (C) lysates (35μg protein in RIPA buffer). Primary incubation was 1 hour. Detected by chemiluminescence.

All products are for RESEARCH USE ONLY. Not for diagnostic & therapeutic purposes!