

ALDH1A1 (Internal) Immunizing Peptide

Catalog No: tcva07138p



Available Sizes

Size: 100µg



Specifications

Application:

For Blocking studies, reconstitute pellet in 200µl distilled water to obtain a 0.5mg/ml peptide solution.

Form:

Lyophilised peptide

Concentration:

5pmol/µL ; Formulation 5pmol/µL in 5% (v/v) acetonitrile/H₂O.

Purity / Grade:

>95%

Storage Instruction:

Shipped at ambient temperature, store at -20°C.

Alternative Names:

ALDH1A1; aldehyde dehydrogenase 1 family, member A1 ; ALDC; ALDH-E1; ALDH1; ALDH11; MGC2318; PUMB1; RALDH1; ALDH class 1; acetaldehyde dehydrogenase 1; aldehyde dehydrogenase 1, soluble; aldehyde dehydrogenase 1A1; aldehyde dehydrogenase, liver cytosolic; retinal dehydrogenase 1

Predicted Molecular Weight:

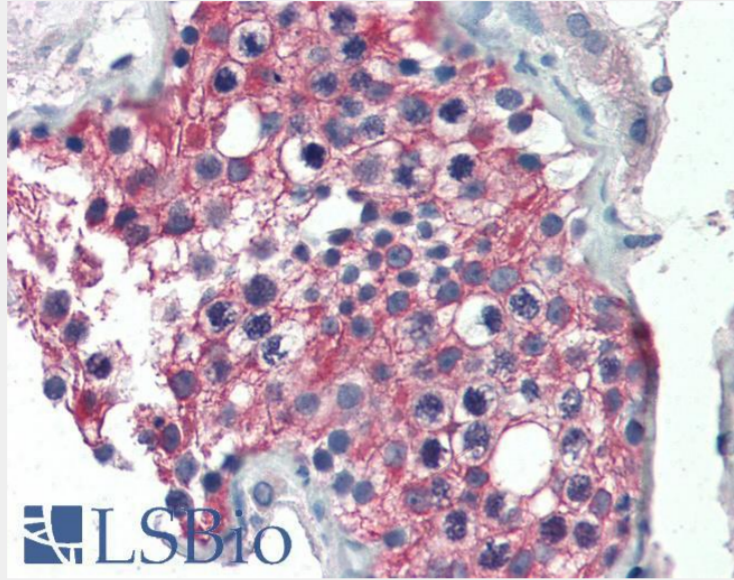
54.9

Sequence:

C-RELGEYGFHEYTE

Product Description

The peptide was used in the production of Product # tcva07138 Goat Anti-ALDH1A1 (Internal) Antibody .It is currently untested in blocking applications.



EB07138 (5µg/ml) staining of paraffin embedded Human Testis. Steamed antigen retrieval with citrate buffer pH 6, AP-staining.



EB07138 (1µg/ml) staining of Human Liver Lysate (35µg protein in RIPA buffer). Primary incubation was 1 hour. Detected by chemiluminescence.

All products are for RESEARCH USE ONLY. Not for diagnostic & therapeutic purposes!