

# SH2D1A / SLAM associated protein Immunizing Peptide

## Catalog No: tcva07013p



### Available Sizes

**Size:** 100µg



### Specifications

**Application:**

For Blocking studies, reconstitute pellet in 200µl distilled water to obtain a 0.5mg/ml peptide solution.

**Form:**

Lyophilised peptide

**Concentration:**

5pmol/µL ; Formulation 5pmol/µL in 5% (v/v) acetonitrile/H<sub>2</sub>O.

**Purity / Grade:**

>95%

**Storage Instruction:**

Shipped at ambient temperature, store at -20°C.

**Alternative Names:**

SH2D1A; SH2 domain protein 1A, Duncan's disease (lymphoproliferative syndrome); HGNC:10820; DSHP; EBVS; IMD5; LYP; MTCPI; SAP; XLP; XLPD; SH2 domain protein 1A; SLAM (signaling lymphocyte activation molecule) associated protein; T cell signal transduction molecule SAP; FLJ18687; RP5-1052M9.3; FLJ92177; Duncan's disease; SLAM-associated protein; T cell signal transduction molecule SAP; signaling lymphocyte activation molecule-associated protein

**Predicted Molecular Weight:**

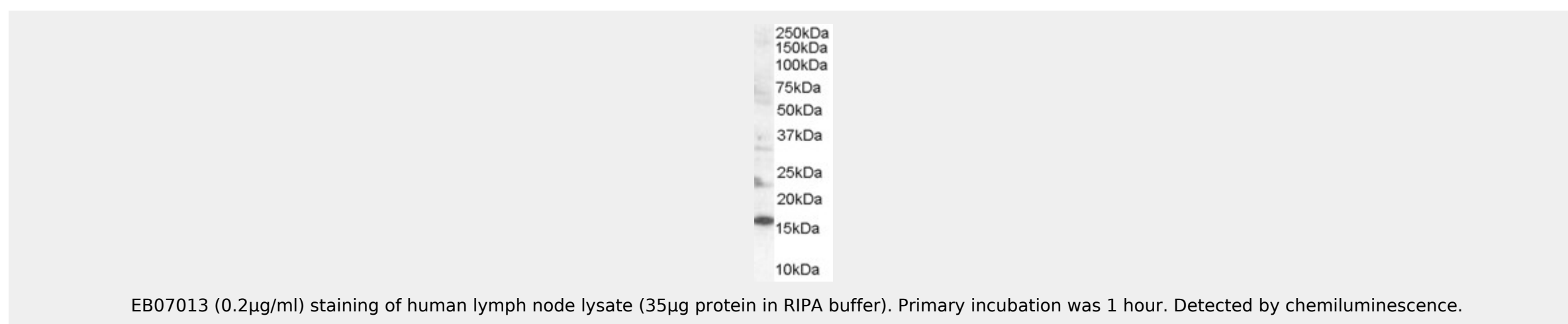
14.2; 13.9

**Sequence:**

C-QYPVEKKSSARSTQ

### Product Description

The peptide was used in the production of Product # tcva07013 Goat Anti-SH2D1A/SLAM associated protein Antibody .It is currently untested in blocking applications.



All products are for RESEARCH USE ONLY. Not for diagnostic & therapeutic purposes!