

Polyclonal Antibody to Extracellular Matrix Metalloproteinase Inducer (EMMPRIN)

Catalog No: tcua4746



Available Sizes

Size: 20ul

Size: 100ul

Size: 200ul



Specifications

Application:

WB; IHC; ICC; IP.

Species Reactivity:

Homo sapiens (Human)

Host Species:

Rabbit

Immunogen / Amino acids:

Recombinant Extracellular Matrix Metalloproteinase Inducer (EMMPRIN)

Conjugation:

Unconjugated

Clonality:

Polyclonal

Form:

Liquid

Storage Buffer:

0.01M PBS, pH7.4, containing 0.05% Proclin-300, 50% glycerol.

Recommended Dilution:

Western blotting: 0.5-2ug/ml

Immunocytochemistry in formalin fixed cells: 5-20ug/ml

Immunohistochemistry in formalin fixed frozen section: 5-20ug/ml

Immunohistochemistry in paraffin section: 5-20ug/ml

Enzyme-linked

Alternative Names:

CD147; BSG; 5F7; M6; OK; TCSF; Basigin(Ok Blood Group); Collagenase stimulatory factor; OK blood group antigen;

Tumor cell-derived collagenase stimulatory factor

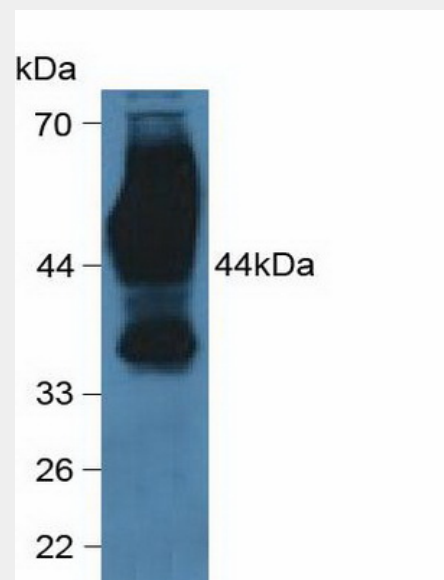


Figure. Western Blot; Sample: Human HeLa Cells.)

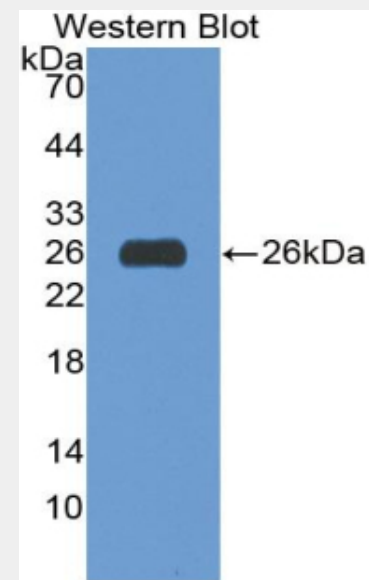


Figure. Western Blot; Sample: Recombinant EMMPRIN, Human.)

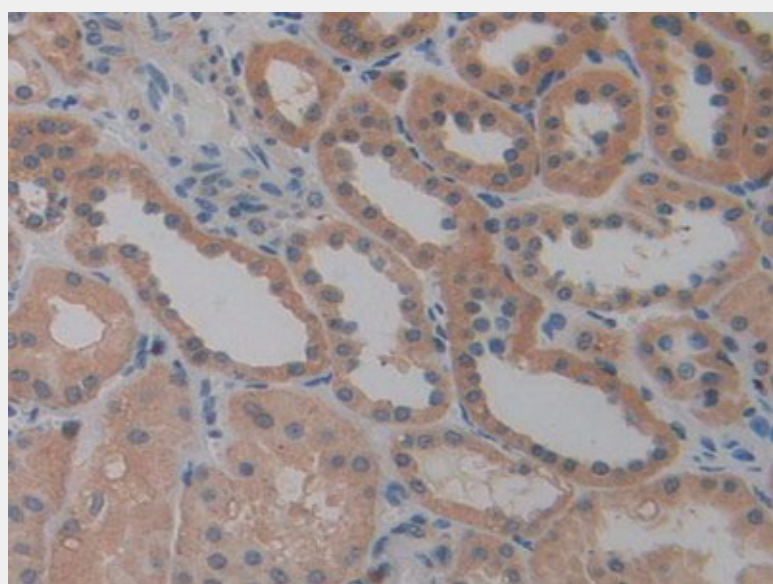


Figure. DAB staining on IHC-P; Samples: Human Kidney Tissue.)

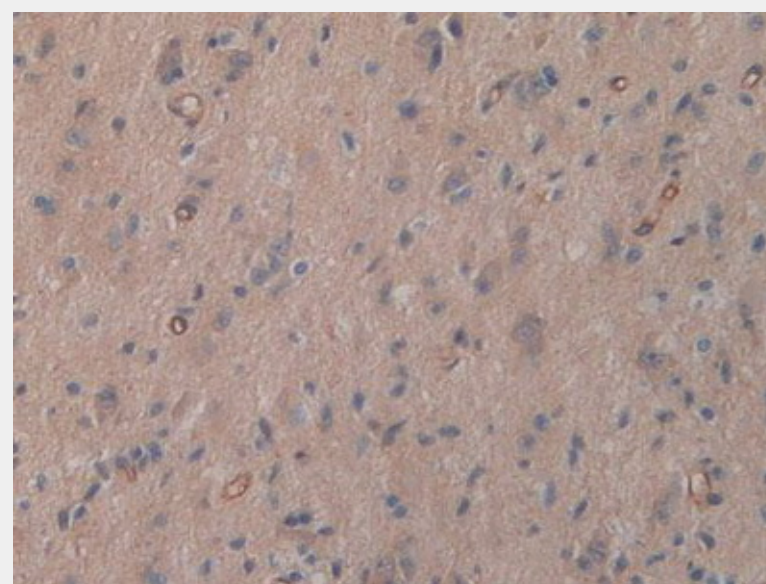


Figure. DAB staining on IHC-P; Samples: Human Glioma Tissue.)

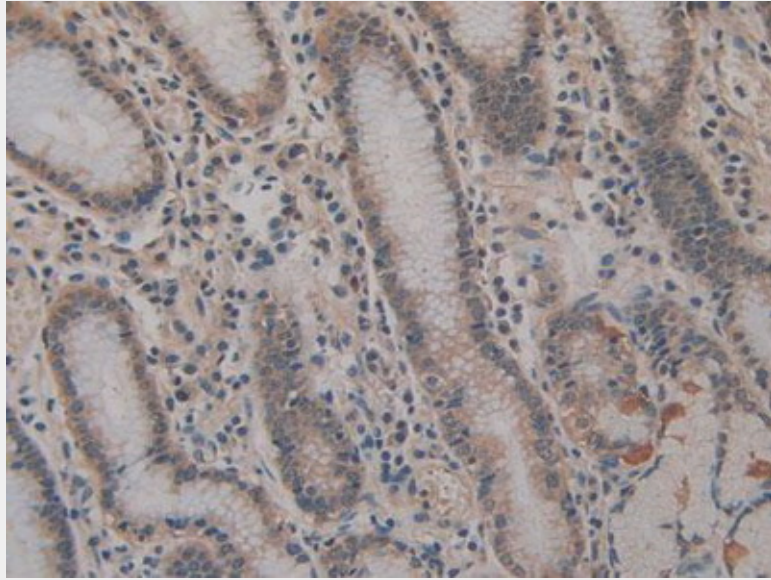


Figure. DAB staining on IHC-P; Samples: Human Stomach Tissue.)

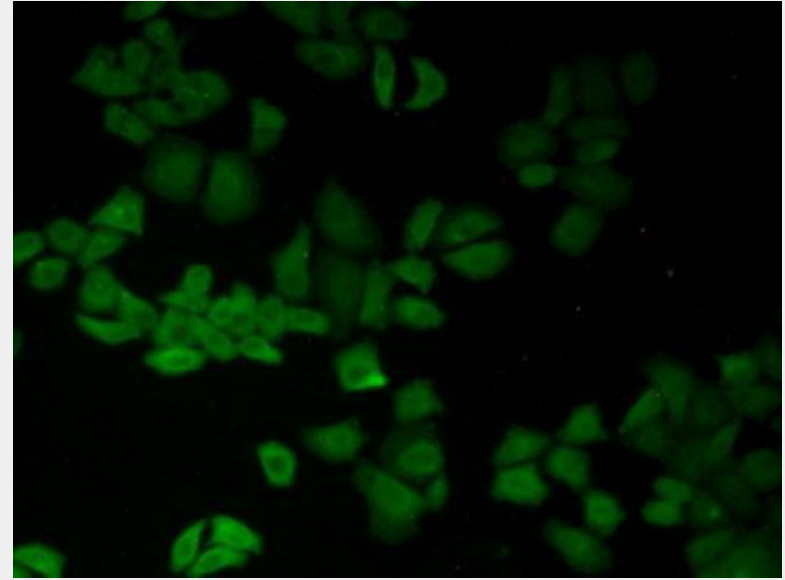


Figure. FITC staining on IHC-P; Samples: Human Hela Cells.)

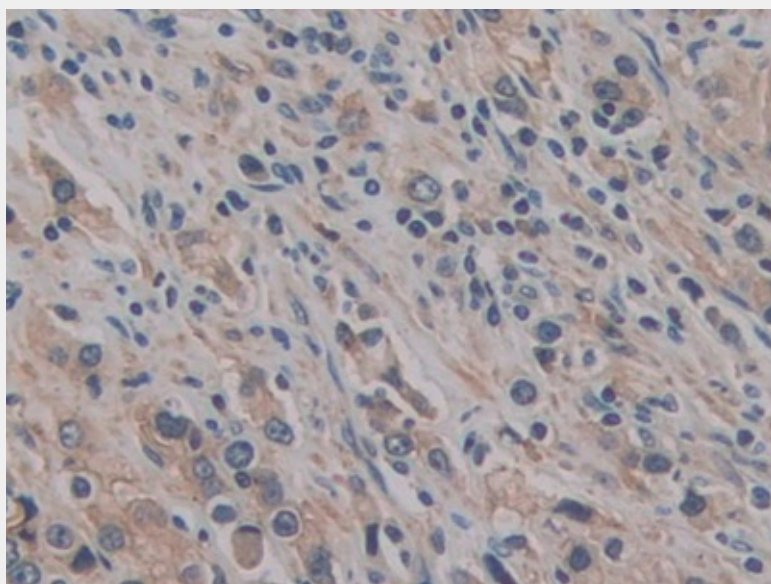


Figure. DAB staining on IHC-P; Samples: Human Prostate Gland Cancer Tissue.)

All products are for RESEARCH USE ONLY. Not for diagnostic & therapeutic purposes!