

Polyclonal Antibody to Peptidylprolyl Isomerase F (PPIF)

Catalog No: tcua4732



Available Sizes

Size: 20ul

Size: 100ul

Size: 200ul



Specifications

Application:

WB; IHC; ICC; IP.

Species Reactivity:

Mus musculus (Mouse)

Host Species:

Rabbit

Immunogen / Amino acids:

Recombinant Peptidylprolyl Isomerase F (PPIF)

Conjugation:

Unconjugated

Clonality:

Polyclonal

Form:

Liquid

Storage Buffer:

0.01M PBS, pH7.4, containing 0.05% Proclin-300, 50% glycerol.

Recommended Dilution:

Western blotting: 0.5-2 μ g/mL

Immunohistochemistry: 5-20 μ g/mL

Immunocytochemistry: 5-20 μ g/mL

Optimal working dilutions must be determined by end user.

Alternative Names:

PPI-F; CYP3; Cyp-D; CyP-M; Peptidyl-Prolyl Cis-Trans Isomerase, Mitochondrial; Cyclophilin F; Mitochondrial cyclophilin; Rotamase F

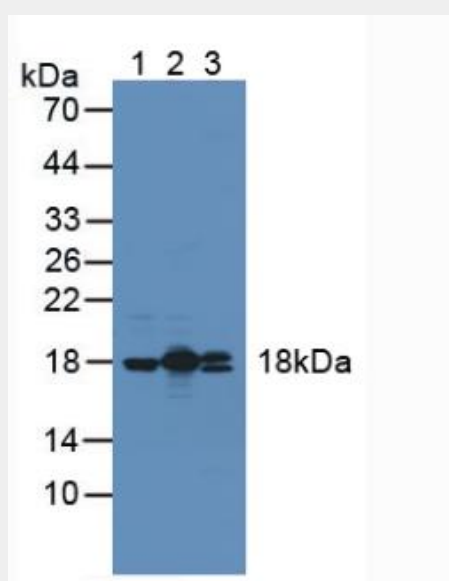


Figure. Western Blot; Sample: Lane1: Mouse Heart Tissue; Lane2: Rat Heart Tissue; Lane3: Human Hela Cells.)

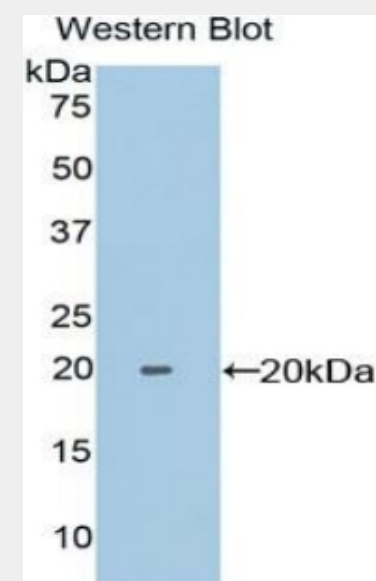


Figure. Western Blot; Sample: Recombinant PPIF, Mouse.)

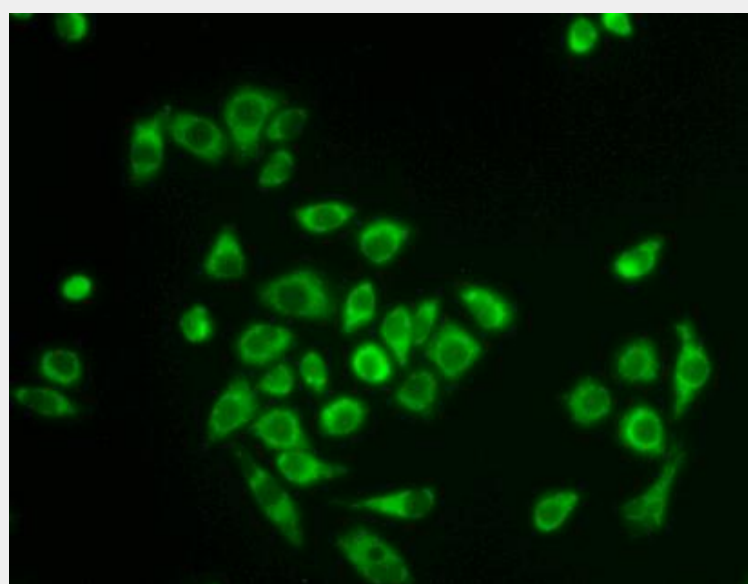


Figure: FITC staining on IHC-P
Sample: Hela cells)

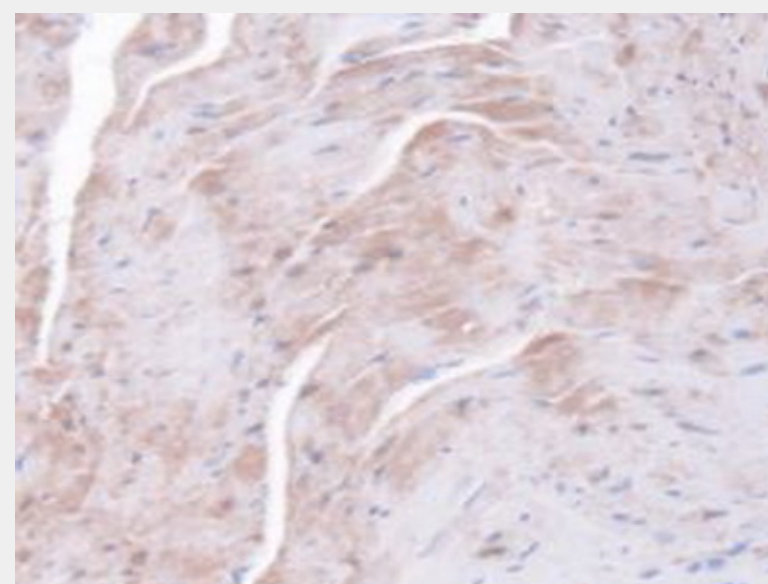


Figure. DAB staining on IHC-P;
Samples: Mouse Heart Tissue.)

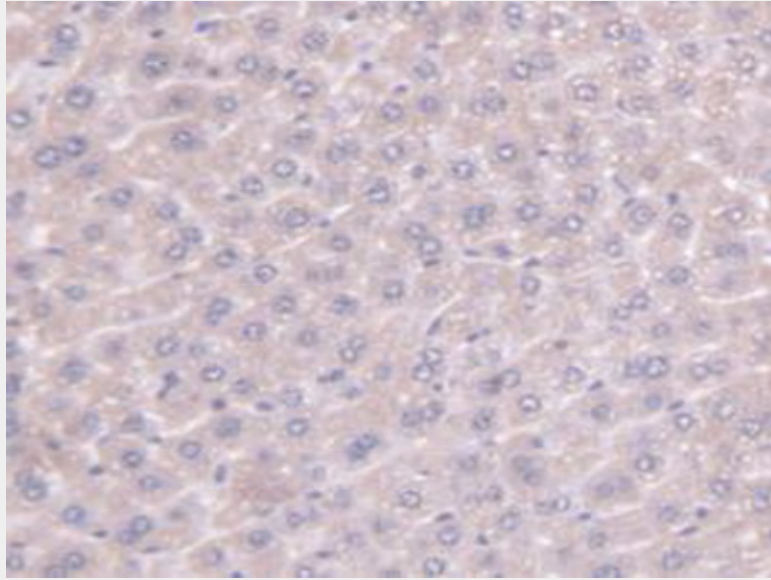


Figure. DAB staining on IHC-P;
Samples: Mouse Liver Tissue.)

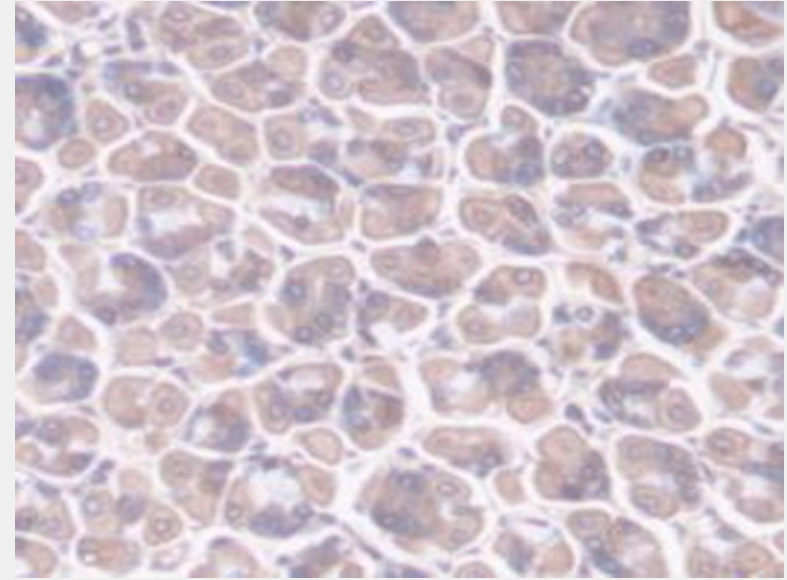


Figure. DAB staining on IHC-P;
Samples: Mouse Stomach Tissue.)

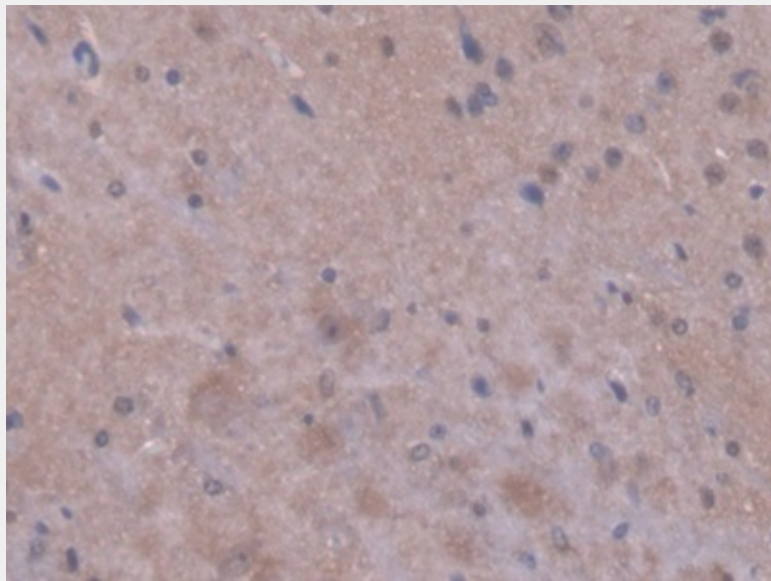


Figure. DAB staining on IHC-P; Samples: Mouse Brain Tissue.)

All products are for RESEARCH USE ONLY. Not for diagnostic & therapeutic purposes!